

## 2. DIRECTIONS FOR USE

### Recommendation for First Use:

Since battery may not be fully charged when pump is first received, it is recommended that battery be charged for 6 hours prior to operating on battery power (see Page 18 for additional information).

### Priming and Loading the Disposable Set

#### Step 1:

**If you are using the spike set with a vented bottle or pre-filled bag:**

Remove protective cover from spike, and insert spike into spike adapter of formula container (Figure 2-1).

**If you are using the 500ml or 1200ml disposable set:**

Hold bag upright and pour in feeding solution (Figure 2-2). Close cap securely.

NOTE: Blenderized or aggressively mixed solutions may have foam. If using this type of solution, allow it to sit for 10 to 15 minutes before pouring into bag. This will reduce the chance of an alarm due to air in the tubing.

#### Step 2:

Remove protective cover from barbed adapter. If using pole clamp, protective cover may be held in the groove on back of clamp (Figure 2-3).

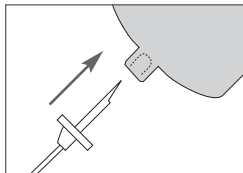


Figure 2-1 Spike Container

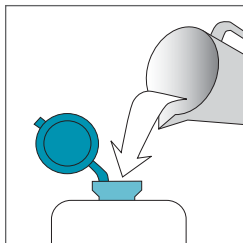


Figure 2-2 Fill Bag

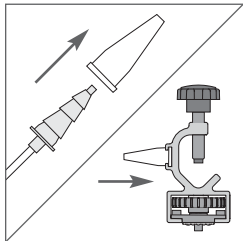



Figure 2-3 Remove Cover from Barbed Adapter / Place Cover on Pole Clamp



NOTE: If set is to be used with a carry pack, all air must be removed from bag and tubing. **Continue to step 3 for instructions on removing air.** If set is to be hung above pump, i.e. on an IV pole, **you may skip to step 4.**

### Step 3:

Turn bag upside down and gently squeeze. Tilt bag as needed to keep air at tubing port (Figure 2-4).

### Step 4:

Gently pinch teal colored tubing **below** “” symbol. Hold this position until air is removed from tubing. Gently squeeze bag at same time to assist fluid flow. If fluid does not flow, pinch may be too tight (Figure 2-5).

NOTE: Inside the teal colored tubing, below the “” symbol is the in-line occluder. By pinching tubing gently, the tubing moves away from the in-line occluder allowing fluid to flow (Figure 2-6). It is important to only pinch the tubing below the “” symbol to avoid damaging the in-line occluder.

NOTE: Air may also be removed from tubing using the pump prime feature. See step 7 for instructions on using the pump prime feature.

### Step 5:

Loop silicone tubing around pump wheel stretching lightly. Seat cassette into pump (Figure 2-7). **Close pump door** (Figure 2-8).

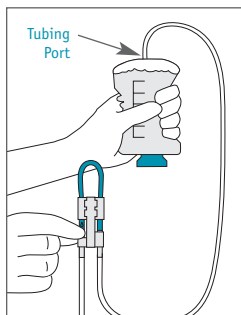


Figure 2-4 Squeeze Bag

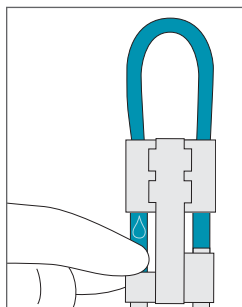


Figure 2-5 Pinch Tubing

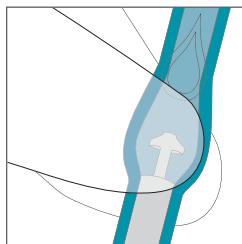


Figure 2-6 Tubing Segment Being Pinched