

---

# zip'r mobility

## PC operations manual



**Zip'r™ Mobility LLC**  
**North Bend, WA**  
**(800) 760-9107**  
**[www.zipr.com](http://www.zipr.com)**

**“Simplicity in Mobility”**

# SAFETY WORDS

**Safety words are used throughout this manual to indicate hazards and/or unsafe actions. Please refer to the table below for definitions of the safety words.**

SAFETY WORD	DEFINITION
<b>CAUTION</b>	Caution indicates a potentially hazardous situation which, if not avoided, could result in product damage or malfunction
<b>DANGER</b>	Danger indicates a probably hazardous situation which, if not avoided, will result in personal injury, product damage, or malfunction.
<b>PROHIBITED</b>	Prohibited indicates that such actions should not be performed at any time. Performing a prohibited action can cause personal injury, product damage, or malfunction.
<b>REQUIRED</b>	Required indicates that these actions should be performed as specified. Failure to perform required actions can cause personal injury, product damage, or malfunction.
<b>WARNING</b>	Warning indicates a potentially hazardous situation which, if not avoided, could result in personal injury, product damage, or malfunction.

## **IMPORTANT NOTES**

- Please note that the information contained in this document is subject to change without notice. Please see [www.zipr.com](http://www.zipr.com) for updated copies of this manual.
- Failure to follow the instructions, warnings, and notes in this manual and those located on your Zip'r PC can result in personal injury, product damage, or malfunction and void Zip'r product warranty.
- It is assumed that an authorized Zip'r dealer has properly fit the product to the user and has instructed the user on proper use/operation. If you purchased this product over the internet or from a previous owner and you have questions about the safe use and/or proper maintenance the please refer to our website [www.zipr.com](http://www.zipr.com) or contact Zip'r directly at (800)760-9107.

---

# TABLE OF CONTENTS

**PRODUCT SPECIFICATIONS..... Pg. 4**

**SAFETY..... Pg. 5**

**EMI/RFI WARNING..... Pg. 10**

**YOUR ZIP'R PC..... Pg. 11**

**ASSEMBLY..... Pg. 12**

**BATTERIES AND CHARGING ..... Pg. 16**

**ZIP'R PC OPERATIONS ..... Pg. 20**

**TROUBLESHOOTING GUIDE..... Pg. 24**

**PRODUCT CARE & MAINTENANCE..... Pg. 25**

**WARRANTY..... Pg. 27**

## **ZIP'R MOBILITY CONTACT INFORMATION**

**(800)760-9107    [www.zipr.com](http://www.zipr.com)**

**MY AUTHORIZED DEALER:** \_\_\_\_\_

**DEALER TELEPHONE #:** \_\_\_\_\_

**PRODUCT SERIAL #:** \_\_\_\_\_

## PRODUCT SPECIFICATIONS

Specifications	Zip'r PC
Weight capacity	300 lbs.
Maximum speed*	4 mph
Per-charge range*	Up to 15 miles
Turning radius	20"
Ground clearance	3" (at mid-frame) 1" (at anti-tip wheels)
Overall length	40"
Overall width	24"
Overall height	36"-38"
Weight w/ batteries	160 lbs.
Weight: Base	77.7 lbs.
Weight: Seat	37.3 lbs.
Weight: Batteries	45 lbs.
Heaviest piece	77.7 lbs. (the base)
Battery	2 U1 (12 V x 35 Ah)
Charger	Off-board, 5A
Drive	Front-wheel
Motor specifications	320 W (.43 hp), 24 V
Controller	PGDT VSI, 50A
Brakes	Electromagnetic, regenerative
Seat type	Foldable, mid-back
Seat width	19.5"
Seat depth	19"
Seat back height	18.5"
Seat-to-floor height	18"-20"
Drive wheel	10" x 3.5" flat-free
Rear caster wheel	7.5" x 2" flat-free
Anti-tip wheel	6" x 1.3" flat-free
Body colors	Red/Blue
Maximum climbing incline	8°

All specifications are subject to change without notification.

\*Specification may vary due to user weight, speed, battery condition and terrain.

# SAFETY

## WARNING

Please read and understand these safety instructions and the entire manual before using your Zip'r PC.

### Important DOs

- **Always** turn the power off when the unit is not in use.
- **Always** make sure your seat is locked before operating the PC.
- **Always** remain seated while driving your PC.
- **Always** keep legs and arms within the confines of the PC.
- **Always** drive straight up and down inclines.
- **Always** shift your weight in the direction of the turn.
- **Always** be extra cautious when operating the PC on wet surfaces and steep inclines or ramps.
- **Always** drive slowly while turning.
- **Always** come to a complete stop before attempting to reverse.
- **Always** use a grounded power receptacle when charging. Use of a non-grounded receptacle could result in an electrical shock.
- **Always** remember chair capacity is limited to one person only. This product is not approved for towing or for weights in excess of the published maximum.
- **Always** be aware of mechanical pinch points when assembling and disassembling your PC.

### Important DO NOTs

- **Never** modify the PC in anyway or use it for a purpose other that intended.
- **Never** attempt to drive over curbs or obstacles. Doing so may cause your PC to turn over.
- **Never** leave the power button on when entering or exiting the PC.
- **Never** go up or down or traverse slopes greater than 7 degrees.
- **Never** stand on flip up footboard. Doing so may cause the PC to turn over.
- **Never** operate this product if your health or medications you are taking cause you to feel dizzy, affect your vision, or in anyway effect your ability to safely operate the scooter.
- **Never** reverse down a steep hill or incline.
- **Never** park on inclines or declines.
- **Never** stop on an incline. If you must stop on an incline, then always lean forward to shift the center of gravity and prevent the PC from tipping over backwards.
- **Never** attempt to turn on an incline or decline.
- **Never** turn off the power while the PC is moving. Doing so will cause the PC to come to an abrupt stop.
- **Never** operate your PC on streets or other areas with vehicular traffic.
- **Never** hose off your PC or leave it uncovered in heavy rain.
- **Never** charge batteries that may be frozen.

---

## **SAFETY CONTINUED**

### **REQUIRED**

The Zip'r PC Chair is an electro mechanical device designed to enhance individual mobility. Please note that the selection and purchasing decision related to the acquisition of the Zip'r PC is the responsibility of the Zip'r PC user, who is capable of making such a decision.

The Zip'r PC user should thoroughly read these safety and operation instructions prior to use. Some users will need to practice operating the Zip'r PC in the presence of a trained attendant. A trained attendant can be defined as a family member or care professional trained in assisting a Zip'r PC user in daily living activities. It is important to practice and master safe Zip'r PC operations until the user is comfortable in maneuvering around frequently encountered obstacles.

Individual PC users may develop skills to deal with daily living activities that differ from those described in this manual but warnings and cautions given in this manual **MUST** be followed. Operations techniques used in this manual are a starting point for the new wheelchair/PC user and should be used only as a "basic" guide.

### **WARNING**

#### **STABILITY**

**ALWAYS** maintain proper positioning in the Zip'r PC seat. When reaching, leaning, or transferring it is important to use the casters as a tool to maintain stability and balance. Practice reaching, leaning, and transferring in the presence of a qualified healthcare professional before actively using the Zip'r PC.

**NEVER** carry heavy objects on your lap while occupying the Zip'r PC seat. This product has been designed to accommodate one individual only. Your Zip'r PC is rated for one individual at a maximum weight of 300 lbs. This product has not been tested as a weight lifting device or support and should not be used as such.

**ALWAYS** proceed with extreme caution as you approach an incline or decline. In compliance with the Americans with Disabilities Act of 1990, all handicap public access ramps are required to have a maximum slope of 5 degrees (8.7%). Even though your Zip'r PC is capable of climbing slopes greater than those described in this manual, do not, under any circumstance exceed those guidelines.

---

## **SAFETY CONTINUED**

### **WARNING**

NEVER drive up an incline or down an incline at an angle and never drive down an incline backwards.

ALWAYS avoid sudden stops on inclines and declines.

NEVER drive down a decline at full speed. Adjust the Zip'r PC to the slowest speed available prior to attempting the decline.

ALWAYS reduce your speed when cornering.

NEVER corner sharply while maneuvering an incline or decline.

### **OBSTACLES AND THRESHOLDS**

NEVER attempt to climb or descend an obstacle that is higher than 1 inch and never climb or descend an obstacle at an angle other than square (straight).

ALWAYS approach obstacles slowly and ensure that such obstacles can be safely maneuvered upon. Proceed over such an obstacle straight and at a slow and steady speed to ensure that all wheels and casters clear the obstacle.

NEVER attempt to climb or descend an obstacle that is wet or unstable and never climb or descend an obstacle in reverse.

ALWAYS use an elevator when traveling between floors.

### **PROHIBITED**

NEVER attempt to move or drive a Zip'r PC or any powered mobility product between floors using a stairway or an escalator.

### **WARNING**

ALWAYS reduce your speed when driving on even terrain and/or soft surfaces.

ALWAYS avoid driving in tall grass and loosely packed gravel/sand.

---

## **SAFETY CONTINUED**

### **WARNING**

#### **TRANSFERS**

1. Position the Zip'r PC as close as possible along side the seat to which you are transferring with rear casters pointing away from it.
2. Position body as far back as possible in the Zip'r PC seat in order to prevent the Zip'r PC chair from tipping forward.
3. Turn off the power to the Zip'r PC and ensure that the Zip'r PC is not in freewheel mode.
4. Flip up or remove the armrest on the side of the Zip'r PC from which you are transferring.
5. Flip up the foot platform to keep your feet from getting caught.

ALWAYS avoid using armrests for weight bearing purposes. Such use may cause the Zip'r PC chair to tip.

#### **WEATHER**

ALWAYS avoid inclement weather conditions whenever possible. Thoroughly dry your Zip'r PC chair before storing, charging, or operating.

#### **TRANSPORTING**

ALWAYS use care when lifting portions of your Zip'r PC. Individual components are heavy and should be moved with caution.

ALWAYS use care when transporting your Zip'r PC as there are no standards approved for tie-down systems in a moving vehicle of any type to transport a person while seated in a Zip'r PC.

#### **DRUGS / ALCOHOL**

NEVER operate your Zip'r PC while under the influence of alcohol.

ALWAYS consult your physician prior to operating a Zip'r PC while taking prescribed or over-the-counter medication.



---

# SAFETY CONTINUED

## SAFETY INSPECTION

### WARNING

#### Initial Inspection

- Ensure seat release latch is functional.
- Ensure seat is secured to the Zip'r PC frame.
- Ensure all wheel and caster mounting nuts are secure.
- Ensure that the Zip'r PC chair rolls straight (no excessive pull to one side).
- Ensure that adjustable arms operate and lock securely.
- Ensure casters have proper tension when spun. Casters should come to a gradual stop.
- Ensure casters are free of debris.
- Ensure that all electrical components are free of corrosion. Replace if corroded or damaged.
- Ensure all labels are present and legible. Replace if necessary.
- Ensure all tires are free of cracks and wear. Replace if necessary.

#### Weekly Inspection

- Ensure seat is secured to chair frame.
- Ensure that casters are free of debris.
- Ensure all tires are free of cracks and wear. Replace if necessary.

#### Monthly Inspection

- Ensure all wheel and caster mounting nuts are secure.
- Ensure casters have proper tension when spun. Casters should come to a gradual stop.
- Ensure that any loose hardware on the chair is fastened appropriately.
- Ensure that all electrical components are free of corrosion. Replace if corroded or damaged.
- Ensure all labels are present and legible. Replace if necessary.
- Clean upholstery and armrests.
- Clean tires and casters.

#### Periodic Inspection

- Ensure that the Zip'r PC chair rolls straight (no excessive pull to one side).
- Ensure that arm pivot points are not worn and/or loose. Replace if necessary.
- Ensure armrest pads sit flush against arm frame.
- Ensure that seat upholstery has not ripped and does not sag. Replace if necessary.

---

## **EMI/RFI WARNING**

### **WARNING**

#### **RADIO WAVE SOURCES MAY AFFECT POWERED MOBILE VEHICLE CONTROL.**

Electromagnetic (EMI) or Radio Frequency Interference (RFI) refers to the effects that outside sources of such energy might have on the control systems of your mobility vehicle. The interference from these sources could cause the vehicle to release its brakes, move by itself, and/or cause damage to the mobility vehicle controller.

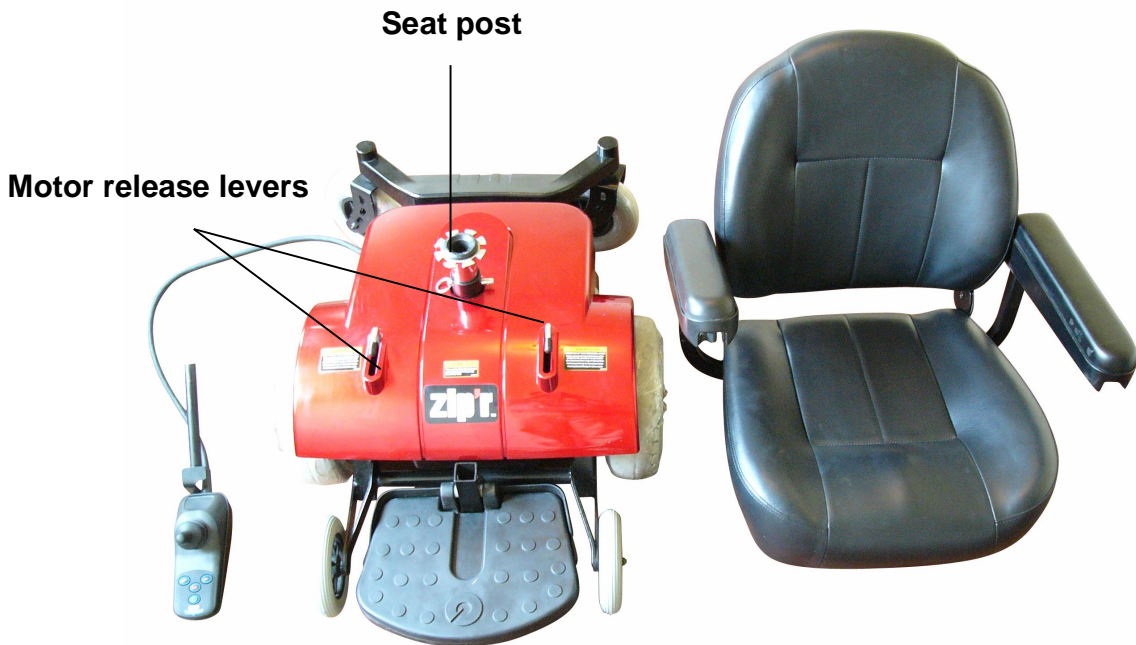
Sources of EMI and RFI include cellular phones, mobile two-way radios, radio stations, TV stations, amateur radio transmitters, wireless computer links, microwave signals, paging transmitters, and medium-range mobile transceivers used by emergency vehicles. This product has been tested and has an immunity (resistance) to EMI rated at 20V/m and the higher the immunity level the greater the protection against EMI.

#### **SAFETY PRECAUTIONS**

The following are some precautions you can take to reduce the risk of a mobility vehicle being affected by EMI/RFI.

1. Do not turn on or use hand held personal communication devices, such as citizens band radios (CB) and cellular phones while your vehicle is turned on.
2. Be aware of nearby transmitters, such as TV or radio stations and try to avoid coming close to them.
3. Be aware that adding accessories and/or components, or modifying your mobility vehicle in any way, may change its EMI/RFI resistance level, thus making it more susceptible to interference from radio wave sources.
4. Turn off your mobility vehicle by removing the key from the key switch when you are getting onto or off of your mobility vehicle and never leave the key in the key switch of an unattended mobility vehicle.
5. Report all incidents of unintended movement or unexpected brake releases to Zip'r Mobility.

# YOUR ZIP'R PC



# ASSEMBLY

## REQUIRED



Figure 1

## REQUIRED

Figure 1

The Zip'r PC is comprised of two main sections, the operating unit and the vinyl seat.



Figure 2

Figure 2

Adjust your seat post support height by pulling the metal pin, choosing the appropriate height, and reinserting the pin.



Figure 3

Figure 3

Twist the two motor release levers such that they are pointing outwards. This position engages the motor for operation. (Twist the levers forward to release the motor into freewheel position as needed)

## ASSEMBLY CONTINUED

### REQUIRED



Figure 4

### REQUIRED

Figure 4

Lift the seat onto the chrome seat post support by inserting the metal seat post (attached under the seat) into the chrome seat post support. Test seat by attempting to rotate – seat should not be able to rotate if installed correctly.



Figure 5

Figure 5

Install arm rests by loosening arm rest set knob located on the back of the seat frame and then inserting the arm rest into the seat frame. Tighten the arm rest set knob and ensure that the set knob is screwed fully through an arm rest position hole.



Figure 6

Figure 6

After installing the arm rests ensure that each arm rest is securely in place. After the arm rests are securely installed you can then locate and install the joystick controller – see figures 7, 8, and 9.

## ASSEMBLY CONTINUED

### REQUIRED



Figure 7

### REQUIRED

Figure 7

Loosen the set knob located underneath the arm rest and then insert the joystick frame into the front of the arm rest frame. Ensure that the joystick frame is fully inserted and then tighten the set knob such that the joystick can not be removed.



Figure 8

Figure 8

Align the joystick cable underneath the arm rest and feed the cable through the eye twist located on the arm rest.



Figure 9

Figure 9

After the cable is inserted, pinch and twist the eye twist together such that the cable remains attached to the arm rest frame. Excess cable can be pushed back into the hole on the PC plastic shroud.

## ASSEMBLY CONTINUED



Figure 10

### **REQUIRED**

Figure 10

In order to adjust the foot rest, loosen and remove the adjustment bolt and relocate the foot rest to the appropriate position. Reinsert the adjustment bolt and fully tighten. Rotate the foot rest up and down to ensure that it is securely installed.



Figure 11

Figure 11

Your Zip'r PC is now fully assembled and ready for operation. Please fully read the operations section of this manual prior to operating the Zip'r PC.

### **WARNING**

DO NOT OPERATE THIS ZIP'R PC WITHOUT FIRST FULLY READING AND UNDERSTANDING THE OPERATIONS AND SAFETY SECTIONS OF THIS OWNER MANUAL.

# BATTERIES AND CHARGING

## **WARNING**

ALWAYS ensure that the joystick On/Off switch is in the Off position prior to performing any maintenance, adjustment, or service.

ALWAYS have a qualified technician perform battery installations/removal – this is highly recommended by Zip'r Mobility.

ALWAYS wash hands after handling batteries. Battery posts, terminals, and related accessories contain lead and lead compounds.

NEVER allow any of your tools and/or battery cables to contact both battery terminal(s)/post(s) at the same time. An electrical short may occur and serious personal injury or damage may occur. Always wear rubber gloves when installing/removing batteries.

## **REMOVING/INSTALLING BATTERIES**

### **REQUIRED**



Step 1:  
Remove the joy stick controller from the seat arm and then remove vinyl seat and the chrome seat post from the Zip'r PC.

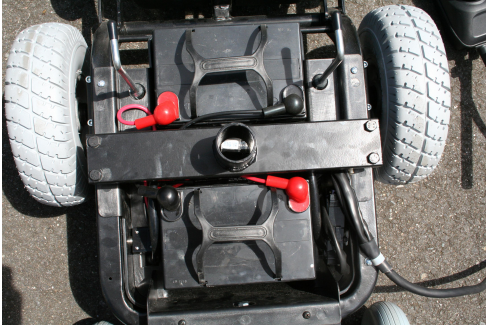


Step 2:  
Twist the two chrome release levers so that they are pointing forward.



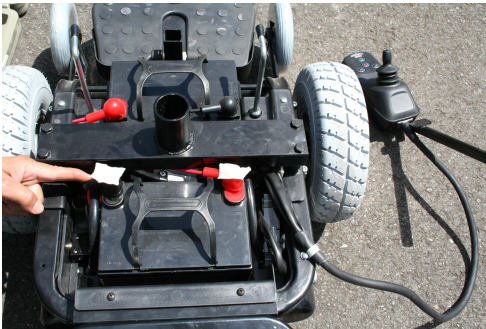
## BATTERIES AND CHARGING CONTINUED

### WARNING



### REQUIRED

Step 3:  
Remove the colored plastic shroud from the Zip'r PC frame (shroud is held in place with Velcro tape). After removing the shroud the Zip'r PC batteries and wiring will then be visible.



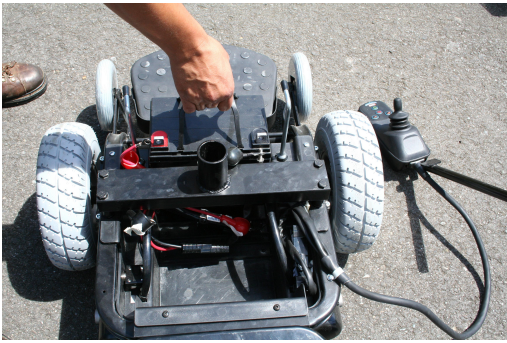
Step 4:  
Stand at the rear of the wheelchair and label each battery connection as follows with a piece of tape: rear (-) negative (black), rear (+) positive (red), front (+) positive (red), front (-) negative (black). This will assist in ensuring that the battery cables will be installed correctly when reinstalling the batteries.



Step 5:  
Loosen and remove each battery cable from the battery terminals (ensure that the labeled tape remains on the red and black battery terminal covers).

## BATTERIES AND CHARGING CONTINUED

### WARNING



### REQUIRED

Step 6:  
Using the battery handles, remove each battery from the Zip'r PC.

**Reinstall/replace batteries in the reverse order of these directions.**

### BATTERY INSTALLATION REQUIREMENTS

- Use only sealed U1 type batteries in your Zip'r PC.
- Ensure that the positive (+) red cable and the negative (-) black cable for the rear battery are installed only on the replacement rear battery. Ensure that the positive (+) red cable and the negative (-) black cable for the front battery are installed only on the replacement front battery.
- Always replace both front and rear batteries (never just replace one battery).

---

## **BATTERIES AND CHARGING CONTINUED**

### **WARNING**

#### **CHARGING BATTERIES**

NEVER attempt to recharge the batteries by attaching charging cables directly to the battery terminals.

NEVER attempt to recharge the batteries and operate the wheelchair at the same time.

NEVER attempt to recharge the batteries when the wheelchair has been exposed to any type of moisture.

NEVER attempt to recharge the batteries when the wheelchair is outside.

NEVER sit on the wheelchair while recharging the batteries.

ALWAYS charge new batteries before initial use or battery life will be reduced.

NEVER use a charger not approved or supplied by Zip'r Mobility.

1. Attach the battery charger connector to the charger port on the front of the joystick.
2. Plug the charger's AC power cord or extension into the grounded 110-volt wall outlet.
3. When charging is complete, turn the charger off.
4. Disconnect the output cable from the charger port.

# ZIP'R PC OPERATIONS

## VSI CONTROLLER

The electronic controller is what you use to operate your PC and monitor the battery charge level, electronic functions, and the PC electrical system. The electronic controller is mounted to one of the armrests and is connected to the motors and batteries inside the PC shroud.

The VSI Controller consists of the following:

1. battery condition meter
2. maximum speed indicator
3. on/off button
4. horn button
5. speed decrease button
6. speed increase button
7. joystick
8. off-board charger socket

See the next page for a detailed description of each button or meter.



---

## **ZIP'R PC OPERATIONS CONTINUED**

### **Battery Condition Meter**

This meter is a 10 line segment display that indicates that the controller is turned on and also gives the battery charge status, and the electrical system status.

See the following colored line segment indicators:

- RED, YELLOW, GREEN LIGHTS LIT: Batteries charged; VSI and electrical system OK.
- RED AND YELLOW LIGHTS LIT: Charge batteries if possible; VSI and electrical system OK.
- RED LIGHTS ONLY LIT OR SLOW FLASH: Charge batteries as soon as possible; VSI and electrical system OK.
- RAPID FLASH OF LIGHTS: Indicates a fault in the VSI or the electrical system. Refer to the VSI Error Codes in the trouble shooting guide.
- RIPPLE SIDE TO SIDE OF LIGHTS: The joystick was not in the neutral position when the controller was turned on. If you get this signal, turn off the controller, allow the joystick to return to the neutral position, then turn on the controller.

### **Maximum Speed Indicator**

This meter indicates the maximum speed that the controller is currently set.

#### **WARNING**

Unless faced with an emergency situation, do not use the on/off button to stop the chair. This will cause the Zip'r PC to stop abruptly. Always turn the power off when you are stationary to prevent unexpected movement.

### **On/Off Button**

The on/off button turns the VSI Controller on or off when pressed.

### **Horn Button**

The horn button activates the horn when pressed.

### **Speed Decrease & Speed Increase Buttons**

The speed buttons control the speed of the Zip'r PC. Press the speed increase button to increase the speed. Press the speed decrease button to decrease the speed. The speed setting is displayed on the maximum speed indicator.

#### **REQUIRED**

The first few times you use your Zip'r PC you should set the speed to the slowest setting until you become familiar with the Zip'r PC settings.

---

## ZIP'R PC OPERATIONS CONTINUED

### **WARNING**

If your Zip'r PC begins to move in an unexpected manner, immediately release the joystick. Unless the joystick is damaged, this action should stop your Zip'r PC.

### **Joystick**

The joystick controls the movement of your Zip'r PC. The joystick is in the neutral position (center) when not being used. The farther you push the joystick from the neutral position, the faster your Zip'r PC moves. Please see the following guide for maneuvering your Zip'r PC:

<b>MOVEMENT</b>	<b>ACTION</b>
FORWARD	Push joystick forward, toward the front of the PC
REVERSE	Pull joystick back, toward the rear of the PC
Turn RIGHT	Move joystick toward the right side of the PC
Turn LEFT	Move joystick toward the left side of the PC
STOP	Release the joystick and the PC will quickly slow down

### **WARNING**

Only authorized Zip'r chargers should be connected to the off-board charger socket. See an authorized Zip'r Provider for details.

### **Off-Board Charger Socket**

The off-board charger socket is located at the lower front section of the VSI Controller. The off-board charger current should not exceed 5 amps.

### **Other VSI Controller Functions**

#### **Sleep Mode**

The VSI controller is equipped with a sleep mode feature. Sleep mode shuts off the main power if the joystick is not moved in any direction for a preset period of time. The battery lights on the keypad indicate sleep mode by blinking once every five seconds. To restore power and continue, push the on/off button twice.

---

## **ZIP'R PC OPERATIONS CONTINUED**

### **Lock Mode**

The VSI has a feature that enables you to lock your PC to prevent unauthorized use.

#### Locking your PC VSI Controller

1. With the VSI switched on, press and hold the on/off button. After 1 second, the VSI should beep.
2. Release the on/off button.
3. Push the joystick to the full forward position until the VSI beeps.
4. Pull the joystick to the full rearward position until the VSI beeps.
5. Release the joystick. There will be a long beep.
6. The VSI is now locked.

#### Unlocking your PC VSI Controller

1. Press the on/off key and power on the VSI. The maximum speed indicator should move from side to side.
2. Push the joystick to the full forward position until the VSI beeps.
3. Pull the joystick to the full rearward position until the VSI beeps.
4. Release the joystick. There should be a long beep.
5. The VSI is now unlocked.

# TROUBLESHOOTING GUIDE

## VSI Error Codes

The VSI controller is equipped with a self diagnostics system that allows the user to identify possible malfunctions. The table below identifies the individual error codes (codes are displayed as a rapid flashing of lights). If you get one of these error codes, contact an authorized Zip'r Provider.

FLASHING LIGHTS	DIAGNOSTIC SYMPTOM AND SOLUTION
1	The batteries need charging or there is a bad connection to the batteries. Check the connections to the batteries. If the connections are good, try charging the batteries.
2	The left motor has a bad connection. Check the left motor connection.
3	The left motor has a short circuit to a battery connection. Contact an authorized Zip'r Provider.
4	The right motor has a bad connection. Check the right motor connection.
5	The right motor has a short circuit to a battery connection. Contact an authorized Zip'r Provider.
6	The Zip'r PC is being inhibited by the battery charger. Unplug the battery charger.
7	A joystick fault is indicated. Make sure that the joystick is in the neutral (center) position before turning on the controller.
8	A controller system fault is indicated. Contact an authorized Zip'r Provider.
9	The parking brakes have a bad connection. Check the parking brake and motor connections. Make sure the controller connections are secure.
10	An excessive voltage has been applied to the controller. This is usually caused by a poor battery connection. Check the battery connections.

## Thermal Rollback

The VSI controller is equipped with a thermal rollback circuit. In the event that the VSI controller becomes excessively hot (above 140 degrees F), motor current is reduced. This will reduce your Zip'r PC's "power," which could also reduce your Zip'r PC's speed. Once the VSI controller reaches 158 degrees F, the current output is reduced to zero and your Zip'r PC will stop. This allows all of the components to cool down. When the temperature returns to a safe level, your Zip'r PC will resume its normal operations.



---

## **CARE & MAINTENANCE**

### **REQUIRED**

The Zip'r PC is a motorized mobility device that requires routine maintenance checks. Preventive maintenance is very important and will help ensure that your PC gives you years of trouble-free operations. If you have any doubt as to your Zip'r PC's operation or maintenance please contact an authorized Zip'r Provider. Some maintenance checks may be performed by you and some may require an authorized Zip'r Provider.

### **WARNING**

Direct exposure to water or moisture can cause the Zip'r PC to malfunction. Water can cause components to corrode and the chair frame to rust.

#### **Should your Zip'rPC come in contact with water/moisture:**

1. Dry the Zip'r PC thoroughly.
2. Allow the Zip'r PC to sit in a warm, dry place overnight.
3. Test the joystick and brake operations prior to using the Zip'r PC.
4. Contact an authorized Zip'r Provider if a malfunction results.

### **WARNING**

Never use a rubber conditioner on the tread area of the tires; doing so may cause the tires to slip and your Zip'r PC to skid.

#### **Tires and Wheels**

- Use a rubber conditioner on the tires' sidewalls (NEVER ON THE TREAD) to help preserve them.
- All wheel bearings are prelubricated and sealed thus they require no subsequent lubrication.

#### **General Guidelines**

- Avoid extreme temperatures (above 122 degree F and below 20 degree F). In extremely cold temperatures batteries may freeze and in extremely warm temperatures electronic components may fail.
- Avoid knocking the Zip'r PC controller as doing so may damage the electronic functions and/or the joy stick control.
- Clean with a damp cloth. (NEVER CLEAN OFF YOUR ZIPR PC WITH A HOSE AS DOING SO MAY DAMAGE THE ELECTRICAL COMPONENTS)
- Keep the controller clean and avoid liquids from coming in contact with the controller.
- Apply a light coat of car wax to the shroud to maintain gloss appearance.

---

## **CARE & MAINTENANCE CONTINUED**

### **WARNING**

#### Initial Inspection

- Ensure seat release latch is functional.
- Ensure seat is secured to the Zip'r PC frame.
- Ensure all wheel and caster mounting nuts are secure.
- Ensure that the Zip'r PC chair rolls straight (no excessive pull to one side).
- Ensure that adjustable arms operate and lock securely.
- Ensure casters have proper tension when spun. Casters should come to a gradual stop.
- Ensure casters are free of debris.
- Ensure that all electrical components are free of corrosion. Replace if corroded or damaged.
- Ensure all labels are present and legible. Replace if necessary.
- Ensure all tires are free of cracks and wear. Replace if necessary.

#### Weekly Inspection

- Ensure seat is secured to chair frame.
- Ensure that casters are free of debris.
- Ensure all tires are free of cracks and wear. Replace if necessary.

#### Monthly Inspection

- Ensure all wheel and caster mounting nuts are secure.
- Ensure casters have proper tension when spun. Casters should come to a gradual stop.
- Ensure that any loose hardware on the chair is fastened appropriately.
- Ensure that all electrical components are free of corrosion. Replace if corroded or damaged.
- Ensure all labels are present and legible. Replace if necessary.
- Clean upholstery and armrests.
- Clean tires and casters.

#### Periodic Inspection

- Ensure that the Zip'r PC chair rolls straight (no excessive pull to one side).
- Ensure that arm pivot points are not worn and/or loose. Replace if necessary.
- Ensure armrest pads sit flush against arm frame.
- Ensure that seat upholstery has not ripped and does not sag. Replace if necessary.

It is advised that you take your Zip'r PC to an authorized Zip'r PC Provider for yearly maintenance.

---

## **WARRANTY**

This warranty is extended only to the original purchaser who purchases this product when new and unused from Zip'r Mobility LLC or an authorized Provider of Zip'r Mobility LLC. This warranty is not extended to any other person or entity and is not transferable or assignable to any subsequent purchaser or owner. Coverage under this warranty will end upon any such subsequent sale or other transfer of title to any other person.

Contact Zip'r Mobility LLC directly or any Zip'r Mobility authorized Provider for warranty service and/or questions.

This warranty covers the cost of replacement components. This warranty covers the cost of repair labor if the repairs are conducted at the Zip'r Mobility maintenance facility in North Bend, WA. This warranty does not cover the cost of shipping components and/or full products for repair or replacement – such costs are the responsibility of the purchaser.

### **FIVE-YEAR LIMITED WARRANTY**

For five (5) years from the date of purchase, Zip'r Mobility will repair or replace at our option to the original purchaser, free of charge, any of the following parts found upon examination by an authorized representative of Zip'r Mobility to be defective in material and/or workmanship.

#### **Structural frame components:**

- Main Frame
- Anti-tip & Caster Forks
- Seat Post & Seat Frame

### **ONE-YEAR LIMITED WARRANTY**

For one (1) year from the date of purchase, Zip'r Mobility will repair or replace at our option to the original purchaser, free of charge, any of the following parts found upon examination by an authorized representative of Zip'r Mobility to be defective in material and/or workmanship.

#### **Electronic components, including:**

- Charger
- Controller
- Electrical Harness

#### **Other components, including:**

- Electronic Brake Assembly (NOT BRAKE PADS)
- Bearings & Bushings
- Motor & Gearbox

---

## **WARRANTY CONTINUED**

### **SIX MONTH LIMITED WARRANTY**

- The batteries are covered by a six-month limited warranty.

### **WARRANTY EXCLUSIONS**

- ABS plastic shroud & all plastic components other than the controller unit and wire harness covers.
- Brake pads (wear items)
- Motor brushes
- Fuses
- Upholstery and seating
- Tires (wear items)
- Circumstances beyond the control of Zip'r Mobility LLC
- Labor, service calls, shipping, and other charges incurred for repair of the product, unless specifically authorized by Zip'r Mobility LLC

Do not return faulty parts to Zip'r Mobility LLC without prior written authorization from Zip'r Mobility LLC.

### **IMPLIED WARRANTIES**

Implied warranties, including those of merchantability and fitness for a particular purpose, are limited to one (1) year from the date of purchase and to the extent permitted by law. Any and all implied warranties are excluded. This is the exclusive remedy. Liabilities for consequential damages under any and all warranties are excluded.

Some states do not allow limitations on how long an implied warranty lasts or do not allow the exclusion of limitation incidental or consequential damages. The above limitation or exclusion may not apply to you.

This warranty gives you specific rights, and you may also have other rights which vary from state to state.

---

## **NOTES**