

## HOW TO ATTACH

The Osto-EZ-Vent® provides comfort and convenience  
(click on an image for a close-up view)

### Step 1



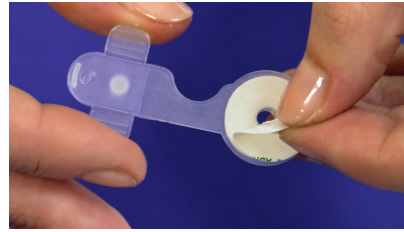
To begin: You will need pouch, the Osto-EZ-Vent®, 91% \* or higher Isopropyl Alcohol, (DO NOT use prepackaged alcohol pads.), cotton, and the instruction sheet.

### Step 2



On the side of the bag *opposite* the stoma opening, above the level of the opening, rub a small area with alcohol-moistened cotton until the gloss on the pouch surface is removed.

### Step 3



Peel backing from vent tape. *Do not touch sticky surface.*

### Step 4



Open vent. Place it horizontally on cleaned area of pouch. With thumbs and forefingers, press all around vent base for best contact to pouch. Vent should stick right away, however, let bond for 24hr.

### Step 5



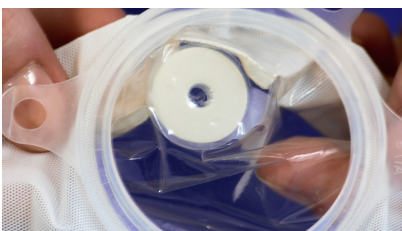
Once bonded, give the vent a slight tug test. If materials stretch as shown in photo you have a good bond.

### Step 6



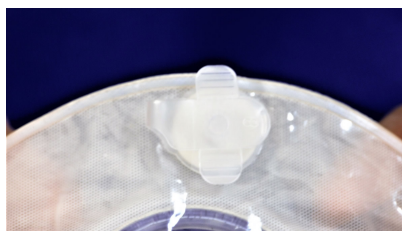
Once vent is securely bonded to bag surface, bring the vent down to the pouch opening as shown in photo, open vent and insert the narrow blade of a pair of scissors through the vent opening. Twist the blade back and forth making the hole the size of the vent opening.

### Step 7

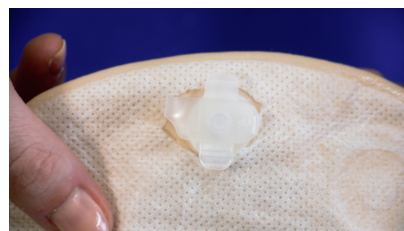


*Make the hole the same size as the vent opening* to allow air to escape easily.

### Step 8



Close vent, pouch with attached vent is ready to wear.



### For Covered Pouches Only

Carefully cut a small hole in the cover to attach your Osto-EZ-Vent® *directly* to the pouch.

\* Walgreen's and Walmart sell the 91% or higher Isopropyl Alcohol