



DAILY SUPPORT FOR AN ACTIVE LIFESTYLE

VertaLoc®

KNEE ORTHOSIS

Effective combination of stability, adjustability and customization

Our VertaLoc® knee braces are designed to comfortably maximize knee support, ease pain, as well as stabilize and control mild to moderate levels of medial lateral movement.

* * *

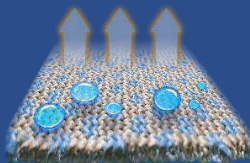
INDICATIONS FOR USE:

- Osteoarthritis
- Rheumatoid arthritis
- Mild to severe ligament instabilities
- Meniscal cartilage derangement
- Sprains and strains of knee
- Tear of medial meniscus
- Mild fractures



DynaLite Knee Brace

HYPOALLERGENIC



Durable, hypoallergenic, breathable and lightweight material offers increased airflow for comfortable daily wear and compression.

PDAC approved for HCPCS Code L1832 or L1833



Dynamic Knee Brace

This adjustable hinge knee orthosis permits physician or practitioner to set limits on flexion and extension, while enabling patients' free range of motion of their knees.

PDAC approved for HCPCS Code L1833



Progressive Knee Brace

ONE BRACE FITS ALL

VertaLoc® Progressive knee brace was designed to comfortably fit any size knee. It allows patients to measure and easily adjust the brace to the exact size they require. A measuring tape is included for added convenience.

PDAC approved for HCPCS Code L1832 or L1833



MAX OA Knee Brace



The VertaLoc® MAX OA knee orthosis features a fully adjustable range of motion hinge and rotation control. Available in left or right knee for proper fit and effective support.

PDAC approved for HCPCS Code L1852

Size	Circumference in Inches
Small	14 – 17
Medium	17 – 20
Large	20 – 23
X Large	23 – 26
2X Large	26 – 28
3X Large	28 – 31

*Sizes and Measurements for DynaLite and Dynamic knee braces
Both braces are designed to fit the left or right leg.

Sixteen metal stops and an Allen key are included with DynaLite, Dynamic and Progressive knee braces to adjust the range of motion on both hinges for maximum **control, adjustability** and **customization**.

For More Details Visit
www.vertaloc.com

Tel: 855-837-8256