

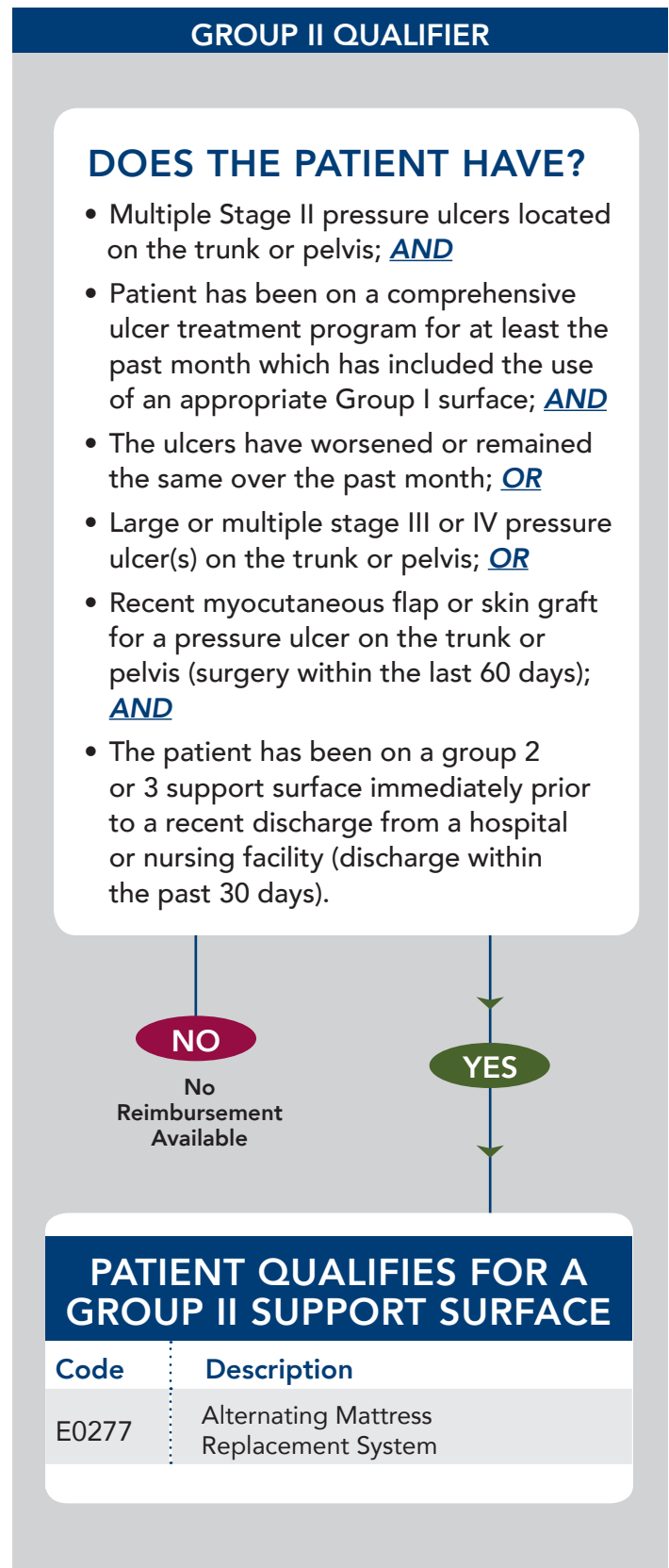
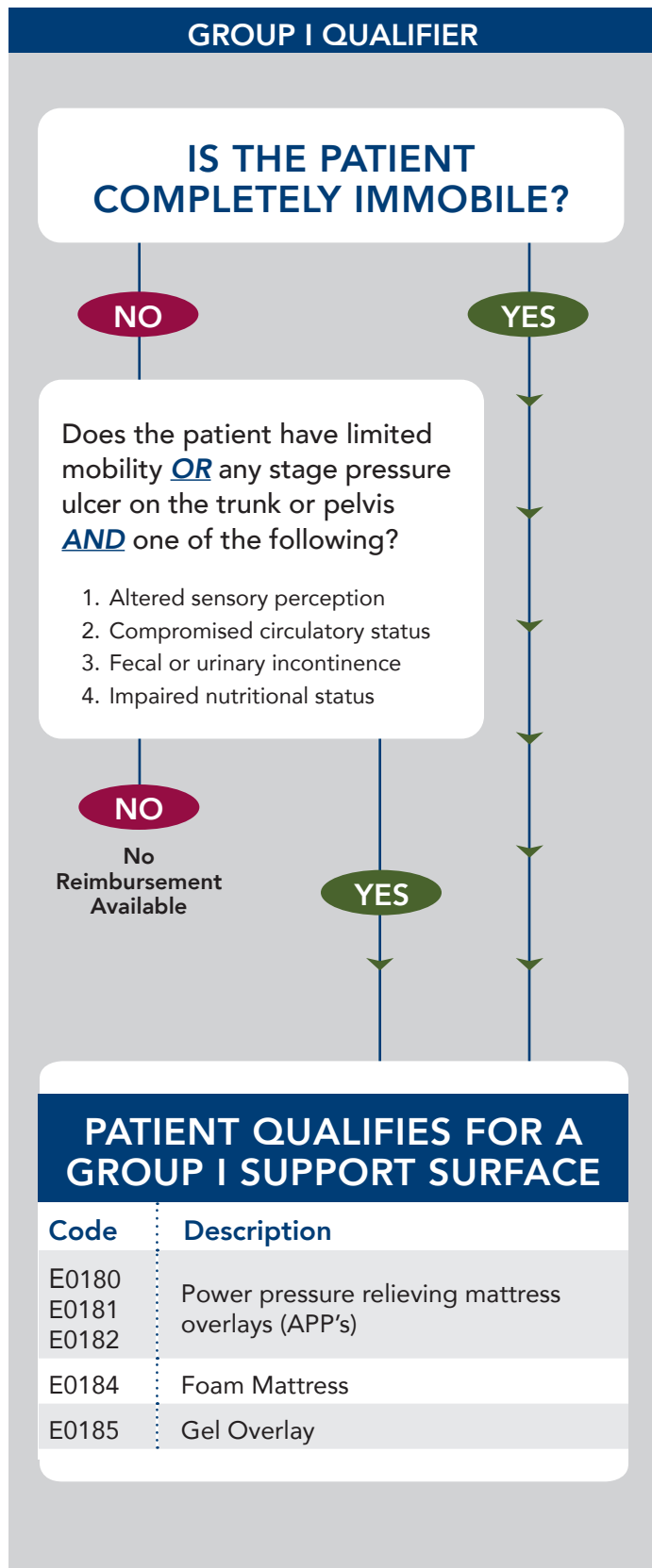
THERAPEUTIC SUPPORT SURFACES CATALOG



800.376.7263 | www.compasshealthbrands.com



GROUP I & II Support Surface Qualifiers CMS Coding Eligibility



Medicare Criteria: This information is not intended to be, nor should it be considered, billing or legal advice. Providers are responsible for determining the appropriate billing codes when submitting claims to the Medicare programs, and should consult an attorney or other advisor to discuss specific situations in further detail.

THERAPEUTIC SUPPORT SURFACES

Homecare Mattresses	4
Pressure Redistribution Foam Mattresses	5
Gel Overlays	6
Alternating Pressure Pump & Pad Systems	6
Alternating Pressure and Low Air Loss Mattress Systems	8
Perimeter Covers	14
Fall Prevention (Rail Pads & Floor Mats)	15
Wheelchair Cushions	16



WARNING

Whenever a support surface and bed rails are used as part of any hospital or home care bed system, the potential for bed rail entrapment exists. To reduce the risk, a patient must always be assessed regarding their risk of entrapment before any product is used. Routine patient monitoring is also required once a product is in use. To learn more about the risk of bed rail entrapment, contact your Roscoe Medical sales representative for a copy of our "Bed Rail Safety Guide" or visit the U.S. FDA's website at <http://www.fda.gov> and search for "Bed Rail Entrapment".

HCPCS
E0272



Fiber Core Homecare Mattress

- 100% virgin densified polyester fiber core is more economical than foam
- Lighter weight than innerspring mattress, reduces shipping costs
- Breathable polypropylene cover keeps patient cool and comfortable
- Mattress and vinyl cover are odor free and non-toxic
- Cover is waterproof, 100% recyclable, odor, stain, and mold resistant.
- Meets Federal Fire Code 16 CFR 1633
- One year warranty on fiber core and cover



Item #	Description	Size	Wt. Cap.	UOM
PBHBMATFB	Fiber Core Mattress with Polypropylene Cover	80" x 35" x 6"	300 lbs.	each
PBHBMATF84	Fiber Core Mattress with Polypropylene Cover	84" x 35" x 6"	300 lbs.	each

Firm Support Innerspring Mattress

- For use in home care, nursing homes and hospitals where firm support is needed
- High quality 312 bonnell coil provides resilient support base
- 2oz densified polyester fiber topper adds firmness and support
- Heavy-duty resinated pad with a specialized mesh woven back
- Equipped with two screened brass vents at the head of the mattress
- Five year warranty on spring
- One year warranty on manufacturer cover



Item #	Description	Size	Wt. Cap.	UOM
PBHBMATIS	Firm Support Innerspring Mattress	80" x 36" x 6"	300 lbs.	each
PBHBMAT84	Firm Support Innerspring Mattress	84" x 36" x 6"	300 lbs	each

HCPCS
E0271



Bariatric Foam Homecare Mattress

- High density foam core designed specifically for the home care environment
- Durable, long-lasting foam
- Waterproof nylon cover with anti-microbial and anti-fungal protection
- Lighter weight and lower shipping costs than innerspring mattresses
- Meets Federal Fire Code 16 CFR 1633
- HCPCS Code: E0184
- One year warranty on foam; 90 day warranty on vinyl cover



Item #	Description	Size	Wt. Cap.	UOM
PBHB42MAT	Bariatric High Density Foam Mattress	80" x 42" x 6"	700 lbs.	each
PBHB48MAT	Bariatric High Density Foam Mattress	80" x 48" x 6"	700 lbs	each

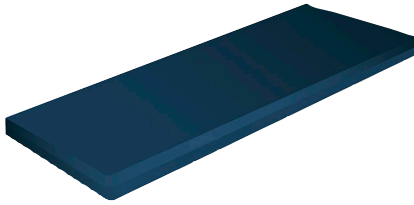
HCPCS
E0272



SATINFOAM3680 Mattress

GROUP 1

HCPCS
E0184



- Premium quality foam homecare mattress
- Waterproof, removable cover
- Non-slip underside keeps mattress firmly in place
- Fire retardant – meets 16 CFR 1633 requirements
- Super compressed packaging; box footprint is only 14" x 14" x 37"
- Product meets CFR 1633
- Limited 12-month warranty



*SHIPS COMPRESSED



Item #	Description	Size	Wt. Cap.	UOM
PBSATINFOAM3680	Core Comfort 300 Mattress	80" x 36" x 6"	300 lbs.	each

HCPCS
E0184



Aruba Single Layer Contour Foam Mattress

GROUP 1

- The sculptured foam surface is designed to provide pressure relief and comfort in three areas: the head and shoulders, the torso and the lower extremities
- The computerized fabrication cross-cut design maximizes airflow and provides comfort, support and pressure redistribution
- Deluxe nylon cover is durable, zippered, waterproof and anti-microbial. The cover reduces friction, heat and contamination. The bottom is reinforced vinyl with non-slip protection for safety
- Two year warranty on foam, one year on cover



Item #	Description	Size	Wt. Cap.	UOM
ARUBA-200	Aruba Foam Mattress	80" x 35" x 6"	350 lbs.	each
ARUBA-300	Aruba Foam Mattress	84" x 35" x 6"	350 lbs.	each



Gel-Lite Gel/Foam Overlay

GROUP 1

- 24 independent gel tubes prevent migration of gel in high pressure areas
- Raise beds top and bottom without gel migration
- Triple seal polyurethane gel tube construction ensures seal integrity
- High-density foam perimeter on all sides helps prevent patient roll-out
- Conforms to body contours and allows air circulation to reduce heat
- Convoluted foam topper provides additional comfort
- Cover is vapor permeable and moisture resistant; low shear/low friction
- Weight bearing capacity: 250 lbs
- Meets flammability standards 16CFR1632
- Meridian item #HDC-007Z is now GO-78373
- One year warranty
- TAA Compliant option available, ask your Compass Health Representative



Item #	Description	Size	Wt. Cap.	UOM
GO-78343-C	Gel-Lite Overlay (Replaces Meridian HDC-007Z)	78" x 34" x 3"	250 lbs.	each



Meridian SatinAir™ APP System

GROUP 1

- Interlocking bubble cells exchange air every 5 minutes
- Heavy duty 16 gauge PVC
- End flaps secure pad to mattress
- High capacity output 4.5 liters
- Variable pressure setting allows for maximum comfort
- Adjustable pressure range: 10 mmHg – 160 mmHg
- Cycle time: 5 minutes
- Illuminated on/off switch
- Built-in bed mount hooks
- HCPCS Codes: E0181 (pad and pump)
- HCPCS Codes: A4640 (replacement pad)
- Two year warranty on pump, 90 days on mattress pad



Item #	Description	Size	Wt. Cap.	UOM
MER-APP2	Meridian SatinAir APP System	78" x 34" x 2.5"	300 lbs.	each

A photograph of an elderly man with grey hair, smiling broadly while lying in a hospital bed. He is wearing a light blue patterned hospital gown. A woman with grey hair, wearing a bright pink shirt, stands beside him, also smiling. The background shows medical equipment and a hospital room setting.

CHOOSING THE RIGHT SURFACE

Pressure ulcers are high on the list of "never events" developed by the Center for Medicare and Medicare (CMS) stating that these events should never happen. We carry a broad line of systems with superior quality and exceptional value to meet your patients' individual needs.



GROUP 2

HPCPS
E0277



Genesis™ III/5

ALTERNATING PRESSURE/LOW-AIR LOSS MATTRESS SYSTEM

- Includes mattress, cover and pump
- Quiet high volume pump produces 7 LPM airflow
- Pump has LED indicators to identify normal/low pressure levels
- Mattress has 17 air bladders, 9 with laser holes for air loss function to increase patient comfort
- Pressure Range: 30 mmHg – 80 mmHg
- Cycle Time: 10 minutes
- Three pillow top head increases patient comfort and head support
- Spring lined air tubes prevent kinks and disruption of air pressure
- Mattress comes with standard nylon top cover
- CPR strap quickly releases air from the mattress
- One year warranty on mattress, 18 months on pump



Item #	Description	Size	Wt. Cap.	UOM
APM-5000-GBN	Genesis with 5" Low Air Loss Mattress	80" x 36" x 5"	350 lbs.	each



GROUP 2

HPCPS
E0277



Ultra-Care™ Excel/5

5-INCH ALTERNATING PRESSURE/LOW-AIR LOSS MATTRESS SYSTEM

- Includes mattress, cover and pump
- 5" alternating pressure mattress with low air loss
- CPR quick deflate located at the head of the mattress
- Cover is quilted, waterproof, vapor permeable nylon; low shear/low friction
- Air cells made with nylon/polyurethane for increased durability and reliability
- CPR quick deflate located at the head of the mattress
- Pump is an 8 liter-per-minute pump in an easy-to-use design
- 10 minute cycle time
- Two modes of therapy - static or alternating
- Variable pressure setting allows for maximum comfort
- Adjustable pressure range: 20 mmHg – 70 mmHg
- Two year warranty on mattress and pump



Item #	Description	Size	Wt. Cap.	UOM
5010	Ultra-Care Excel 5	80" x 36" x 5"	300 lbs.	each

HPCPS
E0277



Meridian SatinAir™ 8" APM

GROUP 2

ALTERNATING PRESSURE AND LOW AIR LOSS MATTRESS SYSTEM

- Includes mattress, cover and pump
- Pillow function maintains the air in cells at the head for patient comfort
- Air cells can be easily removed and replaced
- CPR quick deflate at head of mattress
- Quilted nylon zipper cover is low shear, fluid-resistant, and vapor permeable
- 8 liter-per-minute pump in an easy-to-use design
- Two modes of therapy - static or alternating
- Variable pressure setting for maximum comfort
- Support patients up to 350 lbs.
- One year warranty on mattress and pump



Item #	Description	Size	Wt. Cap.	UOM
MER-SAPM2	Meridian SatinAir™ 8" APM	80" x 36" x 8"	350 lbs.	each

HPCPS
E0277



Meridian SatinAir + Foam Base

GROUP 2

ALTERNATING PRESSURE AND LOW AIR LOSS MATTRESS SYSTEM WITH 3" FOAM BASE

- Includes mattress, cover and pump
- 3-inch foam base prevents "bottoming out" in the event of a power outage
- Pillow function maintains the air in cells at the head for patient comfort
- Air cells can be easily removed and replaced
- CPR quick deflate at head of mattress
- Quilted nylon zipper cover is low shear, fluid-resistant, and vapor permeable
- 8 liter-per-minute pump in an easy-to-use design
- Two modes of therapy - static or alternating
- Variable pressure setting for maximum comfort
- Pump features both audio and visual alarms
- Support patients up to 350 lbs.
- One year warranty on mattress and pump



Item #	Description	Size	Wt. Cap.	UOM
MER-SAPM53	SatinAir™ 5" Mattress + 3" Foam Base	80" x 36" x 8"	350 lbs.	each



GROUP 2

HCPSC
E0277



ULTRACARE



Ultra-Care™ 5800

BASIC ALTERNATING PRESSURE/LOW-AIR LOSS MATTRESS SYSTEM

- Includes mattress, cover and pump
- Pillow function maintains the air cells at the head for patient comfort
- Ventilated cell construction for low air loss
- CPR quick deflate at head of mattress
- Air cells made with nylon/PVC
- Quilted cover is water-resistant, vapor-permeable nylon; low shear/low friction
- 8 LPM pump in an easy to use design
- 10 minute cycle times
- Two modes of therapy - static and alternating
- Variable pressure setting allows for maximum comfort
- Support patients up to 350 lbs.
- One-year warranty on mattress, two-year warranty on pump



Item #	Description	Size	Wt. Cap.	UOM
MER-5800	8" Mattress with 8 LPM Pump	80" x 36" x 8"	350 lbs.	each
5802	8" Mattress Only	80" x 36" x 8"	350 lbs.	each



GROUP 2

HCPSC
E0277



ULTRACARE



Ultra-Care™ 4800

STANDARD ALTERNATING PRESSURE/LOW AIR LOSS MATTRESS SYSTEM

- Includes mattress, cover and pump
- 8" alternating pressure mattress with low air loss
- Quick disconnect cells for easy cell replacement
- Air cells made with nylon/polyurethane for increased durability and reliability
- CPR quick deflate located at the head of the mattress
- Quilted cover, moisture resistant, vapor permeable nylon; low shear/low friction
- Pump is an 8 liter-per-minute pump in an easy-to-use design
- 10 minute cycle time
- Two modes of therapy - static or alternating
- Front panel switch provides two modes of therapy - static or alternating
- Variable pressure setting allows for maximum comfort
- Adjustable pressure range: 20 mmHg – 70 mmHg
- Supports patients up to 350 lbs.
- Two year warranty on mattress and pump



Item #	Description	Size	Wt. Cap.	UOM
4800	Ultra-Care 4800 System	80" x 36" x 8"	350 lbs.	each
4800-84	Ultra-Care 4800 System with 84" Mattress	84" x 36" x 8"	350 lbs.	each
4800E	Ultra-Care 4800 System with 16 LPM Pump	80" x 36" x 8"	450 lbs.	each
4802 DC	Ultra-Care Mattress only	80" x 36" x 8"	350 lbs.	each



GROUP 2

HCPCS
E0277

Ultra-Care™ Excel

ALTERNATING PRESSURE/LOW-AIR LOSS MATTRESS SYSTEM WITH 3-INCH INTEGRATED FOAM BASE



ULTRACARE



- System includes mattress, cover and pump
- Features a 5" alternating pressure upper surface combined with an integrated 3" foam base to provide a full eight inches of therapeutic support with bottom-out protection in the event of a power failure
- Separate compartment for foam base inside polyurethane cover prevents soiling
- Quick disconnect cells for easy cell replacement
- Air cells made with nylon/polyurethane for increased durability and reliability
- CPR quick deflate located at the head of the mattress
- Quilted cover, moisture resistant, vapor permeable nylon; low shear/low friction
- Pump is an 8 liter-per-minute pump in an easy-to-use design
- 10 minute cycle time
- Front panel switch provides two modes of therapy - static or alternating
- Variable pressure setting allows for maximum comfort
- Adjustable pressure range: 20 mmHg – 70 mmHg
- Two year warranty on mattress and pump



Item #	Description	Size	Wt. Cap.	UOM
MER-4500	Ultra-Care Excel System	80" x 35.5" x 8"	325 lbs.	each
4500 E	Ultra-Care Excel System with 16 LPM Pump	80" x 35.5" x 8"	425 lbs.	each
4502	Ultra-Care Excel Mattress only	80" x 35.5" x 8"	325 lbs.	each



LOOKING FOR SOMETHING SPECIFIC?

Your Compass Health Representative is a knowledgeable, trained professional. If you can't find what you need, assistance is just a phone call away. Call **1-800-376-7263** or visit our online catalog at www.compasshealthbrands.com.

Group II | Alternating Pressure with Low Air Loss Mattress Systems

HCPCS
E0277



ULTRACARE



Ultra-Care™ II APM

LOW-AIR LOSS WITH CELL-ON-CELL MATTRESS DESIGN



GROUP 2

- Includes mattress, cover and pump
- 8" alternating pressure mattress with low air loss and cell-on-cell design
- Features Stay-Flate™ cell-on-cell air bladder construction to provide a full eight inches of therapeutic support with bottom-out protection in the event of a power failure (3" air base with 5" main cell)
- Air cells made with nylon/polyurethane for increased durability and reliability
- Quick disconnect cells for easy cell replacement
- CPR quick deflate located at the head of the mattress
- Quilted cover, moisture resistant, vapor permeable nylon; low shear/low friction
- Pump is an 8 liter-per-minute pump with 10 minute cycle time
- Two modes of therapy - static or alternating
- Front panel switch provides two modes of therapy - static or alternating
- Variable pressure setting allows for maximum comfort
- Adjustable pressure range: 20 mmHg – 70 mmHg
- Supports patients up to 350 lbs.
- Two year warranty on mattress and pump



Item #	Description	Size	Wt. Cap.	UOM
4250	Ultra-Care II APM System	80" x 36" x 8"	350 lbs.	each
4250E	Ultra Care II APM System	80" x 36" x 8"	450 lbs.	each

HCPCS
E0277



ULTRACARE

Ultra-Care™ Perimeter Plus

ALTERNATING PRESSURE/LOW-AIR LOSS MATTRESS SYSTEM
WITH 3-INCH INTEGRATED FOAM BASE AND 4-INCH FOAM PERIMETER



GROUP 2

- Includes mattress, cover and pump
- Twenty rows of 5" ventilated alternating pressure air cells
- 3-inch integrated foam base reduces the risk of bottoming out and provides additional safety in the event of power failure
- 4" wide by 8" high foam perimeter made with high-density foam provides firm support for egress or ingress from mattress or side edge seating
- Quick disconnect air cells made of nylon/polyurethane
- CPR quick deflate at head of mattress
- Quilted nylon zipper cover is low shear, fluid-resistant, and vapor permeable
- 16 liter-per-minute pump with two modes of therapy - static or alternating
- Five pressure setting for maximum comfort
- Support patients up to 450 lbs.
- Two year warranty on mattress and pump



Item #	Description	Size	Wt. Cap.	UOM
4580P	Ultra-Care Perimeter Plus System	80" x 36" x 8"	450 lbs.	each
4580P-42	Ultra-Care Perimeter Plus System, Bariatric	80" x 42" x 8"	600 lbs.	each

Group II | Alternating Pressure with Low Air Loss Mattress Systems



GROUP 2

HCPCS
E0277



ULTRACARE



Ultra-Care™ Xtra

BARIATRIC LOW-AIR LOSS WITH CELL-ON-CELL MATTRESS DESIGN

- Includes mattress, cover and pump
- A combination mattress system providing both alternating pressure and low air loss with a cell-on-cell mattress design for the for patients up to 800 lbs
- Cell-on-cell design prevents the patient from "bottoming out" in power outage
- Quick disconnect cells for easy cell replacement
- 10" air cells made with nylon/polyurethane for increased durability and reliability
- CPR quick deflate located at the head of the mattress
- Quilted cover, moisture resistant, vapor permeable nylon; low shear/low friction
- Pump is a high-flow 16 liter-per-minute pump in an easy-to-use design
- Dual compressor for increased patient comfort and weight capacity
- 10, 15 or 20 minute cycle times
- Two modes of therapy - static or alternating
- Five comfort settings for easy pressure adjustment
- Automatic reset from static to alternating after 45 minutes
- Adjustable pressure range: 20 mmHg – 50 mmHg
- Two year warranty on mattress and pump



Item #	Description	Size	Wt. Cap.	UOM
4840-42	Ultra Care Xtra Bariatric APM System	80" x 42" x 10"	800 lbs.	each
4840-48	Ultra Care Xtra Bariatric APM System	80" x 48" x 10"	900 lbs.	each
4840-54	Ultra Care Xtra Bariatric APM System	80" x 54" x 10"	900 lbs.	each



GROUP 2

HCPCS
E0277



Altus™ Pro

TRUE LOW-AIR LOSS MATTRESS SYSTEM

- Includes mattress, cover and pump
- Continuous pressure relief environment
- Helps reduce body temperature and moisture
- Snap cell design for easy replacement of individual cell
- 20 rows of 10" nylon/PU cells
- True Low Air Loss Blower produces over 1,000 LPM in air flow.
- 8 levels of pressure settings allowing
- Auto Firm Function quickly provides uniform firmness
- Seat Function increases pressure when patient is in the sitting position to prevent bottoming-out and for increased patient comfort
- Visible and audible alarms with Alarm Mute Function
- Emergency CPR Deflation through quick connector within 15 seconds
- Fluid-resistant four-way stretch polyester PU transfer cover with waterfall zipper for added protection
- Two year warranty on mattress and pump



Item #	Description	Size	Wt. Cap.	UOM
APM-TLAL	Altus Pro True Low Air Loss System (replaces 6000)	80" x 36" x 10"	425 lbs.	each
6000-42	Meridian True Low Air Loss System, Bariatric	80" x 42" x 10"	650 lbs.	each



Safe-T-Guard™ Cover

PERIMETER COVER TO REDUCE RISK OF FALLS AND ENTRAPMENT

- Reduces the risk of falls and entrapment
- Fits all standard-size hospital mattresses as well as standard eight inch alternating air mattresses
- Secures with three quick-release straps (positioned top, bottom and middle) that connect underneath the mattress
- The quilted top is water resistant and has a covered foam border that rises approximately four inches above the mattress surface and is sloped inward to reduce the risk of roll outs
- Includes cover and 4 foam inserts with separation to allow for patient egress
- Nylon, polyurethane construction to reduce heat build-up
- Two year warranty

SGU UNIVERSAL DESIGN



- Secures to mattress with tree quick-release straps positioned top, bottom and middle for a snug fit
- Universal size fits most standard hospital mattresses 35.5"W x 78"L

SG5 DESIGN (FOR 5" MATTRESS)



- Fits Ultra-Care Excel (#MER-4500) and Excel/5 (#5010)
- Zippered cover for secure fit on 5" mattress system

SG8 DESIGN (FOR 8" MATTRESS)



- Fits Ultra-Care II (#4250) and Excel/8 (#4800)
- Zippered cover for secure fit on 8" mattress system



Item #	Description	L x W	Qty.
SGU_FG	Universal Safe-T-Guard Cover with QR Straps	80" x 35.5"	each
SGU_84	Universal Safe-T-Guard Cover with QR Straps	84" x 35.5"	each
SG5_FG	Safe-T-Guard Zipper Cover for 5" Air	80" x 35.5"	each
SG8_FG	Safe-T-Guard Zipper Cover for 8" Air	80" x 35.5"	each
SGU42_FG	Safe-T-Guard Cover for 42" Mattress	80" x 42"	each
SGU48_FG	Safe-T-Guard Cover for 48" Mattress	80" x 48"	each



Full-Length Bed Rail Pads

- Protects against bumps, bruises
- Vinyl cover wipes clean for easy disinfecting
- Pads do not interfere with the operation of the bed rails
- Attach with three hook & loop straps
- One year warranty



Item #	Description	Size	UOM
30038	Full-Length Bed Rail Pads	48" x 15" x 1"	pair

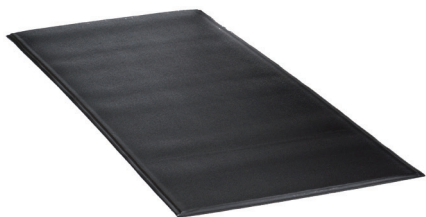


High Density Foam Floor Mat

- Help reduce the possibility of impact-related injuries
- Easy-to-clean vinyl cover
- High density, high compression polyurethane foam
- Flame retardant meets with California Technical Bulletin #117
- Bi-Fold design held together with hook & loop fasteners
- One year warranty



Item #	Description	Size	UOM
30036	High Density Foam Floor Mat	66" x 24" x 2"	each



Bedside Fall Mat



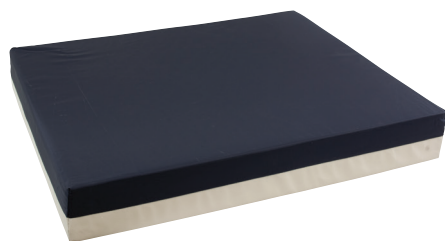
- Closed-cell sponge design
- Low profile beveled edge to prevent tripping
- Meets flammability and head impact criteria
- One year warranty
- Proudly made in the USA



Item #	Description	Size	UOM
FM200	Bedside Fall Mat	70" x 29" x 5/8"	each

WHEELCHAIR CUSHIONS

If a patient has a wheelchair for which they meet Medicare coverage criteria, they also qualify for a General Use Seat and Back Cushion (see page 20).



Basic Foam Seat Cushion

- Economical seating surface provides comfort and pressure reduction
- Designed to assist in the prevention of pressure ulcers
- Cushion contours the seating area
- Removable, waterproof nylon top with non-slip vinyl bottom
- Color: navy
- Weight bearing: See chart below
- 90 day warranty
- TAA Compliant options available, ask your Compass Health Representative



ITEM #	SIZE	Wt. Cap.	UOM	HCPCS
WCF-163	16" x 16" x 3"	275 lbs.	each	E2601
WCF-183	18" x 16" x 3"	300 lbs.	each	E2601
WCF-203	18" x 18" x 3"	325 lbs.	each	E2601
WCF-2083	20" x 16" x 3"	350 lbs.	each	E2601
WCBF-223	22" x 16" x 3"	400 lbs.	each	E2602
WCBF-2283	22" x 18" x 3"	425 lbs.	each	E2602
WCBF-2483	24" x 18" x 3"	450 lbs.	each	E2602

HPCPS
E2601



Basic Comfort Plus Seat Cushion



- 2" high resiliency contoured molded foam for superior pressure relief
- Contoured base reduces floor to seat height while pommel provides stability
- Cover is moisture resistant and vapor permeable poly/nylon with low shear/ friction
- Weight bearing: See chart below
- Proudly made in the USA
- One year warranty



ITEM #	SIZE	Wt. Cap.	UOM
HDC111M-1616	16" x 16" x 3"	275 lbs.	each
HDC111M-1816	18" x 16" x 3"	300 lbs.	each
HDC111M-2016	20" x 16" x 3"	350 lbs.	each



Optimum Pommel Cushion



- Contoured base and pommel
- Four grades of foam
- Inner core has a liner to protect foam
- Cover is a 4 way stretch polyester/polyurethane
- Moisture repellent & low shear/friction
- Weight bearing: See chart below
- Proudly made in the USA
- One year warranty



ITEM #	SIZE	Wt. Cap.	UOM	HPCPS
HDC-POM1616	16" x 16" x 3"	275 lbs.	each	E2607
HDC-POM1816	18" x 16" x 3"	275 lbs.	each	E2607



Coccyx Seat Cushion



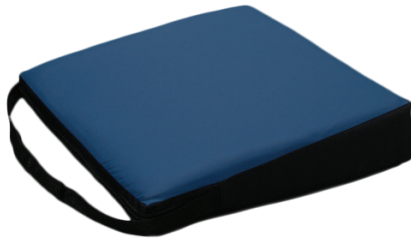
- Unique design for relief of pressure on coccyx area
- Weight bearing: See chart below
- One year warranty
- Proudly made in the USA



ITEM #	SIZE	Wt. Cap.	UOM
HDC-CX1616	16" x 16" x 3"	225 lbs.	each
HDC-CX1816	18" x 16" x 3"	225 lbs.	each
HDC-CX2016	20" x 16" x 3"	225 lbs.	each



Wedge Seat Cushion



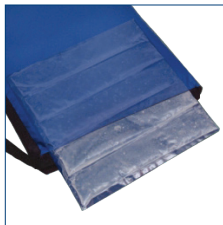
- Slopes from 4" at front to 2" at back to reduce risk of fall-outs
- Weight bearing: See chart below
- One year warranty
- Proudly made in the USA



ITEM #	SIZE	Wt. Cap.	UOM
HDC-WC1616	16" x 16" x 3"	175 lbs.	each
HDC-WC1816	18" x 16" x 3"	175 lbs.	each
HDC-WC2016	20" x 16" x 3"	175 lbs.	each



Optimum Comfort Gel Seat Cushion



- Unique channeled gel bladder prevents gel migration in high-pressure areas
- Gel channels provide relief over the entire cushion area
- Foam base provides additional support
- Inner foam core has a liner to protect foam's integrity
- Weight bearing: See chart below
- Proudly made in the USA
- One year warranty



ITEM #	SIZE	Wt. Cap.	UOM	HCPCS
HDC-9B 16X16	16" x 16"	275 lbs.	each	E2603
HDC-9B 18X16	18" x 16"	300 lbs.	each	E2603
HDC-9B 18X18	18" x 18"	325 lbs.	each	E2603
HDC-9B 20 X16	20" x 16"	350 lbs.	each	E2603
HDC-9B 20X18	20" x 18"	400 lbs.	each	E2603
HDC-9B 22X18	22" x 18"	425 lbs.	each	E2604
HDC-9B 24X18	24" x 18"	450 lbs.	each	E2604

General Use Back Cushion

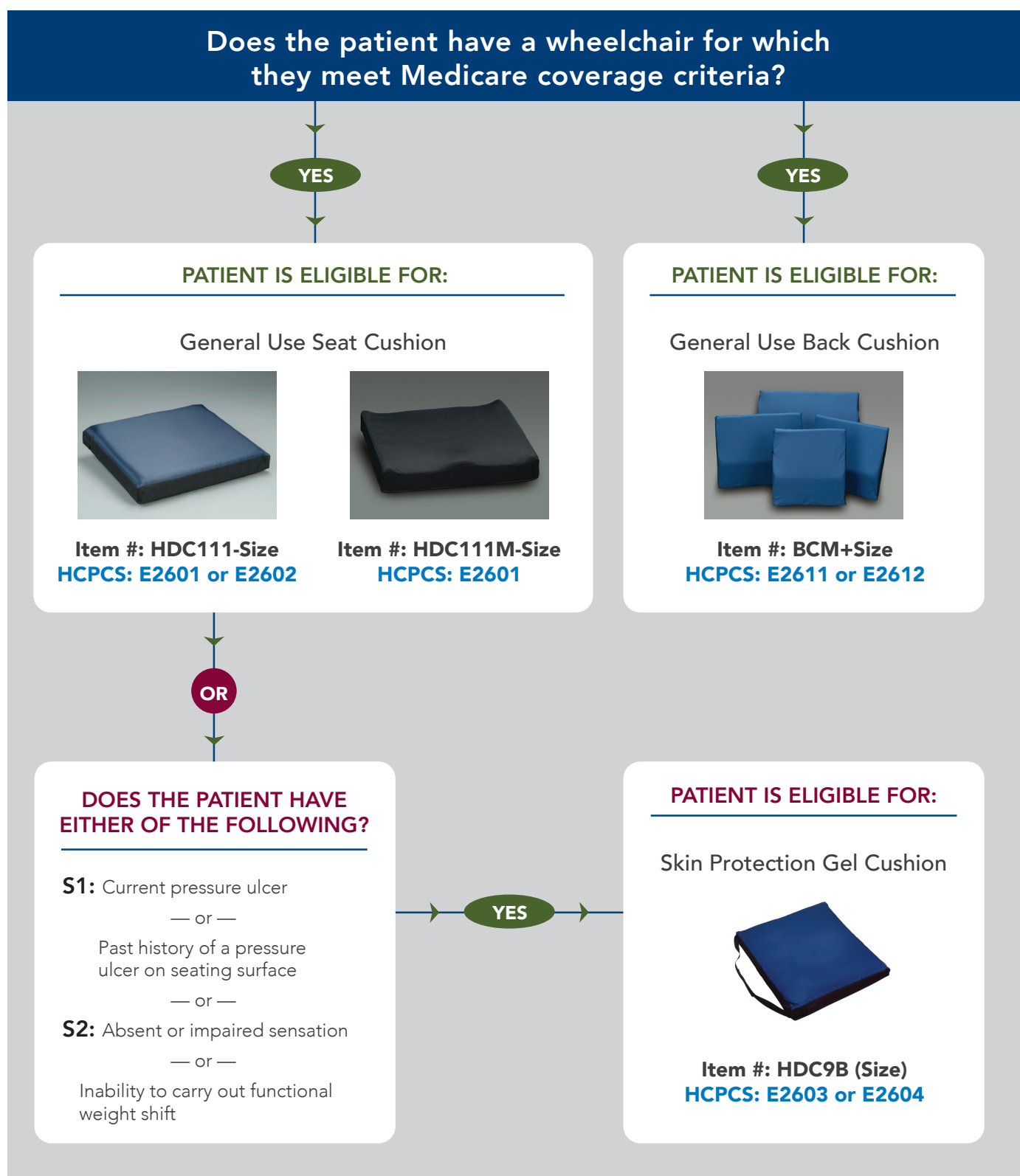


- Provides upper back and lumbar support
- Designed to reduce lower back pain and muscle tension
- Removable, waterproof nylon cover
- Stabilization board provides enhanced rigidity and support
- Non-skid backing
- Color: Black
- 90-day warranty



ITEM #	SIZE	Wt. Cap.	UOM	HCPCS
BKF-1617	16" x 17"	NA	each	E2611
BKF-1817	18" x 17"	NA	each	E2611
BKF-2019	20" x 19"	NA	each	E2611
BKFB-2219	22" x 19"	NA	each	E2611

Medicare Wheelchair Seat Cushion CMS Coding Eligibility



Medicare Criteria: This information is not intended to be, nor should it be considered, billing or legal advice. Providers are responsible for determining the appropriate billing codes when submitting claims to the Medicare programs, and should consult an attorney or other advisor to discuss specific situations in further detail.



6753 Engle Road • Middleburg Hts., OH 44130 **Toll Free:** 1-800 (376-7263) • **Fax:** 440-572-4261
www.compasshealthbrands.com