



Combination Padded Transfer Bench/Commode
Tool-free Removable Back and Arm



FIGURE A



FIGURE B



FIGURE C

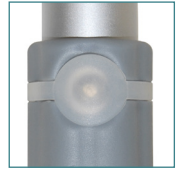


FIGURE D

- Combines transfer bench and commode into one
- Tool-free assembly of back, legs and arm (Figure A - C)
- Comfortable cushioned seat and backrest
- Aluminum A-frame construction is lightweight and provides additional stability
- Height adjusts in ½" increments with unique "Dual Column" extension legs
- No exposed hardware to injure patient
- Extra-large suction cups provide added safety
- New pinch-free cover allows for push pins to be depressed without pinching finger (Figure D)

PRODUCTS

Description

| | |
|------------|---|
| 12005KDC-1 | Combination Padded Transfer Bench/Commode, 1/ea |
|------------|---|

SPECIFICATIONS

Description

| | |
|------------------------|------------------------|
| Outside Legs | 17.25" (W) x 28.5" (D) |
| Seat Dimensions | 24" (W) x 16" (D) |
| Seat Height | 18.5" - 22.5" |
| Weight | 10 lbs. |
| Carton Shipping Weight | 15 lbs. |
| Weight Limit | 400 lbs. |
| Warranty | Limited Lifetime |

ACCESSORIES

Description

| | |
|---------|-----------------------------|
| 12011SS | Sm Suction Cups Pr., 1pr/bx |
| 12011SL | Lg Suction Cups Pr., 1pr/bx |