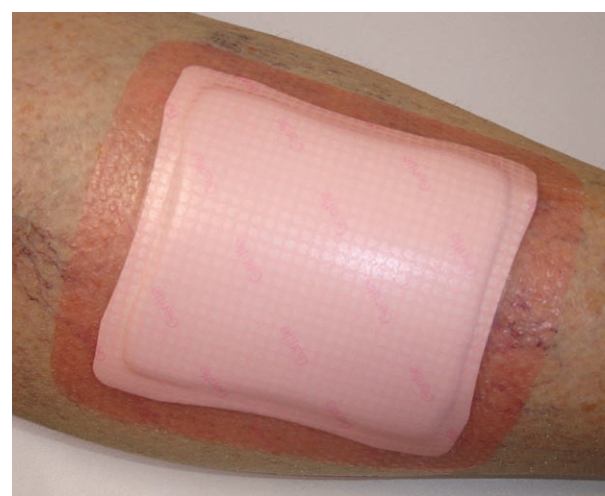




From old ways...



...to ALLEVYN Gentle Border

Ordering information

Code	Size	Quantity
66800269	7.5cm x 7.5cm	10
66800272	12.5cm x 12.5cm	10



References

1 Data on file 0801002

2 Smith & Nephew Data on file report OR-DOF/001

Healthcare Division
Smith & Nephew Limited
621 Rosebank Road, Avondale, Auckland
PO Box 442, Shortland Street
Auckland 1140, New Zealand

Head Office Tel: 09 828 4059 Fax: 09 820 2867
Customer Services Tel: 0800 807 663 Fax: 0800 263 222
Web Site www.smith-nephew.com/nz

° Trademark of Smith & Nephew

© Registered Trademark of Mölnlycke Health Care AB

1816/10 2009

smith&nephew
ALLEVYN°
Gentle Border
Silicone Gel Adhesive
Hydrocellular Dressing

All gain, less pain.



ALLEVYN Gentle Border

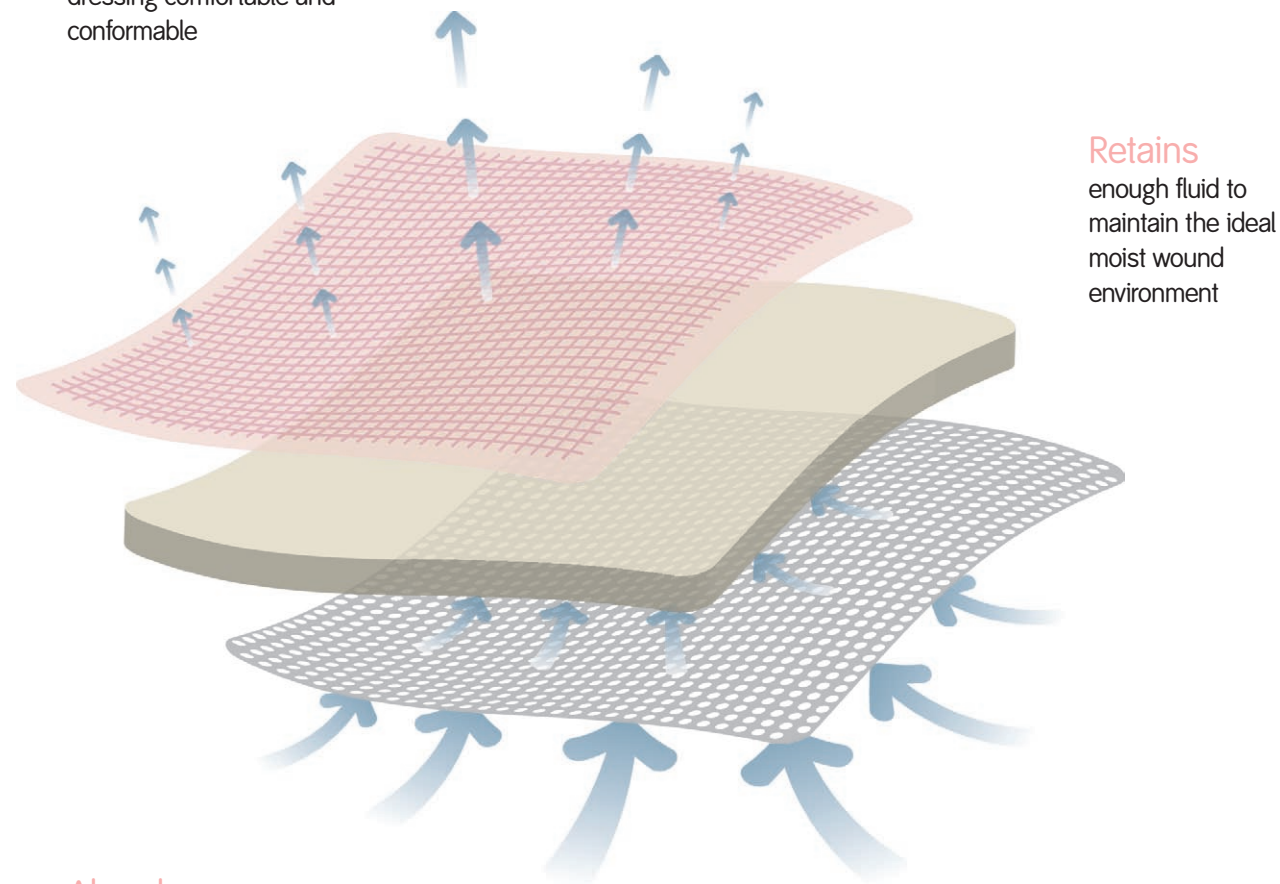
ALLEVYN Confidence

From the very young to the very old

ALLEVYN Gentle Border combines all the benefits of ALLEVYN with the addition of silicone gel adhesive for use on fragile skin

Transpires

enough fluid to keep the dressing comfortable and conformable



Retains

enough fluid to maintain the ideal moist wound environment

Absorbs

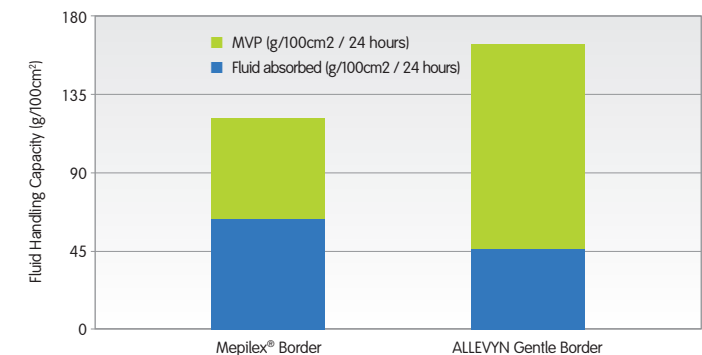
enough fluid to remove unwanted exudate and cellular debris

ALLEVYN Gentle Border Performance

1. Delivering superior fluid management

"I didn't focus on my wound as much as previously because the dressing was not changed as often"

Fluid handling capacities of ALLEVYN Gentle Border and other adhesive foam dressings over a 24 hour period¹

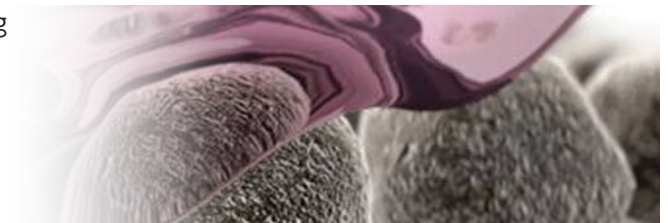


2. Gentle adhesion for fragile skin

ALLEVYN with the addition of silicone gel for minimising pain and trauma during dressing changes

On application the gel adhesive on ALLEVYN Gentle Border allows more points of contact to stay in place

On removal the gel adhesive will stretch, minimising the risk of trauma to the wound and pain to the patient

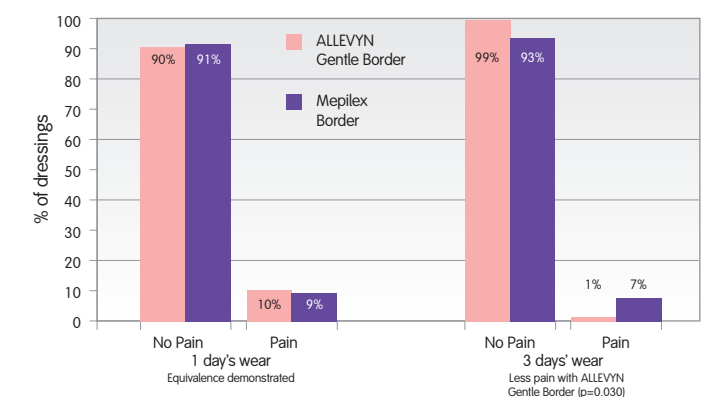


3. Minimise pain on removal

In a 116 volunteer trial ALLEVYN Gentle Border showed significant evidence of causing less pain on dressing removal compared to Mepilex Border after 3 days wear.

"Normally I am quite apprehensive about changing my dressing, but this time it was comfortable and pain free"

ALLEVYN Gentle Border provides less pain on removal than competitor dressing after 3 days' wear²



4. Longer wear time – so important for patients with fragile skin

A greater percentage of ALLEVYN Gentle Border dressings were still in place after 1, 3 and 7 days wear compared to Mepilex Border.

% of dressings in place of ALLEVYN Gentle Border and another silicone dressing after 1, 3 and 7 days wear²

