

LECKEY[®]

Freestander



LECKEY^o

Stronger together.

We work with individuals, therapists and carers to design products with both a clinical and an emotional focus. Using the latest research and clinical understanding, we create practical solutions which are easily integrated into family life, because for us, life is about going, enjoying, participating and doing.



24 hour
postural care for
babies, kids & adults.
Sleeping, Sitting,
Standing, Walking,
Moving, Bathing,
Toileting.



Available in 3 sizes, covering a large growth range from 1 - 18 years of age, the Leckey Freestander comes as standard with angle, depth and height adjustable chest, hip and knee supports ensuring the product meets a wide range of clinical needs.

The unique positioning achieved by the pelvic belt enables de-rotation of the hips; alignment of the pelvis and centre of gravity over the base of support; accommodation or correction of flexion at the hips and knees.

The robust design is ideally suited to classroom, therapy room or home environments.

Easy to set up and adjust, making an ideal solution for multiple users. Easy user transfer using standing slings or transfer belts.





Tray height and angle adjustment

Wipe clean cushions

Angle adjustable chest support

Pelvic belt

Easy to adjust upright standing frame

Adjustable knee supports and knee cups

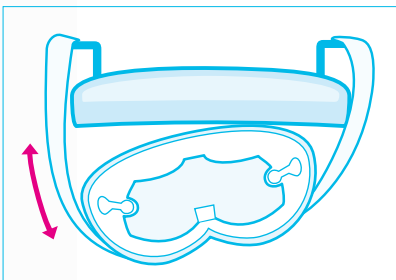
Low footplate height eases standing transfers



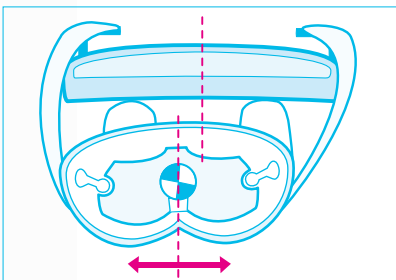
Height and angle adjustable activity tray with discreet bowl



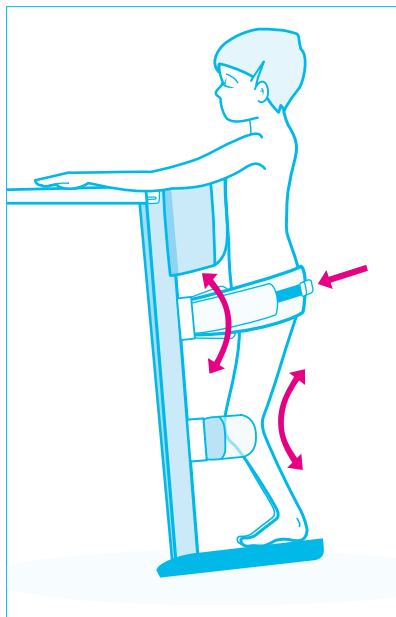
A range of head supports is available.



Rotation



Balance



Flexion



The Totstander is a simple and easy to use upright stander. It can be used as an evaluation tool for therapists to assess a child's standing ability.

Available with flexible or rigid chest support, knee supports and sandals which ensure that the product can meet a large range of infants' needs.

Promotes active standing, movement and weight shifting depending on the child's level of ability.

The Freestander is available in three sizes. The Totstander comes in one size.

Freestander standard set up includes activity tray, bowl and cover, and a choice of: Pelvic belt; knee cups; sandals; flexible laterals. Freestander size 1 and Totstander come as standard in Meadow fabric. Freestander sizes 2 & 3 come in Mondeo Blue.

Product Sizing

Size	1		2		3	
Age	1 - 5		4 - 9 1/2		9 - 18	
Codes	LFS/1		LFS/2		LFS/3	
	mm	inches	mm	inches	mm	inches
Freestander						
Chest plate						
Min Height	470	18.5	680	27	975	38
Max Height	680	27	975	38	1350	53
Base						
Depth	650	26	750	30	750	30
Width	650	26	750	30	750	30
Activity Tray						
Depth	400	16	450	18	500	20
Width	525	21	575	23	625	25
User Weight						
Max	30kg	66lbs	60kg	132lbs	100kg	220lbs
Totstander						
Chest Band Height						
min	470	18.5				
max	640	26				
Base						
Depth	450	18				
Width	450	18				



Leckey Servicing

Our FREE service and support includes:
 Free product training
 Free product set up
 Free product assessment
 Free product re-assessment
 Free repair within 2 year warranty

For service policies on all products outside warranty, please contact Leckey's Customer Service department. James Leckey Design Ltd as manufacturer with sole responsibility declares that all products conform to 93/42/EEC guidelines and EN12182 technical aids for disabled persons general requirements and test methods. Order forms and spare parts lists to extend the service life of the product and allow reissue are available on request or online at www.leckey.com.

Accessories



LFS/#/C Grab rail



LFS/#/L Solid pelvic plate



LFS/#/N Grab posts



1. Contoured head support LIF/2/A,B,C
2. Hyper extension pads LIF/3/A,B
3. Interface frame LIF/1

Suitable for Freestander (not shown) and Pronestander.

Fabric Options



Meadow



Mondeo Blue



LECKEY^o

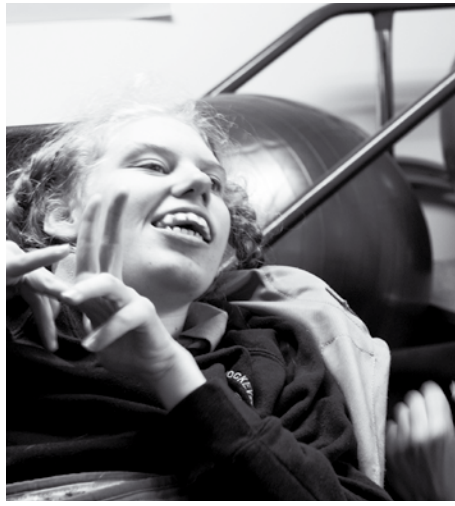
Established in 1983, Leckey is a globally recognised pioneer in the research and development of products that help adults and children with disabilities to go, do, enjoy and participate in everyday activities throughout the day and night.

We take a highly clinical approach to product design and development. Through in-depth clinical research studies with leading universities, and extensive trials with occupational therapists, physiotherapists, users and their families, we continue to develop posturally supportive, family friendly products for all day care, at every stage of life.

Through early intervention, childhood and adulthood Leckey's experienced team of designers, therapists and bioengineers work together to develop products that meet the clinical needs of the healthcare professionals and the social needs of the user.

To achieve this, we work with the healthcare professionals, the individuals and carers who use our products everyday. With their help, we create the dependable, durable, proven and high performance products that we are known for worldwide.





24 hour postural
care for babies,
kids & adults.
Sleeping, Sitting,
Standing, Walking,
Moving, Bathing,
Toileting.