

## Enteral Pump Delivery Set with ENFit<sup>®</sup> Connector

**INSTRUCTIONS FOR USE:** To ensure proper operation of the delivery set, please follow all instructions and illustrations below.

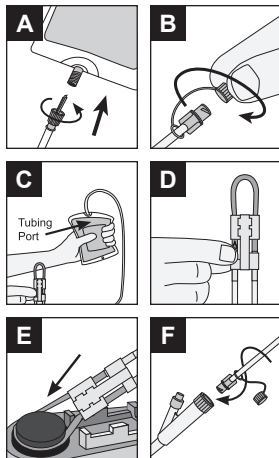
1. Remove protective cover from connector and insert connector tip into compatible port on the enteral formula container. Secure the connector by tightly screwing threaded components together (image A).
2. Unscrew the protective cover counterclockwise from the ENFit connector (image B).

Note: If set is to be used with a carry pack, all air must be removed from the bag and tubing. **Continue to step #3 for instructions on removing the air from collapsible (non-rigid) containers.** If set is to be hung above pump, i.e. on an IV pole, air may remain in container. **Skip to step #4.**

3. Turn collapsible (non-rigid) container upside down and gently squeeze. Tilt bag to keep air at the tubing port (image C). At the same time, follow the instructions in step #4.
4. Gently pinch the teal colored tubing **below** the "O" symbol (image D). Hold this position until air is expelled from tubing. Gently squeeze bag at the same time to assist fluid flow. If fluid does not flow, pinch may be too tight.
5. To expel air from tube using pump prime feature, refer to pump and Operator's Manual for instructions.

Note: Priming with the pump is recommended when using thick formulas because it is faster than priming by gravity.

6. Position silicone tubing around pump wheel stretching lightly. Seat cassette into the pump (image D). Close pump door.
7. Screw the ENFit connector clockwise into feeding tube firmly by hand (image F). Be careful not to overtighten.



## WARNINGS AND PRECAUTIONS

- It is important to keep the air sensor free of debris including spilled fluids or food that may adhere to the sensor and prevent detection of air in the tubing. Use a cotton swab to clean the pathways of the cassette receptacle. (Refer to the pump Operator's Manual for further cleaning instructions).
- When using a programmed dose, infinite dose or interval feeding setting, the volume of food in the bag/bottle should be monitored throughout the feeding cycle to ensure the appropriate dose has been received by the patient.
- Follow manufacturer guidelines related to maximum nutrition hang time.
- Device contains small parts. Dispose of or store connector cap when not in use to avoid choking hazard for children under 3 years.
- Avoid leaving tubing and cords where infants, children, or those deemed at high risk for medical line entanglement, can become entangled. Be aware that if these items become wrapped around a patient's neck, there is an increased risk of strangulation or death. Caregivers of patients who are at risk for entanglement should discuss with their health care provider how to properly manage their lines and properly monitor patients based on their needs while in use.

**WARNING:** This product can expose you to chemicals including vinyl chloride, which is known to the State of California to cause cancer. For more information go to [www.P65Warnings.ca.gov](http://www.P65Warnings.ca.gov).



THIS DEVICE  
IS NOT MADE  
WITH DEHP



REPLACE  
EVERY  
24 HOURS



NOT FOR  
IV USE



**THE INFINITY DELIVERY SET  
IS INTENDED TO CONNECT  
TO ENTERAL FEEDING TUBES**

**NOT MANUFACTURED  
WITH NATURAL  
RUBBER LATEX**

**DELIVERY SETS ARE MADE  
WITH MATERIALS THAT DO  
NOT CONTAIN BISPHENOL A  
(BPA) IN THE FLUID PATH.**