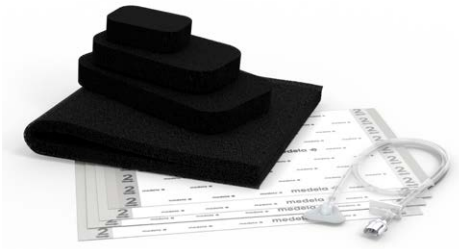


# Invia® NPWT Dressings

## THERAPY CONFIDENCE WITH EASE



### Therapy Confidence

- **Intelligent** Pressure control from the pump to the wound site<sup>1</sup>
- **Dynamic** Exudate Removal helps prevent blockages from the wound site to the pump
- **Secure**<sup>2</sup> tubing attachment with an audible click

### Simplified Management

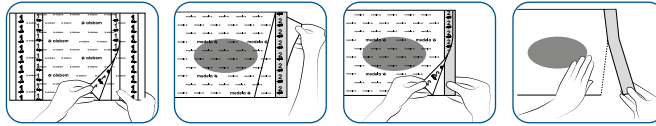
- **Convenient**<sup>2</sup> Quick-connector tubing interface
- **Intuitive** transparent film handling
- **Easy** dressing application in difficult patient anatomy locations

**Medela provides efficient solutions to support clinicians with Negative Pressure Wound Therapy management in all patient care settings.**

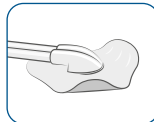
The Invia dressing kits with FitPad in conjunction with the Invia Negative Pressure Wound Therapy (NPWT) systems deliver therapy **confidence by intelligently controlling set pressure** at the wound site<sup>1</sup>. Invia NPWT systems dynamically adapt the air flow cycle to both volume and viscosity of the fluid in the tubing to optimize exudate removal.

**Select** the appropriate dressing **with ease** from our streamlined product offer. The dressing kits share the same transparent film and suction interface components; you only have to select the type of wound filler (foam or gauze) and the appropriate size.

Experience an **established application technique** thanks to the transparent film with intuitive markings.

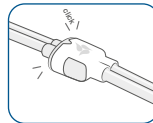
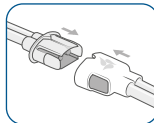


The **low profile design and flexible wings** of the suction interface (Invia FitPad) allow appropriate placement in difficult anatomic locations.



Overall height  
8.5 mm  
Wing thickness  
0.45 mm

The **Quick-connector** provides an **easy and secure** tubing attachment<sup>2</sup> with an audible click.



**Key features at a glance**

- The Invia NPWT System with FitPad provides Intelligent Pressure Control with Dynamic Exudate Removal to help ensure NPWT is reliably delivered and controlled at the wound site
- Easy application of transparent film and FitPad
- Convenient and secure tubing attachment with the Quick-connector
- Streamlined offering of foam and gauze dressings

**Technical data**

<b>Foam</b> Reticulated polyether and polyurethane, hydrophobic material	Pore size: 600–800 microns
	Tensile strength: 20 PSI/138 kPa <small>PSI: Pounds per Square Inch</small>
<b>Transparent Film</b> Polyurethane film with acrylic adhesive	Size: 26 cm x 32 cm
	MVTR: 385 g/m <sup>2</sup> /day <small>MVTR: Moisture Vapor Transmission Rate</small>

Invia foam or gauze dressings are intended to be used in conjunction with the Invia Negative Pressure Wound Therapy (NPWT) Systems to deliver negative pressure to the wound.

**Find out more about Medela NPWT Portfolio at [www.medelahealthcare.us](http://www.medelahealthcare.us)**

CAUTION: U.S. Federal law restricts this device to sale by or on the order of a physician.

Medical Vacuum Technology  
for Healthcare Professionals

**Please contact us or your local Medela representative for details.**

Medela, Invia, and Invia FitPad are registered in the US Patent and Trademark Office. No trademark registrations in Canada.

**Local contact**

Medela AG  
Lättichstrasse 4b  
6340 Baar, Switzerland  
[www.medelahealthcare.com](http://www.medelahealthcare.com)

**USA**  
Medela LLC  
1101 Corporate Drive  
McHenry, Illinois 60050  
USA  
Phone +1 877 735 1626  
Fax +1 815 307 8942  
[info-healthcare@medela.com](mailto:info-healthcare@medela.com)  
[www.medelahealthcare.us](http://www.medelahealthcare.us)

**Canada**  
Medela Canada Inc.  
4160 Sladeview Cres., Unit #8  
Mississauga, Ontario, L5L 0A1  
Canada  
Phone +1 800 435 8316  
Fax +1 800 995 7867  
[info@medela.ca](mailto:info@medela.ca)  
[www.medelahealthcare.ca](http://www.medelahealthcare.ca)

1 Performance data on file at Medela AG  
2 Usability Validation data on file at Medela AG