

# Application Guide\*

NEW **AQUACEL**<sup>®</sup>  
foam



## Standard Application:

AQUACEL<sup>®</sup> foam dressing may be used as a primary dressing or a secondary dressing.

- 1 Always ensure the skin surrounding the wound is clean and dry. Choose a dressing size and shape to ensure that the central absorbent pad (area within the adhesive window), is **1/3 inch larger (1 cm)** than the wound area.

The dressing can be cut to shape for convenience. If the Adhesive dressing is cut, additional tape may be required to secure it in place. Additional tape, or other means of fixation, will be required to secure the AQUACEL<sup>®</sup> foam Non Adhesive dressing in place.



- 2 Remove the dressing from the sterile pack while minimizing finger contact. Remove the release liner if using the Adhesive dressing.



- 3 Hold the dressing over the wound and line up the center of the dressing with the center of the wound. Place the pad directly over the wound. For the Adhesive dressing, smooth down the adhesive border. Additional tape or other means of fixation will be required to secure the Non Adhesive dressing. Discard any unused portion of the product after dressing the wound.

## Application Areas:

For difficult to dress anatomical locations, such as the sacrum, or heel, the specifically shaped adhesive dressing may be used.

### Sacral dressing - using 8 in x 7 in (20 cm x 16.9 cm)



Remove the release liner. Hold the dressing at its edges. Fold the dressing in half, with the back sides touching. Place the fold into the natal cleft.



Keep the center pad in contact with the wound and smooth the edges of the dressing into place.

### Heel dressing - using 8 in x 5.5 in (19.8 cm x 14 cm)



Remove the release liner. Line up top of dressing with the back of the heel and secure.

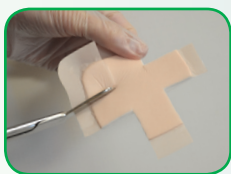


Fold the dressing over the bottom of the heel and smooth down to complete the application.

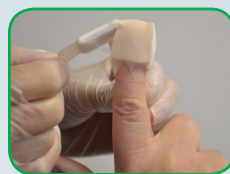


**For small feet,** use a 5 in x 5 in (12.5 cm x 12.5 cm) AQUACEL<sup>®</sup> foam dressing. Do not remove the release liner. Cut two slits diagonally, approximately 2 in deep as shown. Follow heel dressing application steps.

### Finger/Toe dressing



Choose an appropriately sized AQUACEL<sup>®</sup> foam dressing. Do not remove the release liner. Cut the dressing into an even cross.



Remove the release liner and place the center of the dressing over the wound, folding the arms of the cross down along the length of the finger.



Secure the arms of the cross in place.

### Interdigital dressing



Choose an appropriately sized AQUACEL<sup>®</sup> foam dressing. Do not remove the release liner. Fold in half and cut five equal slits in the dressing, approximately .5 in (1.5 cm) in length, sized and spaced according to the size of the digits to be left uncovered.



Remove the release liner and place the dressing over the toes or fingers, feeding them through the slits. Ensure the dressing is snug but not tight.

AQUACEL<sup>®</sup> foam Adhesive and Non Adhesive dressings may be cut to any shape or size to meet your wound care needs. Additional tape or other means of fixation will be required to secure the dressings in place.

## Dressing Removal:



The dressing should be changed when clinically indicated (i.e. leakage, bleeding, increased pain, suspicion of infection). The AQUACEL<sup>®</sup> foam dressing maximum recommended wear time is up to seven days.

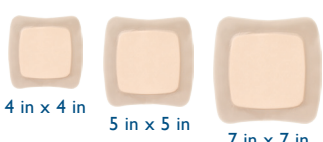
The wound should be cleansed at appropriate intervals.



To easily remove the dressing with its gentle silicone border, press down gently on the skin and carefully lift one corner of the dressing. Continue until all edges are free. Carefully lift away the dressing and discard according to local clinical protocols.

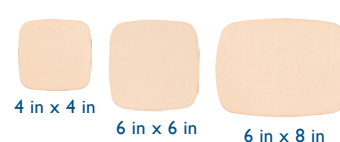
## AQUACEL<sup>®</sup> foam dressing Ordering Information

Adhesive



| Adhesive        |                        |                   |                    |             |
|-----------------|------------------------|-------------------|--------------------|-------------|
| Product Codes   | Dressing Size (inches) | Pad Size (inches) | Dressings Per Pack | HCPCS Codes |
| 420680          | 4 x 4                  | 2.75 x 2.75       | 10                 | A6212       |
| 420619          | 5 x 5                  | 3.3 x 3.3         | 10                 | A6212       |
| 420621          | 7 x 7                  | 5.3 x 5.3         | 10                 | A6213       |
| Adhesive Heel   |                        |                   |                    |             |
| 420625          | 8 x 5.5, Heel          | 5.5 x 3.4         | 5                  | A6213       |
| Adhesive Sacral |                        |                   |                    |             |
| 420626          | 8 x 7, Sacral          | 4.5 x 5.3         | 5                  | A6213       |

Non Adhesive



| Non Adhesive  |                        |                   |                    |             |
|---------------|------------------------|-------------------|--------------------|-------------|
| Product Codes | Dressing Size (inches) | Pad Size (inches) | Dressings Per Pack | HCPCS Codes |
| 420633        | 4 x 4                  | 4 x 4             | 10                 | A6209       |
| 420635        | 6 x 6                  | 6 x 6             | 5                  | A6210       |
| 420637        | 6 x 8                  | 6 x 8             | 5                  | A6210       |

\*Please refer to AQUACEL<sup>®</sup> foam dressing package insert for complete Instructions for Use.

AQUACEL, the AQUACEL logo, ConvaTec, the ConvaTec logo, Hydrofiber and the Hydrofiber logo are registered trademarks in the U.S. and Tried. True. Trusted. is a trademark of ConvaTec Inc.

© 2012 ConvaTec Inc. AP-012428-US



To learn more about AQUACEL<sup>®</sup> foam dressing or to arrange a visit from your ConvaTec representative, please call

**1-800-422-8811**

[www.convatec.com](http://www.convatec.com)

