

## AeroChamber® Holding Chamber for Mechanical Ventilation (HC MV)

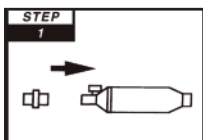
An aerosol holding chamber for use in a ventilator circuit or a resuscitation bag. The AeroChamber® HC MV is designed to be used with virtually all metered dose inhalers (MDI) as prescribed by a physician.

Before using the AeroChamber® HC MV, please carefully read all INSTRUCTIONS, CAUTION and WARNING statements.

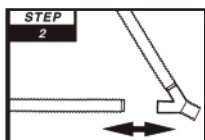
The AeroChamber® HC MV comes with an adapter that permits the use of the AeroChamber® HC MV within a ventilator circuit or a resuscitation bag.

**WARNING:** WHEN USED WITH A VENTILATOR CIRCUIT, THE AeroChamber® HC MV SHOULD BE USED IN THE INSPIRATORY LIMB AS DIRECTED AND ONLY WITH ADULT CIRCUITS. ANY CONTINUOUS FLOW PARAMETERS (E.G. "FLOWBY") MUST BE DISABLED DURING AEROSOL DELIVERY.

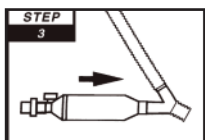
### INSTRUCTIONS FOR USE IN A VENTILATOR CIRCUIT



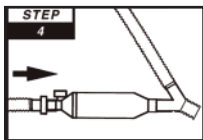
Attach the 15/22 mm adapter to the 15mm O.D. end of the AeroChamber® HC MV.



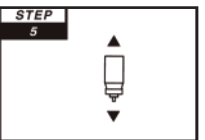
Disconnect the inspiratory limb at the Y-connector



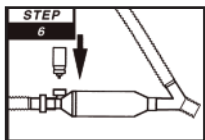
Attach the 22mm I.D. end of the AeroChamber® HC MV to the Y-connector.



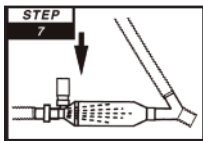
Attach the inspiratory limb to the 15/22 mm adapter of the AeroChamber® HC MV.



Shake the MDI to properly mix the medication according to the manufacturer's guidelines.



Insert the MDI canister into the actuator port of the AeroChamber® HC MV.



After exhalation and just prior to the next inspiration, press down on the MDI to spray medication into the AeroChamber® HC MV. The medication will be carried into the patient's lungs during the next inspiratory phase.

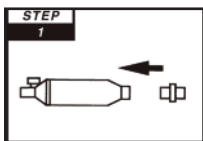
**CAUTION:** DO NOT SPRAY MORE THAN ONE PUFF AT A TIME INTO THE AeroChamber® HC MV FOR EACH INHALATION. WAIT AT LEAST 10 SECONDS BETWEEN PUFFS TO ALLOW MDI TO RECHARGE APPROPRIATELY.

8. For each puff prescribed by the physician, repeat steps 5 to 7.

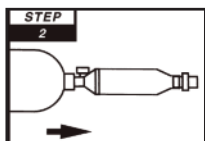
9. Following treatment, remove AeroChamber® HC MV from circuit and reconnect inspiratory limb to Y-connector. Return the AeroChamber® HC MV to its protective bag and store it properly near the patient's bed.

**WARNING:** The AeroChamber® HC MV IS NOT DESIGNED TO BE LEFT IN THE VENTILATOR CIRCUIT. WHEN THE TREATMENT IS COMPLETED, REMOVE THE AeroChamber® HC MV AND RECONNECT THE VENTILATOR CIRCUIT. EXAMINE ALL PARAMETERS OF THE VENTILATOR FOR CORRECT REINSTATEMENT OF VENTILATION. FAILURE TO DO SO MAY RESULT IN SERIOUS PATIENT INJURY OR DEATH.

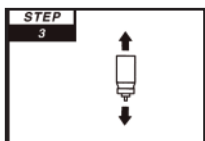
### INSTRUCTIONS FOR USE WITH A RESUSCITATION BAG



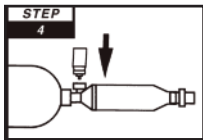
Attach the 15/22 mm adapter to the 15mm I.D. end of the AeroChamber® HC MV.



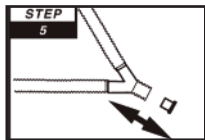
Attach the output opening of the resuscitation bag to the 15 mm O.D. end of the AeroChamber® HC MV.



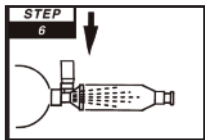
Shake the MDI canister to properly mix the medication according to the inhaler manufacturer's guidelines.



Insert the MDI canister into the actuator port of the AeroChamber® HC MV.



Disconnect the ventilator circuit from the patient's endotracheal airway and attach the AeroChamber® HC MV to the patient's endotracheal airway.



Before squeezing the resuscitation bag, press down on the MDI to spray the medication into the AeroChamber® HC MV. Immediately squeeze the resuscitation bag one or two times for each puff of medication that is needed and as prescribed by the physician.

**CAUTION:** DO NOT SPRAY MORE THAN ONE PUFF AT A TIME INTO THE AeroChamber® HC MV FOR EACH INHALATION. WAIT AT LEAST 10 SECONDS BETWEEN PUFFS TO ALLOW MDI TO RECHARGE APPROPRIATELY.

**WARNING:** BETWEEN PUFFS ENSURE PATIENT IS PROPERLY VENTILATED BY RECONNECTION TO VENTILATOR CIRCUIT OR BY VENTILATING WITH THE RESUSCITATION BAG.

7. For each puff prescribed by the physician, repeat steps 3 to 6.

8. Following treatment, disconnect AeroChamber® HC MV from patient and reconnect ventilator circuit to patient's endotracheal airway. Return the AeroChamber® HC MV to its protective bag and store it properly near the patient's bed.

### NOTES

1. Read the patient instruction provided with your metered dose inhaler.
2. Before you use the AeroChamber® HC MV visually inspect for foreign objects.
3. Mishandling of the AeroChamber® HC MV may alter the function and/or overall reliability of the unit.

**SPECIAL NOTE:** FOR PATIENTS THAT REQUIRE A HIGH OXYGEN CONCENTRATION, CONNECT THE AeroChamber® HC MV TO THE RESUSCITATION BAG. FLUSH THE ASSEMBLY WITH AN OXYGEN SUPPLY EQUIVALENT TO OR GREATER THAN THE PATIENT'S OXYGEN SUPPLY PRIOR TO CONNECTING THE ASSEMBLY TO THE ENDOTRACHEAL AIRWAY.

**SPECIAL NOTE:** THE AeroChamber® HC MV SHOULD BE VISUALLY INSPECTED BEFORE AND AFTER USE FOR CHANGES, INCLUDING BUT NOT EXCLUSIVE TO, DEFECTS AND CLEANLINESS. THE AeroChamber® HC MV SHOULD BE REPLACED WHEN DEEMED NECESSARY AFTER THE ABOVE INSPECTION OR WHENEVER THE CIRCUIT IS REPLACED.

The AeroChamber® HC MV is intended for single patient use only.

This product is BPA FREE

**CAUTION:** Federal (USA) law restricts this device to sale by or on the order of a physician.

® is a registered trademark of Monaghan Medical Corporation or an affiliate of Monaghan Medical Corporation

Monaghan Medical Corporation  
5 Latour Avenue, Suite 1600  
Plattsburgh, NY 12901

This device was Made in the USA.



monaghan™