

Actimove[®]

Feel good. Move better.

A man with dark curly hair and a beard is captured in a dynamic pose, dribbling a soccer ball on a polished indoor court. He is wearing a dark blue and light blue gradient athletic t-shirt, dark shorts, and a black knee brace on his left knee. Several bright green cones are arranged in a line on the court floor. The background shows large windows with vertical blinds, suggesting an indoor sports facility.

Actimove[®]
Catalog 2019/2020

INDEX

Actimove® SPORTS EDITION

Wrist

Actimove® Wrist Support Adjustable	8
Actimove® Wrist Support Elastic Wrap Around	9
Actimove® Wrist Stabilizer Removable Metal Stay	10

Thumb

Actimove® Thumb Stabilizer Extra Stays	12
--	----

Knee

Actimove® Patella Strap Adjustable	13
Actimove® Dual Knee Strap Adjustable	14
Actimove® Knee Support Closed Patella	15
Actimove® Knee Support Open Patella	16
Actimove® Knee Support Open Patella Adjustable	17
Actimove® Knee Stabilizer, Adjustable Horseshoe and Stays	18
Actimove® Knee Brace, Wrap Around, Simple Hinges, Condyle Pads	20
Actimove® Knee Brace, Wrap Around, Polycentric Hinges, Condyle Pads	21
Actimove® Knee Brace, Adjustable Horseshoe, Simple Hinges, Condyle Pads	22
Actimove® PF Knee Brace – Lateral Support, Simple Hinges, Condyle Pads, J-shaped Buttress	23

Ankle

Actimove® Ankle Support	24
Actimove® Ankle Support, Adjustable	25
Actimove® Ankle Support, Elastic Wrap Around	26
Actimove® Ankle Stabilizer, Criss-Cross Straps	29

Back

Actimove® Back Support 4 Stays, Adjustable Double Layer Compression	30
Actimove® Back Stabilizer, Rigid Panel with Pressure Pads, SMART Easy-Closing-Pulley-System	32

Elbow

Actimove® Elbow Strap, Hot/Cold Pack	34
Actimove® Elbow Support Adjustable	35

Shoulder

Actimove® Shoulder Support, Extra Pocket for Optional Hot/Cold Pack	36
---	----

Thigh

Actimove® Thigh Support Adjustable	37
------------------------------------	----

Actimove® EVERYDAY SUPPORTS

Wrist

Actimove® Wrist Stabilizer, Carpal Pre-shaped Metal Stay	40
--	----

Knees

Actimove® Mild Knee Support	41
Actimove® Knee Support Closed Patella	42
Actimove® Knee Support Closed Patella, 2 Stays	43
Actimove® Knee Support Open Patella, 4 Stays	44

Ankle

Actimove® Mild Ankle Support	46
Actimove® Ankle Support	47

Back

Actimove® Back Support, High-Density Foam Panel, Adjustable Double Layer Compression	48
--	----

Elbow

Actimove® Mild Elbow Support	49
Actimove® Elbow Support	50
Actimove® Elbow Support Pressure Pads and Strap	51

Actimove® ARTHRITIS CARE

Wrist

Actimove® Wrist Support	54
-------------------------	----

Hands

Actimove® Arthritis Gloves	56
----------------------------	----

Knee

Actimove® Knee Support	59
------------------------	----

Ankle

Actimove® Ankle Support	60
-------------------------	----

Elbow

Actimove® Elbow Support	61
-------------------------	----

Actimove® KIDS

Wrist

Actimove® Wrist Stabilizer, Removable Metal Stay	64
--	----

Knee

Actimove® Knee Support Open Patella	65
-------------------------------------	----

Ankle

Actimove® Ankle Support	66
-------------------------	----

Elbow

Actimove® Elbow Support Adjustable	67
------------------------------------	----



Whether your patients are running a marathon, recovering from an injury, overcoming daily arthritis or movement-pain related challenges, they can rely on Actimove[®] to help them with pain relief and provide them with the support they need.

Actimove offers a broad portfolio of medically engineered braces & supports, designed for easy self-selection. Addressing the individual needs of your varied patients, we have developed five new ranges of high-quality orthopedic products designed for functionality, comfort, and help to relieve pain, with special features such as COOLMAX[®] AIR*:

Actimove Sports Edition, Actimove Everyday Supports, Actimove Arthritis Care and Actimove Kids give patients the confidence to overcome physical limitations and pain-related issues to continue taking on their daily life challenges.

Actimove is a brand of Essity, a leading hygiene and health company dedicated to improving well-being through products and solutions. Essity prides itself on providing medical devices, drawing from 80 years of experience in non-invasive orthopedics¹ in hospitals with market leading brands like ORTHO-GLASS[®] and Lightplast Pro[®].

The result is excellent quality products that are reliable and thoroughly tested that will suit your patients' medical needs and lifestyle.

Actimove. Feel good. Move better.

¹ In the market since 1940: the leading Plaster of Paris brand Gypsona[®].

* COOLMAX[®] AIR is a trademark of The LYCRA company

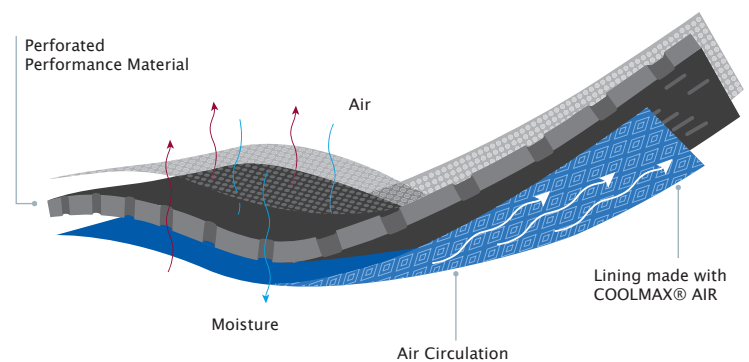
Actimove® SPORTS EDITION

Younger, sporty people often wear neoprene braces & supports after sports injuries or to prevent re-injury. A major complaint about these is that they are too hot to wear and cause excessive sweating.¹

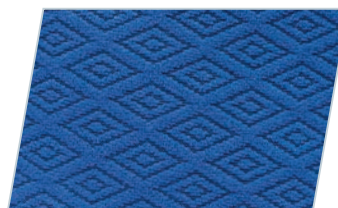
Actimove Sports Edition aids with pain relief and healing through balanced warmth and medical compression. They offer great comfort from excellent moisture management and skin-friendly materials.

- Made with **COOLMAX® AIR**² technology, Actimove Sports Edition is engineered for quick drying and exceptional breathability to keep people cool and dry.
- The **perforated performance material** of Actimove Sports Edition is neoprene-free, latex-free, and friendly to the skin.
- Furthermore, **validated compression** properties for support and stability help reduce swelling and manage pain relief.

COOLMAX®
PRO



3D Diamond Lining with COOLMAX® AIR



Perforated Performance Material



¹ Essity End-User Validation Research 10/2012; n= 400 OSG shoppers in USA

² COOLMAX® AIR is a trademark of The LYCRA company



Actimove® Wrist Support

Adjustable

Durable, adjustable support for weak or injured wrists

- Pain relief and healing are supported through balanced warmth and medical compression.
- Great comfort with exceptional breathability through quick drying perforated performance material.
- Neoprene-free, made with COOLMAX® AIR technology.
- Adjust the level of support for comfort no matter the activity.
- Allows for comfortable, dry hands based on the open palm design.
- Universal sizing.
- Can be worn left or right.

Fields of application:

- Weak or injured wrist
- Overuse syndromes
- Mild sprains and strains
- Arthritis
- Support during everyday activities

3D Diamond Lining with COOLMAX® AIR



	Ref / BNR	Size	Measurements	Color
	7562610	Universal	5½" - 8"	Black



Actimove® Wrist Support

Elastic Wrap Around

Firm and adjustable support, padded for comfort for aching and fatigued wrists

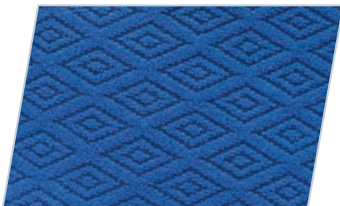
- Enjoy sports, as pain relief and healing are supported through balanced warmth and medical compression.
- Great comfort with exceptional breathability through quick drying perforated performance material.
- Neoprene-free, made with COOLMAX® AIR technology.
- Firm and adjustable support from powerful elastic strap no matter the activity.
- Comfortable to wear because of terrycloth padding.
- Universal sizing.
- Can be worn left or right.
- Contains latex.

Fields of application:

- Weak, aching and fatigued wrists
- Support during sports



3D Diamond Lining with COOLMAX® AIR



Ref / BNR	Size	Measurements	Color
7341680	Universal	5½" - 8"	Black



Actimove® Wrist Stabilizer

Removable Metal Stay, Left or Right

Anatomically shaped stay for secure stabilization, managing sprains and strains

- Pain relief and healing are supported through balanced warmth and medical compression.
- Comfort and good breathability through neoprene-free performance material.
- Stabilizes wrist through an anatomically shaped removable stay for left and right hand application.
- Quick and easy to fit with slip-on design and individually adjustable straps.
- Special comfort in a premium soft material and seamless design.
- Can be easily worn under clothing due to low profile.
- Three sizes available.
- Can be worn left or right.

Fields of application:

- Tendonitis
- Sprains, strains, soft tissue injuries
- Osteoarthritis
- Rheumatoid arthritis
- Post-operative care
- After cast removal



	Ref / BNR	Size	Measurements	Color
	7572931	S	5" - 6¼"	Black
	7572932	M	6¼" - 7½"	Black
	7572933	L	7½" - 9"	Black



Actimove® Thumb Stabilizer

Extra Stays

Anatomically shaped stays, managing thumb injuries, keeping finger dexterity

- Pain relief and healing are supported through balanced warmth and medical compression.
- Comfort and good breathability through neoprene-free performance material.
- Stabilization of the thumb through two integrated anatomically shaped stays.
- Comfortable to wear because of premium quality soft material.
- Firm and adjustable wrist support from powerful elastic strap.
- Full finger movement and hand dexterity from special open design.
- Two sizes available.
- Comes in black or beige.


Fields of application:

- Mild to moderate strains and sprains (e.g., skier's thumb)
- Inflammation
- Onset of osteoarthritis
- Thumb pain from repetitive motion activities, like texting or gaming



Full Finger Movement



	Ref / BNR	Color	Ref / BNR	Color	Size	Measurements
	7563630	Black	75636-32	Beige	S/M	5½" - 7½"
	7563631	Black	75636-33	Beige	L/XL	7" - 9"

Actimove® Patella Strap

Adjustable

Targeted patella pain relief that stays in place

- Enjoy sports, as pain relief and healing are supported through balanced warmth and medical compression.
- Great comfort with exceptional breathability through quick drying perforated performance material.
- Neoprene-free, made with COOLMAX® AIR technology.
- Targeted pain relief by increased pressure on patella tendon from the high density EVA shaped insert.
- Stays in place under activity due to silicone dot lining.
- Adjust the level of support, for comfort no matter the activity.
- Universal sizing.
- Can be worn left or right.

Fields of application:

- Patella tendonitis
- Patellofemoral pain syndrome
- Chondromalacia patella
- Osgood-Schlatter disease



Silicone Dot Lining



Ref / BNR	Size	Measurements	Color
7558920	Universal	11½" - 16½"	Black

Actimove® Dual Knee Strap

Adjustable

Dual strap design for additional stability and patella pain relief

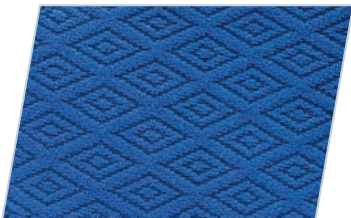
- Enjoy sports, as pain relief and healing are supported through balanced warmth and medical compression.
- Great comfort with exceptional breathability through quick drying perforated performance material.
- Neoprene-free, made with COOLMAX® AIR technology.
- Additional stability from dual strap design supporting the painful patella.
- Targeted pain relief by increased pressure on patella tendon from the high density EVA shaped insert.
- Adjust the level of support, for comfort no matter the activity.
- Four sizes.
- Can be worn left or right.

Fields of application:

- Patella and quadriceps tendonitis
- Patellofemoral pain syndrome
- Chondromalacia patella
- Osgood-Schlatter disease



3D Diamond Lining with COOLMAX® AIR



	Ref / BNR	Size	Measurements	Color
	7559110	S	13" - 14½"	Black
	7559111	M	14½" - 16"	Black
	7559112	L	16" - 17¾"	Black
	7559113	XL	17¾" - 19¼"	Black

Actimove® Knee Support

Closed Patella

Fast, easy and secure protection for minor knee injuries

- Enjoy sports, as pain relief and healing are supported through balanced warmth and medical compression.
- Great comfort with exceptional breathability through quick drying perforated performance material.
- Neoprene-free, made with COOLMAX® AIR technology.
- Feel secure as knee is protected by a snug fit that stays in place.
- Fast & easy slip-on style.
- Seven sizes available.
- Available in black or navy.

Fields of application:

- Painful knee injuries and prevention
- Slight strains, sprains and contusions
- Minor meniscal damages
- Joint swelling



Perforated Performance Material

3D Diamond Lining with



	Ref / BNR	Color	Ref / BNR	Color	Size	Measurements
	7558620	Navy	7558627	Black	XS	12" - 14"
	7558621	Navy	7558628	Black	S	14" - 16"
	7558622	Navy	7558629	Black	M	16" - 18"
	7558623	Navy	7558630	Black	L	18" - 20"
	7558624	Navy	7558631	Black	XL	20" - 22"
	7558625	Navy	7558632	Black	XXL	22" - 24"
	7558626	Navy	7558633	Black	XXXL	24" - 26"

Actimove® Knee Support

Open Patella

Fast, easy and secure protection, relieving patella pain in minor knee injuries

- Enjoy sports, as pain relief and healing are supported through balanced warmth and medical compression.
- Great comfort with exceptional breathability through quick drying perforated performance material.
- Neoprene-free, made with COOLMAX® AIR technology.
- Helps to relieve patella pain. Knee cap pressure is reduced by open design.
- Feel secure as knee is protected by a snug fit that stays in place.
- Fast & easy slip-on style.
- Seven sizes available.
- Available in black or navy.

Fields of application:

- Painful knee injuries and prevention
- Slight strains, sprains and contusions
- Minor meniscal damages
- Joint swelling



	Ref / BNR	Color	Ref / BNR	Color	Size	Measurements
	7558512	Navy	7558519	Black	XS	12" - 14"
	7558513	Navy	7558520	Black	S	14" - 16"
	7558514	Navy	7558521	Black	M	16" - 18"
	7558515	Navy	7558522	Black	L	18" - 20"
	7558516	Navy	7558523	Black	XL	20" - 22"
	7558517	Navy	7558524	Black	XXL	22" - 24"
	7558518	Navy	7558525	Black	XXXL	24" - 26"

Actimove® Knee Support

Open Patella Adjustable

Adjustable and secure protection, relieving patella pain in minor knee injuries

- Enjoy sports, as pain relief and healing are supported through balanced warmth and medical compression.
- Great comfort with exceptional breathability through quick drying perforated performance material.
- Neoprene-free, made with COOLMAX® AIR technology.
- Supports ease of application with wrap-around style for sore knees.
- Adjust the level of support for comfort no matter the activity.
- Helps to relieve patella pain. Knee cap pressure is reduced by open design.
- Universal sizing.
- Can be worn left or right.

Fields of application:

- Painful knee injuries and prevention
- Slight strains, sprains and contusions
- Minor meniscal damages
- Joint swelling



Ref / BNR	Size	Measurements	Color
75593-10	Universal	11½" - 16½"	Black



Actimove® Knee Stabilizer

Adjustable Horseshoe and Stays

Sleeve design with adjustable horseshoe for improved patellar tracking

- Enjoy sports, as pain relief and healing are supported through balanced warmth and medical compression.
- Great comfort with exceptional breathability through quick drying perforated performance material.
- Neoprene-free, made with COOLMAX® AIR technology.
- Manage patellar pain syndrome with an adjustable horseshoe.
- Added knee support from medial and lateral spiral stays.
- Stays in place with improved fit through elastic hook and loop support strap.
- Easy application with convenient finger-loops.
- Improved patellar tracking through increased pressure by adjusting the horseshoe either inferiorly, superiorly, medially or laterally.
- Seven sizes available.
- Can be worn left or right.

Fields of application:

- Patellar pain syndrome
- Patellar tracking and subluxation
- Patellar instability
- Chondromalacia patella
- Patellar tendonitis



	Ref / BNR	Size	Measurements	Color
	7245300	XS	12" - 14"	Black
	7245301	S	14" - 16"	Black
	7245302	M	16" - 18"	Black
	7245303	L	18" - 20"	Black
	7245304	XL	20" - 22"	Black
	7245305	XXL	22" - 24"	Black
	7245306	XXXL	24" - 26"	Black





Actimove® Knee Brace

Wrap Around, Simple Hinges, Condyle Pads

Pain-free application through front wrap closure system, simple hinges for extra stability

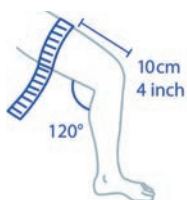
- Pain relief and healing are supported through balanced warmth and medical compression.
- Great comfort with exceptional breathability through quick drying perforated performance material.
- Neoprene-free, made with COOLMAX® AIR technology.
- Manage knee pain from soft tissue, ligament injuries or osteoarthritis through extra stability from medial and lateral hinges.
- Supports pain-free application through front wrap closure system.
- Stays in place with improved fit through elastic hook and loop support strap.
- Seven sizes available.
- Can be worn left or right.

Fields of application:

- Light to moderate ACL, LCL, MCL, PCL sprains and tears
- Medial / lateral meniscal tears
- Osteoarthritis (OA)
- Knee joint instability



Removable Condyle Pads



Ref / BNR	Size	Measurements	Color
7550010	XS	12" - 14"	Black
7550011	S	14" - 16"	Black
7550012	M	16" - 18"	Black
7550013	L	18" - 20"	Black
7550014	XL	20" - 22"	Black
7550015	XXL	22" - 24"	Black
7550016	XXXL	24" - 26"	Black

Actimove® Knee Brace

Wrap Around, Polycentric Hinges, Condyle Pads

Pain-free application through front wrap closure system, polycentric hinges for improved gait

- Pain relief and healing are supported through balanced warmth and medical compression.
- Great comfort with exceptional breathability through quick drying perforated performance material.
- Neoprene-free, made with COOLMAX® AIR technology.
- Manage knee pain from soft tissue, ligament injuries or osteoarthritis through extra stability from medial and lateral hinges.
- Supports pain-free application through front wrap closure system.
- Stays in place with improved fit through elastic hook and loop support straps.
- Seven sizes available.
- Can be worn left or right.

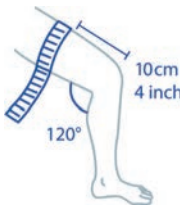
Fields of application:

- Light to moderate ACL, LCL, MCL, PCL sprains and tears
- Medial / lateral meniscal tears
- Osteoarthritis (OA)
- Knee joint instability



Removable Condyle Pads



	Ref / BNR	Size	Measurements	Color
	7311800	XS	12" - 14"	Black
	7311801	S	14" - 16"	Black
	7311802	M	16" - 18"	Black
	7311803	L	18" - 20"	Black
	7311804	XL	20" - 22"	Black
	7311805	XXL	22" - 24"	Black
	7311806	XXXL	24" - 26"	Black

Actimove® Knee Brace

Adjustable Horseshoe, Simple Hinges, Condyle Pads

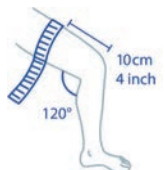
Hinged knee sleeve for extra stability, adjustable horseshoe for improved patellar tracking

- Pain relief and healing are supported through balanced warmth and medical compression.
- Great comfort with exceptional breathability through quick drying perforated performance material.
- Neoprene-free, made with COOLMAX® AIR technology.
- Manage knee pain from soft tissue and ligament injuries through extra stability with medial and lateral hinges.
- Optional patellar support with an adjustable horseshoe.
- Stays in place with improved fit through elastic hook and loop support strap.
- Easy application with convenient finger-loops.
- Improved patellar tracking through increased pressure by adjusting the horseshoe either inferiorly, superiorly, medially or laterally.
- Seven sizes available.
- Can be worn left or right.

Fields of application:

- ACL, LCL, MCL, PCL sprains and tears
- Medial/lateral meniscal tears
- Patellar instability
- Patellar tendonitis
- Chondromalacia patella
- Osgood-Schlatter disease



	Ref / BNR	Size	Measurements	Color
	7568750	XS	12" - 14"	Black
	7568751	S	14" - 16"	Black
	7568752	M	16" - 18"	Black
	7568753	L	18" - 20"	Black
	7568754	XL	20" - 22"	Black
	7568755	XXL	22" - 24"	Black
	7568756	XXXL	24" - 26"	Black

Actimove® PF Knee Brace – Lateral Support

Simple Hinges, Condyle Pads, J-shaped Buttress

Sleeve design with special lateral patellar femoral support, simple hinges for extra stability

- Pain relief and healing are supported through balanced warmth and medical compression.
- Great comfort with exceptional breathability through quick drying perforated performance material.
- Neoprene-free, made with COOLMAX® AIR technology.
- Lateral patellar support and stabilization using special angled straps combined with the “J” shaped buttress.
- Supports side-to-side knee stability through medial and lateral hinges.
- Easy application with convenient finger-loops.
- Seven sizes available.

Fields of application:

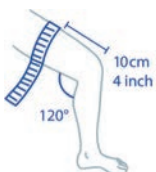
- Chondromalacia patella
- Lateral pressure syndrome pain
- Patellar instability
- Lateral dislocation
- Lateral patellofemoral mal alignment



J-Shaped Buttress



	Ref / BNR	Side	Ref / BNR	Side	Size	Measurements	Color
	7559930	Right	7559937	Left	XS	12" – 14"	Black
	7559931	Right	7559938	Left	S	14" – 16"	Black
	7559932	Right	7559939	Left	M	16" – 18"	Black
	7559933	Right	7559940	Left	L	18" – 20"	Black
	7559934	Right	7559941	Left	XL	20" – 22"	Black
	7559935	Right	7559942	Left	XXL	22" – 24"	Black
	7559943	Right	7559936	Left	XXXL	24" – 26"	Black



Actimove® Ankle Support

Slim fit sleeve for every shoe

- Enjoy sports, as pain relief and healing are supported through balanced warmth and medical compression.
- Great comfort with exceptional breathability through quick drying perforated performance material.
- Neoprene-free, made with COOLMAX® AIR technology.
- Fast & easy slip on style.
- Comfortable slim-fit with flat seams for every shoe.
- Four sizes available.
- Can be worn left or right.
- Available in black or navy.

Fields of application:

- Painful ankle injuries & prevention
- Mild sprains
- Weak ankles
- Swelling and tenderness



Perforated Performance Material



	Ref / BNR	Color	Ref / BNR	Color	Size	Measurements
	7560612	Navy	7560616	Black	S	8" - 9½"
	7560613	Navy	7560617	Black	M	9½" - 11"
	7560614	Navy	7560618	Black	L	11" - 12½"
	7560615	Navy	7560619	Black	XL	12½" - 14½"

Actimove® Ankle Support

Adjustable

Stays in place through conforming heel loop, adjustable for stability

- Enjoy sports, as pain relief and healing are supported through balanced warmth and medical compression.
- Comfort and good breathability through neoprene-free performance material.
- Stays in place with conforming elastic heel loop.
- Adjust the level of support, for comfort no matter the activity.
- Universal sizing.
- Can be worn left or right.

Fields of application:

- Painful ankle injuries & prevention
- Mild sprains
- Weak ankles
- Swelling and tenderness



Elastic Heel Loop



	Ref / BNR	Size	Measurements	Color
	7562010	Universal	8" - 10½"	Black



Actimove® Ankle Support

Elastic Wrap Around

Ultra slim fit, extra thin, yet durable, adjustable for stability

- Enjoy sports, as pain relief and healing are supported through balanced warmth and medical compression.
- Increased comfort and good breathability with ventilated elastic strap design.
- Ultra slim fit due to extra thin but durable material.
- Adjust the level of support for comfort, no matter the activity.
- Three sizes available.
- Can be worn left or right.
- Contains latex.
- Available in black.


Fields of application:

- Painful ankle injuries & prevention
- Mild sprains
- Weak ankles
- Swelling and tenderness



Caution: This product contains natural rubber latex which may cause allergic reactions.



	Ref / BNR	Size	Measurements	Color
	7341480	S	7" - 8"	Black
	7341481	M	8" - 9"	Black
	7341482	L	9" - 10"	Black





Actimove® Ankle Stabilizer

Criss-Cross Straps

Simulating sports taping, increased stability for ankle and arch of foot

- Enjoy sports, as pain relief and healing are supported through balanced warmth and medical compression.
- Great comfort with exceptional breathability through quick drying performance material.
- Neoprene-free, made with COOLMAX® AIR technology.
- Increased stability around the ankle and arch of foot with criss-cross straps simulating sports taping.
- Stays in place during athletic activity with extra support from circular strap.
- Universal sizing.
- Can be worn left or right.

Fields of application:

- Mild and moderate ankle sprains
- Sports injuries
- Helps to avoid re-injuries and chronic ankle instabilities



Criss-Cross Straps



Ref / BNR	Size	Measurements	Color
7561130	Universal	8" - 10½"	Black



Actimove® Back Support, 4 Stays

Adjustable Double Layer Compression

Advanced support and pain relief with comfort

- Pain relief and healing are supported through balanced warmth and medical compression.
- Great comfort with exceptional breathability through quick drying perforated performance material.
- Neoprene-free, made with COOLMAX® AIR technology.
- Advanced support and pain relief from adjustable, circumferential double-layer compression.
- Comfortable to wear, even when sitting, as flexible stays maintain positioning.
- Five sizes available.

Fields of application:

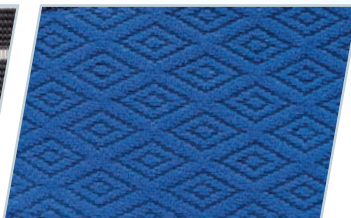
- Acute and chronic back pain
- Lumbar strains
- Muscular insufficiency
- Provides support during sports



Adjustable Elastic Band



3D Diamond Lining with COOLMAX® AIR



	Ref / BNR	Size	Measurements	Color
	7554120	S	28" - 33"	Black
	7554121	M	33" - 37"	Black
	7554122	L	37" - 41"	Black
	7554123	XL	41" - 45"	Black
	7554124	XXL	45" - 49"	Black



Actimove® Back Stabilizer

Rigid Panel with Pressure Pads
 SMART Easy-Closing-Pulley-System

Easy to apply and adjust, relieving massage for lower back pain

- Pain relief and healing are supported through balanced warmth and medical compression.
- Comfort and good breathability through neoprene-free perforated performance material.
- Easy and simple to apply and adjust the compression with just one thumb using the SMART Easy-Closing-Pulley-System.
- Additional strength and stability for the lumbar region through rigid back panel.
- Relieving massage effect through prominent, removable pressure pads.
- Four sizes available.

Fields of application:

- Acute and chronic lower back pain
- Degenerative back problems (e.g., spondylosis)
- Lumbar instabilities (e.g., muscular insufficiencies)
- Post-operative care and rehabilitation



Removable Pressure Pads



	Ref / BNR	Size	Measurements	Color
	7553510	XS/S	29" - 35"	Black
	7553511	S/M	35" - 41"	Black
	7553512	L/XL	41" - 45"	Black
	7553513	2XL/3XL	45" - 49"	Black

Actimove® Elbow Strap

Hot/Cold Pack

Extra pain relief and secure fit for tennis and golfer's elbow

- Enjoy sports, as pain relief and healing are supported through balanced warmth and medical compression.
- Comfort and good breathability through neoprene-free performance material.
- Extra pain relief supported by a removable therapeutic hot/cold pack.
- Silicone dot lining for secure fit.
- Universal sizing.
- Can be worn left or right.

Fields of application:

- Tennis, golfer's elbow (epicondylitis)



Hot/Cold Pack

Silicone Dot Lining



Ref / BNR	Size	Measurements	Color
7574230	Universal	11" - 15¾"	Black



Actimove® Elbow Support

Adjustable

Slip-on design with easy application and adjustment

- Enjoy sports, as pain relief and healing are supported through balanced warmth and medical compression.
- Comfort and good breathability through neoprene-free performance material.
- Quick and easy to fit with slip-on design and individually adjustable straps.
- Universal sizing.
- Can be worn left or right.

Fields of application:

- Painful elbow injuries & prevention



Slip-On Design



Ref / BNR	Size	Measurements	Color
7561730	Universal	7½" - 14½"	Black



Actimove® Shoulder Support

Extra Pocket for Optional Hot/Cold Pack

Adjustable support and protection for shoulder injuries and painful conditions

- Pain relief and healing are supported through balanced warmth and medical compression.
- Comfort and good breathability through neoprene-free performance material.
- Extra pain relief when optional hot/cold therapy pack is placed in build-in pocket.
- Supports and protects the shoulder while allowing flexibility.
- Adjustable chest and arm closure for a custom fit.
- Three sizes available.
- Can be worn left or right .


Fields of application:

- Slight shoulder instabilities
- Degenerative shoulder conditions
- Tendomyopathies
- Shoulder sprains / strains
- After arthroscopy



Pocket for Optional Hot/Cold Pack



	Ref / BNR	Size	Measurements	Color
	7557310	S	31½" – 41½"	Black
	7557311	M	41½" – 51"	Black
	7557312	L	51" – 61"	Black

Actimove® Thigh Support

Adjustable

Adjustable, accommodating fit that stays in place for strains and contusions

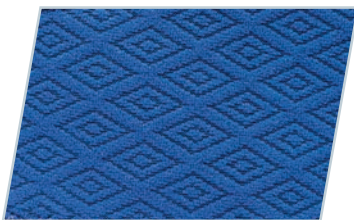
- Enjoy sports, as pain relief and healing are supported through balanced warmth and medical compression.
- Great comfort with exceptional breathability through quick drying performance material.
- Neoprene-free, made with COOLMAX® AIR technology.
- Feel secure as thigh is protected by an accommodating fit that stays in place.
- Adjust the level of support for comfort, no matter the activity.
- Universal sizing.
- Can be worn left or right.

Fields of application:

- For slight to moderate strains & contusions of the quadriceps or hamstring muscles



3D Diamond Lining with COOLMAX® AIR



Ref / BNR	Size	Measurements	Color
7560202	Universal	17¾" - 31½"	Black



Actimove®

EVERYDAY SUPPORTS

With age, patients frequently suffer from chronic degenerative joint diseases, impacting how they are able to move. They are looking for stability to support their mobility.

Actimove Everyday Supports provide medical compression that helps to reduce edema and aids with pain relief. Its enduring comfort is combined in a range of reliable and durable supports.

- **Validated compression** properties provide support and stability which helps to reduce swelling and manage pain relief.
- The **unique helix design** is inspired by physiological taping and the supports are anatomically shaped for stability.
- Made from **soft, latex-free** yarns, Actimove Everyday Supports have special comfort zones for sensitive areas.



Actimove® Wrist Stabilizer Carpal

Pre-shaped Metal Stay

Anatomical shape for correct positioning, full finger movement and hand dexterity

- Pain relief and healing are supported through balanced warmth and medical compression.
- Great comfort with exceptional breathability through quick drying perforated performance material.
- Neoprene-free, made with COOLMAX® AIR technology.
- Helps to manage pain by stabilizing wrist with anatomically shaped stay for correct positioning.
- Provides relief as hand can rest on palmar pad supported by rigid, angled stay.
- Full finger movement and hand dexterity from unique open design.
- Universal sizing.
- Can be worn left or right.

Fields of application:

- Symptomatic relief of carpal tunnel syndrome, e.g., while using a computer



Open Design for Dexterity



	Ref / BNR	Size	Measurements	Color
	7571420	Universal	5½" - 8"	Black



Actimove® Mild Knee Support


Lightweight design, easy to apply

- Mild support and easy application due to lightweight design.
- Knitted design supports good fit while maintaining flexibility.
- Soft yarns, latex-free for comfort.
- Four sizes available.
- Can be worn left or right.

Fields of application:

- Slightly swollen and aching knees



	Ref / BNR	Size	Measurements	Color
	7558020	S	11¾" - 15"	White
	7558021	M	15" - 18"	White
	7558022	L	18" - 20¾"	White
	7558023	XL	20¾" - 24"	White

Actimove® Knee Support

Closed Patella

Firm compression, reliable, durable support for everyday mobility, functional helix design

- Firm compression to help manage pain from knee conditions.
- Reliable, durable support for everyday mobility.
- Seamless anatomical shape supported by a patterned helix design for a good fit.
- Soft, smooth Motion-Comfort-Zone in the popliteal area.
- Reinforced edges for long lasting wear.
- Soft, latex-free and cotton-free yarns for enduring comfort.
- Four sizes available.
- Can be worn left or right.

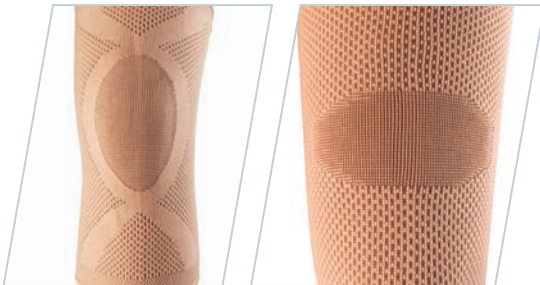
Fields of application:


- Degenerative knee conditions
- Overuse or repetitive use syndromes
- Chronic knee pain



Helix Design

Motion-Comfort-Zone



	Ref / BNR	Size	Measurements	Color
	7557536	S	12¼" - 14¼"	Beige
	7557537	M	14¼" - 16¼"	Beige
	7557538	L	16¼" - 18"	Beige
	7557539	XL	18" - 20½"	Beige

Actimove® Knee Support

Closed Patella, 2 Stays

Firm compression, added stability, durable support, functional helix design

- Firm compression to help manage pain from knee conditions.
- Added stability through two spiral stays.
- Reliable, durable support for everyday mobility.
- Anatomical shape supported by a patterned helix design for a good fit.
- Soft, smooth Motion-Comfort-Zone in the popliteal area.
- Reinforced edges for long lasting wear.
- Soft, latex-free and cotton-free yarns for enduring comfort.
- Four sizes available.
- Can be worn left or right.

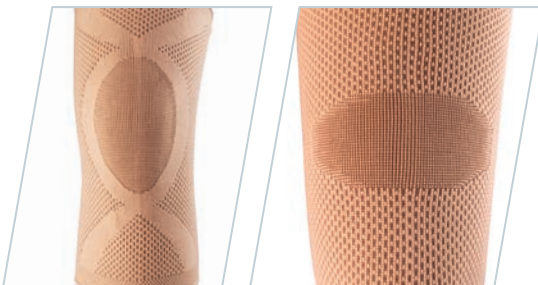
Fields of application:


- Degenerative knee conditions
- Overuse or repetitive use syndromes
- Chronic knee pain



Helix Design

Motion-Comfort-Zone



	Ref / BNR	Size	Measurements	Color
	75575-28	S	12¼" - 14¼"	Beige
	75575-29	M	14 ¼" - 16¼"	Beige
	75575-30	L	16¼" - 18"	Beige
	75575-31	XL	18" - 20½"	Beige

Actimove® Knee Support

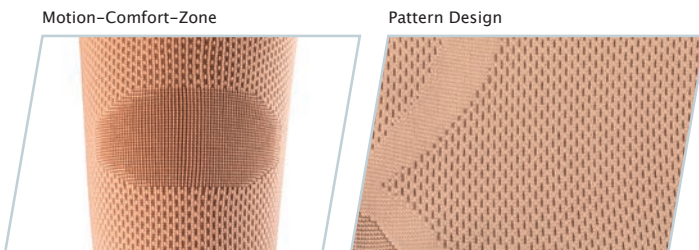
Open Patella, 4 Stays

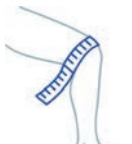
Firm compression, extra stability, reduced patella pressure, durable support, functional helix design

- Firm compression to help manage pain from knee conditions.
- Helps to relieve patella pain. Knee cap pressure is reduced by open design.
- Added stability through four spiral stays.
- Reliable, durable support for everyday mobility.
- Anatomical shape supported by a patterned helix design for a good fit.
- Soft, smooth Motion-Comfort-Zone in the popliteal area.
- Reinforced edges for long lasting wear.
- Soft, latex-free and cotton-free yarns for enduring comfort.
- Four sizes available.
- Can be worn left or right.

Fields of application:

- Degenerative knee conditions
- Overuse or repetitive use syndromes
- Chronic knee pain



	Ref / BNR	Size	Measurements	Color
	7557520	S	12¼" - 14¼"	Beige
	7557521	M	14¼" - 16¼"	Beige
	7557522	L	16¼" - 18"	Beige
	7557523	XL	18" - 20½"	Beige



Actimove® Mild Ankle Support

Lightweight design, easy to apply

- Mild support and easy application due to lightweight open heel design.
- Knitted design supports good fit while maintaining flexibility.
- Soft yarns, latex-free for comfort.
- Four sizes available.
- Can be worn left or right.

Fields of application:

- Slightly swollen and aching ankles.



Open Heel Design



	Ref / BNR	Size	Measurements	Color
	7560320	S	7¾" - 9½"	White
	7560321	M	9½" - 11"	White
	7560322	L	11" - 12½"	White
	7560323	XL	12½" - 14½"	White

Actimove® Ankle Support

Firm compression, reliable, durable support for everyday mobility

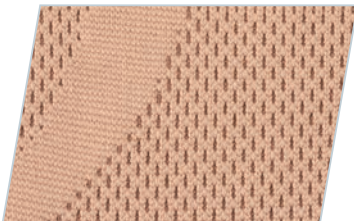
- Firm compression to help manage pain from ankle conditions.
- Reliable, durable support for everyday mobility.
- Seamless anatomical shape supported by a patterned helix design for a good fit.
- Reinforced edges for long lasting wear.
- Soft, smooth Motion-Comfort-Zone in the instep.
- Soft, latex-free and cotton-free yarns for enduring comfort.
- Four sizes available.
- Can be worn left or right.


Fields of application:

- Degenerative ankle conditions
- Overuse or repetitive use syndromes
- Chronic ankle pain



Pattern Design



	Ref / BNR	Size	Measurements	Color
	7560820	S	7" - 8¼"	Beige
	7560821	M	8¼" - 9½"	Beige
	7560822	L	9½" - 10¾"	Beige
	7560823	XL	10¾" - 11¾"	Beige

Actimove® Back Support

High-Density Foam Panel

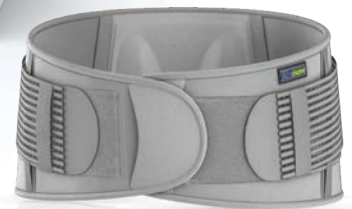
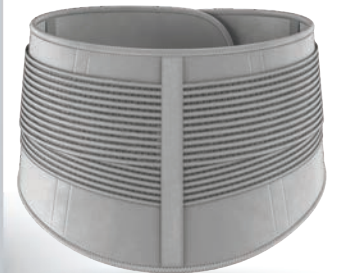
Adjustable Double Layer Compression

Relieving massage effect, stability for the lumbar region

- Pain relief and healing are supported through balanced warmth and medical compression.
- Comfort and good breathability through neoprene-free perforated performance material.
- Provides strength and stability for the lumbar region incorporating a tapered high-density foam panel.
- Relieving massage effect through prominent pressure pads.
- Easy to apply and adjustable compression, thanks to the finger pockets and loops.
- Two sizes available.

Fields of application:

- Acute and chronic lower back pain
- Degenerative back problems (e.g. spondylosis)
- Lumbar instabilities (e.g. muscular insufficiencies)
- Post-operative care and rehabilitation




High-Density Foam Panel



Finger Loops and Pockets



	Ref / BNR	Size	Measurements	Color
	7345030	S/M	29" – 37"	Silver
	7345031	L/XL	37" – 45"	Silver

Actimove® Mild Elbow Support


Lightweight design, easy to apply

- Mild support and easy application due to lightweight design.
- Knitted design supports good fit while maintaining flexibility.
- Soft yarns, latex-free for comfort.
- Four sizes available.
- Can be worn left or right.

Fields of application:

- Slightly swollen and aching elbows



	Ref / BNR	Size	Measurements	Color
	7561620	S	8¼" - 9¾"	White
	7561621	M	9¾" - 11½"	White
	7561622	L	11½" - 13"	White
	7561623	XL	13" - 14½"	White

Actimove® Elbow Support


Firm compression, reliable, durable support for everyday mobility

- Firm compression to help manage pain from elbow conditions.
- Reliable, durable support for everyday mobility.
- Seamless anatomical shape supported by a patterned helix design for a good fit.
- Reinforced edges for long lasting wear.
- Soft, latex-free and cotton-free yarns for enduring comfort.
- Soft, smooth Motion-Comfort-Zone in the elbow crease.
- Four sizes available.
- Can be worn left or right.

Fields of application:

- Degenerative elbow conditions
- Overuse or repetitive use syndromes
- Chronic elbow pain



	Ref / BNR	Size	Measurements	Color
	7561430	S	7¾" - 9"	Beige
	7561431	M	9" - 10¼"	Beige
	7561432	L	10¼" - 11½"	Beige
	7561433	XL	11½" - 12½"	Beige

Actimove® Elbow Support

Pressure Pads and Strap

Firm compression, adjustable pressure, durable support for added pain relief

- Firm compression to help manage pain from elbow conditions.
- Two shaped pressure pads create a massage effect for added pain relief.
- Targeted pain relief by adjusting pressure on forearm tendon by extra elastic strap.
- Reliable, durable support for everyday mobility.
- Seamless anatomical shape supported by a patterned helix design for a good fit.
- Soft, smooth Motion-Comfort-Zone in the elbow crease.
- Reinforced edges for long lasting wear.
- Soft, latex-free and cotton-free yarns for enduring comfort.
- Four sizes available.
- Can be worn left or right.


Fields of application:

- Degenerative elbow conditions
- Overuse or repetitive use syndromes
- Chronic elbow pain



Pressure Pads for Massage Effect



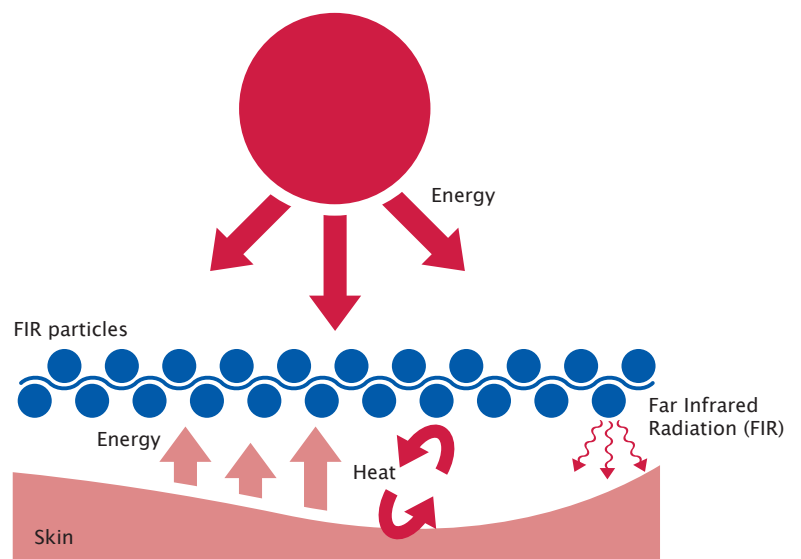
	Ref / BNR	Size	Measurements	Color
	7561438	S	7¾" – 9"	Beige
	7561439	M	9" – 10¼"	Beige
	7561440	L	10¼" – 11½"	Beige
	7561441	XL	11½" – 12½"	Beige

Actimove® ARTHRITIS CARE

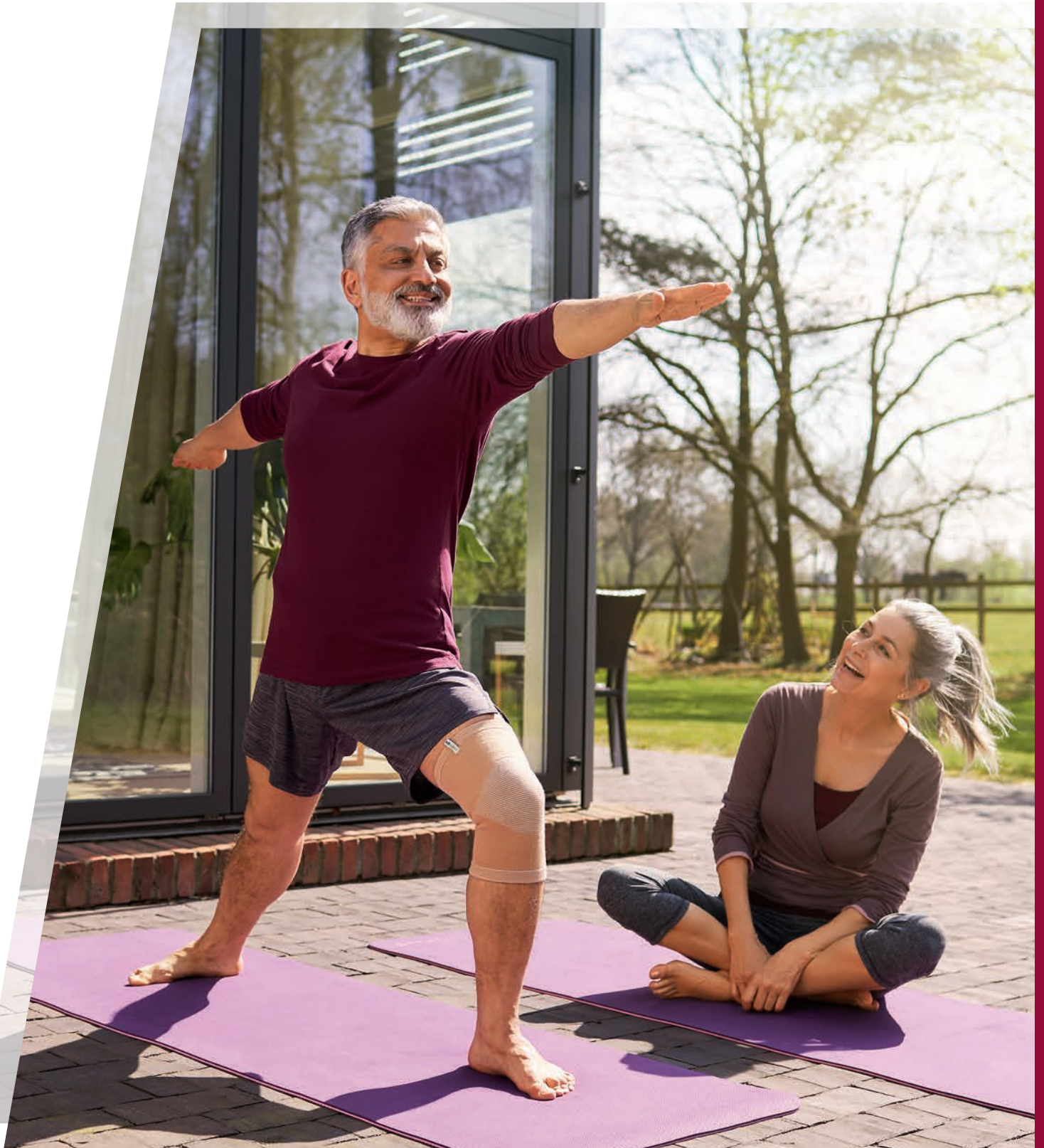
Elderly people suffering from chronic, painful osteoarthritis or rheumatoid arthritis are on a quest to find lasting pain relief¹ to help them live their daily lives.

Actimove Arthritis Care supports aid pain relief and increase joint mobility through soothing warmth and compression.

- Actimove Arthritis Care is made with **special ceramic yarns** which retain and reflect body heat.
- **Validated compression** properties provide support and stability, helping to reduce swelling, increase joint mobility and help to manage pain.
- The **skin friendly materials** are soft and comfortable and latex-free.



¹ Essity Internal Shopper Study



Actimove® Wrist Support


Soothing warmth for wrists from heat-retaining ceramic fibers

- Unique ceramic fibers retain and reflect body heat for soothing warmth to help relieve pain.
- Four-way stretch provides light, comfortable compression to reduce swelling for improved mobility.
- Therapeutic warming promotes circulation around the wrist for faster return to daily activities.
- Four sizes available.
- Can be worn left or right.

Fields of application:

- Painful arthritis of the wrist joint



	Ref / BNR	Size	Measurements	Color
	7577920	S	4¾" - 6"	Beige
	7577921	M	6" - 6¾"	Beige
	7577922	L	6¾" - 7½"	Beige
	7577923	XL	7½" - 8¼"	Beige

Actimove® Arthritis Gloves

Balanced warmth and medical compression, comfortable from outer seams

- Pain relief and healing are supported through balanced warmth and medical compression.
- Comfort and good breathability through neoprene-free performance material.
- Provides light compression to help reduce swelling for improved finger and hand mobility.
- Comfortable to wear because of premium soft material and outside seams.
- Four sizes available.
- Can be worn left or right.

Fields of application:

- Arthritis
- Aching fingers and hands
- Overuse or repetitive use syndromes



Outside Seams



Inside of Glove



	Ref / BNR	Size	Measurements	Color
	7578320	S	7" - 8"	Beige
	7578321	M	8" - 9¼"	Beige
	7578322	L	9¼" - 10½"	Beige
	7578323	XL	10½" - 11¾"	Beige





Actimove® Knee Support


Soothing warmth for knees from heat-retaining ceramic fibers

- Unique ceramic fibers retain and reflect body heat for soothing warmth to help relieve pain.
- Four-way stretch provides light, comfortable compression to reduce swelling for improved mobility.
- Therapeutic warming promotes circulation around the knee for faster return to daily activities.
- Four sizes available.
- Can be worn left or right.

Fields of application:

- Painful arthritis of the knee joint



	Ref / BNR	Size	Measurements	Color
	7578120	S	11" - 13"	Beige
	7578121	M	13" - 15"	Beige
	7578122	L	15" - 17"	Beige
	7578123	XL	17" - 19¼"	Beige
	75781-24	XXL	19¼" - 22"	Beige

Actimove® Ankle Support


Soothing warmth for ankles from heat-retaining ceramic fibers

- Unique ceramic fibers retain and reflect body heat for soothing warmth to help relieve pain.
- Four-way stretch provides light, comfortable compression to reduce swelling for improved mobility.
- Therapeutic warming promotes circulation around the ankle for faster return to daily activities.
- Four sizes available.
- Can be worn left or right.

Fields of application:

- Painful arthritis of the ankle joint



	Ref / BNR	Size	Measurements	Color
	7578020	S	6¼" - 8¼"	Beige
	7578021	M	8¼" - 10¼"	Beige
	7578022	L	10¼" - 12¼"	Beige
	7578023	XL	12¼" - 15¼"	Beige
	7578024	XXL	15¼" - 19¼"	Beige

Actimove® Elbow Support

Soothing warmth for elbows from heat-retaining ceramic fibers

- Unique ceramic fibers retain and reflect body heat for soothing warmth to help relieve pain.
- Four-way stretch provides light, comfortable compression to reduce swelling for improved mobility.
- Therapeutic warming promotes circulation around the elbow for faster return to daily activities.
- Four sizes available.
- Can be worn left or right.

Fields of application:

- Painful arthritis of the elbow joint



Ref / BNR	Size	Measurements	Color
7578221	S	7½" - 9"	Beige
7578222	M	9" - 10¼"	Beige
7578223	L	10¼" - 11½"	Beige
7578224	XL	11½" - 12¾"	Beige



Actimove® KIDS

Many children suffering from play or sport injuries may not like to wear supports, because most available neoprene-made options may be too hot.

Actimove Kids offers pain relief and healing through balanced warmth and medical compression. Kids will enjoy great comfort from skin-friendly materials offering excellent moisture management.

- Made with **COOLMAX® AIR¹** technology, Actimove Kids is engineered for quick drying and exceptional breathability to keep children cool and dry.
- The perforated **performance material** of Actimove Kids is neoprene-free, latex-free, and skin friendly.
- Furthermore, **validated compression** properties for support and stability help reduce swelling and manage pain relief.

¹ COOLMAX® AIR is a trademark of The LYCRA company



Actimove® Wrist Stabilizer

Removable Metal Stay, Left or Right

Anatomically shaped stay for secure stabilization, managing sprains and strains

- Pain relief and healing are supported through balanced warmth and medical compression.
- Comfort and good breathability through neoprene-free performance material.
- Stabilizes wrist through an anatomically shaped removable stay for left and right hand application.
- Quick and easy to fit with slip-on design and individually adjustable straps.
- Special comfort in a premium soft material and seamless design.
- Can be easily worn under clothing due to low profile.
- Pediatric sizes, ages 2 – 7.

Fields of application:

- Tendonitis
- Sprains, strains, soft tissue injuries
- Post-operative care
- After cast removal



	Ref / BNR	Size	Measurements	Color
	7572930	Pediatric	4½" – 5½"	Black



Actimove® Knee Support

Open Patella

Fast, easy and secure protection, relieving patella pain in minor knee injuries

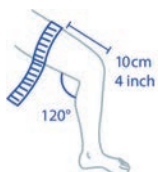
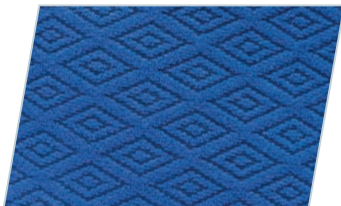
- Enjoy sports, as pain relief and healing are supported through balanced warmth and medical compression.
- Great comfort with exceptional breathability through quick drying perforated performance material.
- Neoprene-free, made with COOLMAX® AIR technology.
- Helps to relieve patella pain. Knee cap pressure is reduced by open design.
- Feel secure as knee is protected by a snug fit that stays in place.
- Fast & easy slip-on style.
- Two sizes, suitable for ages 6 – 7 and 8 – 12.

Fields of application:

- Painful knee injuries and prevention
- Slight strains, sprains and contusions
- Joint swelling



3D Diamond Lining with COOLMAX® AIR



Ref / BNR	Size	Measurements	Color
7558510	Pediatric	10" - 12"	Navy
7558511	Youth	12" - 14"	Navy

Actimove® Ankle Support

Slim fit sleeve for every shoe

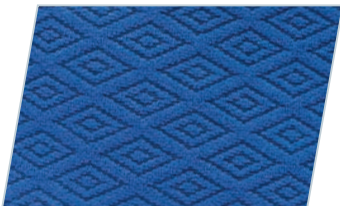
- Enjoy sports, as pain relief and healing are supported through balanced warmth and medical compression.
- Great comfort with exceptional breathability through quick drying perforated performance material.
- Neoprene-free, made with COOLMAX® AIR technology.
- Fast & easy slip-on style.
- Comfortable slim-fit with flat seams for every shoe.
- Two sizes, suitable for ages 6 -15. and 11 - 15.


Fields of application:

- Painful ankle injuries & prevention
- Mild sprains
- Weak ankles
- Swelling and tenderness



3D Diamond Lining with COOLMAX® AIR



	Ref / BNR	Size	Measurements	Color
	7560610	Pediatric	6½" - 7¼"	Navy
	7560611	Youth	7¼" - 8½"	Navy

Actimove® Elbow Support

Adjustable

Slip-on design with easy application and adjustment

- Enjoy sports, as pain relief and healing are supported through balanced warmth and medical compression.
- Comfort and good breathability through neoprene-free performance material.
- Quick and easy to fit with slip-on design and individually adjustable straps.
- Pediatric sizes, ages 5 – 7.

Fields of application:

- Painful elbow injuries & prevention



Slip-On Design



Ref / BNR	Size	Measurements	Color
7561731	Pediatric	6½" - 7½"	Black





Actimove[®],
an Essity brand



/BSNOrthoUSA

@BSNOrthoUSA

bsnmedical.us

BSN Medical Inc., an Essity company
5825 Carnegie Blvd., Charlotte, NC 28209-4633
Tel. (+1) 704 554 9933 Fax (+1) 800 835 4325
To order toll-free: Tel. (+1) 800 552 1157

63692 RN ©2019 BSN Medical Inc. REV 08/19