

Aqua Wave Swimform

Aqua Wave Swimform

Style 149
Sizes 1-14
Insurance PDAC registration #21392492
 HCPC Code L8030

- A transparent silicone form for water activities, with a unique natural shape
- Symmetrical form features raised waves on back that allow air and water to flow through, reducing the amount of suction.
- Offers a shallow to average fit.
- Packaged with a fashionable waterproof drawstring bag that is large enough to hold a wet swimsuit



Features: Bilateral Pockets, Wire Bra, Soft Bra, Cut & Sewn Cups, Cut & Sewn Foam Cups, Molded Cups, Molded Foam Cups, Comfort Straps, Side Bones, Pocket Pattern / Pocket Fabrics: 1, 2, 3, 4, 5, 6

Sell-out styles

The lingerie styles on this page are discontinuing during the year. Please check with your Account Manager or our customer service which styles and sizes are still available. Special prices for these styles are offered in our current price list.



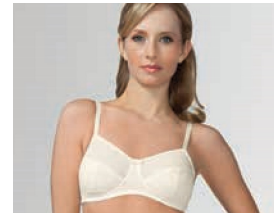
Angela wire-free ▲☺☹️^{1,5}
Style / Color 2766 (White)
Sizes 32-40 AA; 34-42 A,B; 34-40 C
Material 51% Polyester, 28% Cotton, 17% Spandex, 4% Nylon



Basic Seamless Panty
Style / Color 2464 (White); 2465 (Nude); 2532 (Black)
Sizes 6/8-18/20
Material 68% Nylon, 27% Spandex, 5% Cotton
 Side seam height: 3"



Lara Comfort wire-free ▲
Style / Color 2956 (Nude); 2955 (Black)
Sizes 32-44 B, C, D, DD
Material 85% Nylon, 15% Spandex



Lina wire-free ▲☺☹️^{1,2,3}
Style / Color 2438 (Ivory)
Sizes 32-42 A, B, C, D; 34-40 DD
Material 84% Nylon, 16% Spandex



Lina underwire ▲☺☹️^{2,3}
Style 2443 (Ivory)
Sizes 30-42 A, B, C, D; 34-40 DD
Material 84% Nylon, 16% Spandex



Lina Panty
Style 2445 (Ivory)
Sizes 6-18
Material 77% Nylon, 17% Spandex, 6% Cotton
 Side seam height: 3"



Lea underwire ▲☺☹️^{1,3}
Style / Color 2732 (Off-white); 2780 (Black)
Sizes 32-40 A, B, C; 34-38 D
Material 85% Polyester, 15% LYCRA®



Mona underwire ▲☺
Style / Color 2946 (Champagne); 2945 (Black)
Sizes 32-42 A; 34-42 B, C, D; 35-40 DD
Material 80% Nylon, 20% Spandex



Rachel wire-free
Style / Color 2184 (Nude)
Sizes 32-46 B, C, D, DDD
Material 78% Nylon, 22% Spandex

*measurements are indicated in size 8; height increases in larger sizes to maintain support