



587W

TO ORDER: Tel 800-347-5678 • Fax 800-726-0601 • www.grahamfield.com

Returns: Parts may not be returned without prior authorization from GF Health Products, Inc. Custom parts cannot be returned for credit. Please refer to GF Health Products, Inc. Terms and Conditions for further information.

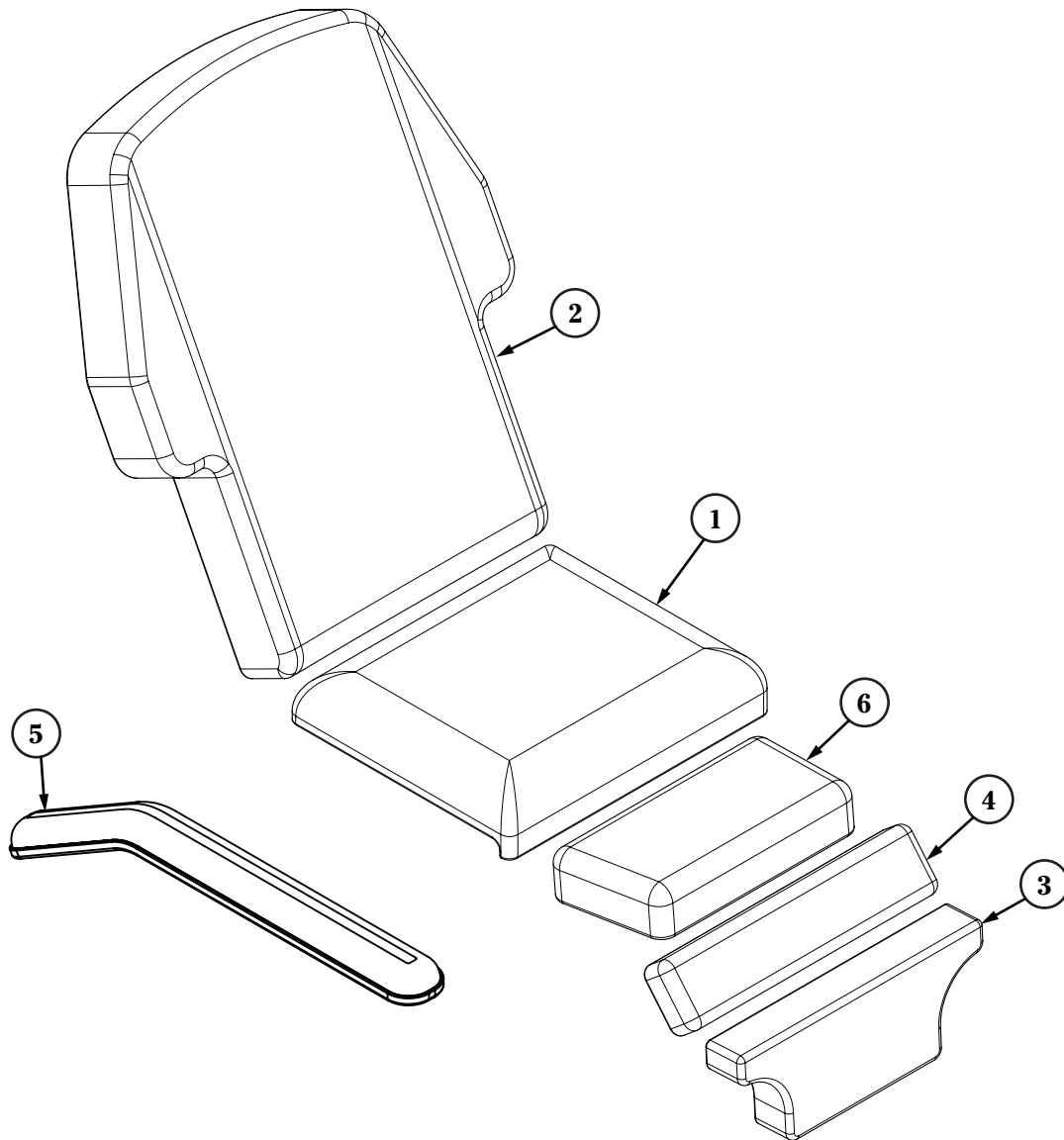
GF Health Products, Inc. is not responsible for typographical errors. Packaging, warranties, products and specifications are subject to change without notice. Lumex® and Graham-Field® are registered trademarks of GF Health Products, Inc.



© June 2009, GF Health Products, Inc., All Rights Reserved

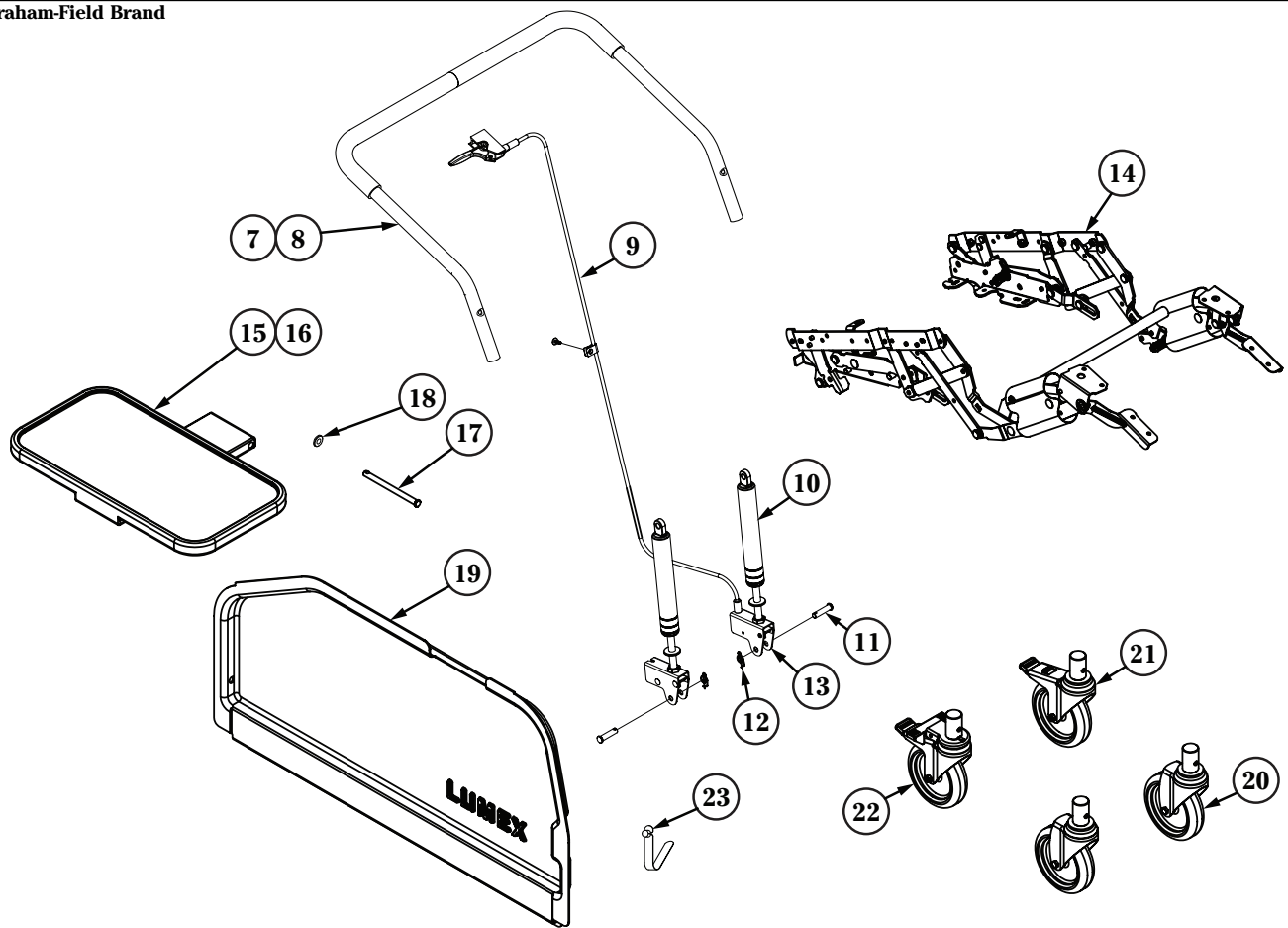
GF Health Products, Inc. • 2935 Northeast Parkway, Atlanta, GA 30360 • tel 800-347-5678 • fax 800-721-0602 • www.grahamfield.com

587W Recliner: Replacement Parts List



	ITEM NUMBER	DESCRIPTION	QTY/UNIT
1A	58731UXXX	Seat Upholstery	1 each
1B	58731UXXXFR	Seat Upholstery (CA-133 Fire Rated)	1 each
2A	58732UXXX	Back Upholstery	1 each
2B	58732UXXXFR	Back Upholstery (CA-133 Fire Rated)	1 each
3A	58733UXXX	Footrest Upholstery	1 each
3B	58733UXXXFR	Footrest Upholstery (CA-133 Fire Rated)	1 each
4A	58734UXXX	Legrest Upholstery	1 each
4B	58734UXXXFR	Legrest Upholstery (CA-133 Fire Rated)	1 each
5A	58735UXXX	Armrest Upholstery	1 each
5B	58735UXXXFR	Armrest Upholstery (CA-133 Fire Rated)	1 each
6A	58737UXXX	Ottoman Upholstery	1 each
6B	58737UXXXFR	Ottoman Upholstery (CA-133 Fire Rated)	1 each

587W Recliner: Replacement Parts List



	ITEM NUMBER	DESCRIPTION	QTY/UNIT
7	5873C400A	Push Handle with Grip	1 each
8	9205	Grip, Push Handle	1 each
9	5772A001	Cable Assembly	1 each
10	E1000001	Gas Spring	1 each
11	HP327220	Clevis Pin for Gas Spring	1 each
12	HP349160	Rue Ring Cotter Clip	1 each
13	5770A073	Lower Bracket for Gas Spring (Zinc Plated)	1 each
14	5610F200	Recliner Mechanism	1 each
15	5792A001G	Side Table Assembly	1 each
16	PP830008G	Side Table Top Only	1 each
17	HP340750	Clevis Pin, Side Table	1 each
18	HS347702	Washer, Side Table	1 each
19	5660A122FR	Side Panel	1 set
20	WC170016	Front Caster	1 each
21	WB170017	Left Rear Locking Caster	1 each
22	WB170034	Right Rear Directional Locking Caster	1 each
23	AP020004-8	Release Push Pin for Side Panel	8/package