

Airflo Diagnostic Guide

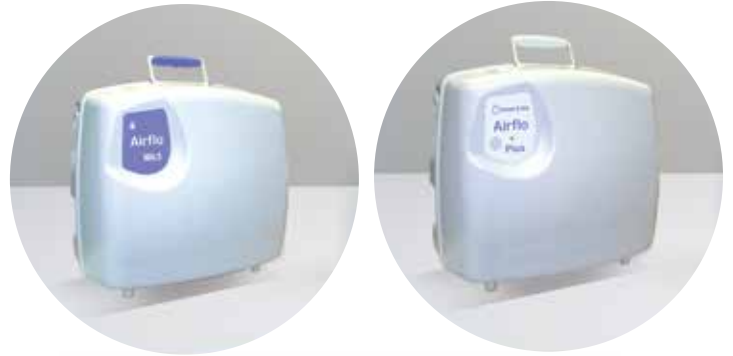


[Click here to view detailed product information and pricing.](#)

Call 800-397-5899 to order today!

This leaflet is designed to guide you through a simple diagnostic procedure if you have any problems with your Airflo compressor.

Depending on when your equipment was purchased, your Airflo model will vary. If you purchased pre June 2017, you are likely to be using an Airflo MK3 or and Airflo Plus.



Airflo Mk3 is used to inflate:

- Bathing Cushion
- Surfer Bather
- Handy Pillowlift
- Sit U Up Pillowlift
- Leglifter



Airflo Plus is used to inflate:

- ELK lifting cushion
- Camel lifting cushion



**Introduced in June 2017,
the new generation models,
Airflo 12 and Airflo 24 have
improved performance and
lifting power.**



Airflo 12 used to inflate:

- Bathing Cushion
- Surfer Bather
- Handy Pillowlift
- Sit U Up Pillowlift
- Leglifter

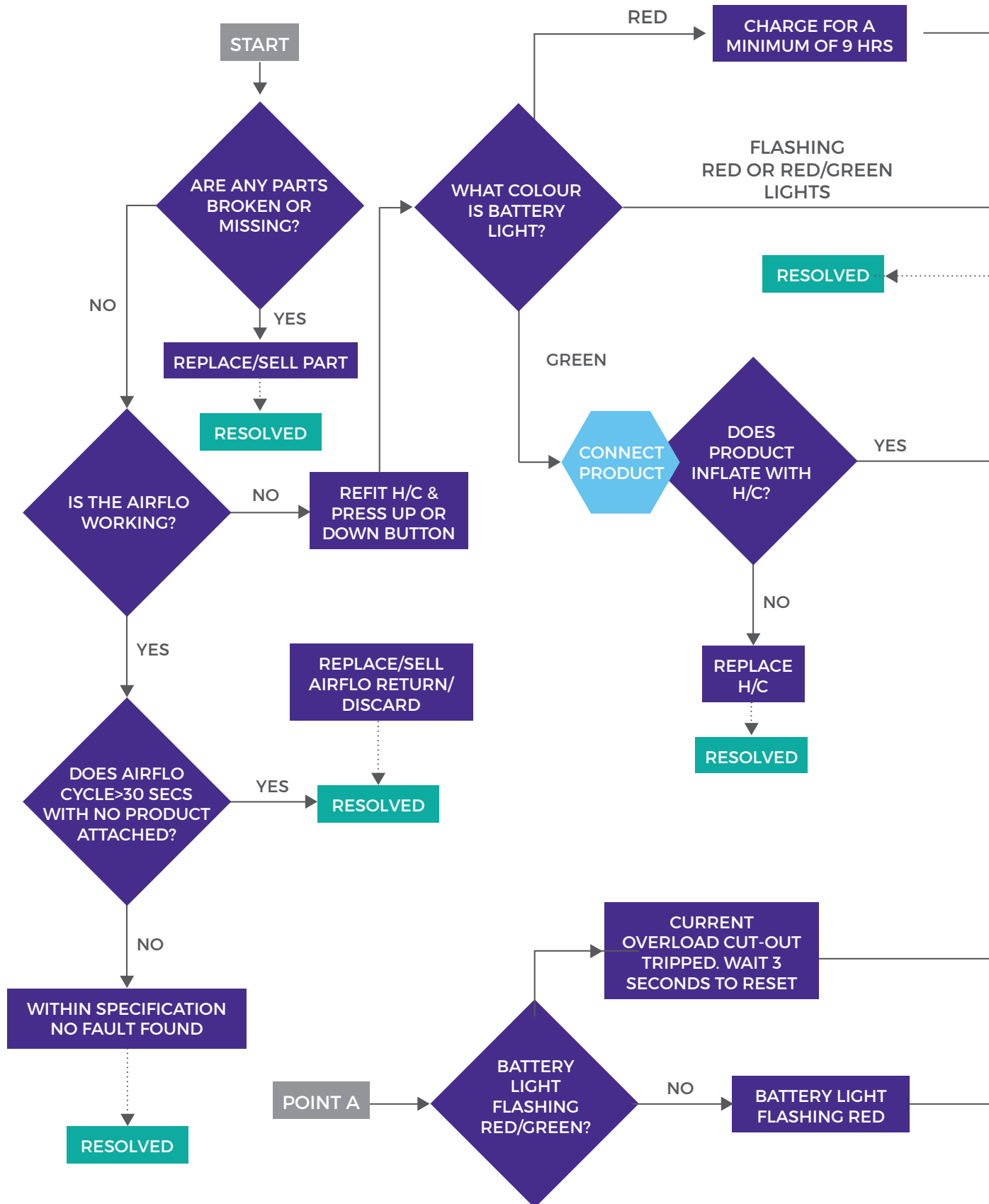


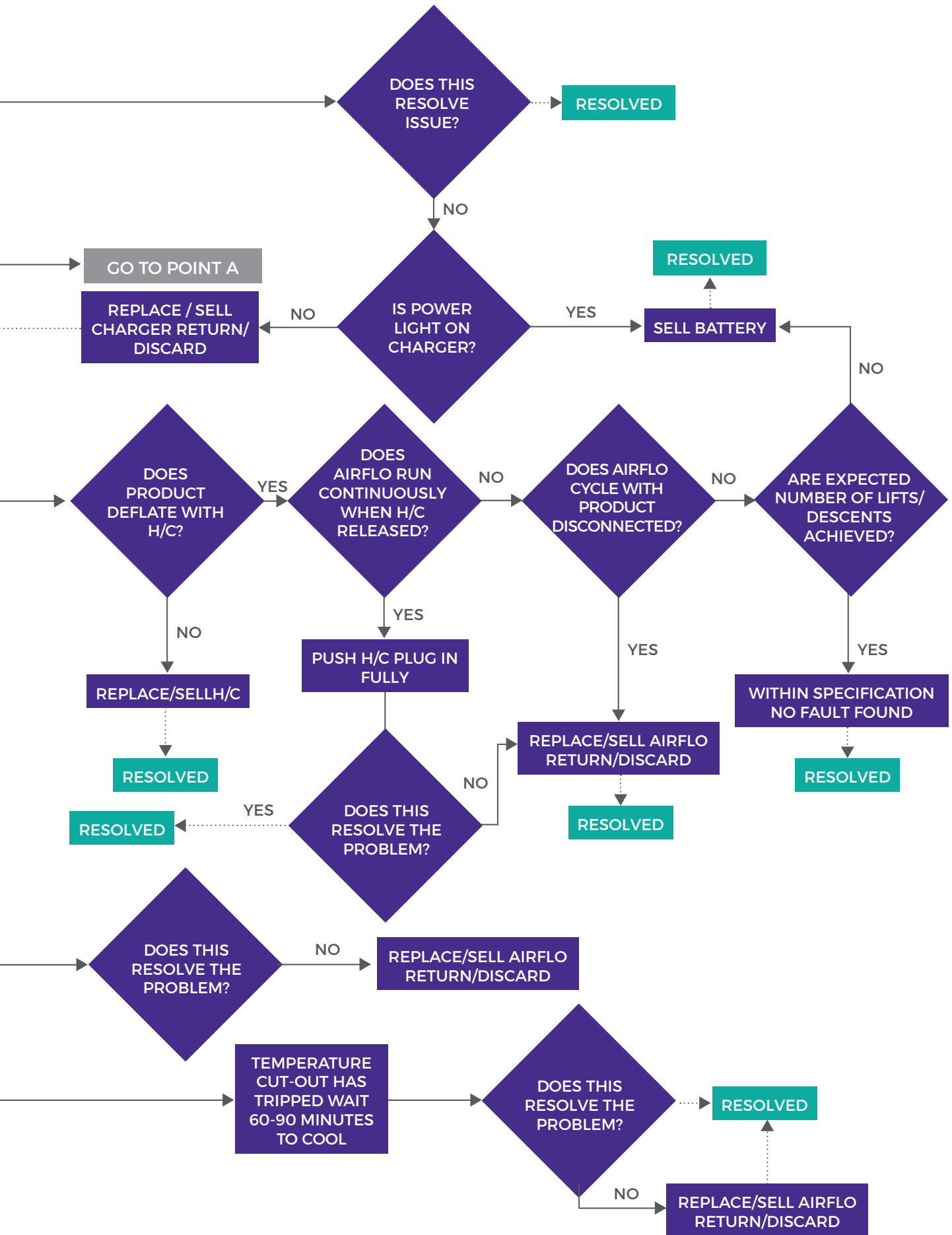
Airflo 24 is used to inflate:

- ELK lifting cushion
- Camel lifting cushion

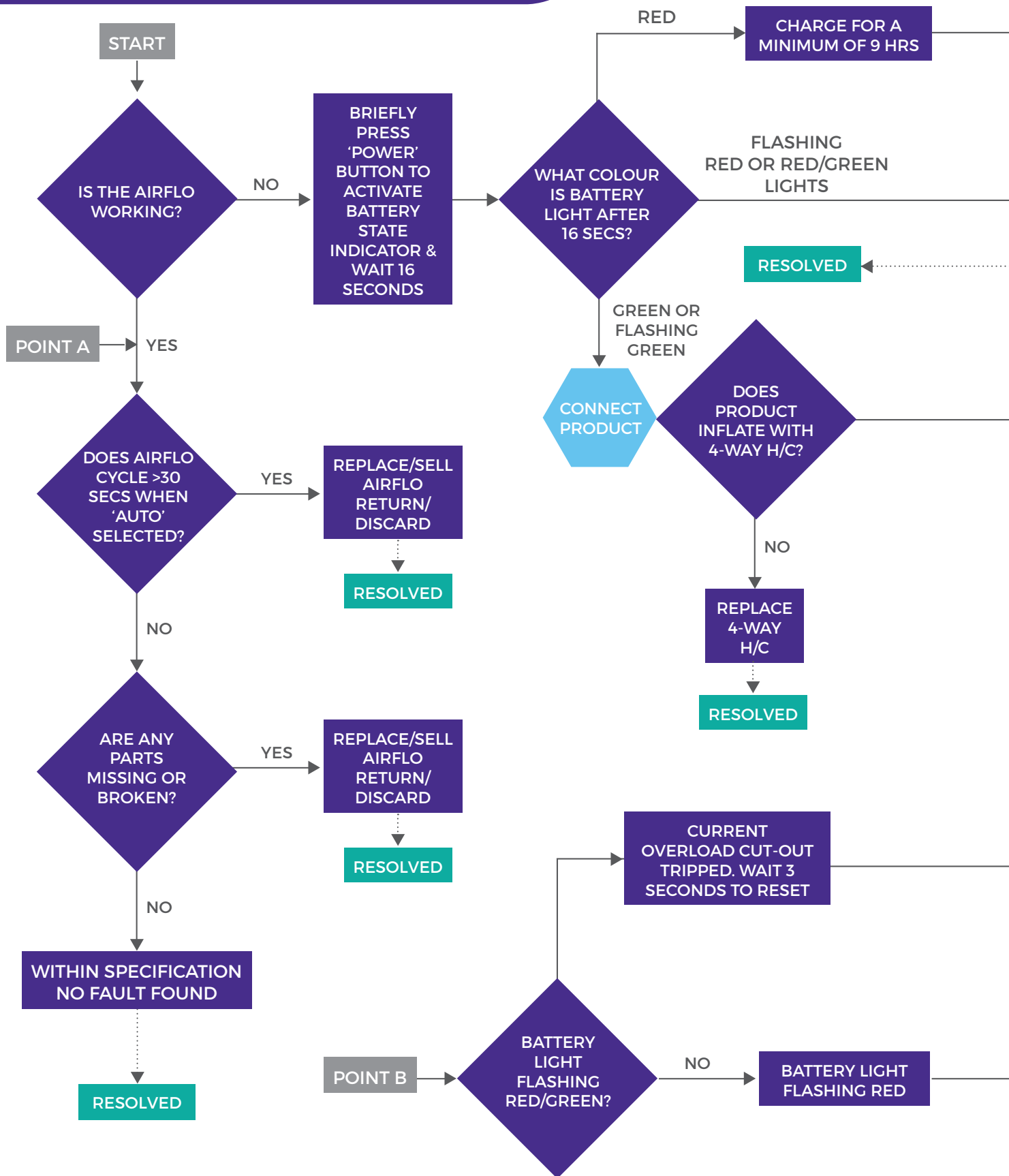


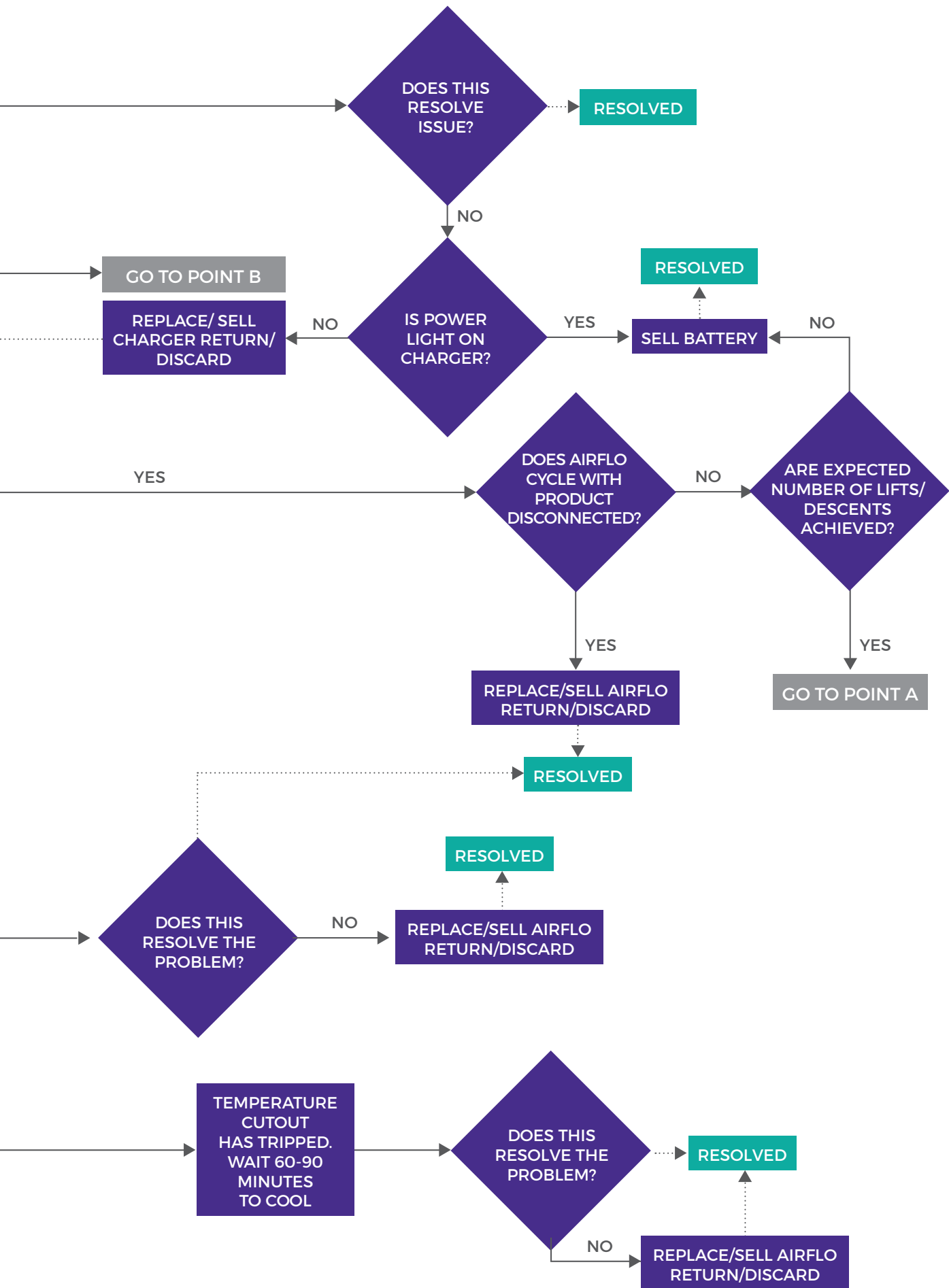
Airflo Mk3 Fault Finding Chart



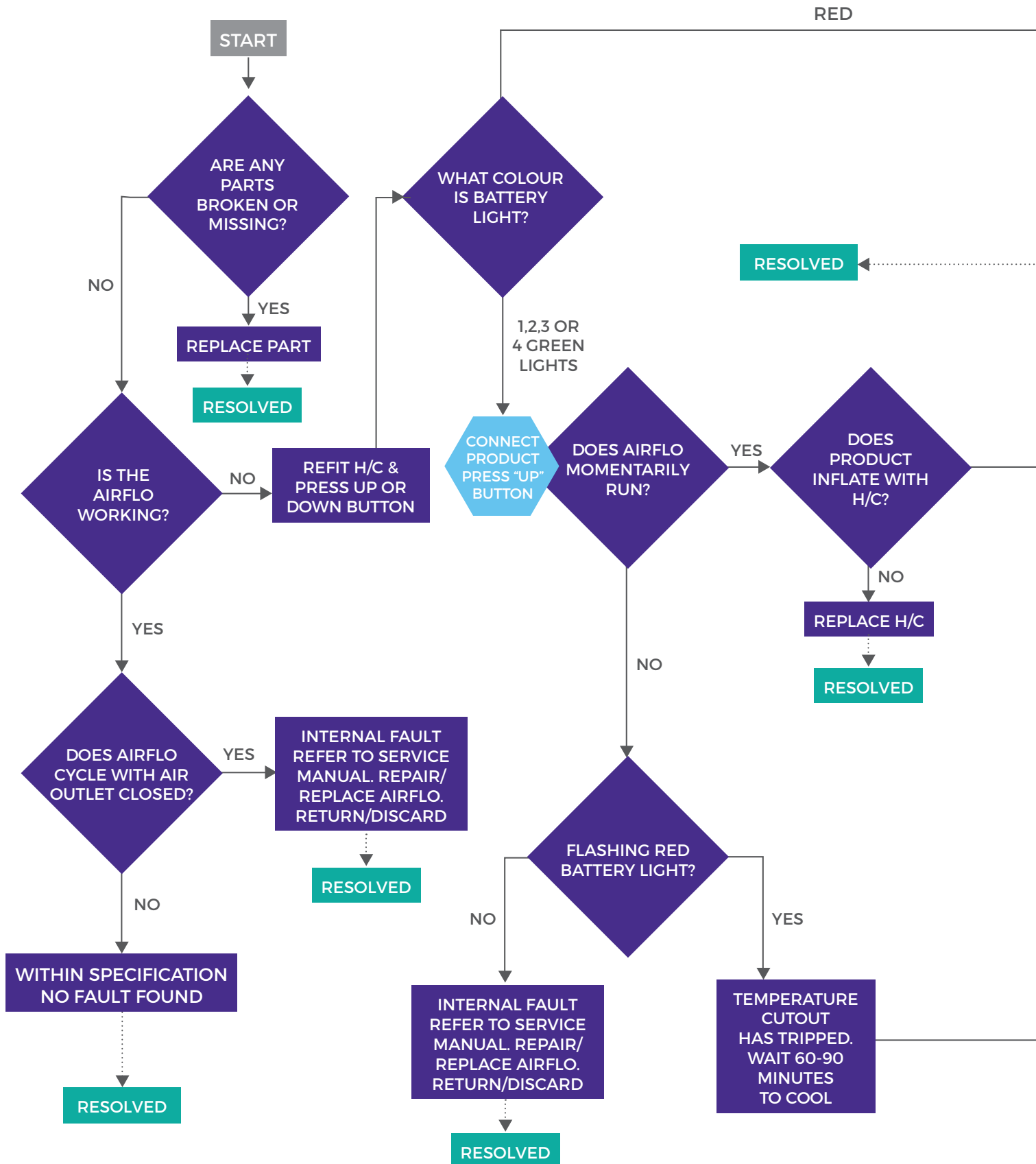


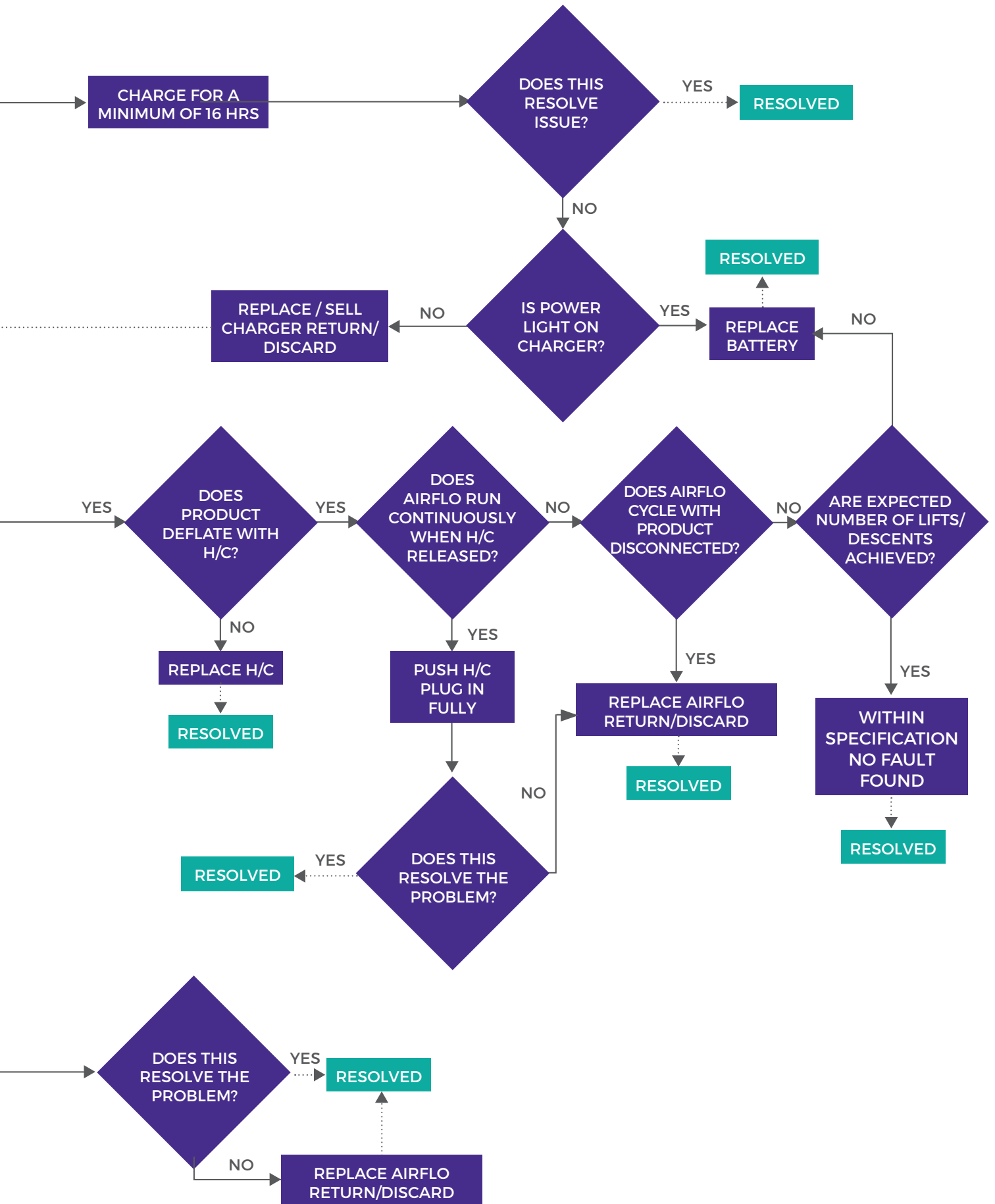
Airflo Plus Fault Finding Chart



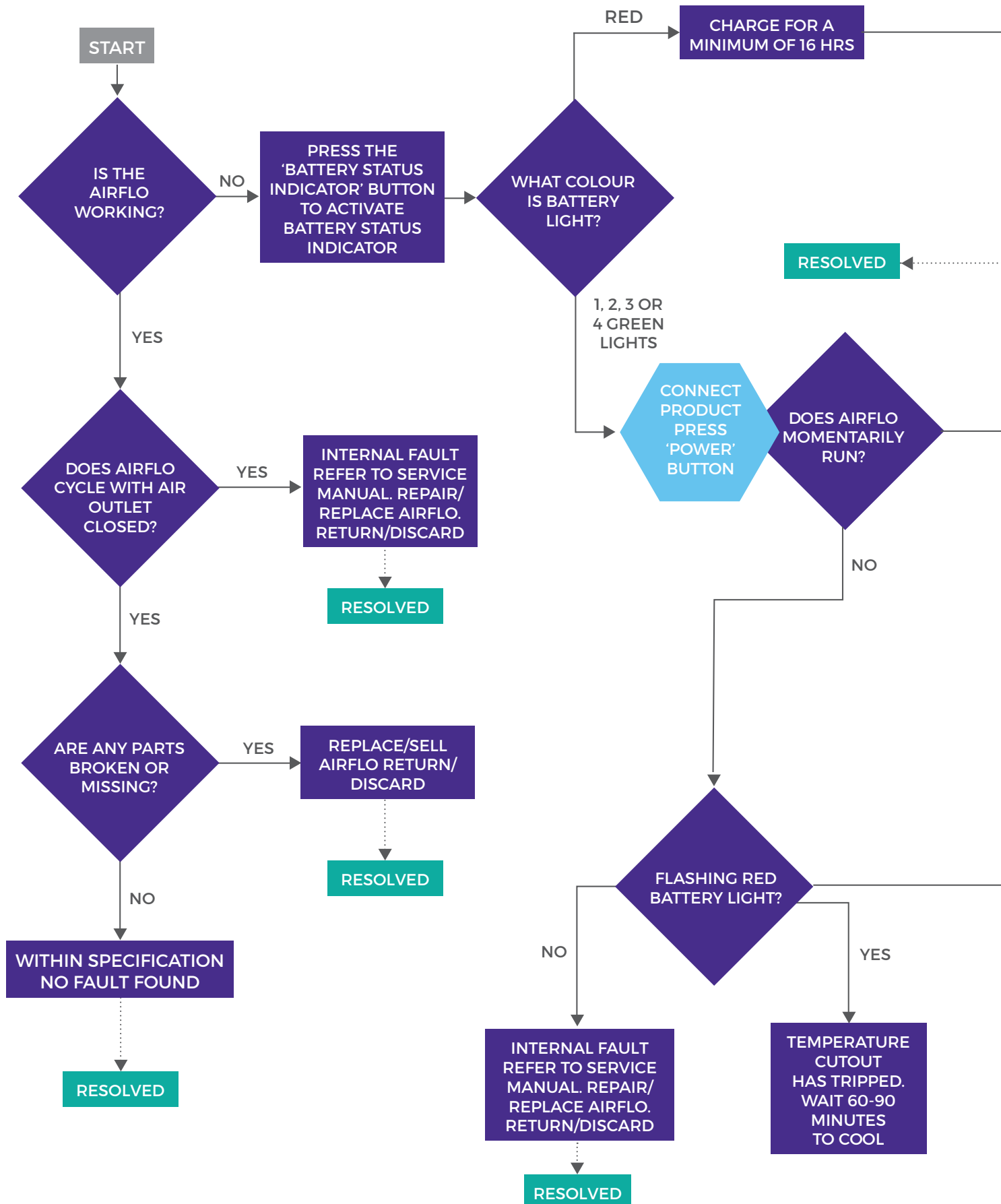


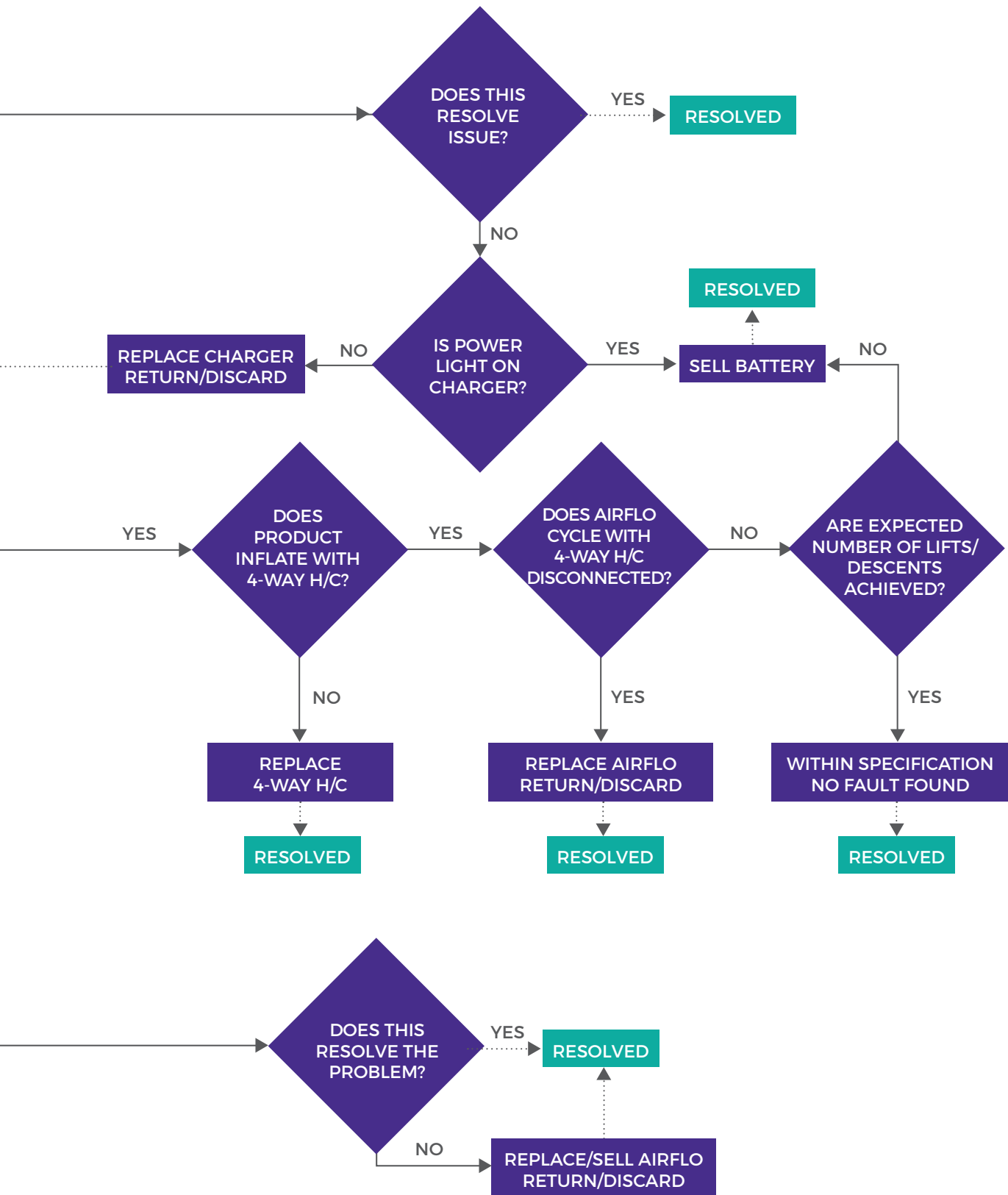
Airflo 12 Fault Finding Chart





Airflo 24 Fault Finding Chart







Keep in touch

855-9-MANGAR

usa@mangarhealth.com

www.mangarhealth.com



[Sign up for enews](#)

ML0101