



The sorbion range

health needs care

Now
part of the
BSN medical
family

www.bsnmedical.co.uk

BSN medical

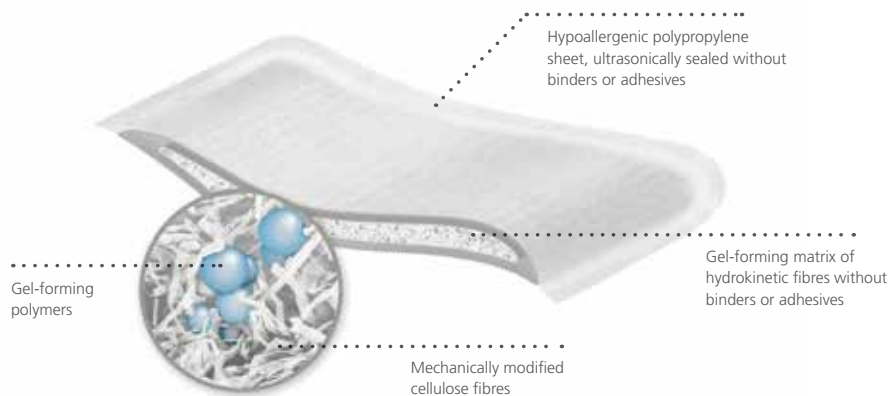
sorbion sachet EXTRA

Powerful Exudate Management



sorbion sachet EXTRA binds and retains large quantities of wound exudate and detrimental agents which are damaging to the wound bed.

sorbion sachet EXTRA dressings are produced utilising innovative methods resulting in a **hydration response technology** core - a unique composition of selected active components: cellulose fibres and gel-forming polymers.



Clinical benefits

Supported by excellent clinical and cost effective evidence **sorbion sachet EXTRA** provides benefits to clinicians:

- ✓ Outstanding exudate absorption capacity and retention^[1]
- ✓ Can be used effectively under compression^[2]
- ✓ Management of proteases, cytokines and free radicals^[3]
- ✓ Reduction of bacterial load^[4]
- ✓ Soft debridement^[2]
- ✓ Maintains dressing integrity^[5]
- ✓ Helps to reduce odour^[6]
- ✓ Peri-wound protection helps prevent maceration and excoriation^[7]
- ✓ Easy to apply^[8]
- ✓ Hypoallergenic
- ✓ Provides up to 4 days wear time
- ✓ May be utilised on a wide range of indications
- ✓ No need to layer up dressings

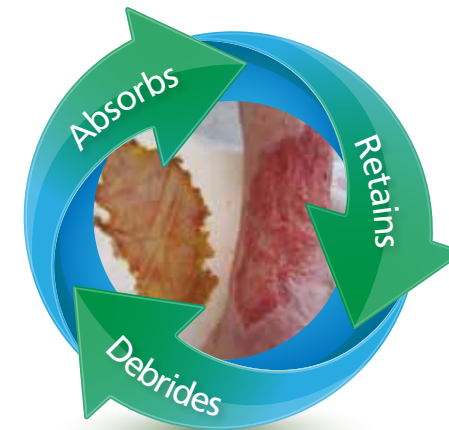
Patient benefits

Containing no glues or adhesives **sorbion sachet EXTRA** is hypoallergenic and provides benefits to patients:

- ✓ Long lasting patient comfort^[9,10]
- ✓ Long lasting wear time with no risk of leakage
- ✓ Helps to reduce odour^[6]

Cost effective

- ✓ Primary dressings - place directly to the wound bed
- ✓ No need to layer up - less bulky, less costly, less products
- ✓ Absorbs up to 91% more than other superabsorbent dressings^[11]
- ✓ Up to 52% savings in dressing costs^[12]
- ✓ Reduces Healthcare Professional costs by up to 33%^[12] - fewer visits
- ✓ Reduced dressing changes



sorbion sachet drainage
for Catheters and Drainage Tubes



sorbion sachet XL

Powerful Exudate Management for large difficult-to-dress wounds



The shape and size of **sorbion sachet XL** has been specially designed to treat moderate to highly exuding difficult-to-dress wounds on the following anatomical sites:



The **sorbion sachet** product range stands apart from many other dressings in terms of its performance:

- ✓ Designed to stay in place where you need it
- ✓ Outstanding exudate absorption capacity and retention^[1]
- ✓ Can be used effectively under compression^[2]
- ✓ Management of proteases, cytokines and free radicals^[3]
- ✓ Reduction of bacterial load^[4]
- ✓ Soft debridement^[2]
- ✓ Maintains dressing integrity^[5]
- ✓ Long lasting patient comfort^[9,10]
- ✓ Easy to apply^[8]
- ✓ Helps to reduce odour^[6]
- ✓ Peri-wound protection helps prevent maceration and excoriation^[7]
- ✓ Hypoallergenic
- ✓ Up to 4 days wear time

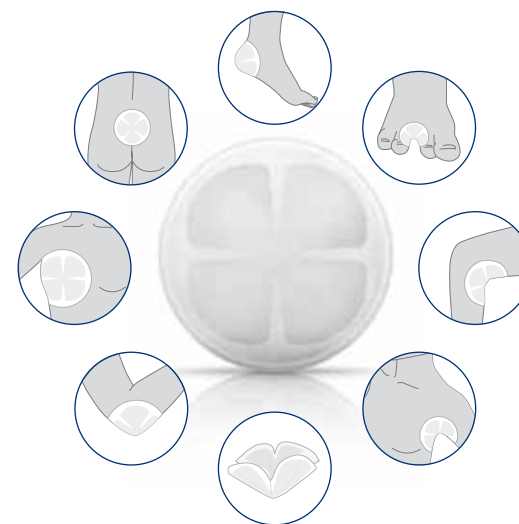
sorbion sachet multi star

Powerful Exudate Management in its most flexible form



sorbion sachet multi star has a unique shape allowing flexible application for use on sites such as the toes, heel, foot, sacrum, chest, axillae, elbows or wound cavities.

The **sorbion sachet multi star** dressing core expands to absorb and retain exudate. **sorbion sachet multi star** is ideal for difficult-to-dress anatomical sites.



sorbion sachet multi star provides solutions for moderate to highly exuding wounds in many shapes and sizes:

- ✓ Flexible application^[13]
- ✓ Outstanding exudate absorption capacity and retention^[1]
- ✓ Can be used effectively under compression^[2]
- ✓ Management of proteases, cytokines and free radicals^[3]
- ✓ Reduction of bacterial load^[4]
- ✓ Soft debridement^[2]
- ✓ Maintains dressing integrity^[5]
- ✓ Long lasting patient comfort^[9,10]
- ✓ Easy to apply^[8,13]
- ✓ Helps to reduce odour^[6]
- ✓ Peri-wound protection helps prevent maceration and excoriation^[7]
- ✓ Hypoallergenic
- ✓ Up to 4 days wear time

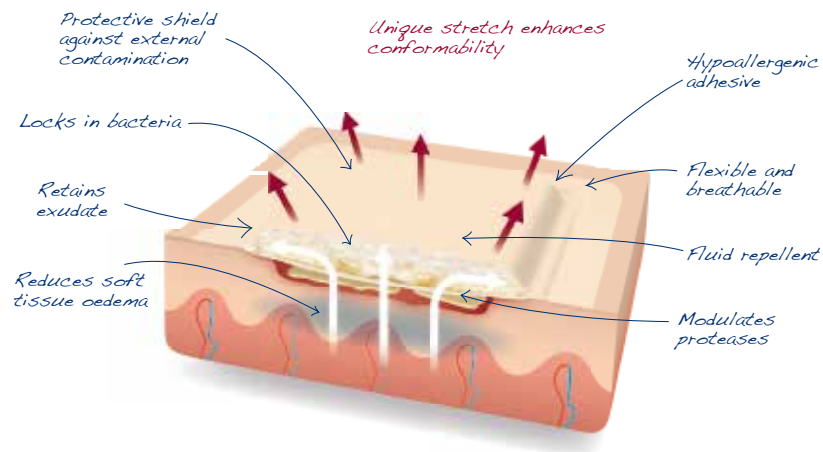
sorbion sachet border

Hypoallergenic Adhesive Dressing



sorbion sachet border is an adhesive variant in the growing **sorbion sachet** range, providing maximum performance and comfort.

The innovative design combines a protective shield to external contaminants and the **hydration response technology** core makes **sorbion sachet border** ideal for moderate to highly exuding wounds where quick and easy application is required.



The product design of **sorbion sachet border** provides excellent fluid management properties:

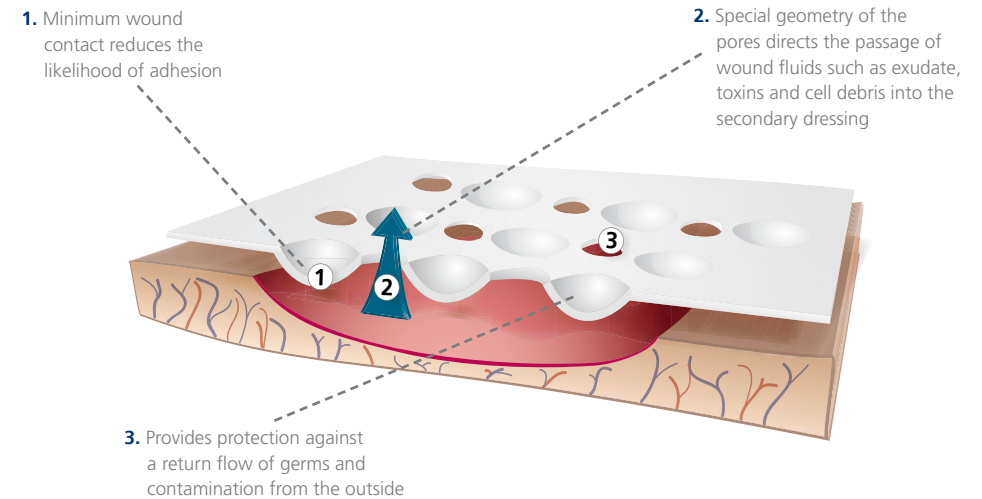
- ✓ Outstanding exudate absorption capacity and retention^[1]
- ✓ Management of proteases, cytokines and free radicals^[3]
- ✓ Reduction of bacterial load^[4]
- ✓ Soft debridement^[2]
- ✓ Maintains dressing integrity^[5]
- ✓ Long lasting patient comfort^[9,10]
- ✓ Easy to apply^[8]
- ✓ Helps to reduce odour^[6]
- ✓ Peri-wound protection helps prevent maceration and excoriation^[7]
- ✓ Up to 4 days wear time

sorbion contact

Atraumatic Protection



sorbion contact combines an innovative 3 dimensional structure with an inert material (ultra low density polyethylene). **sorbion contact** is a modern wound contact layer that provides atraumatic protection with minimum wound contact.



The product design of **sorbion contact** provides atraumatic protection:

- ✓ No adhesion^[14]
- ✓ Gentle^[14]
- ✓ Minimises trauma^[14]
- ✓ Easy removal^[14]
- ✓ Supports the drainage of wound fluids
- ✓ Breathable
- ✓ Free from allergens: silicone, fats and latex
- ✓ Up to 7 days wear time
- ✓ Wide variety of applications including Negative Pressure Wound Therapy^[14]
- ✓ Supports secondary dressings
- ✓ Flexible^[14]
- ✓ May be cut to shape

sorbion sana gentle

Atraumatic Wound Healing



sorbion sana gentle combines a **hydration response technology** core and a unique 3D wound contact layer to support tissue development. **sorbion sana gentle** is indicated as a primary dressing for low to highly exuding wounds of varying aetiologies and is hypoallergenic, making it an ideal dressing for all patients even those with contact sensitivities.

Hydration response technology binds two specially selected active components that work together to help absorb and retain large quantities of wound exudate and detrimental agents, which are damaging the wound.

Key benefits

- ✓ Outstanding exudate absorption capacity and retention^[11]
- ✓ Tissue protection - minimises pain and trauma^[15]
- ✓ Hypoallergenic - ideal for sensitive skin^[15]
- ✓ Cost effective - up to 7 days wear time
- ✓ Easy application - dual sided
- ✓ Promotes fast healing^[16]
- ✓ No need for wound contact layer
- ✓ No need to layer-up dressings
- ✓ Can be used effectively under compression^[15]
- ✓ Peri-wound protection helps prevent maceration and excoriation^[16]

Exudate management

sorbion sana gentle may be used across the spectrum for low to highly exuding wounds:

	Sloughy	Exudate	Granulating	Epithelialising
sorbion sana gentle	✓	Any	✓	✓
Superabsorbent	✓	High		
Foam	✓	Low / medium	✓	✓
Hydrofibre	✓	Low		

Clinically effective

Contact sensitivities among patients with chronic wounds are prevalent. Whilst a vast array of wound contact dressings and bandages exist, many of these contain potential skin sensitising agents and should be avoided.^[15]

sorbion sana gentle's hypoallergenic properties are ideal for sensitive skin, helping to prevent clinical deterioration where contact sensitivities are known, thus preventing 'avoidable incidences of harm'^[17] by ensuring patients have positive outcomes.



Mr M. 42 yrs.
Extensive slough, ulceration.
Anti-phospholipid syndrome – multiple DVT.



Venous leg ulcer of a 51 year old female patient. Treated with **sorbion sana** in the granulating phase of healing.



Ulcer is cleaner. Islands of epithelium extending. No skin sensitivities. Exudate controlled & dressing frequency reduced from 5 to 3 times per week.



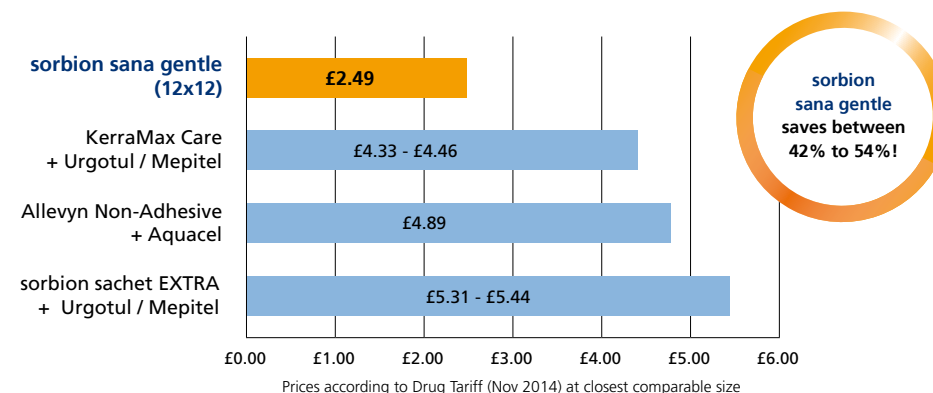
After 15 weeks the wound is completely healed.

QIPP and cost effectiveness

sorbion sana gentle provides the combined benefits of a wound contact layer and optimum fluid management properties.

The Quality, Innovation, Productivity & Prevention (QIPP) programme focuses on improved quality of life and total cost savings. **sorbion sana gentle** meets NHS priorities by providing an innovative, high quality product and the opportunity for the NHS to reduce costs by: improving healing rates, reducing nursing visits and reducing dressing changes.^[16]

Foams, hydrofibres and superabsorbents are often used inappropriately or in combination with other products leading to high costs. **sorbion sana gentle** provides a cost effective alternative:



Ordering Details

sorbion sachet EXTRA - Powerful Exudate Management

Item name	Size	Items per unit	Product code	PIP code	NHS code
sorbion sachet EXTRA	5cm x 5cm	5	73234-00	379-5846	EJE153
sorbion sachet EXTRA	7.5cm x 7.5cm	5	73234-01	372-2212	EME106
sorbion sachet EXTRA	10cm x 10cm	5	73234-02	372-2220	EME107
sorbion sachet EXTRA	20cm x 10cm	5	73234-03	372-2238	EME108
sorbion sachet EXTRA	20cm x 20cm	5	73234-04	372-2246	EME110
sorbion sachet EXTRA	30cm x 20cm	5	73234-05	372-2253	EME112

sorbion sachet XL - Powerful Exudate Management for large difficult-to-dress wounds

Item name	Size	Items per unit	Product code	PIP code	NHS code
sorbion sachet XL	45cm x 25cm	5	73240-01	388-3402	EME105

sorbion sachet drainage - for Catheters and Drainage Tubes

Item name	Size	Items per unit	Product code	PIP code	NHS code
sorbion sachet drainage	10cm x 10cm	10	73241-00	354-6777	EJE152

sorbion sachet multi star - Powerful Exudate Management in its most flexible form

Item name	Size	Items per unit	Product code	PIP code	NHS code
sorbion sachet multi star	8cm x 8cm	5	73237-00	375-5717	EJE154
sorbion sachet multi star	14cm x 14cm	5	73237-02	375-5725	EJE155

sorbion sachet border - Hypoallergenic Adhesive Dressing

Item name	Size	Items per unit	Inner	Product code	PIP code	NHS code
sorbion sachet border	10cm x 10cm	5	5cm x 5cm	73236-06	379-5853	EJE151
sorbion sachet border	15cm x 15cm	5	10cm x 10cm	73236-07	369-5442	EME103
sorbion sachet border	25cm x 15cm	5	20cm x 10cm	73236-08	369-5467	EME104

sorbion sana gentle - Atraumatic Wound Healing

Item name	Size	Items per unit	Product code	PIP code	NHS code
sorbion sana gentle	8.5cm x 8.5cm	10	73233-19	344-1722	EME114
sorbion sana gentle	12cm x 12cm	10	73233-22	344-1755	EME115
sorbion sana gentle	22cm x 12cm	10	73233-25	344-1748	EME116
sorbion sana gentle	22cm x 22cm	10	73233-14	344-1730	EME119
sorbion sana gentle	32cm x 22cm	10	73233-16	385-6564	EME113

sorbion contact - Atraumatic Protection

Item name	Size	Items per unit	Product code	PIP code
sorbion contact	7.5cm x 7.5cm	5	73246-00	373-7228
sorbion contact	10cm x 10cm	5	73246-01	373-7236
sorbion contact	20cm x 10cm	5	73246-04	373-7244
sorbion contact	20cm x 20cm	5	73246-02	373-7251
sorbion contact	30cm x 20cm	5	73246-03	374-1857

References

- [1] Cutting, K., Westgate, S., Super-absorbent dressings: how do they perform in vitro? BJN, 2012, 21 (20)
- [2] Romanelli, M., A pilot study evaluating the wound and skin care performances of the Hydration Response Technology dressing: a new concept of debridement. J Wound Technology, 2009 (5)
- [3] Bamford, S., Williams, D., Cutting, K., Evaluation of antimicrobial activity of a wound dressing containing Hydration Response Technology. EWMA, 2011
- [4] Evans, J., Elimination of longstanding wound infection (MRSA) using a highly absorbent dressing with Hydration Response Technology. JCN 2010
- [5] Hermans, M.H.E. and Cutting, K., NPWT or HRT-dressing? Results of an expert panel and a Delphi panel analysis, JWC, 2013, 22 (11)
- [6] Chadwick, P., The use of a dressing with super absorbent polymers in the treatment of a long standing diabetic foot wound: a case study. Diabetic Foot J, 2008, 11 (4) 183-186
- [7] Sharp, C., Efficient management of the wound environment using Hydration Response Technology. EWMA, 2010
- [8] Williams, P., The use of sorbion sachet dressings in the management of a complex diabetic foot ulcer, Wounds UK, 2013
- [9] Cooper, R., Riepe, G. and Romanelli, M., Biofilms and the role of debridement in chronic wounds, Wounds UK, 2010, 6 (10) 160-166
- [10] Cutting, K., Clinical evaluation of a new high absorbency dressing, Wounds UK, 2009
- [11] Based on 10cm x 10cm dressings. Absorbency figures rounded to the nearest whole number. Tested by an independent laboratory: SAS Hagmann GmbH, Weberstrasse 3, D-72160 Horb am Neckar
- [12] Guest, J.F., Cutting, K., Panca, M., Clinical and cost-effectiveness of absorbent dressings in the treatment of highly exuding VLU. JWC, 2013, 22 (3)
- [13] Amalani, A., sorbion sachet multi star; evaluating ease of use and conformability for those difficult to dress wound sites. Wounds UK 2012
- [14] Acton, C., Cutting, K. Six patient comparative evaluation of sorbion contact v Mepitel when used under Granufoam, Wounds UK, 2012
- [15] Beldon, P., Contact sensitivities in chronic wounds and the need for hypoallergenic dressings, European Dermatology, 2009
- [16] Beldon, P., sorbion sana: a non-adherent, highly absorbent, hypoallergenic dressing. BJCN, 2009, 14 (3)
- [17] Domain 4/5, NHS Outcomes Framework 2013/14



sorbion sachet XL



sorbion sachet EXTRA



sorbion sachet multi star



sorbion sachet border



sorbion sachet drainage



sorbion sana gentle



sorbion contact

sorbion
health needs care



sorbion sachet XL

For large difficult-to-dress wounds

- ✓ Specially designed to treat moderate to highly exuding wounds
- ✓ Protection against maceration and skin irritation
- ✓ Can be used under compression bandages
- ✓ Helps to manage odour due to reduction of bacterial burden
- ✓ Long lasting patient comfort
- ✓ Easy to apply

**NOW ON
DRUG TARIFF**