

# JOBST® UlcerCARE™

## The 2 in 1 compression system

### Recommendations for use



Cover any open wounds with an appropriate wound dressing before donning the JOBST UlcerCARE liner. The JOBST UlcerCARE stocking with zipper is easily applied over the liner.



The JOBST UlcerCARE liner should be changed in accordance with daily hygiene needs and wound inspection requirements.



While the JOBST UlcerCARE liner may be worn 24 hours a day, the patient must remove the medical stocking with zipper during bed rest.



After complete healing of the venous ulcer, continued use of JOBST UlcerCARE or any other appropriate medical compression stocking (e.g. JOBST Medical LegWear) is recommended to help prevent recurrence.

### Contraindications

The JOBST UlcerCARE compression system is contraindicated when any of the following conditions are present:

- Severe arterial insufficiency
- Congestive heart failure (decompensated)
- Cutaneous infections (skin infections)
- Dermatitis in the acute or exudative stages
- Diabetic ulcers

### Cautions

- Not to be used over open wounds without appropriate wound dressing
- Medical stocking with zipper should only be used by ambulatory patients
- Not to be used in case of sensitivity to the stocking material

### Ordering information:

	Ankle	Calf	JOBST UlcerCARE Zipper Stocking and Liners		Pack Quantity (Stocking/Liners)	JOBST UlcerCARE Replacement Liners	Pack Quantity (Liners)
			Zipper on Right Side	Zipper on Left Side			
Small	18 – 21cm	29 – 35cm	73631-61	73631-21	1 stocking/2 liners	73632-21	3 liners
Medium	21 – 24cm	34 – 41cm	73631-62	73631-22	1 stocking/2 liners	73632-22	3 liners
Large	24 – 27cm	40 – 47cm	73631-63	73631-23	1 stocking/2 liners	73632-23	3 liners
X-Large	27 – 30cm	46 – 54cm	73631-64	73631-24	1 stocking/2 liners	73632-24	3 liners
XX-Large	30 – 33cm	48 – 56cm	73631-65	73631-25	1 stocking/2 liners	73632-25	3 liners
XXX-Large	33 – 36cm	50 – 58cm	73631-66	73631-26	1 stocking/2 liners	73632-26	3 liners
XXXX-Large	36 – 39cm	52 – 60cm	73631-67	73631-27	1 stocking/2 liners	73632-27	3 liners

Please refer to the product label and / or package insert for full instructions on the safe use of these products.



DISTRIBUTED BY:

Smith & Nephew Pty Ltd Healthcare Division

**Australia** 315 Ferntree Gully Road (PO Box 242), Mount Waverley 3149, Victoria Australia  
T 61 3 8540 6777, F 61 3 9544 5086, Customer Service T 13 13 60, F 1800 671 000, [www.smith-nephew.com.au/healthcare](http://www.smith-nephew.com.au/healthcare)

**New Zealand** 621 Rosebank Road Avondale (PO Box 442), Auckland 1140 New Zealand  
T 64 9 828 4059, F 64 9 820 2867, Customer Service T 0800 807 663, F 0800 263 222, [www.smith-nephew.com/nz](http://www.smith-nephew.com/nz)

©Registered Trademark

©2013 Smith & Nephew SN10869 (07/13)



New sizes available!

JOBST® UlcerCARE™



2-in-1 compression system for the effective management of venous leg ulcers.



# Understanding venous leg ulcers

**Compression can be considered the cornerstone in the therapy of venous leg ulcers. Adequate compression supports venous flow and shows effects on deep venous haemodynamics\* – ultimately providing large improvements in pain, mobility and general quality of life for the patient.**

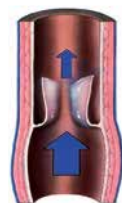
## How do venous leg ulcers develop?

Venous insufficiency is the most common underlying cause of a venous leg ulcer. The compromised blood flow to the heart is mainly caused by venous valve incompetence. The resulting reflux leads to an ambulatory venous hypertension which also extends into the capillaries. As a consequence, nutrients and oxygen are unable to diffuse to the skin, causing death of skin tissue and the development of a venous leg ulcer.



Venous ulcers are characteristically located inside the lower extremity.

### Regular function of venous valves

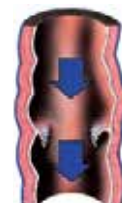


*Open valve:*  
Blood can flow towards the heart.



*Closed valve:*  
Blood cannot flow back towards distal.

### Malfunction of venous valves



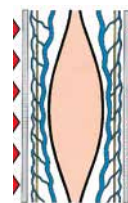
Deficient valve allows the venous blood to reflux.

## Compression and stiffness factor:

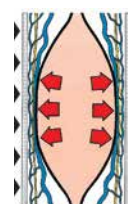
Adequate compression is necessary when venous flow is impaired. As venous valves are compromised, a sustained compression of 40 mmHg\* or more at the ankle is the recommended pressure to support venous return.

At this point, the specific stiffness of a compression device becomes a crucial factor. The higher the stiffness, the higher the working pressure and the effect of the muscle pump.

Compression provides the best conditions to heal the ulcer: the subsequent reduction of the local blood volume leads to lower venous reflux and the reduction of ambulatory venous hypertension.



Continuous pressure, exerted onto the body from the outside with the muscles at rest, is called "resting pressure".



"Working pressure" is exerted temporarily from inside outwards as the muscles are working and the diameter of the body part increases.

# JOBST® UlcerCARE™ The compression system designed for patient compliance

**JOBST® UlcerCARE™ enables effective management of a venous leg ulcer while offering ease of use – the perfect combination for providing patients with a higher quality of life.**

## Features and benefits:

### JOBST® UlcerCARE™ Compression System

- **provides graduated compression of 40 mmHg\*\*** the recommended pressure for the healing of venous leg ulcers.\*
- **delivers a high stiffness factor** to provide effective compression.
- **is a 2-in-1 system** for easy handling by patients or caregivers.
- **has a fast moisture transport** for patient comfort.
- **is washable** for improved hygiene.



The special design of the outer stocking's pattern provides more friction to the liner, enhancing the system's stiffness.

### JOBST® UlcerCARE™ Liner

- **provides mild compression (17mmHg\*\*) for the non-ambulatory patient** to help manage lower leg oedema during bed rest.
- **may be worn 24 hours a day** by non-ambulatory patients and to hold a wound dressing in place.
- **has an integrated heel and toe** for high wearing comfort.
- **contains silk** to promote healthy skin, facilitate donning and improve patient compliance.



### JOBST® UlcerCARE™ Outer Stocking

- **is designed for patient's self-management** to facilitate easy changing of the wound dressing and to allow for improved personal hygiene, e.g. bathing.
- **interacts with low friction on the liner** making it easy to don.
- **has an improved zipper** for easy donning.
- **is available with the zipper on the left or right side** for comfortable closure on the opposite side of the wound.
- **has an integrated heel and open toe** for high wearing comfort.

