

SILVERCEL™ NON-ADHERENT

Prior to applying SILVERCEL™ NON-ADHERENT, your healthcare provider will prepare the wound using standard wound care protocols which may include removal of any necrotic tissue by debridement.

Need to re-order more SILVERCEL™ NON-ADHERENT?

See the table below of manufacturer item codes and available sizes.

For more information,
please contact
Systagenix Customer
Care **1.866.978.3296**

SILVERCEL™ NON-ADHERENT		
Item Code	Size	HCPCS Code
900112	1" x 12"	A6199 - 2 units
900202	2" x 2"	A6196
900404	4 1/4" x 4 1/4"	A6197
900408	4" x 8"	A6197

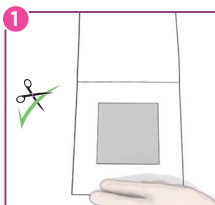
These are dressing application and removal guidelines for patient use. Please refer to the full instructions for use or consult a health care professional if you have any concerns about your dressing regime.



USER GUIDE

BEFORE APPLICATION

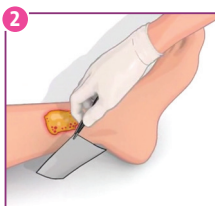
Refer to the instructions for use. Select a size of **SILVERCEL™ NON-ADHERENT** that is slightly larger than the wound. Debride when necessary and irrigate the wound site in accordance with appropriate wound management protocol. Remove any excess solution from surrounding skin. Remove the dressing from the box.



Dressing preparation

Opening the pouch

1. Cut (using clean scissors) **SILVERCEL™ NON-ADHERENT** or fold the dressing to fit the wound.
2. Ensure **SILVERCEL™ NON-ADHERENT** will not overlap the wound margins. Carefully remove **SILVERCEL™ NON-ADHERENT** from the pouch using aseptic technique and forceps.



Dressing application

1. Gently apply **SILVERCEL™ NON-ADHERENT** to the wound.
2. Loosely pack deep wounds, ensuring the dressing does not overlap the wound margins. As wound conditions improve and exudate levels decrease, moisten the dressing with normal saline solution.



Secondary dressing application

Cover **SILVERCEL™ NON-ADHERENT** with a secondary dressing such as **TIELLE®**.

Choose the secondary dressing based on the level of exudate.



Dressing change and removal

Dressing change frequency will depend on wound condition and the level of exudate. Reapply **SILVERCEL™ NON-ADHERENT** when the secondary dressing has reached its absorbent capacity or according to good wound care practice.

1. Gently remove the secondary dressing.
2. Gently remove the dressing from the wound bed and discard. If the wound appears dry, saturate the dressing with sterile saline solution prior to removal. Irrigate the wound site prior to application of a new dressing.