

DISTINCT PRODUCTS



EXPERIENCES THAT MATTER

**Striving
to be
#1 IN PATIENT
SATISFACTION**

THE SALTER PROMISE

Salter Labs offers an innovative, best-in-class portfolio of healthcare solutions that enhance the patient experience.

Throughout the continuum of care Salter Labs puts the patient first by way of our product design innovations and unique service offerings.

In everything we do...
We deliver experiences that matter for both patients and healthcare providers.

 **SALTER LABS®**
DESIGN INNOVATIONS
FOR RESPIRATORY CARE





TABLE OF CONTENTS

OXYGEN DELIVERY

A1-A35

CAPNOGRAPHY (EtCO₂)

B1-B11

AEROSOL DELIVERY

C1-C16

PRODUCT INDEX BY ITEM NUMBER

D1-D5





OXYGEN DELIVERY

Cannulas	A2
Adult	A4
Adult Specialty	A12
Pediatric	A16
Tubing and Connectors	A19
Securement	A23
Humidifiers and Water Traps	A25
Bubble	A26
High Flow	A26
Connector Tubing	A27
Inline Water Traps	A27
Oxygen Masks	A28
Adult	A29
Pediatric	A30
Percent-O ₂ -Lock® Venturi	A32
Accu-Flow®	A33
Concentrator Oxygen Indicators	A34

CANNULA OPTIONS FROM SALTER

Salter cannulas provide real patient comfort and convenience. Unique features set them apart, while providing patients with many facets they quickly find unique and satisfying.

Over the years, Salter Labs has established a reputation for quality performance in cannulas that is unmatched and expected. Our customers have come to rely on Salter, and are rarely disappointed. You'll find the range of Salter products and offerings today gives you the choice to perfectly match the cannula to the patient...precisely.

You can expect Salter cannulas to provide:

- Curved, tapered nasal prongs
- Comfortably shaped facepieces
- Lightweight feel; not made with natural rubber latex
- Twist-resisting slide bolo
- Quality and wearability



Match our cannulas to your needs

STANDARD

DEMAND

Flow rates

Adults
Pediatric

Up to 3 LPM

A13, A14

A17

Up to 6 LPM

A5, A13

A17

Up to 8 LPM

A13, A15

Up to 15 LPM

A10

Up to 6 LPM

A9

A18

Tubing style

3-channel

A6, A10, A11,
A13, A14, A20

Smooth-bore

A8, A11, A13

Smooth-bore

A9

Features

Micro-facepiece

A14

Thread grip

A21

Non-flared tips

A11

Separate

A9

Both

A9

Masks

Adult

A29

Pediatric

A16, A30

Venturi System
Percent O₂

A32

Venturi System
Accu-Flow®

A33

Add-ons

Tubing

A6

Connectors

A22

Humidifiers

A25

Securement

A24

Premium items

TLC

A12, A18

Quiet-flow

A15, A18

High flow

A10

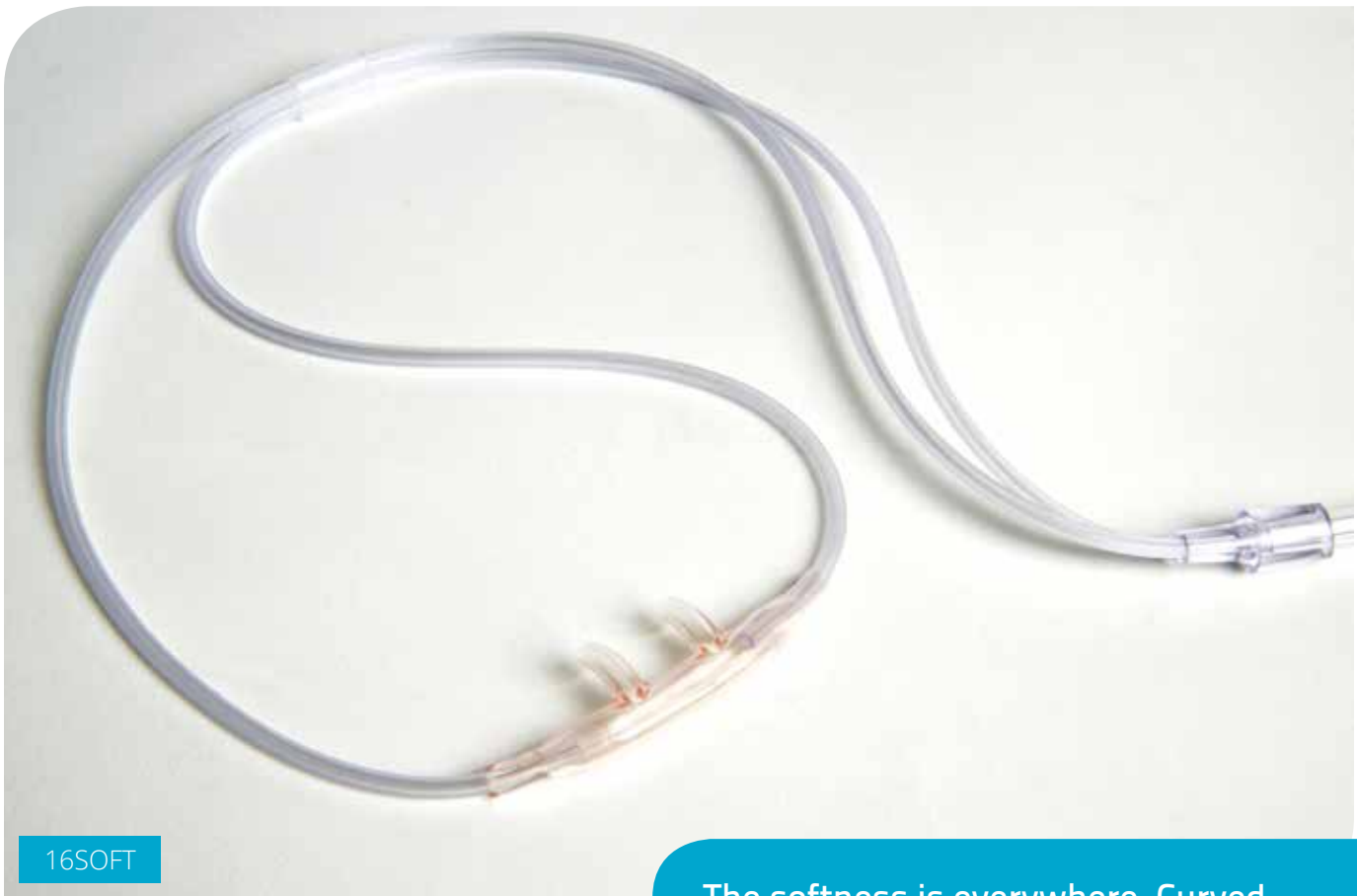
16SOFT

A4

ADULT CANNULAS

16SOFT Cannula

Designed to deliver comfort with soft material in both the tubing and facepiece for a soft-to-the-touch feel throughout.



The softness is everywhere. Curved, comfortable prongs fit gently into patients' nostrils without pressing too hard upon the upper lip. Soft, pliable, stretchable tubing curves around the cheeks and ears, lessening any pressure. And the Salter 16SOFT features a totally redesigned slide bolo to resist twisting and turning.

Adult soft cannulas with 3-channel safety supply tubing for low flow volumes up to 6 LPM

Description	Units per case	Item number
Without supply tubing	50	16SOFT-0-5
4' supply tubing	50	16SOFT-4-50
7' supply tubing	50	16SOFT-7-50
14' supply tubing	50	16SOFT-14-50
25' supply tubing	25	16SOFT-25-25

You may also consider:

Description	Units per case	Item number
16SOFT soft cannula with 7' soft 3-channel safety tubing for high flows up to 15 LPM	25	16SOFT-HF-7-25
16SOFT soft cannula with 14' soft 3-channel safety tubing for high flows up to 15 LPM	25	16SOFT-HF-14-25
16SOFT soft cannula with 25' soft 3-channel safety tubing for high flows up to 15 LPM	10	16SOFT-HF-25-10
25' green oxygen supply tubing	25	2025G-25-25
Swivel connector for attaching tubing and avoiding kinks	25	1220-0-25
Tender Grip® stickers for comfortably securing cannulas to skin	100	1006-0-100

Original Salter-Style® Cannula

For oxygen flows up to 6 LPM with the Salter-Style® curved facepiece that patients have preferred for over 25 years.

1600-Series Salter-Style cannulas with 3-channel safety supply tubing for low flow volumes up to 6 LPM

Description	Units per case	Item number
Without supply tubing	50	1606-0-50
Without supply tubing and with green barbed end fitting	50	1606B-0-50
1' supply tubing	50	1600-1-50
4' supply tubing	50	1600-4-50
7' supply tubing	50	1600-7-50
7' supply tubing with female thread grip connector	50	1699-7-50
9' supply tubing	50	1600-9-50
10' supply tubing	50	1600-10-50
12' supply tubing	50	1600-12-50
13' supply tubing	50	1600-13-50
14' supply tubing	50	1600-14-50
15' supply tubing	50	1600-15-50
16' supply tubing	50	1600-16-50
20' supply tubing	25	1600-20-25
21' supply tubing	25	1600-21-25
24' supply tubing	25	1600-24-25
25' supply tubing	25	1600-25-25
30' supply tubing	20	1600-30-20
35' supply tubing	20	1600-35-20
40' supply tubing	20	1600-40-20
50' supply tubing	20	1600-50-20



1699

You may also consider:

Description	Units per case	Item number
Salter TLCannula™ with cushioned ear wraps and 4' oxygen supply tubing	25	1600TLC-4-25
Salter TLCannula with cushioned ear wraps and 7' oxygen supply tubing	25	1600TLC-7-25
25' green oxygen supply tubing	25	2025G-25-25
50' green oxygen supply tubing	20	2050G-50-20
Swivel connector for attaching tubing and avoiding kinks	100	1220-0-100
Tender Grip® stickers for comfortably securing cannulas to skin	100	1006-0-100

Our most popular models are indicated by **Salter Green** throughout this catalog.



Original Salter-Style® Cannula (continued)

1600-Series Salter-Style cannulas with smooth-bore supply tubing for low flow volumes up to 6 LPM

Description	Units per case	Item number
4' supply tubing	50	1650-4-50
7' supply tubing	50	1650-7-50
10' supply tubing	50	1650-10-50
14' supply tubing	50	1650-14-50
25' supply tubing	25	1650-25-25
50' supply tubing	20	1650-50-20

Demand Cannulas

Specifically designed for Dual Port Oxygen Conservation Delivery systems in a full range of sizes and flow rates up to 6 LPM.



Adult demand cannulas with sense and delivery in separate nares and smooth-bore supply tubing

Description	Units per case	Item number
4' supply tubing	25	4804-4-4-25
5' supply tubing	25	4805-5-5-25
7' supply tubing	25	4807-7-7-25

Adult demand cannulas with sense and delivery in each naris and smooth-bore supply tubing

Description	Units per case	Item number
4' supply tubing	25	4904-4-4-25
5' supply tubing	25	4905-5-5-25
7' supply tubing	25	4907-7-7-25

Our most popular models are indicated by **Salter Green** throughout this catalog.

High Flow Cannula

For oxygen flows up to 15 LPM where patients prefer comfort and convenience instead of a mask (includes bright green supply tubing).



Salter-Style high flow cannulas with 3-channel safety supply tubing for high flow volumes up to 15 LPM

Description	Units per case	Item number
4' supply tubing	25	1600HF-4-25
7' supply tubing	25	1600HF-7-25
14' supply tubing	25	1600HF-14-25
25' supply tubing	10	1600HF-25-10
50' supply tubing	10	1600HF-50-10

You may also consider:

16SOFT soft cannula with 7' soft 3-channel safety tubing for high flows up to 15 LPM	25	16SOFT-HF-7-25
High flow 350cc dry bubble humidifier for flows from 6-15 LPM	25	7900-0-25
High flow convenience kit with one 7' high-flow soft cannula and one 7900 high flow humidifier	25	79SOFT-7-25

Conventional-Style Cannulas

For oxygen flows up to 6 LPM and features non-flared tips with adjustable tubing.



Conventional-style cannulas with 3-channel safety supply tubing for low flow volumes up to 6 LPM

Description	Units per case	Item number
Without supply tubing	50	1057-0-50
7' supply tubing	50	1053-7-50
16' supply tubing	50	1063-16-50

Conventional-style cannulas with smooth-bore supply tubing for low flow volumes up to 6 LPM

Description	Units per case	Item number
7' supply tubing	50	1056-7-50
16' supply tubing	50	1068-16-50

Our most popular models are indicated by **Salter Green** throughout this catalog.

ADULT SPECIALTY CANNULAS

Cannulas with added comfort. Cannulas for very low oxygen flows, or very high. Or somewhere in between. Salter takes great pride in offering a wide range of options for home and hospital use. After all, no two patients are alike. And every treatment situation is unique.



4807TLC

Salter-Style® TLCannulas™

For relief of pressure above the ears by using soft, adjustable, closed-cell foam cushions for “over-the-ear” comfort and wearability.

Salter-Style TLCannulas with closed-cell foam cushions and 3-channel safety supply tubing for flow rates up to 6 LPM

Description	Units per case	Item number
Without supply tubing	25	1606TLC-0-25
1' supply tubing	25	1600TLC-1-25
4' supply tubing	25	1600TLC-4-25
7' supply tubing	25	1600TLC-7-25
7' supply tubing and female thread grip connector	25	1699TLC-7-25
14' supply tubing	25	1600TLC-14-25
15' supply tubing	25	1600TLC-15-25
21' supply tubing	25	1600TLC-21-25
25' supply tubing	25	1600TLC-25-25

Salter-Style TLCannulas with closed-cell foam cushions, 3-channel safety supply tubing, and Micro facepieces for flows up to 3 LPM

Description	Units per case	Item number
7' supply tubing	25	1616TLC-7-25

Salter-Style TLCannulas with closed-cell foam cushions, 3-channel safety supply tubing, and Quiet facepieces to virtually eliminate noise for flows up to 8 LPM

Description	Units per case	Item number
7' supply tubing	25	1600QTLC-7-25

Salter-Style TLCannulas with closed-cell foam cushions, smooth-bore supply tubing, and Demand facepieces for flows up to 6 LPM

Description	Units per case	Item number
4' supply tubing	25	4804TLC-4-4-25
7' supply tubing	25	4807TLC-7-7-25

Our most popular models are indicated by **Salter Green** throughout this catalog.

Micro Cannula

With a smaller facepiece for improved comfort and appearance for patients who only require flows up to 3 LPM.



1616

Micro cannulas with 3-channel safety tubing for low flow volumes up to 3 LPM

Description	Units per case	Item number
1' supply tubing	50	1616-1-50
4' supply tubing	50	1616-4-50
7' supply tubing	50	1616-7-50

Quiet Cannula

For oxygen flows up to 8 LPM and features a larger reservoir that virtually eliminates noise.



Salter-Style Quiet cannulas with noise-reducing facepiece and 3-channel safety tubing for flows up to 8 LPM

Description	Units per case	Item number
Without supply tubing	50	1606Q-0-50
4' supply tubing	50	1600Q-4-50
7' supply tubing	50	1600Q-7-50

Our most popular models are indicated by **Salter Green** throughout this catalog.

PEDIATRIC CANNULAS

It's not enough to take an adult cannula and just make it smaller. Salter pediatric cannulas are specifically designed for kids. Kids who like to squirm and aren't very happy with plastic tubing on their cheeks. With Salter, you can rest assured that every pediatric cannula has been "kid-tested" for comfort and convenience.



1610 Premature

Smaller Salter-Style® Cannulas

For oxygen flows up to 3 LPM and 6 LPM, and one-piece anatomical design for secure positioning as well as patient comfort and freedom.

Standard pediatric cannulas with Salter-Style curved facepiece and 3-channel safety supply tubing

Description	Units per case	Item number	Maximum LPM
Premature with 7' supply tubing	50	1610-7-50	3 LPM
Neonate with 7' supply tubing	50	1611-7-50	3 LPM
Infant with 4' supply tubing	50	1601-4-50	3 LPM
Infant with 7' supply tubing	50	1601-7-50	3 LPM
Intermediate infant with 7' supply tubing	50	1615-7-50	3 LPM
Pediatric without supply tubing	50	1662-0-50	6 LPM
Pediatric/small adult with 4' supply tubing	50	1602-4-50	6 LPM
Pediatric/small adult with 7' supply tubing	50	1602-7-50	6 LPM
Pediatric/small adult with 7' supply tubing and female thread grip connector	50	1602TG-7-50	6 LPM



1611 Neonate



1601 Infant



1602 Pediatric/small adult



1615 Intermediate infant



1662 Pediatric

Our most popular models are indicated by **Salter Green** throughout this catalog.

Smaller Salter-Style® Cannulas (continued)

You may also consider:

Description	Units per case	Item number
25' green oxygen supply tubing	25	2025G-25-25
50' green oxygen supply tubing	20	2050G-50-20
Swivel connector for attaching tubing and avoiding kinks	100	1220-0-100
Newborn Tender Grip® stickers for comfortably securing cannulas to skin	25	1007-0-25
Infant Tender Grip stickers for comfortably securing cannulas to skin	25	1008-0-25

Pediatric/Small adult cannulas with TLCannula ear cushions to relieve pressure above the ears and 3-channel safety tubing for low flows up to 6 LPM

Description	Units per case	Item number	Maximum LPM
7' supply tubing	25	1602TLC-7-25	6 LPM

Pediatric/Small adult cannulas with Quiet facepiece to virtually eliminate noise and 3-channel safety tubing for low flows up to 6 LPM

Description	Units per case	Item number	Maximum LPM
7' supply tubing	50	1601Q-7-50	6 LPM

Pediatric/Small adult Demand cannulas with Salter-Style facepieces and 3-channel safety tubing for low flows up to 6 LPM

Description	Units per case	Item number	Maximum LPM
4' supply tubing	25	4824-4-4-25	6 LPM
7' supply tubing	25	4827-7-7-25	6 LPM

CANNULA TUBING AND CONNECTORS



2025

Patient satisfaction doesn't start and stop with the cannula by itself. Salter design teams consider every aspect, especially the practical ones like mobility, safety, and appearance. So Salter offers innovations in tubing and connectors you'll find often imitated. But nothing compares to the original.

Oxygen Delivery Tubing

Salter's innovative 3-channel safety tubing is designed to maintain an uninterrupted flow of oxygen, including our patented tubing end fitting. But that's just the beginning of what Salter offers.

Oxygen supply tubing

Description	Units per case	Item number	Smooth-bore Clear	Safety channel Green
4' oxygen supply tubing	50	2004-4-50	—	—
7' oxygen supply tubing	50	2002-7-50	2503-7-50	2002G-7-50
9' oxygen supply tubing	50	2009-9-50	2509-9-50	—
10' oxygen supply tubing	50	2010-10-50	—	2010G-10-50
14' oxygen supply tubing	50	2014-14-50	2514-14-50	2014G-14-50
15' oxygen supply tubing	50	2015-15-50	—	2015G-15-50
20' oxygen supply tubing	25	2020-20-25	—	2020G-20-25
21' oxygen supply tubing	25	2021-21-25	2521-21-25	2021G-21-25
25' oxygen supply tubing	25	2025-25-25	2525-25-25	2025G-25-25
30' oxygen supply tubing	20	2030-30-20	2530-30-20	—
35' oxygen supply tubing	20	2035-35-20	—	2035G-35-20
40' oxygen supply tubing	20	2040-40-20	2540-40-20	2040G-40-20
50' oxygen supply tubing	20	2050-50-20	2550-50-20	2050G-50-20
100' oxygen supply tubing	10	2100-100-10	—	—



Oxygen supply tubing with thread grips

Description	Units per case	Item number
7' tubing with one molded connector end and one female thread grip end	50	2099-7-50
7' tubing with female thread grip on both ends	50	9997-7-50
7' tubing with one male thread grip end and one female thread grip end	50	9999-7-50

Oxygen Tubing Connectors

Where flexible configurations are needed and patient safety is a concern, Salter gives you several options.

1220



1225



1215



Swivel tubing connectors

Description	Units per case	Item number
Oxygen tubing swivel connector	25	1220-0-25
Oxygen tubing swivel connector	100	1220-0-100
Male/female swivel connector	25	1225-0-25

Supply Tubing Connectors With Clips

A simple, easy-to-use way to secure Salter tubing to bedding or clothing and reduce any pull or twisting. Adds to patient convenience and mobility, and is available in two versions.

Description	Units per case	Item number
Universal clip—for use with most fabrics	25	1221-0-25
Delicate clip—for use with delicate fabrics	25	1222-0-25

Standard tubing connectors

Description	Units per case	Item number
Oxygen tubing static connector	50	1215-0-50
2" oxygen tubing connector	50	2005-0-50

CANNULA SECUREMENT

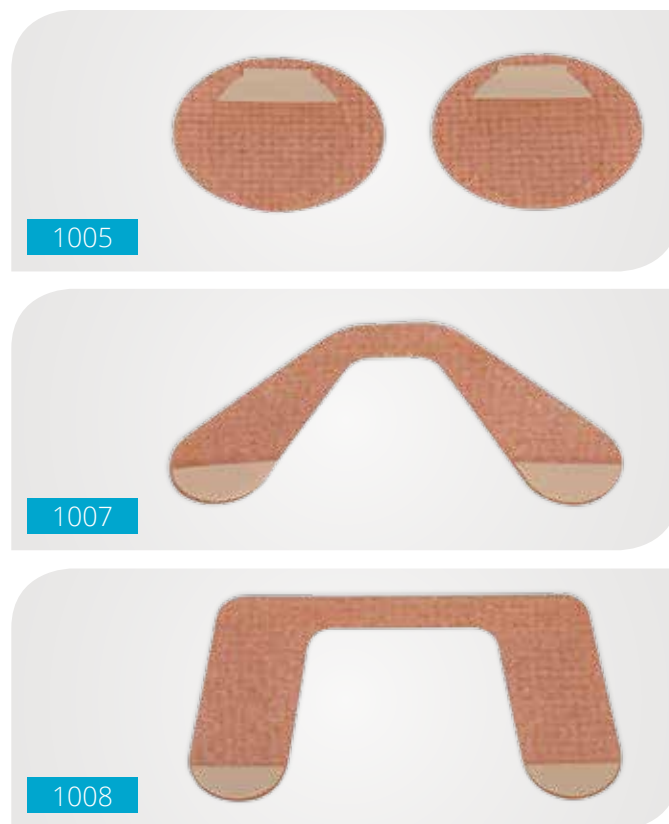


Time-consuming adjustments...
Patient complaints over comfort...
Inconvenient for home use...

You've heard all the comments. And so have we. So Salter introduced several add-on features to help address these situations. With patient satisfaction as our #1 goal, you may find these Salter products most helpful for many day-to-day concerns.

Tender Grip®

Designed to hold the Salter cannula head tubing and facepiece in position, this unique skin fixation system was developed for easy application and comfortable use. It allows the skin to breathe, leaving no messy residue, while being practically invisible.



Description	Units per case	Item number
Tender Grip® fixation system	25	1005-0-25
Tender Grip fixation system	100	1006-0-100
Tender Grip fixation system	25	1007-0-25
Tender Grip fixation system	25	1008-0-25

Hydrocolloid Strips

Pre-cut and ready to apply, Salter Labs Hydrocolloid Strips provide a cosmetically acceptable method of securement for a variety of healthcare uses. They leave no messy adhesive residue on skin or tubing and represent a cost-efficient, patient-friendly solution to many everyday healthcare needs.

Description	Units per case	Item number
Hydrocolloid strips, 2 per sheet	25	1217-0-25

HUMIDIFIERS AND WATER TRAPS



7900

For dependable, cost-effective performance, Salter humidifiers deliver a durable, disposable product that's ideal for use with all oxygen sources: concentrators, liquid, tanks, or wall outlets. Unique 360° rectangular diffusion ports offer quiet operation with improved hydration and less system back-pressure.

Standard Bubble Humidifiers

Available with either 3 PSI or 6 PSI pop-off alarms.

Description	Units per case	Item number
350 cc bubble humidifier 3 PSI (brown lid)	50	7100-0-50
350 cc bubble humidifier 6 PSI (black lid)	50	7600-0-50

High Flow Bubble Humidifier

Ideal for use with high-output oxygen concentrators, wall outlet source gas, or other applications where flow rates of 6 to 15 LPM are required and an audible pressure relief alert is desired. Effectively pairs with Salter 1600HF and 16SOFT-HF nasal cannulas.

Description	Units per case	Item number
High Flow 350 cc bubble humidifier (2-tone, beige and black lid)	25	7900-0-25

Humidifier Convenience Kits

Each kit includes humidifier and nasal cannula for simpler ordering and patient setup.

Description	Units per case	Item number (3 PSI)	Item number (6 to 15 LPM)
Kit with 7' soft cannula	25	—	79SOFT-7-25
Kit with 7' cannula	10	—	7907-7-10
Kit with 14' soft cannula	25	—	79SOFT-14-25
Kit with 25' cannula	20	7125-25-20	—
Kit with 25' soft cannula	10	—	79SOFT-25-10

Connector Tubing for Bubble Humidifiers

Crush resistant, 3-channel design provides confidence in uninterrupted oxygen flow. Tubing remains straight when uncoiled, allowing for greater comfort and convenience for the patient.

Description	Units per case	Item number
Concentrator humidifier adapter tubing: 1' supply tube with one molded trumpet connector end and one male thread grip end	25	9996-1-25
Concentrator humidifier adapter tubing: 15" supply tube with one molded ribbed connector end and one male thread grip end	50	SO-676
Concentrator humidifier adapter tubing: 21" supply tube with one molded ribbed connector end and one male thread grip end	50	SO-1790

Salter Inline Water Traps

A cost-effective solution for your long-term oxygen therapy patients: simple, durable construction, with design features that minimize the hazard of snagging on furniture or other obstructions.



Description	Units per case	Item number
Clear body with self-sealing end cap	25	7000-0-25
Clear body with threaded end cap	25	7001-0-25

SALTER OXYGEN MASKS

Salter oxygen masks offer several unique features that make them particularly useful across many situations: Salter 3-channel, crush-resistant safety tubing and secure, over-the-ear design combine for long-term durability and patient satisfaction in oxygen delivery.



8140TLC

ADULT OXYGEN MASKS

Salter masks offer 3 methods of attachment for a soft, anatomically shaped form to encourage patient use and acceptance. You'll see a difference.



8110TLC



8120



8130

Adult elongated medium concentration mask

Description	Units per case	Item number Elastic head strap style	Item number Elastic strap with TLC cushion	Item number Over-the-ear style
7' safety tubing	50/25	8110-7-50	8110TLC-7-25	8005-7-50
Without safety tubing	50	8115-0-50	—	8010-0-50

Elongated high-concentration partial-rebreathing mask

Description	Units per case	Item number Elastic head strap style	Item number Elastic strap with TLC cushion	Item number Over-the-ear style
Adult 7' safety tubing	50	8120-7-50	—	8020-7-50
Without safety tubing	50	8125-0-50	—	—

Elongated high-concentration non-rebreathing mask

Description	Units per case	Item number Elastic head strap style	Item number Elastic strap with TLC cushion	Item number Over-the-ear style
7' safety tubing and safety vent	50	8130-7-50	—	8030-7-50
Without safety tubing and with safety vent	50	8135-0-50	—	—
7' safety tubing and without safety vent	50/25	8140-7-50	8140TLC-7-25	8040-7-50
Without safety tubing and without safety vent	50	8145-0-50	—	8045-0-50

Our most popular models are indicated by **Salter Green** throughout this catalog.

PEDIATRIC OXYGEN MASKS

These Salter masks feature a soft, anatomical design that younger patients will find comfortable, especially for long-term use.



Infant medium-concentration mask

Description	Units per case	Item number Elastic head strap style
7' safety tubing	50	1114-7-50
Without safety tubing	50	1115-0-50

Pediatric medium-concentration mask

Description	Units per case	Item number Elastic head strap style
7' safety tubing	50	1122-7-50
Without safety tubing	50	1123-0-05



Pediatric high concentration partial-rebreathing mask

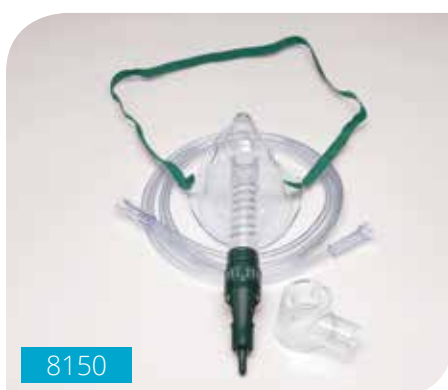
Description	Units per case	Item number Elastic head strap style
7' safety tubing	50	1127-7-50

Pediatric high-concentration non-rebreathing mask

Description	Units per case	Item number Elastic head strap style
7' safety tubing and safety vent	50	1130-7-50
7' safety tubing and without safety vent	50	1140-7-50

PERCENT-O₂-LOCK® VENTURI OXYGEN SYSTEM

These masks offer an easily adjustable, variable Venturi System delivering accurate concentrations of oxygen (24%, 26%, 28%, 31%, 35%, 40%, and 50%) from a single unit. Concentration levels are easily dialed and locked in place.



Description	Units per case	Item number Elastic head strap style	Item number Elastic strap with TLC cushion	Item number Over-the-ear style
Adult air entrainment system with humidity cup, 7' oxygen supply tube, and mask	50	8150-7-50	—	8050-7-50
Adult air entrainment system with humidity cup, 7' oxygen supply tube, and mask with TLC cushion	25	—	8150TLC-7-25	—
Adult trach tee air entrainment system with humidity cup and 7' oxygen supply tube	50	8054-7-50	—	—
Adult air entrainment assembly with humidity cup (without mask or oxygen supply tube)	50	8056-0-50	—	—
Adult air entrainment assembly without humidity cup, mask, or oxygen supply tube	50	8057-0-50	—	—
Adult air entrainment assembly with 7' oxygen supply tube and humidity cup (without mask)	50	8058-7-50	—	—
Adult air entrainment assembly with 7' oxygen supply tube (without mask or humidity cup)	50	8059-7-50	—	—
Pediatric air entrainment assembly with humidity cup, 7' oxygen supply tube, and pediatric mask	50	8121-7-50	—	—

ACCU-FLOW® VENTURI OXYGEN SYSTEM

These masks offer 5 accurate concentrations of oxygen (24%, 28%, 31%, 35%, and 40%) with 5 individual, color-coded diluter jets. Includes a durable plastic humidity cup.

Description	Units per case	Item number
Accu-Flow® air entrainment mask system with 5 diluter jets, 7' oxygen supply tube, and humidity cup	50	1050-7-50

Accu-Flow masks only (without any tubing)

Description	Units per case	Item number
24% mask	50	1046-0-50
35% mask	50	1048-0-50
40% mask	50	1049-0-50

Diluter jets

Description	Units per case	Item number
Humidity cup only	50	1077-0-50
Complete set: Diluter jets and humidity cup	50	1078-0-50

OXYGEN CONCENTRATION INDICATOR

PRO₂ Check Elite®: A Multifunction Indicator

All-in-one

- Oxygen percent of delivered gas
- Flow rate in LPM
- Output pressure in PSIG or kPa

A small hand-held unit, which delivers all three essential validation checks required to assure proper oxygen concentrator performance.

There's no need to carry a tool box full of test equipment to measure concentrator performance or spot check LOX systems anymore. With microprocessor logic and ultrasound technology—and one simple tubing connection—you'll be ready to go! It comes complete with a carrying case and a 9-volt pre-installed battery.

No calibration required

Minimal maintenance costs

- Factory-set electronic calibration
- If calibration or verification is required to meet company or local standards, it can be performed on-site in minutes with no special equipment
- DC powered with a single standard 9-volt battery and a "low batt" warning display
- Automatic power shutoff after five minutes
- No special tools required to replace battery

The PRO₂ Check Elite® Multifunction Oxygen Concentration Indicator is a welcome addition to care providers or repair technicians working with oxygen concentrators. In one compact battery operated instrument you have the ability to readily check three vital parameters of a concentrator's function.

The PRO₂ Check Elite uses logic designed to simply and accurately indicate delivery flow measures. It is not affected by normal temperature or elevation changes, and a verification check can be done in 10 seconds with one button. Annual operational costs are one or possibly two 9-volt batteries, depending on usage.

The carrying case has a clear plastic face to protect the unit from spills. Switches are a new membrane style, a low-profile design with no sharp edges to get caught or inadvertently triggered. And the PRO₂ Check Elite has a 2-year warranty.

CONCENTRATOR OXYGEN INDICATORS

Description	Units per case	Item number
PRO ₂ Check Elite Multifunction Concentrator Indicator complete in carrying case with belt clip and shoulder strap, 9-volt battery, and connecting tube	1	PRO2ELITE-1
PRO ₂ Check Ultrasonic Oxygen Indicator complete in carrying case with belt clip and shoulder strap, 9-volt battery, and connecting tube	1	PRO2-1

Physical data**Dimensions:** 3.60" W x 5.75" H x 1.29" D

(9.14 cm W x 14.61 cm H x 3.28 cm D)

Weight: 9 ounces (255.15 grams)**Connector:** (2) 1/4" anodized aluminum hose barbs**Case:** Solid color ABS plastic with threaded metal bolt channels**Response Time:** 10 seconds**Warm Up Time:** None required**Calibration Requirements:** None**Sensor:** None**Warranty:** 2 years**Battery**

Standard 9-volt

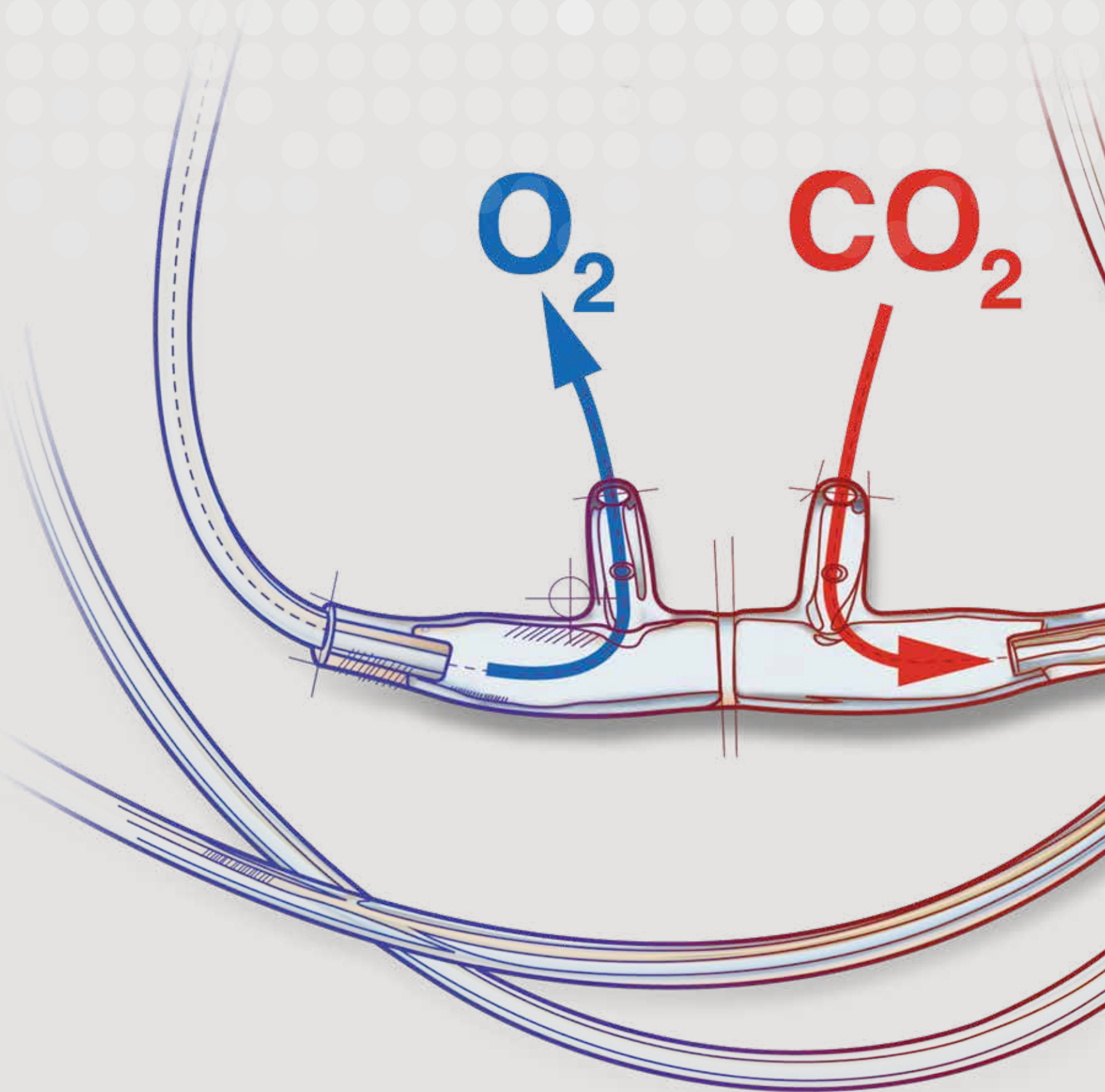
Operating Temperature

32°F to 105°F (0°C to 41°C)

Storage Temperature

-29°F to 160°F (-34°C to 71°C)

Specifications: Pressure Mode**Range:** 0 to 25 PSIG (0 to 172 kPa)**Resolution:** 0.1 PSIG (0.1 up to 99.9 kPa; 1.0 over 100 kPa)**Accuracy:** ± 1% of Full Scale**Specifications: Flow Mode****Range:** 0 to 10 LPM**Resolution:** 0.1 LPM**Accuracy:** ± .3 LPM**Sensor:** Ultrasonic**Specifications: Concentration Mode****Range:** 20.9% to 100%**Response time:** 10 seconds**Accuracy:** ± 2%**Linearity:** ± 2% Full Scale





CAPNOGRAPHY (EtCO₂)

Divided With O ₂ Delivery	B2
Sampling Without O ₂ Delivery	B8
Piggyback Sampling With O ₂ Delivery	B10
EtCO ₂ Sampling Lines	B11

DIVIDED CAPNOGRAPHY CANNULAS WITH O₂ DELIVERY



Monitoring of nonintubated patients for end-tidal CO₂ and other exhaled gases can be limited. One reason is that supplemental oxygen, delivered by mask or cannula, tends to dilute end-tidal gases and distort waveforms. But Salter's special capnography sampling cannulas permit an undiluted sample, even with simultaneous insufflation of oxygen or gaseous analgesia. This results in a waveform similar to that obtained with an intubated patient.

Divided Capnography Cannulas With Simultaneous Oxygen Delivery

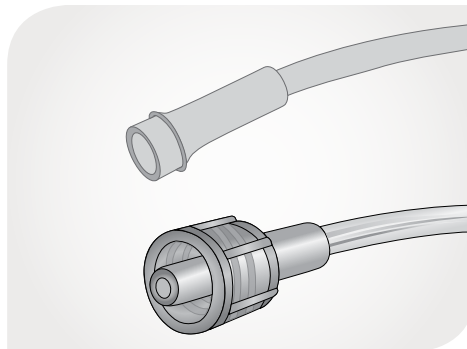
Salter design accommodates end-tidal sampling from one naris and oxygen or gaseous analgesia delivery to the other, and does not interfere with patient observation.

Salter capnography cannulas are available with multiple configurations compatible with a variety of capnography monitors and/or room configurations.

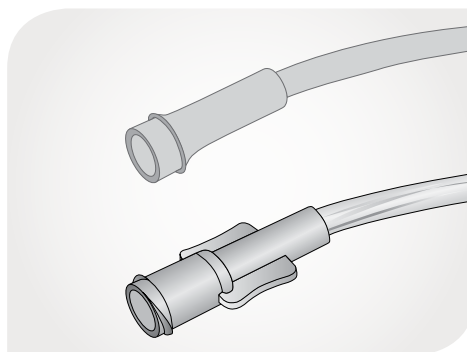
Connection type

Salter capnography cannulas are available for monitors with Luer-Lok® connectors

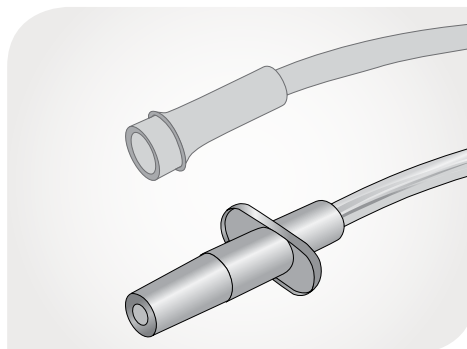
Male Luer-Lok connectors



Female Luer-Lok connectors



Male Luer-Slip connectors



Oral sampling

Salter capnography cannulas are available with an Oral-Trac® oral sampling line to enable sampling from mouth-breathing patients



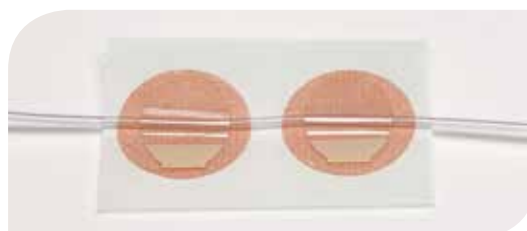
CO₂ filtration

Salter capnography cannulas are available with inline filtration to protect monitoring equipment from moisture



Tubing securement

Salter capnography cannulas are available with two Tender Grip® skin-fixation pads to secure tubing away from the operating site for ophthalmic or other procedures



Adult cannulas for monitors requiring male Luer-Lok® connectors

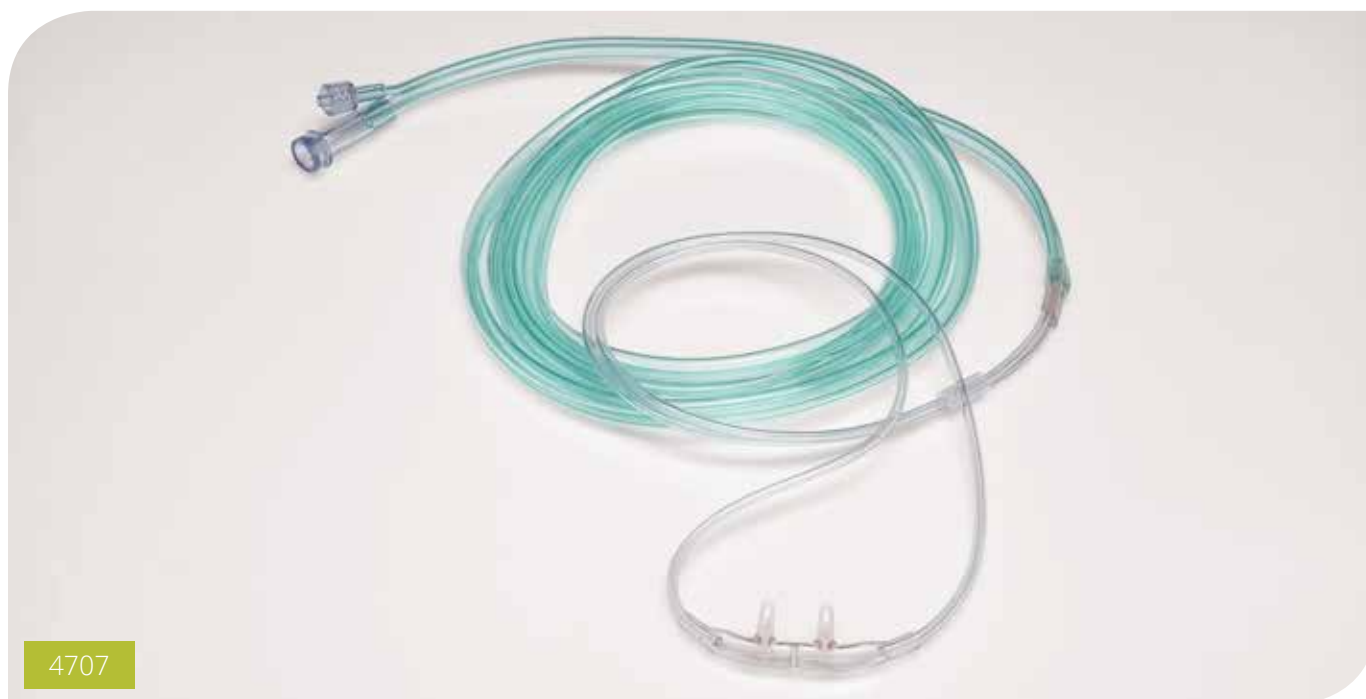
Oxygen delivery line length	Capnography sampling line length	Filter	Units per case	Item number
Standard divided cannulas				
7' O ₂ line	2" CO ₂ pigtail	No	25	4706-7-0-25
	2' CO ₂ line	Yes	25	4708-7-2-25
	7' CO ₂ line	No	25	4707-7-7-25
		Yes	25	4707SP-7-7-25
10' O ₂ line	10' CO ₂ line	No	25	4707-10-10-25
13' O ₂ line	13' CO ₂ line	No	25	4707-13-13-25
Divided cannulas with oral sampling				
7' O ₂ line	2" CO ₂ pigtail	No	25	4796-7-0-25
	7' CO ₂ line	No	25	4797-7-7-25
		Yes	25	4797SP-7-7-25
Divided cannula with Tender Grip pads				
7' O ₂ line	7' CO ₂ line	No	25	T4707-7-7-25



Adult cannulas for monitors requiring female Luer-Lok connectors

Oxygen delivery line length	Capnography sampling line length	Filter	Units per case	Item number
Standard divided cannulas				
7' O ₂ line	2" CO ₂ pigtail	No	25	4706F-7-0-25
	7' CO ₂ line	No	25	4707F-7-7-25
13' O ₂ line	13' CO ₂ line	No	25	4707F-13-13-25
Divided cannulas with oral sampling				
7' O ₂ line	2" CO ₂ pigtail	No	25	4796F-7-0-25
	7' CO ₂ line	No	25	4797F-7-7-25
Divided cannulas with Tender Grip pads				
7' O ₂ line	2" CO ₂ pigtail	No	25	T4706F-7-7-25
7' O ₂ line	7' CO ₂ line	No	25	T4707F-7-7-25

Our most popular models are indicated by **Salter Green** throughout this catalog.



4707

Adult cannulas for monitors requiring male Luer-Slip connectors

Oxygen delivery line length	Capnography sampling line length	Filter	Units per case	Item number
Standard divided cannula				
7' O ₂ line	2' CO ₂ line	Yes	25	4787-7-2-25

Other cannulas for monitors requiring male Luer-Lok connectors

Oxygen delivery line length	Capnography sampling line length	Cannula type	Units per case	Item number
Standard divided cannulas				
7' O ₂ line	2" CO ₂ pigtail	Infant	25	4701-7-0-25
		Intermediate infant	25	4705-7-0-25
		Pediatric	25	4702-7-0-25
	7' CO ₂ line	Infant	25	4700-7-7-25
		Intermediate infant	25	4704-7-7-25
		Pediatric	25	4703-7-7-25
Oral Sampling				
7' O ₂	7' CO ₂	Pediatric	25	4793-7-7-25

Pediatric cannulas for monitors requiring female Luer-Lok connectors

Oxygen delivery line length	Capnography sampling line length	Cannula type	Units per case	Item number
Standard divided cannulas				
7' O ₂ line	2" CO ₂ pigtail	Infant	25	4701F-7-0-25
		Intermediate infant	25	4705F-7-0-25
		Pediatric	25	4702F-7-0-25
	7' CO ₂ line	Infant	25	4700F-7-7-25
		Intermediate infant	25	4704F-7-7-25
7' O ₂ line	7' CO ₂ line	Pediatric	25	4703F-7-7-25
Divided cannula with oral sampling				
7' O ₂ line	7' CO ₂ line	Pediatric	25	4793F-7-7-25

Pediatric cannula for monitors requiring male Luer-Slip connectors

Oxygen delivery line length	Capnography sampling line length	Cannula type	Units per case	Item number
Standard divided cannula				
7' O ₂ line	2' CO ₂ line	Pediatric	25	4783-7-2-25

Capnography cannula accessories

Description	Units per case	Item number
Anesthesia circuit oxygen adapter, 22 mm I.D. x 6 mm O.D	25	1020-0-25

CAPNOGRAPHY SAMPLING CANNULAS WITHOUT OXYGEN DELIVERY

For CO₂ sampling during spontaneous breathing. Available in adult and pediatric sizes, with connector variations.

Adult cannulas for monitors requiring male Luer-Lok connectors

Capnography sampling line length	Filter	Units per case	Item number
7' CO₂ line	No	25	4000-7-25
7' CO ₂ line	Yes	25	4007-7-25

Adult cannulas for monitors requiring female Luer-Lok connectors

Capnography sampling line length	Filter	Units per case	Item number
7' CO₂ line	No	25	4000F-7-25

Adult cannulas for monitors requiring male Luer-Slip connectors

Capnography sampling line length	Filter	Units per case	Item number
2' CO ₂ line	No	25	4008-2-25

Pediatric cannulas for monitors requiring male Luer-Lok connectors

Capnography sampling line length	Cannula type	Units per case	Item number
7' CO ₂ line	Infant	25	4200-7-25
	Intermediate infant	25	4300-7-25
	Pediatric	25	4100-7-25

Pediatric cannulas for monitors requiring female Luer-Lok connectors

Capnography sampling line length	Cannula type	Units per case	Item number
7' CO ₂ line	Infant	25	4200F-7-25
	Intermediate infant	25	4300F-7-25
	Pediatric	25	4100F-7-25

Pediatric cannula for monitors requiring male Luer-Slip connectors

Capnography sampling line length	Cannula type	Units per case	Item number
2' CO ₂ line	Infant	25	4208-2-25

Capnography cannula accessories

Description	Units per case	Item number
Anesthesia circuit oxygen adapter, 22 mm I.D. x 6 mm O.D.	25	1020-0-25

PIGGYBACK CAPNOGRAPHY SAMPLING CANNULAS WITH OXYGEN DELIVERY

Piggyback design provides cost-effective simultaneous oxygen delivery and EtCO₂ sampling.



4002

Cannulas for monitors requiring male Luer-Lok connectors

Oxygen delivery line length	Capnography sampling line length	Filter	Units per case	Item number
Adult piggyback cannula				
7' O₂ line	7' CO₂ line	No	25	4002-7-7-25
Pediatric piggyback cannula				
7' O ₂ line	7' CO ₂ line	No	25	4102-7-7-25

Cannulas for monitors requiring female Luer-Lok connectors

Oxygen delivery line length	Capnography sampling line length	Filter	Units per case	Item number
Adult piggyback cannula				
7' O₂ line	7' CO₂ line	No	25	4002F-7-7-25
Pediatric piggyback cannula				
7' O ₂ line	7' CO ₂ line	No	25	4102F-7-7-25

EtCO₂ SAMPLING LINES

Salter gives you the opportunity to increase the length of the CO₂ line for increased adaptability in your chosen environment; internal diameter: .055 ± .005.

Connectors	Sampling line length	Units per case	Item number
Male to female	7' CO ₂ sampling	25	4407-7-25
	10' CO ₂ sampling	25	4410-10-25
	15' CO ₂ sampling	25	4415-15-25
	30' CO ₂ sampling	25	4430-30-25
Male to male	7' CO₂ sampling	25	4507-7-25
	10' CO₂ sampling	25	4510-10-25
	15' CO ₂ sampling	25	4515-15-25
	30' CO ₂ sampling	25	4530-30-25
Female to female	7' CO ₂ sampling	25	4607-7-25



AEROSOL DELIVERY

NebuTech® Nebulizers.....	C2
T-Piece Nebulizers.....	C5
Safety™ PEP.....	C8
Compressors.....	C10
Aerosol Masks.....	C12
Spacer Chambers.....	C15

NEBUTECH® NEBULIZERS

NebuTech® Small Volume Jet Nebulizers incorporate many innovative design features that help to increase the concentration of medication delivered per patient breath, with less waste than conventional nebulizers. Every breath counts when it comes to treatment-time management and patient satisfaction.

NebuTech patient-friendly add-on features provide a flexible and improved respiratory experience that is unique to each patient, and each patient environment, with unmatched ease of use. This respiratory experience:

- Covers multiple patient settings, options, and positions; for ED, acute care, ICU, EMS, and in-home therapy
- Offers optional mask, filter, and positive expiratory pressure (PEP) therapy
- Allows up to a 45-degree angle to accommodate changing postures or flat horizontal position
- Spans the continuum of care
 - Pediatrics to elderly
 - Hospital to home, which helps ensure better patient compliance with treatments
- Offers a filter option for RT protection from exhaled medications



Disposable NebuTech Nebulizers for Acute Care and Clinic Use

Disposable NebuTech nebulizers are intended for single-patient use for up to 7 days.



Disposable NebuTech nebulizers with mouthpiece interface

7' supply tube	Thread grip connector	Filter	Units per case	Item number
✓	—	—	50	8960-7-50
✓	—	✓	50	8982-7-50
✓	✓	—	50	8960TG-7-50
—	—	—	50	8961-0-50

Disposable NebuTech nebulizers with mask interface

7' supply tube	Thread grip connector	Mask type	Units per case	Item number
✓	—	Adult	50	8984-7-50
✓	—	Pediatric	50	8967-7-50

Reusable NebuTech Nebulizers With Mouthpiece Interface

Reusable NebuTech nebulizers are intended for patient use in the home environment for up to 6 months.

Reusable nebulizers with mouthpiece

7' supply tube	Thread grip connector	Filter	Units per case	Item number
✓	—	—	50	8660-7-50

Reusable Salter Safety™ PEP threshold PEP device for use with NebuTech

Description	Units per case	Item number
Safety™ PEP device and nose clip	25	1301-0-25

NebuTech accessories

Description	Units per case	Item number
Disposable NebuTech filter	25	8980-0-25
Reusable NebuTech filter	25	8680-0-25
Replacement filter pads	30	8685-0-1
Adult elongated mask without supply tube	50	8100-0-50
Pediatric aerosol mask without tube	50	1120-0-50

T-PIECE NEBULIZERS

Salter nebulizers are designed for patient satisfaction and improved performance in varied healthcare settings, such as the home or hospital. Whether disposable or reusable, Salter nebulizers are easy to assemble and disassemble, provide a leak-proof seal, and allow patients to be in a comfortable position for treatment.



8900

Small Volume Jet Nebulizers

Small volume jet nebulizers provide reliable and cost-effective aerosol therapy and feature an anti-drool "T" for extended, uncontaminated use. Each kit offers ready-to-use access with various accessories:

- Supply tubing
- Reservoir tube
- T-connector
- Mouthpiece
- Pediatric mask
- Adult mask
- Thread grip connector



T-piece nebulizers with mouthpieces for spontaneously breathing patients

7' supply tube	Thread grip connector	Nebulizer	6" reservoir tube	Units per case	Item number
✓	—	✓	✓	50	8900-7-50
✓	✓	✓	✓	50	8900TG-7-50
—	—	✓	—	50	8901-0-50
✓	—	✓	—	50	8902-7-50
—	—	✓	—	50	8913-0-50
✓	—	✓	—	50	8911-7-50
—	—	✓	✓	50	8912-0-50

T-piece nebulizers with inline connectors for ventilated patients

7' Supply tube	6" reservoir tube	Inline T-connector Dimensions: 22 mm OD x 22 mm OD x 18 mm ID	Units per case	Item number
✓	✓	✓	50	8915-7-50

ID = Inner Diameter, OD = Outer Diameter

T-piece nebulizers with masks for spontaneously-breathing patients

7' Supply tube	Mask type	Units per case	Item number
—	Adult	50	8923-0-50
✓	Adult	50	8924-7-50
—	Pediatric	50	8905-0-50
✓	Pediatric	—	8906-7-50

T-piece nebulizer accessories

Description	Units per case	Item number
Adult elongated mask without supply tube	50	8100-0-50
Pediatric aerosol mask without supply tube	50	1120-0-50

SAFETY™ PEP

A Salter Safety™ PEP device allows you to use any Salter NebuTech jet nebulizer for simultaneous aerosol delivery and positive expiratory pressure (PEP) therapy regimens. Easy-to-read resistance settings make for quick and sure adjustments to maximize therapy.



Description	Units per case	Item number
Safety PEP device and nose clip	25	1301-0-25
Safety PEP device and nose clip with disposable NebuTech	25	8960-PEP-7-25

Salter Filter Sets for NebuTech Nebulizers

These filter sets are designed to work with NebuTech mouthpieces and filter out 99.56% of exhaled particles. The unit is easy to mount and install, and the reusable model is dishwasher safe ("top shelf") and may be autoclaved or hand washed.

Reusable filter sets—for NebuTech

Description	Units per case	Item number
Reusable NebuTech filter	25	8680-0-25
Replacement filter pads—30 per bag	1	8685-0-1

Disposable filter sets—for NebuTech

Description	Units per case	Item number
Disposable NebuTech filter	25	8980-0-25
Disposable NebuTech nebulizer with mouthpiece, 7' supply tube, and filter	50	8982-7-50

COMPRESSORS

Salter AIRE Elite™ Compressors

These compressors are designed for efficient, quick, and convenient delivery of aerosolized medication. They're lightweight, quiet, and portable, with 2 voltage choices, and paired with either the Salter NebuTech or Salter 8900 T-Piece Small Volume Jet Nebulizer. Each unit is durable, reliable, and easy to use.

All compressor kits are packaged one unit per case.



8350-8660-7-1

Salter AIRE Elite—115V

Description	Nebulizer included	Item number
Compressor with T-piece nebulizer and mouthpiece	8900 T-Piece with mouthpiece, 6" reservoir, and 7' supply tubing	8350-8900-7-1
Compressor with T-piece nebulizer, mouthpiece, and carrying bag	8900 T-Piece with mouthpiece, 6" reservoir, and 7' supply tubing	8350B-8900-7-1
Compressor with nebulizer and pediatric mask	8906 nebulizer, 7' supply tubing, and pediatric mask	8350-8906-7-1
Compressor with NebuTech reusable nebulizer with 7' tubing	NebuTech reusable nebulizer with mouthpiece and 7' supply tubing	8350-8660-7-1

Salter AIRE Elite—230V

Description	Nebulizer included	European model item number ¹	United Kingdom model item number ²
Compressor with T-piece nebulizer and mouthpiece	8900 T-Piece with mouthpiece, 6" reservoir, and 7' supply tubing	8352-8900-7-1	—
Compressor with T-piece nebulizer and adult mask	8924 nebulizer, 7' supply tubing, and adult mask	8352-8924-7-1	8353-8924-7-1
Compressor with NebuTech reusable nebulizer	NebuTech reusable nebulizer with mouthpiece and 7' supply tubing	8352-8660-7-1	—
Compressor with NebuTech disposable nebulizer and mask	NebuTech disposable nebulizer with adult mask and 7' supply tubing	8352-8984-7-1	—

Accessories for both compressor options

Compressor carrying bag	—	—	8258-0-1
Replacement air filters, 2 per package	—	—	8501-1-2

¹220V European model with CEE 7/16 ungrounded plug²220V United Kingdom model with BS 1363 ungrounded plug

AEROSOL MASKS

Salter Aerosol Therapy Masks

These masks offer 2 modes of attachment: the traditional elastic-strap style and Salter's exclusive over-the-ear style. Both are designed for secure positioning and patient comfort. Salter gives you the choice. Long-term users and edentulous patients find them both wearable, and soft, feathered edges add to their comfort.



Over-the-ear style

Description	Units per case	Item number
Adult elongated mask without supply tube	50	8000-0-50

Elastic head strap style

Description	Units per case	Item number
Adult elongated mask without supply tube	50	8100-0-50
Adult extra-large mask without tube	50	1100-0-50
Adult valved, elongated mask without tube	50	8107V-0-50
Infant aerosol mask without tube	10 or 50	1113-0-10 1113-0-50
Pediatric valved, elongated mask (no connecting tube or nebulizer)	10 or 50	1107-0-10 1107-0-50
Pediatric aerosol mask without tube	50	1120-0-50

Salter Nebulizer and Valved Mask Kits

These kits combine Salter jet nebulizers with specially designed and constructed therapy masks to diminish aerosolized medication spray from the patient's face. The assembly offers an easy, secure connection between the mask and nebulizer, convenient for caregiver applications. Model options include Directional Flow Valves (VADS) or Micro Vented Ports (MVP).

Adult		
Description	Units per case	Item number
8900 disposable T-Piece nebulizer and adult aerosol MVP mask with elastic headstrap and 7' supply tube	50	8927-7-50
NebuTech disposable nebulizer and adult aerosol VADS mask with elastic headstrap and 7' supply tube	50	8987-7-50

Pediatric		
Description	Units per case	Item number
8900 disposable T-Piece nebulizer and pediatric aerosol VADS mask with elastic headstrap and 7' supply tube	50	8907-7-50
NebuTech disposable nebulizer and pediatric aerosol VADS mask with elastic headstrap and 7' supply tube	50	8967-7-50

Salter Aerosol Therapy Face Tents

These face tents provide an oxygen-rich and aerosol-rich environment. Clear, soft material with a behind-the-neck strap ensures a comfortable, secure fit.



Description	Units per case	Item number
Adult comfort face tent (without tubing)	50	1110-0-50
Adult comfort face tent with 42" aerosol tube	50	1111-0-50
Adult comfort face tent with 72" aerosol tube	50	1112-6-50

SPACER CHAMBERS

A compact valved chamber for enhancing medication delivery to patients with treatment regimens using a metered-dose inhaler (MDI). Uni-body construction is durable and easy to clean. Unique whistle alarm alerts patients when optimum inspiratory rate is exceeded.

Description	Units per case	Item number
Pocket Chamber® valved holding chamber for MDI	50	1240-0-50



PRODUCT INDEX BY ITEM NUMBER

Item number	Page number
1005-0-25	A24
1006-0-100	A24, A5, A7
1007-0-25	A24, A18
1008-0-25	A24, A18
1020-0-25	B7, B9
1046-0-50	A33
1048-0-50	A33
1049-0-50	A33
1050-7-50	A33
1053-7-50	A11
1056-7-50	A11
1057-0-50	A11
1063-16-50	A11
1068-16-50	A11
1077-0-50	A33
1078-0-50	A33
1100-0-50	C13
1107-0-10	C13
1107-0-50	C13
1110-0-50	C14
1111-0-50	C14
1112-6-50	C14
1113-0-10	C13
1113-0-50	C13
1114-7-50	A30
1115-0-50	A30
1120-0-50	C13, C4, C7
1122-7-50	A30
1123-0-50	A30
1127-7-50	A31
1130-7-50	A31
1140-7-50	A31
1215-0-50	A22
1217-0-25	A24
1220-0-100	A22, A7, A18
1220-0-25	A22, A5
1221-0-25	A22
1222-0-25	A22
1225-0-25	A22
1240-0-50	C15
1301-0-25	C8, C4

Item number	Page number
1600-1-50	A6
1600-10-50	A6
1600-12-50	A6
1600-13-50	A6
1600-14-50	A6
1600-15-50	A6
1600-16-50	A6
1600-20-25	A6
1600-21-25	A6
1600-24-25	A6
1600-25-25	A6
1600-30-20	A6
1600-35-20	A6
1600-4-50	A6
1600-40-20	A6
1600-50-20	A6
1600-7-50	A6
1600-9-50	A6
1600HF-14-25	A10
1600HF-25-10	A10
1600HF-4-25	A10
1600HF-50-10	A10
1600HF-7-25	A10
1600Q-4-50	A15
1600Q-7-50	A15
1600QTLC-7-25	A13
1600TLC-1-25	A13
1600TLC-14-25	A13
1600TLC-15-25	A13
1600TLC-21-25	A13
1600TLC-25-25	A13
1600TLC-4-25	A7
1600TLC-4-25	A13
1600TLC-7-25	A13, A7
1601-4-50	A17
1601-7-50	A17
1601Q-7-50	A18
1602-4-50	A17
1602-7-50	A17
1602TG-7-50	A17
1602TLC-7-25	A18

Item number	Page number
1606-0-50	A6
1606B-0-50	A6
1606Q-0-50	A15
1606TLC-0-25	A13
1610-7-50	A17
1611-7-50	A17
1615-7-50	A17
1616-1-50	A14
1616-4-50	A14
1616-7-50	A14
1616TLC-7-25	A13
1650-4-50	A8
1650-7-50	A8
1650-10-50	A8
1650-14-50	A8
1650-25-25	A8
1650-50-20	A8
1662-0-50	A17
1699-7-50	A6
1699TLC-7-25	A13
16SOFT-0-50	A5
16SOFT-4-50	A5
16SOFT-7-50	A5
16SOFT-14-50	A5
16SOFT-25-25	A5
16SOFT-HF-7-25	A10, A5
16SOFT-HF-14-25	A5
16SOFT-HF-25-10	A5
2002-7-50	A20
2002G-7-50	A20
2004-4-50	A20
2005-0-50	A22
2009-9-50	A20
2010-10-50	A20
2010G-10-50	A20
2014-14-50	A20
2014G-14-50	A20
2015-15-50	A20
2015G-15-50	A20
2020-20-25	A20
2020G-20-25	A20

Item number	Page number
2021-21-25	A20
2021G-21-25	A20
2025G-25-25	A20, A5, A7, A18
2030-30-20	A20
2035-35-20	A20
2035G-35-20	A20
2040-40-20	A20
2040G-40-20	A20
2050-50-20	A20
2050G-50-20	A20, A7, A18
2099-7-50	A21
2100-100-10	A20
2503-7-50	A20
2509-9-50	A20
2514-14-50	A20
2521-21-25	A20
2525-25-25	A20
2530-30-20	A20
2540-40-20	A20
2550-50-20	A20
4000F-7-25	B8
4000-7-25	B8
4002-7-7-25	B10
4002F-7-7-25	B11
4007-7-25	B8
4008-2-25	B8
4100F-7-25	B9
4100-7-25	B9
4102-7-7-25	B10
4102F-7-7-25	B11
4200F-7-25	B9
4200-7-25	B9
4208-2-25	B9
4300F-7-25	B9
4300-7-25	B9
4407-7-25	B11
4410-10-25	B11
4415-15-25	B11
4430-30-25	B11
4507-7-25	B11
4510-10-25	B11

Item number	Page number
4515-15-25	B11
4530-30-25	B11
4607-7-25	B11
4700-7-7-25	B6
4700F-7-7-25	B7
4701-7-0-25	B6
4701F-7-0-25	B7
4702-7-0-25	B6
4702F-7-0-25	B7
4703-7-7-25	B6
4703F-7-7-25	B7
4704-7-7-25	B6
4704F-7-7-25	B7
4705-7-0-25	B6
4705F-7-0-25	B7
4706-7-0-25	B4
4706F-7-0-25	B5
4707-10-10-25	B4
4707-13-13-25	B4
4707-7-7-25	B4
4707F-13-13-25	B5
4707F-7-7-25	B5
4707SP-7-7-25	B4
4708-7-2-25	B4
4783-7-2-25	B7
4787-7-2-25	B6
4793-7-7-25	B6
4793F-7-7-25	B7
4796-7-0-25	B4
4796F-7-0-25	B5
4797-7-7-25	B4
4797F-7-7-25	B5
4797SP-7-7-25	B4
4804-4-4-25	A9
4804TLC-4-4-25	A13
4805-5-5-25	A9
4807-7-7-25	A9
4807TLC-7-7-25	A13
4824-4-4-25	A18
4827-7-7-25	A18
4904-4-4-25	A9

Item number	Page number
4905-5-5-25	A9
4907-7-7-25	A9
7000-0-25	A27
7001-0-25	A27
7100-0-50	A26
7125-25-20	A26
7600-0-50	A26
7900-0-25	A26, A10
7907-7-10	A26
79SOFT-14-25	A26
79SOFT-25-10	A26
79SOFT-7-25	A10
79SOFT-7-25	A26
8000-0-50	C13
8005-7-50	A29
8010-0-50	A29
8020-7-50	A29
8030-7-50	A29
8040-7-50	A29
8045-0-50	A29
8050-7-50	A32
8054-7-50	A32
8056-0-50	A32
8057-0-50	A32
8058-7-50	A32
8059-7-50	A32
8100-0-50	C13, C4, C7
8107V-0-50	C13
8110-7-50	A29
8110TLC-7-25	A29
8115-0-50	A29
8120-7-50	A29
8121-7-50	A32
8125-0-50	A29
8130-7-50	A29
8135-0-50	A29
8140-7-50	A29
8140TLC-7-25	A29
8145-0-50	A29
8150-7-50	A32
8150TLC-7-25	A32

Item number	Page number
8258-0-1	C11
8350-8660-7-1	C10
8350-8900-7-1	C10
8350-8906-7-1	C10
8350B-8900-7-1	C10
8352-8660-7-1	C11
8352-8900-7-1	C11
8352-8924-7-1	C11
8352-8984-7-1	C11
8353-8924-7-1	C11
8501-1-2	C11
8660-7-50	C4
8680-0-25	C9, C4
8685-0-1	C9, C4
8900-7-50	C6
8900TG-7-50	C6
8901-0-50	C6
8902-7-50	C6
8905-0-50	C7
8906-7-50	C7
8907-7-50	C14
8911-7-50	C6
8912-0-50	C6
8913-0-50	C6
8915-7-50	C7
8923-0-50	C7
8924-7-50	C7
8927-7-50	C14
8960-7-50	C3
8960-PEP-7-25	C8
8960TG-7-50	C3
8961-0-50	C3
8967-7-50	C3, C14
8980-0-25	C9, C4
8982-7-50	C9, C3
8984-7-50	C3
8987-7-50	C14
9996-1-25	A27
9997-7-50	A21
9999-7-50	A21
PRO2-1	A35

Item number	Page number
PRO2ELITE-1	A35
SO-1790	A27
SO-676	A27
T4706F-7-7-25	B5
T4707-7-7-25	B4
T4707F-7-7-25	B5

DISTINCT PRODUCTS EXPERIENCES THAT MATTER

 **SALTER LABS®**
DESIGN INNOVATIONS
FOR RESPIRATORY CARE



For more information or to place an order call:

1-800-235-4203 or 1-800-421-0024

FAX: 661-854-3850 or 1-800-628-4690

salterlabs.com