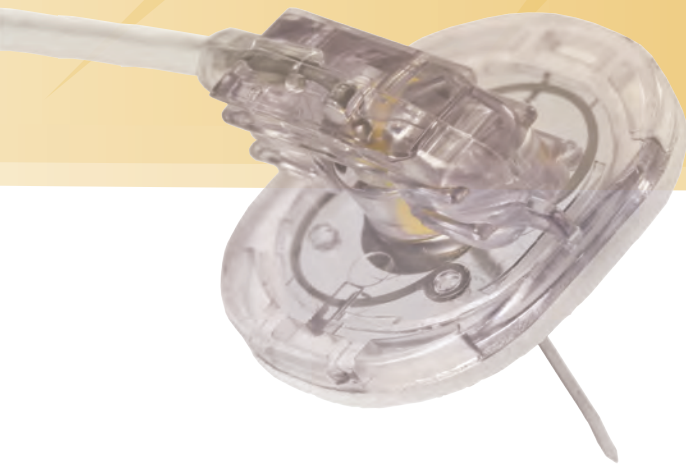


# SafeStep\*

HUBER NEEDLE SET

## SafeStep\* Huber Needle Set Informational Wall Chart

**BARD**  
ACCESS SYSTEMS



### Indications For Use:

The SafeStep\* Huber Needle Set is a device intended for insertion into the septum of subcutaneously implanted ports and infusion of fluids into the port. The SafeStep\* Huber Needle safety feature is manually activated during needle removal, and is designed to aid in the prevention of accidental needle sticks.

### Warnings:

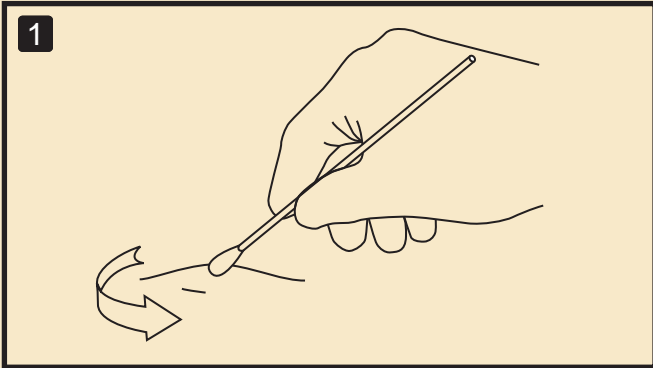
- Fully tighten all connectors, Y-site end caps, or needleless connectors before use. Failure to attach an end cap after removing a male Luer locking end cap can result in an air embolism or bleeding.
- This is a single-use product. DO NOT REUSE. DO NOT RESTERILIZE.
- Failure to use this device correctly when removing needle from port site could result in the needle tip re-emerging from the base, resulting in an accidental needlestick with a contaminated needle. A needlestick with a contaminated needle may cause infectious disease.
- Verify needle length is correct based on port reservoir depth, tissue thickness, and the thickness of any dressing beneath the bend of the needle; if too long, needle and/or port may be damaged at insertion; if too short, needle may not completely pierce port septum, and medication may be delivered into surrounding tissue and/or needle may be blocked.
- Handle and discard in accordance with accepted medical practice and all applicable regulations. After use, this product is a potential biohazard.
- Do not alter this device.
- Needleless Y-injection site valve may leak slightly at certain pressures resulting in a small bead of fluid on the valve.
- The textured handle and base are not connected. The base will move along the length of the needle.

### Cautions:

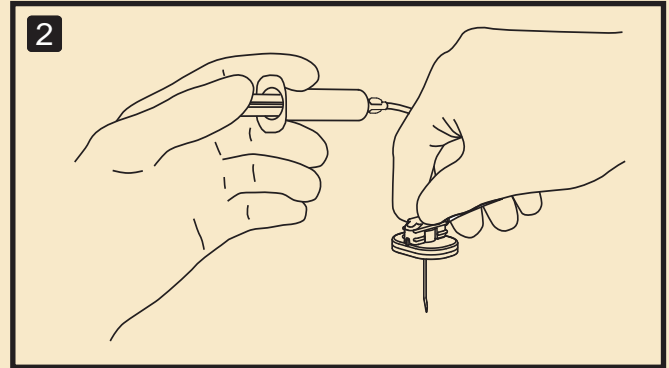
- Carefully read and follow all instructions prior to use.
- Care must be taken to avoid accidental needlesticks.
- Only qualified healthcare practitioners should insert, manipulate and remove these devices.
- High pressure or use with power injectors may cause leakage or damage.
- Confirm correct needle placement in the port reservoir by aspiration of blood before infusion of any substance. If there is doubt regarding proper needle placement, preform a radiographic dye procedure to confirm placement per institutional protocol.
- Do not remove and reinsert the needle into the port.
- Avoid excessive manipulation once the needle is in the port.
- Follow all instructions, contraindications, warnings, cautions and precautions for all infusates, ports, IV pumps, IV sets and needleless systems, as specified by the respective manufacturer.
- Follow standard infection control precautions as specified by the CDC (USA) or local equivalent.
- Do not use this product if it appears damaged or if the package has been previously opened or damaged.
- Do not access the needleless Y-injection site valve with a needle. Valve puncture may result in an embolism.



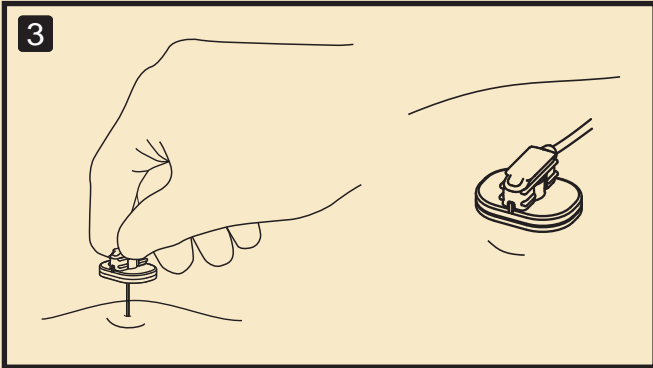
Carefully read and understand the Instructions For Use before using this device.  
Fully tighten all connections before use.



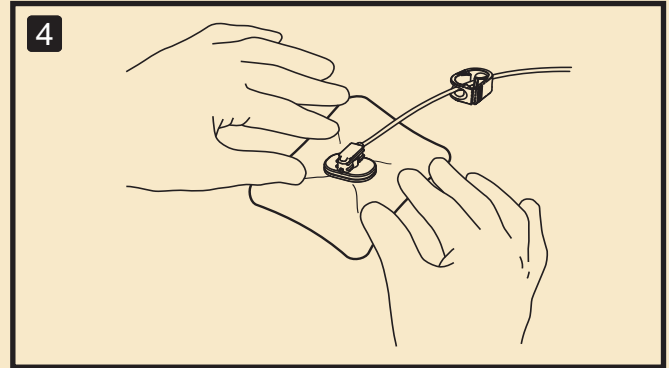
1 Prepare port site for sterile needle insertion.



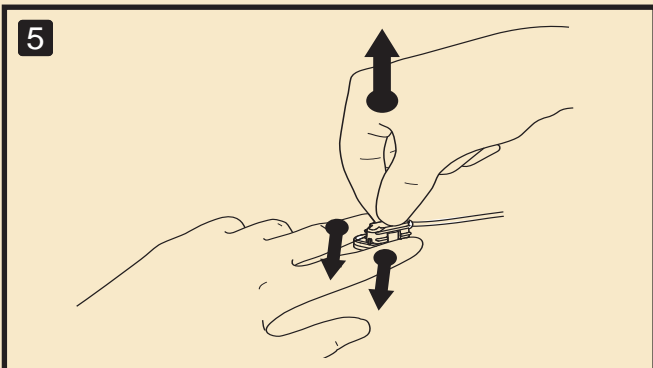
2 Attach a 10 cc syringe containing normal saline to the proximal Luer lock connection of the safety Huber needle infusion set. Grasp the textured handle and remove the needle cover. Prime and flush the infusion set.



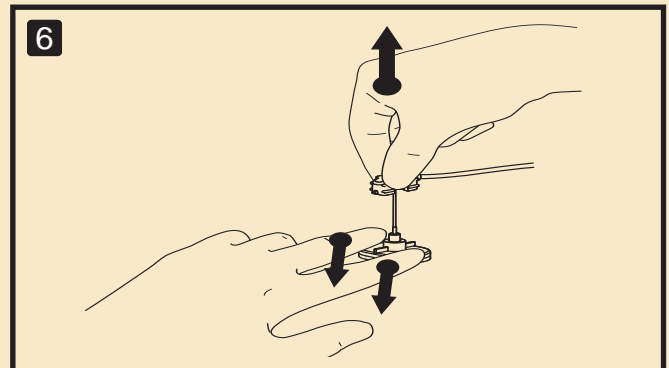
3 **Access:** Insert needle perpendicular into the port septum. Note: the textured handle and base are not connected. You may position the base on the skin as needed.



4 Verify patency. Dress and secure site per institutional protocol. Begin injection, infusion, or blood aspiration per institutional procedure.



5 **Deaccess:** After therapy completion, flush port per institutional protocol. Close the clamp while injecting the last 0.5 cc of solution. Stabilize the port by **securely holding** the base down.



6 **Firmly pull** the textured handle up until you feel a firm stop **and the needle is locked in the safety position**. Dispose of set in a sharps container.