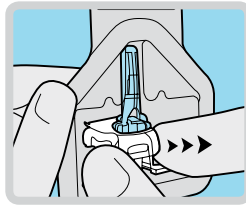
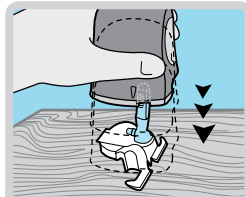


Part 1. Inserting a new Sensor

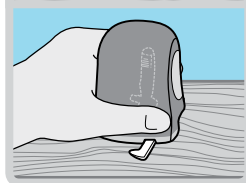
1. Hold sensor by pedestal and place on table.



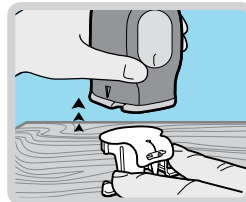
2. To load serter, push serter all the way down onto sensor and pedestal until serter sits on table.



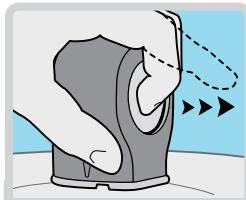
Be careful not to force serter too hard onto sensor/pedestal or it may not load properly.



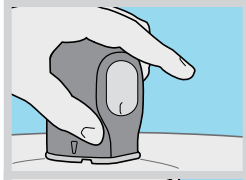
3. To remove pedestal, place two fingers on pedestal arms and pull serter straight up.



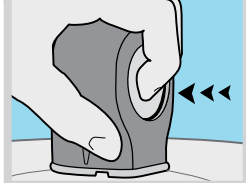
4. To insert sensor, press green button in and release it.



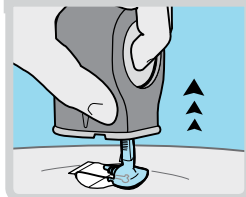
Hold serter against body and wait 5 seconds to allow time for pressure-sensitive adhesive to stick to skin.



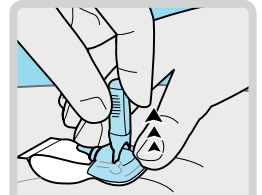
Press and **hold in** green button.



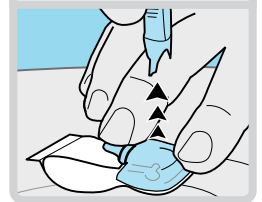
While continuing to hold in green button, slowly lift serter away from your body.



5. With one hand, hold sensor against your body. With other hand, hold needle housing at the tip.

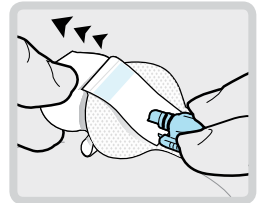


Pull needle housing straight out.

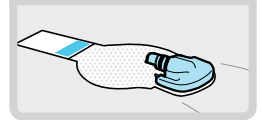
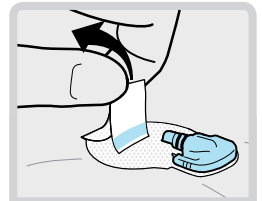


Warning: If bleeding occurs at sensor site (under/around/or on top of sensor), apply steady pressure using sterile gauze or clean cloth placed on top of sensor for up to three minutes. If bleeding does not stop, then remove sensor and apply steady pressure until bleeding stops.

6. Remove white paper underneath curved adhesive pad. **Press entire adhesive to skin for several seconds.**

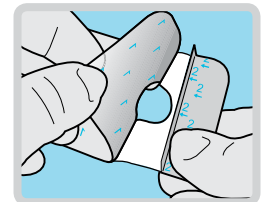


7. Flip adhesive tab so it lies flat, but do not remove paper backing yet.

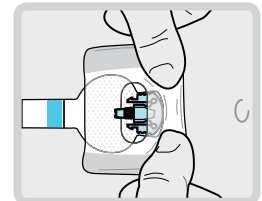


Part 2. Taping the Sensor

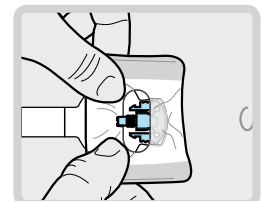
1. Remove large paper backing from overtape. Do not remove two smaller paper tabs on sides of overtape.



2. **Important: Attach overtape to both rounded part of sensor and skin in front of sensor.**

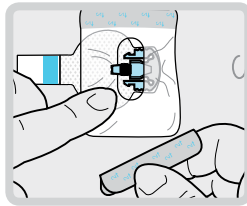


3. Apply rest of overtape, but do not block sensor connector with overtape. **Press overtape to your skin for several seconds.**

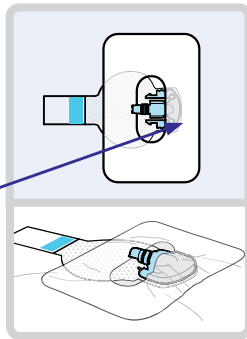


Taping the Sensor cont.

- Remove two paper tabs from sides of overtape. Press overtape against skin.



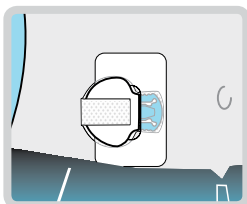
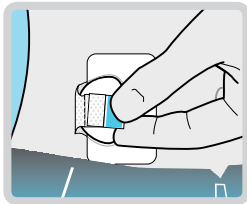
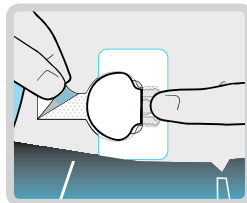
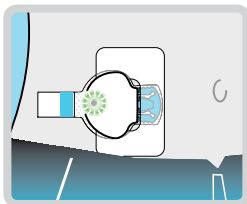
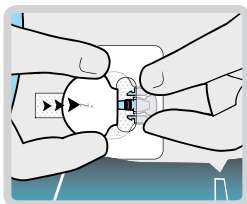
These images are examples of overtape applied correctly.



Overtape covers both sensor and skin

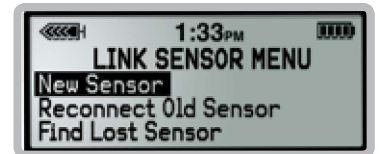
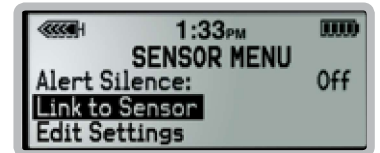
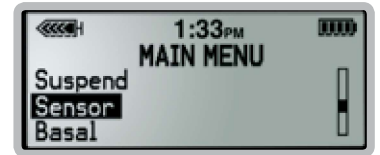
Part 3. Connecting the Transmitter

- With one hand, hold sensor in place. With other hand, connect transmitter to sensor.
- You will hear a faint "click" when the two components are connected. Check for green light to flash on transmitter.
- Remove paper on adhesive tab.
- Fold adhesive tab over transmitter. **Important: Be careful not to pull adhesive tab too tightly.**
- Press adhesive onto transmitter.



Part 4. Initializing the Sensor

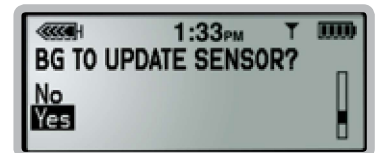
- From Home Screen, press **ACT** to open Main Menu.
- Scroll to Sensor and press **ACT**.
- Scroll to Link to Sensor and press **ACT**.
- Press **ACT** to select New Sensor
- You will see a message that your sensor will be ready in 2 hours.



Part 5. Calibrating

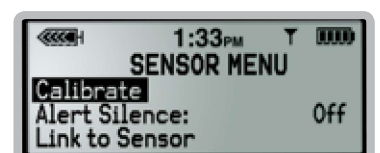
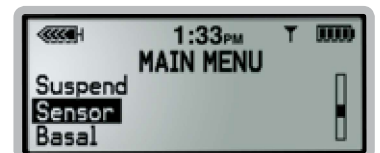
Two hours after sensor has started, "METER BG NOW" alert will notify you for first calibration. **There are two ways to calibrate:**

- Press **ⓅB** button
- Enter BG meter value
- You will receive message "BG to update sensor?" Select "yes" and press **ACT**.



****If you are using linked meter, your BG meter value will automatically appear on pump screen. Then follow step 3 above.**

- From Home Screen, press **ACT** to open Main Menu.
- Scroll to the Sensor menu and press **ACT**.
- Press **ACT** to select Calibrate (You will only see option to Calibrate if sensor and transmitter are connected and sensor is ready for first calibration).



Note: Calibrating through Sensor Menu can only occur if pump's insulin delivery is not suspended.