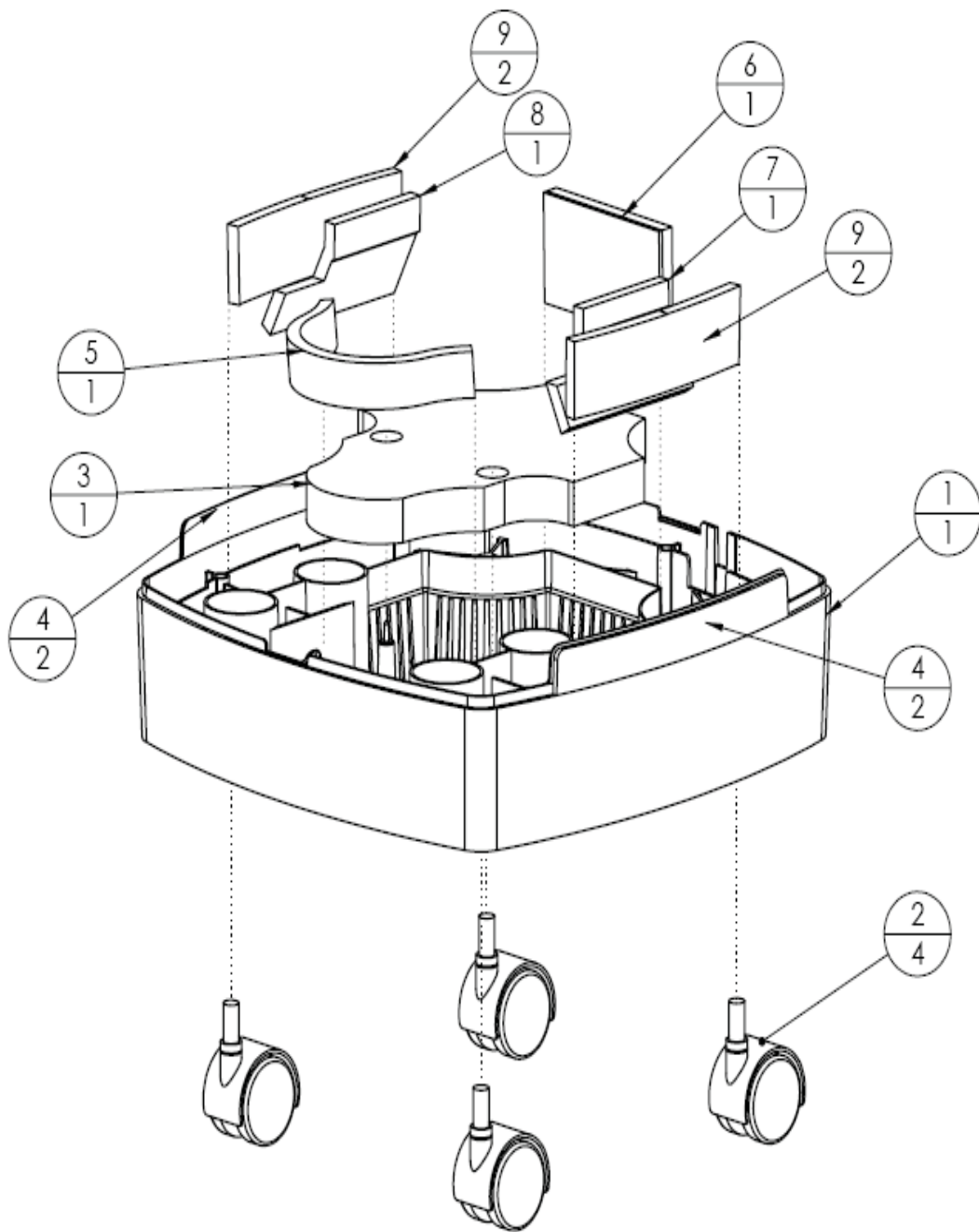


A-1 BASE ASSEMBLY

NUVO 0100-0300 REV A

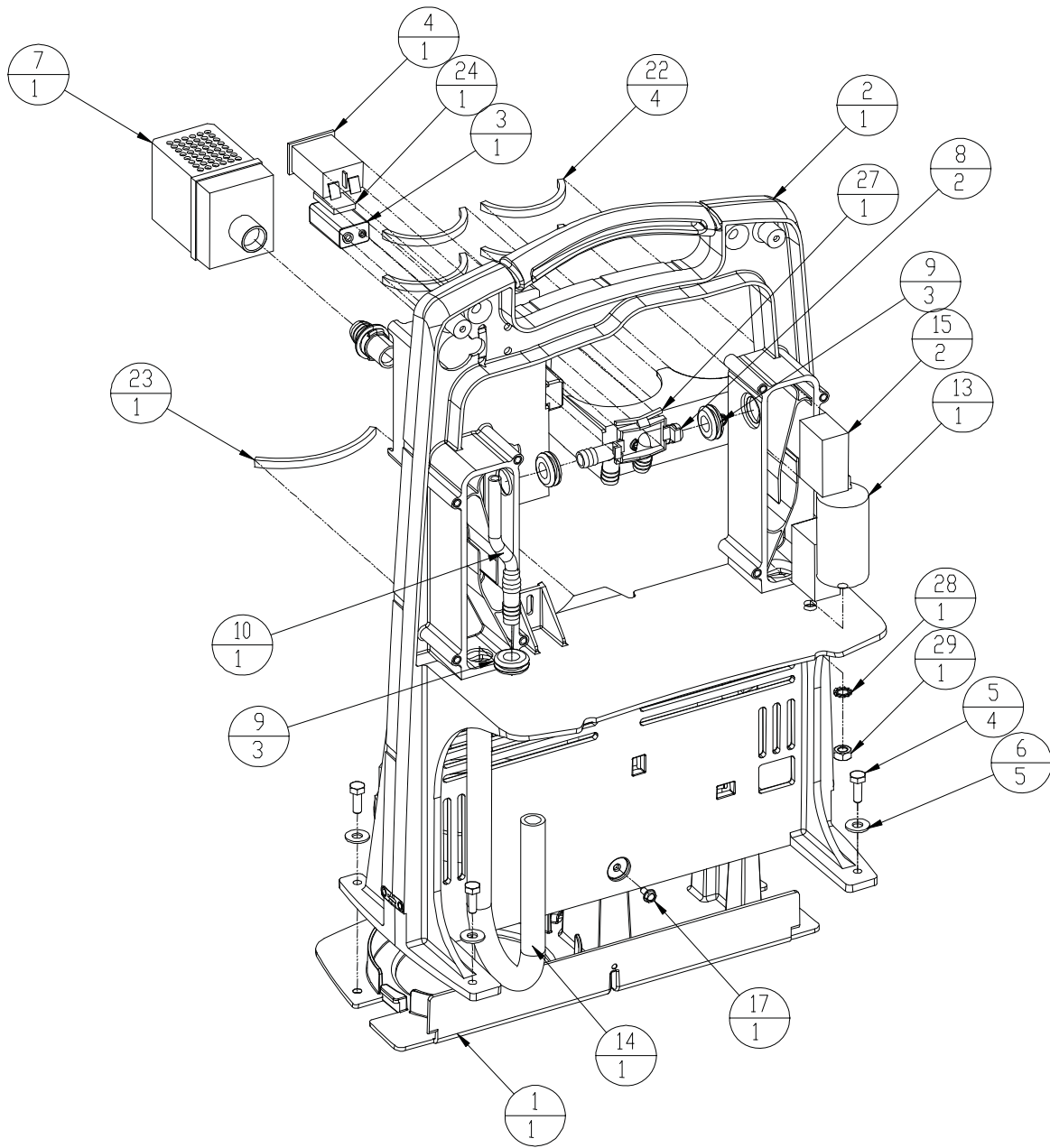
NOTE: USE THIS DRAWING ON UNITS EARLIER THAN SERIAL # 062-11663



A-1.1 BASE ASSEMBLY

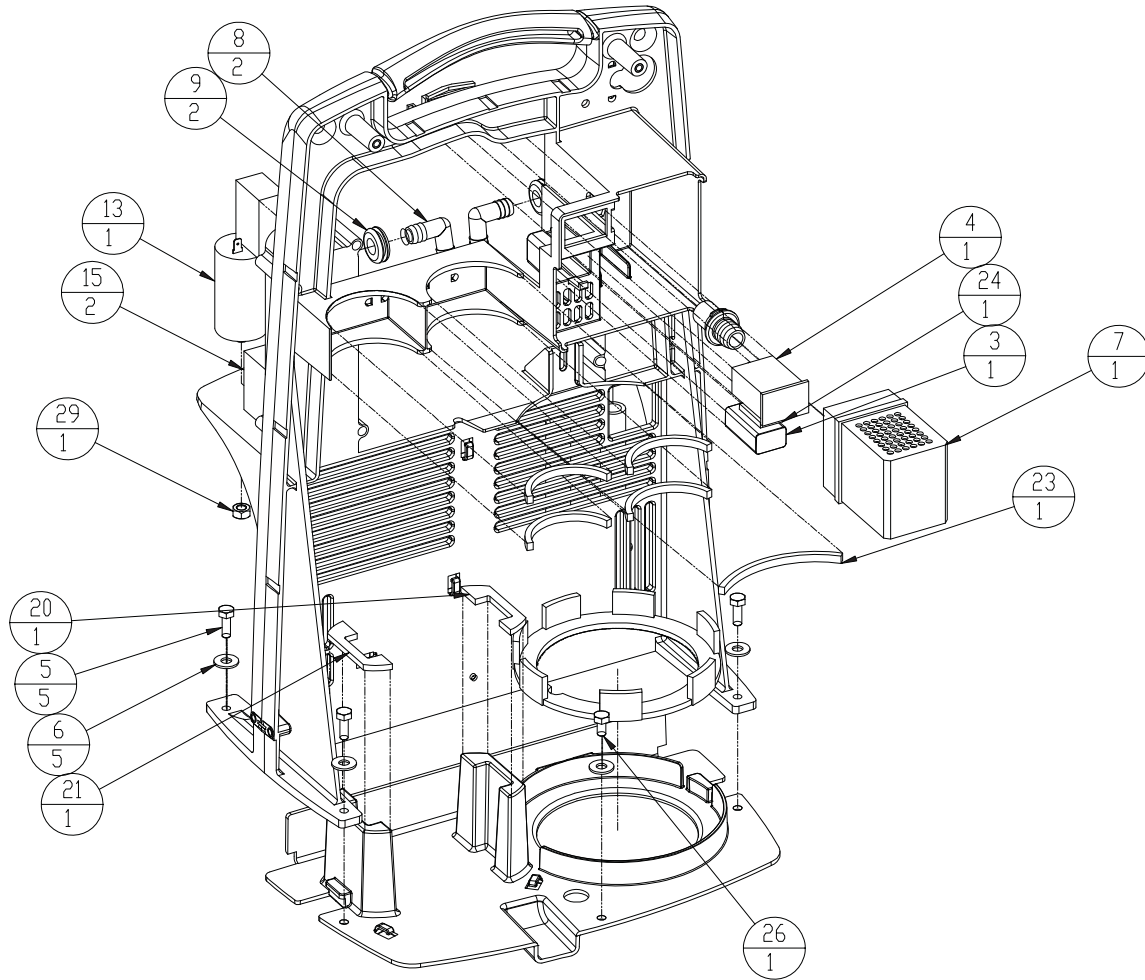
Nuvo 0100-0300Q Rev B

NOTE: USE THIS DRAWING ON UNITS AFTER SERIAL # 062-11663



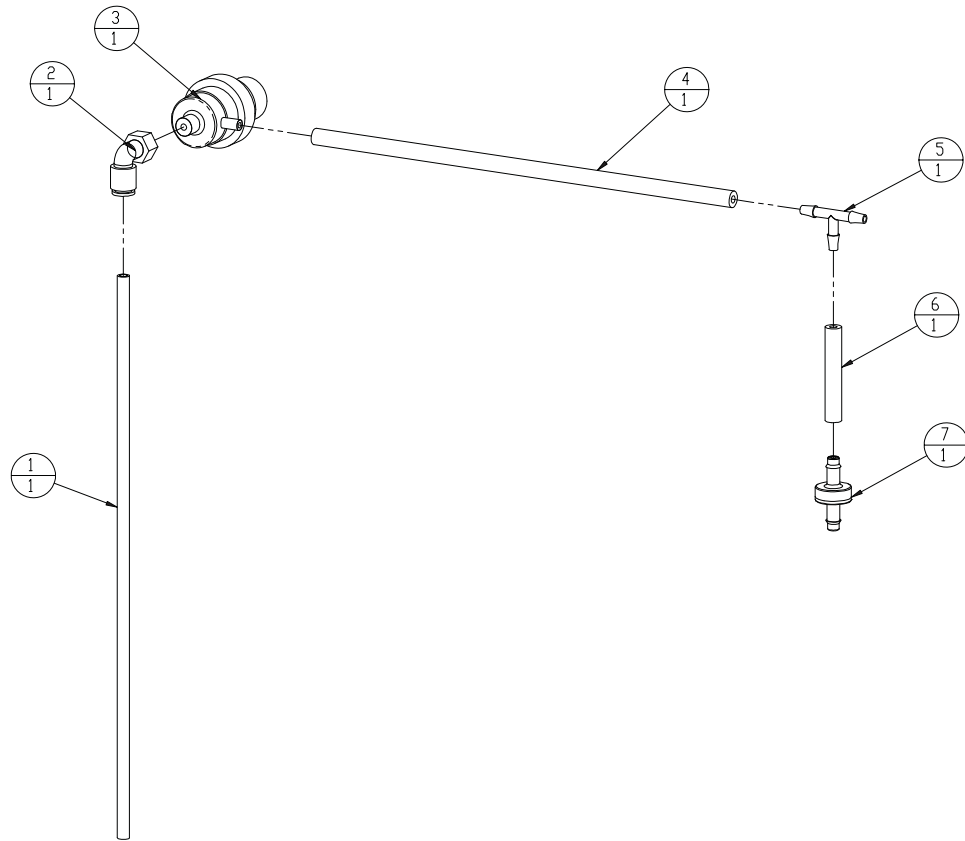
**A-2 MAIN STRUCTURE ASSEMBLY
FRONT VIEW**

NUVO 0140-0300 REV C



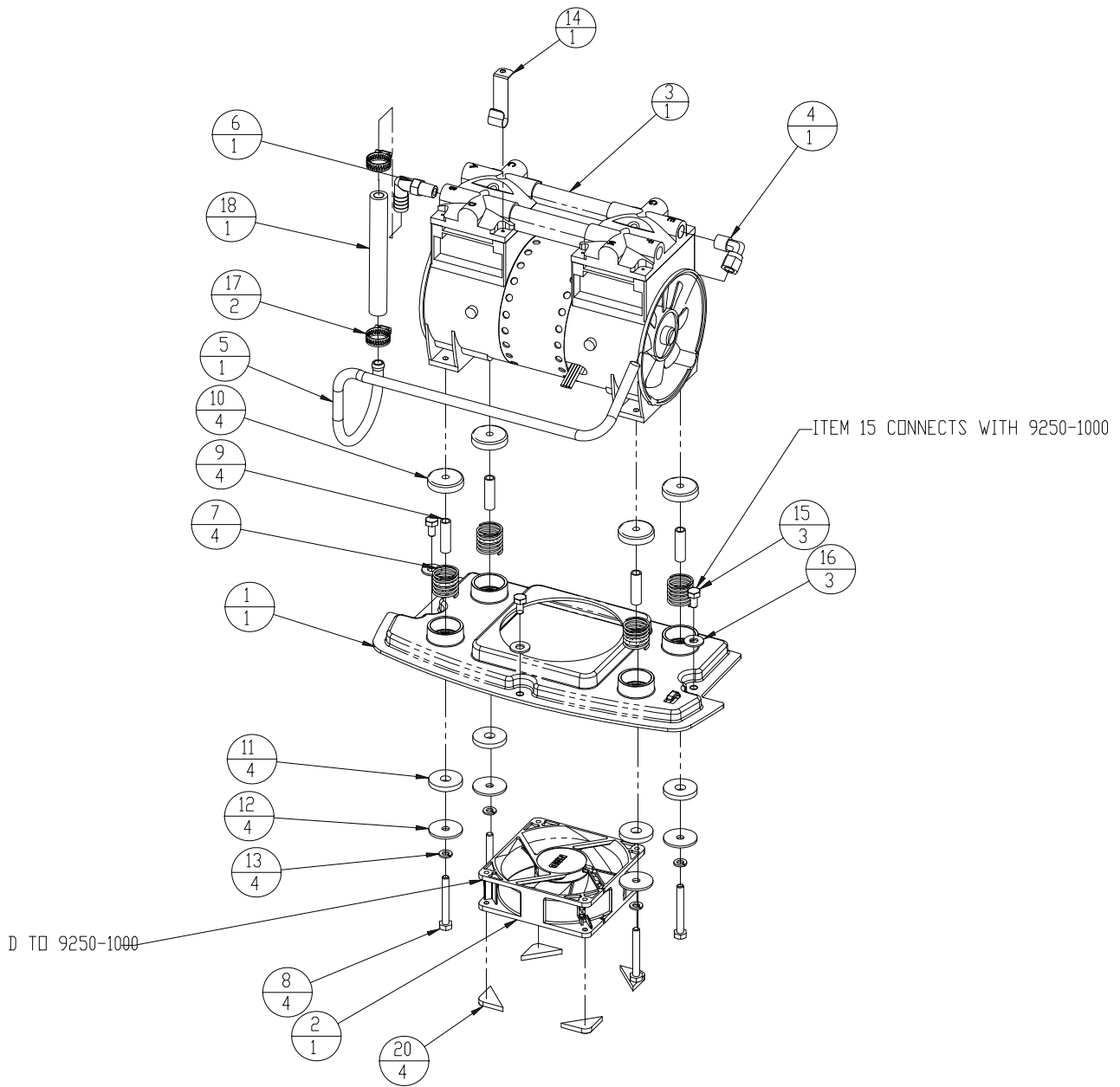
**A-3 MAIN STRUCTURE ASSEMBLY
REAR VIEW**

NUVO 0140-0300 REV C



A-4 REGULATOR ASSEMBLY

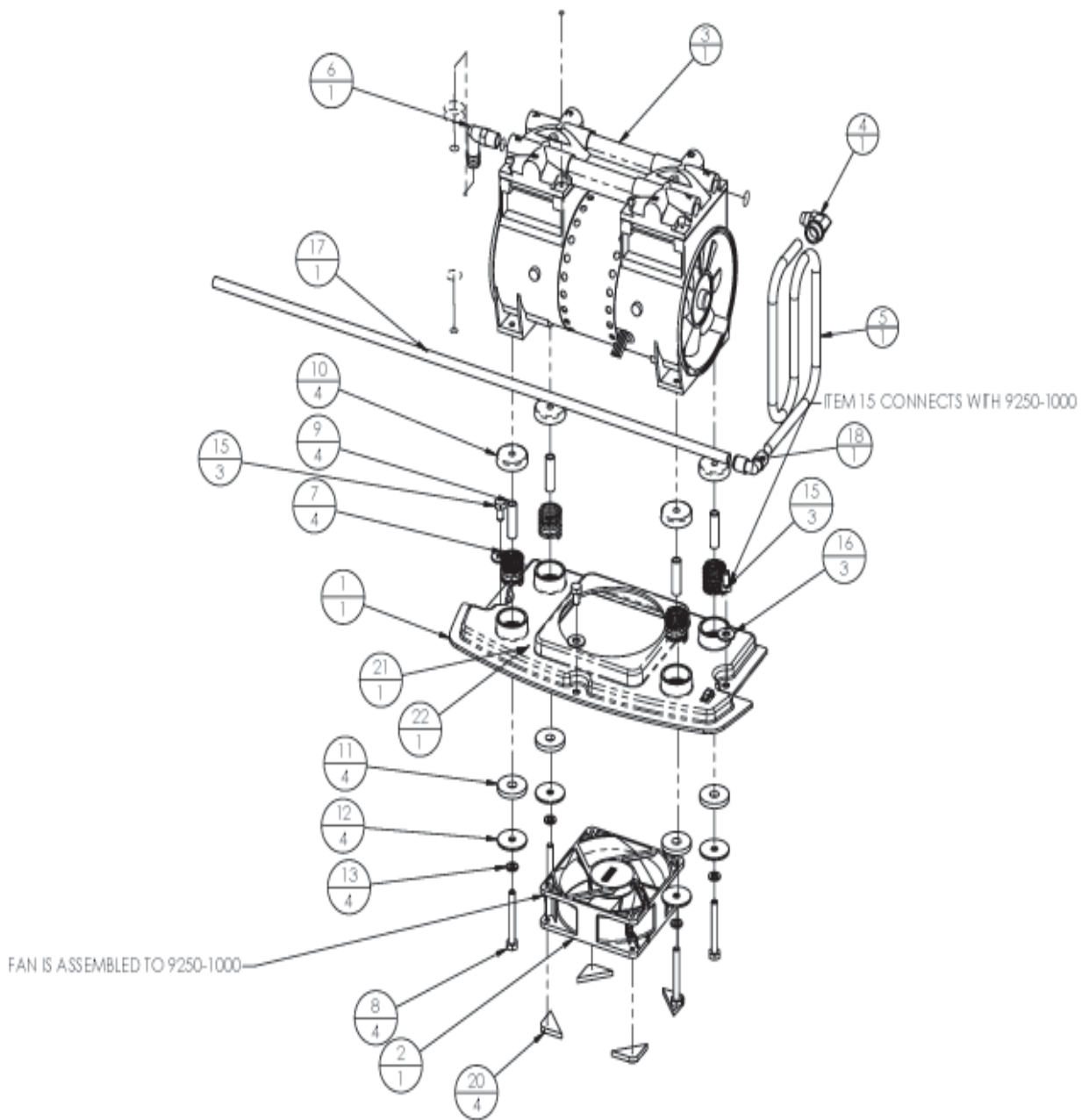
NUVO 0160-0300 REV A



A-5 COMPRESSOR ASSEMBLY

NOTE: USE THIS DRAWING ON UNITS EARLIER THAN SERIAL # 062-11663

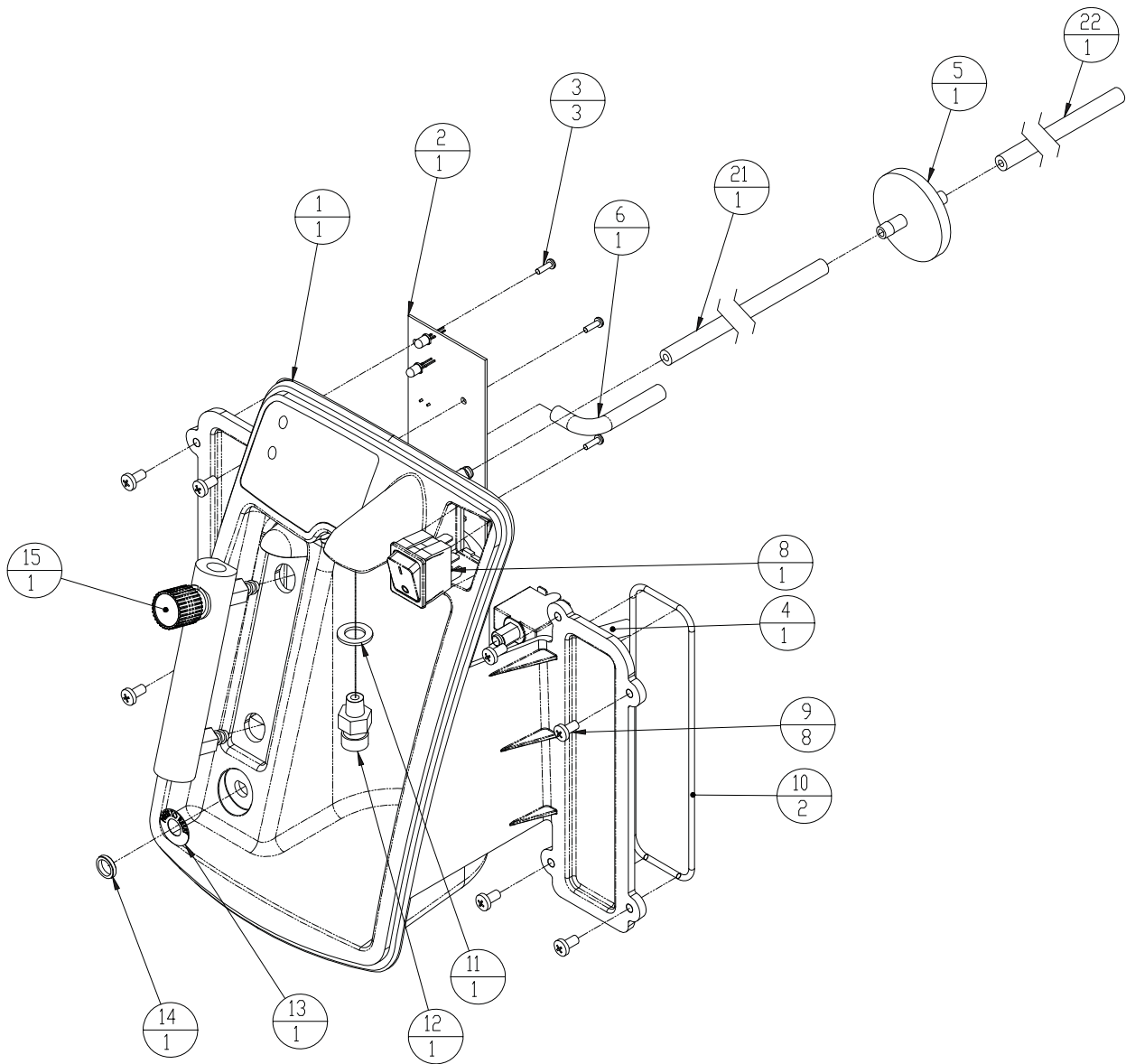
Nuvo 0200-0300 Rev. A



A-5.1 COMPRESSOR ASSEMBLY

NOTE: USE THIS DRAWING ON UNITS AFTER SERIAL # 062-11663

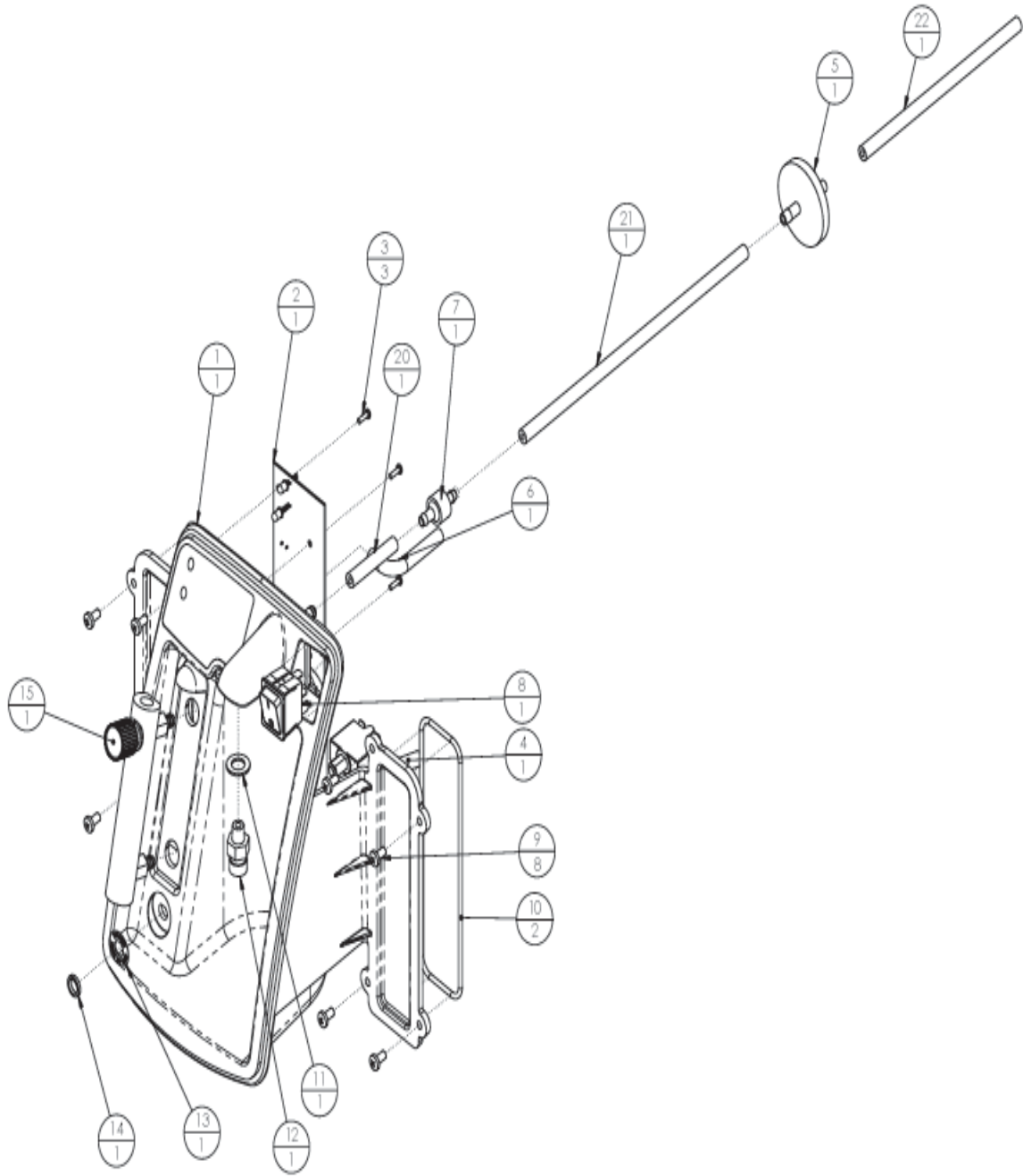
Nuvo 0200-0350 Rev. B



**A-6 CONTROL PANEL ASSEMBLY
UNIT WITH OCSI
FRONT VIEW**

NOTE: USE THIS DRAWING ON UNITS EARLIER THAN SERIAL # 062-11663

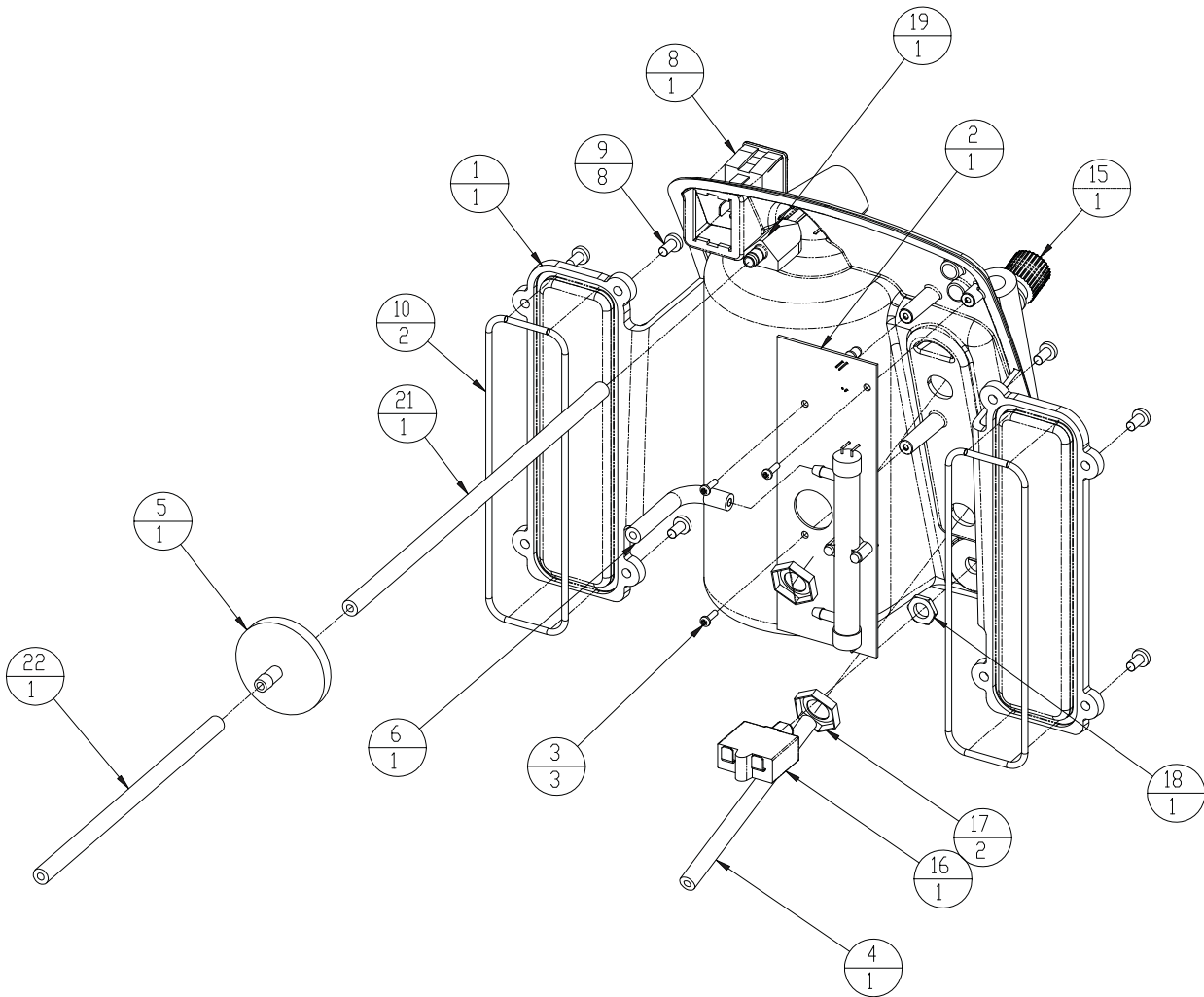
Nuvo 0300-0330 Rev. A



**A-6.1 CONTROL PANEL ASSEMBLY
UNIT WITHOUT OCSI
FRONT VIEW**

NOTE: USE THIS DRAWING ON UNITS AFTER SERIAL # 062-11663

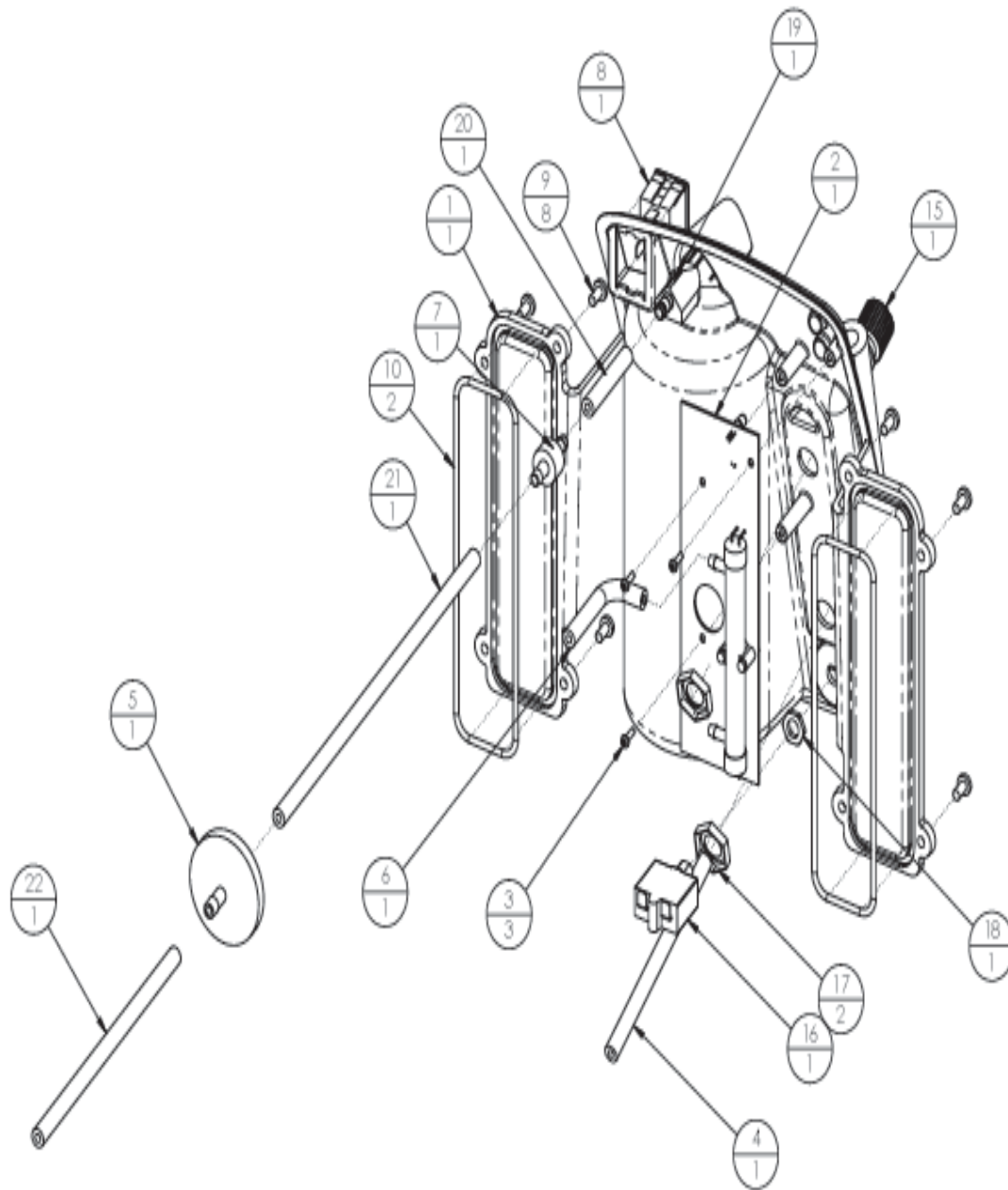
Nuvo 0300-0300 Rev. B



**A-7 CONTROL PANEL ASSEMBLY
UNIT WITH OCSI
REAR VIEW**

NOTE: USE THIS DRAWING ON UNITS EARLIER THAN SERIAL # 062-11663

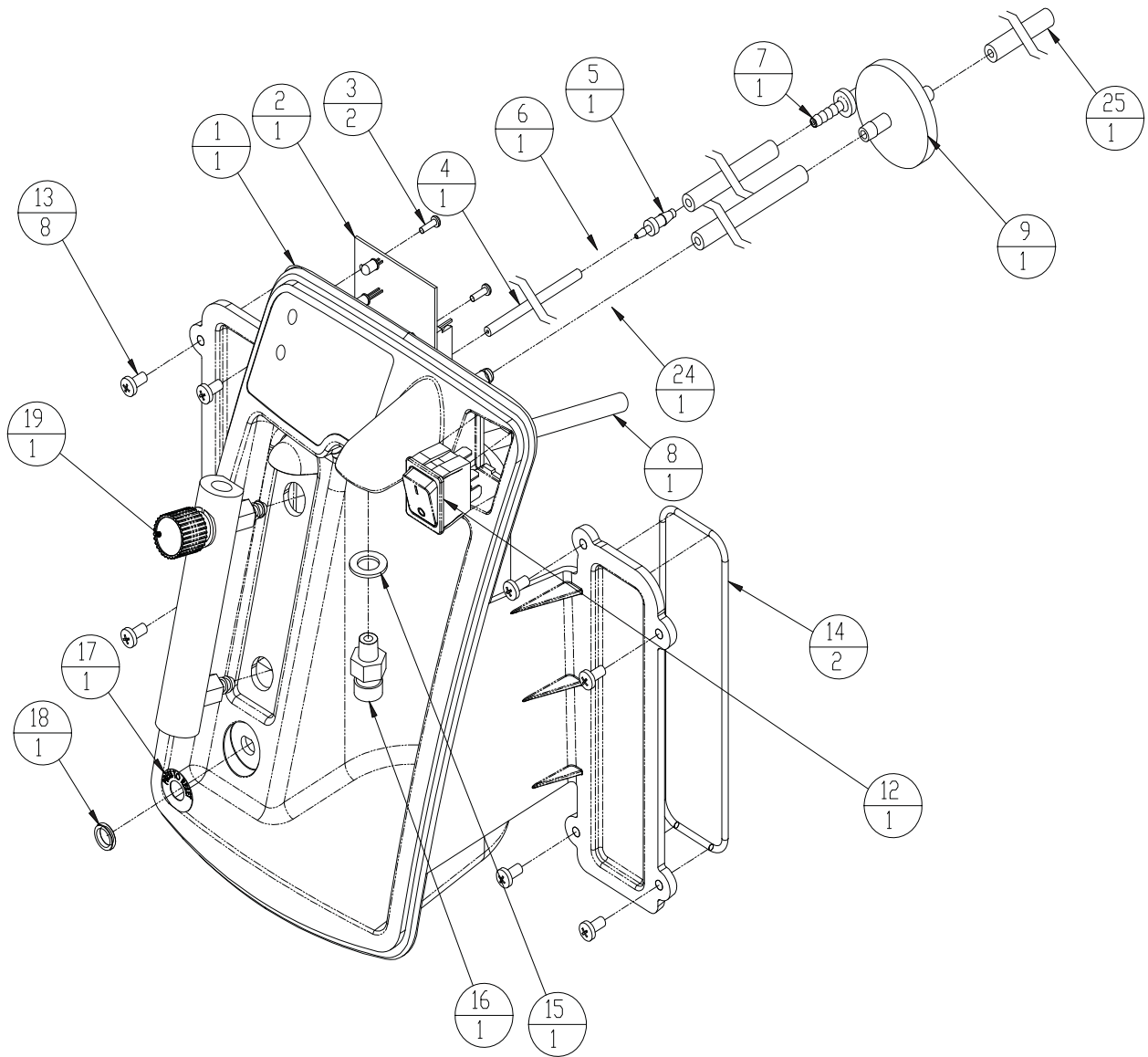
Nuvo 0300-0330 Rev. A



**A-7.1 CONTROL PANEL ASSEMBLY
UNIT WITH OCSI
REAR VIEW**

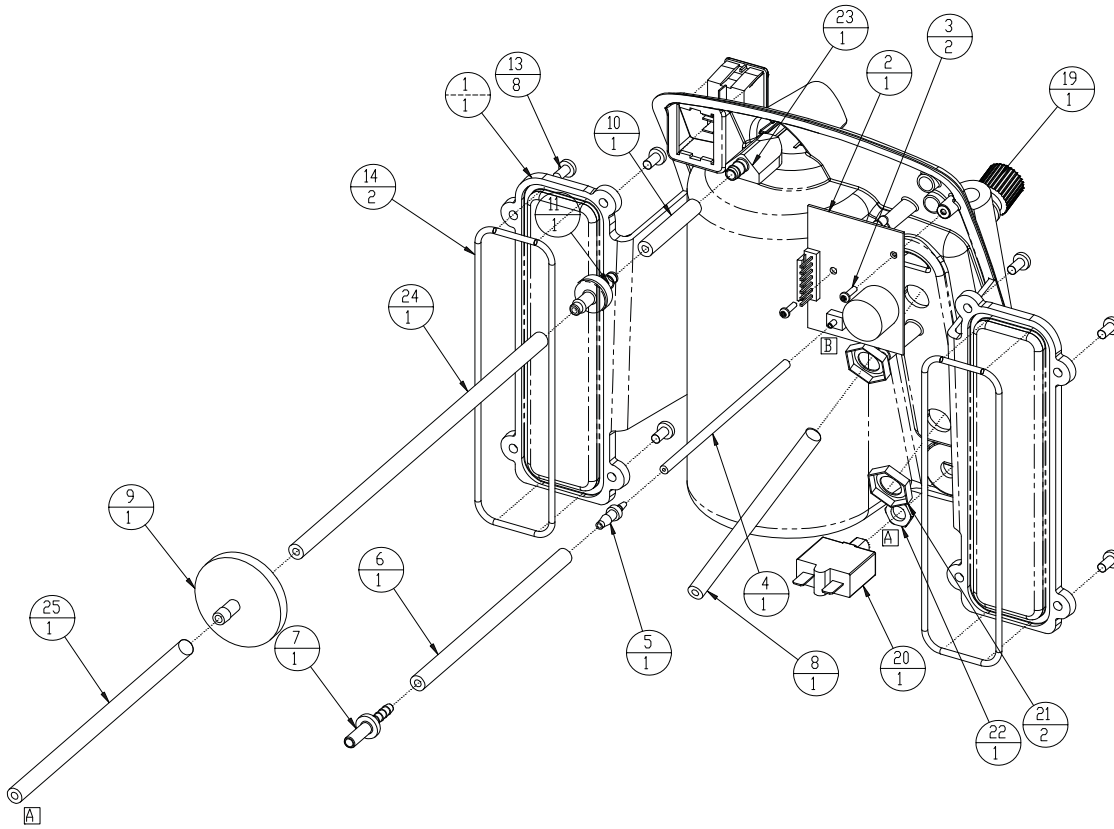
NOTE: USE THIS DRAWING ON UNITS AFTER SERIAL # 062-11663

NUVO 0300-0330 REV. B



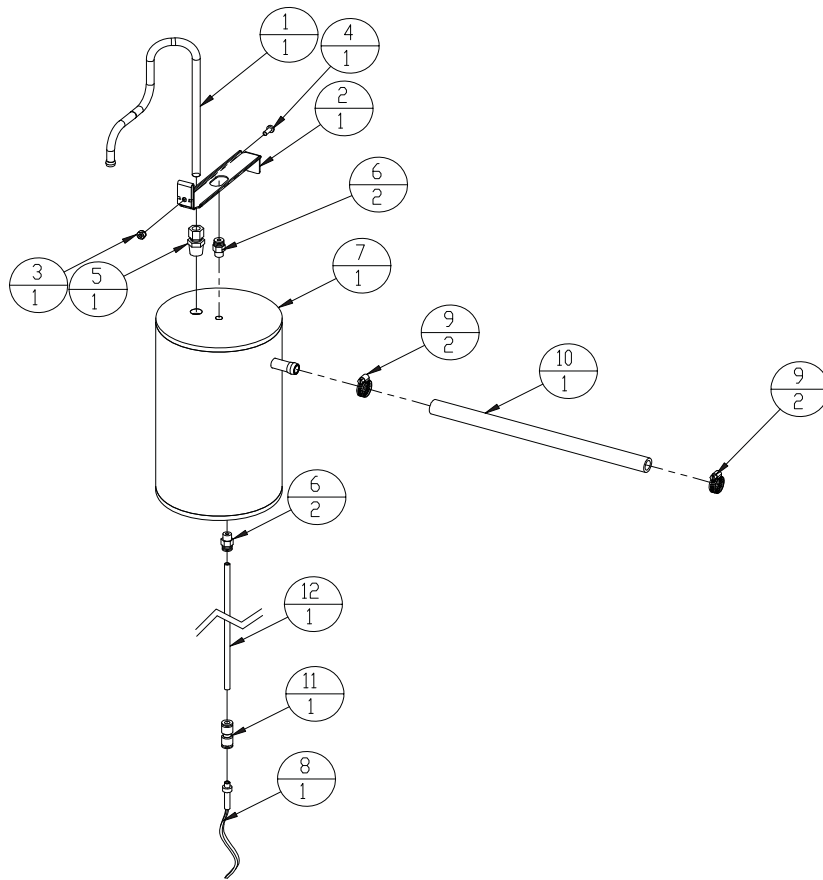
**A-8 CONTROL PANEL ASSEMBLY
STANDARD UNIT WITHOUT OCSI
FRONT VIEW**

NUVO 0300-0300 Rev A



**A-9 CONTROL PANEL ASSEMBLY
STANDARD UNIT WITHOUT OCSI
REAR VIEW**

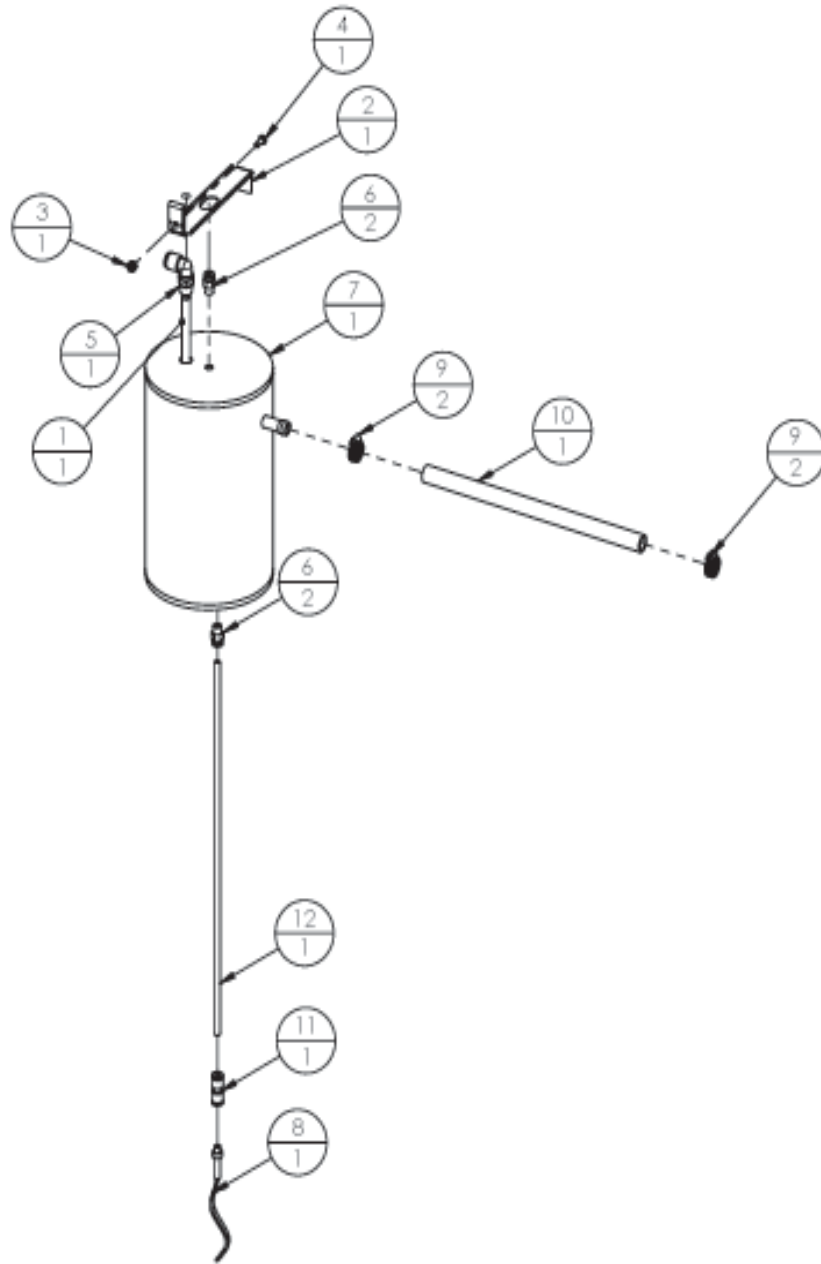
NUVO 0300-0300 Rev A



A-10 AIR TANK ASSEMBLY

NOTE: USE THIS DRAWING ON UNITS EARLIER THAN SERIAL # 062-11663

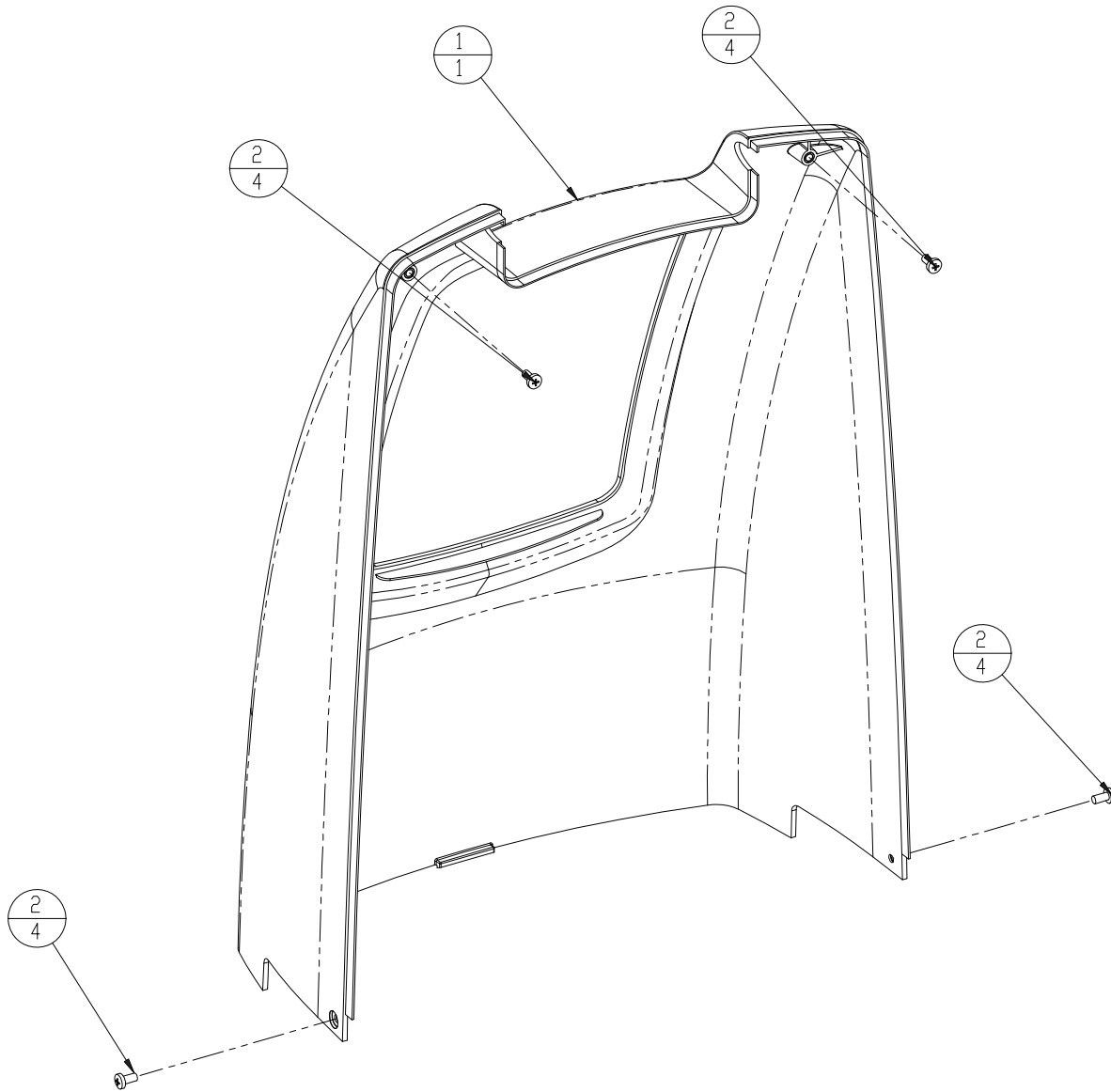
Nuvo 0350-0300 REV. B



A-10.1 AIR TANK ASSEMBLY

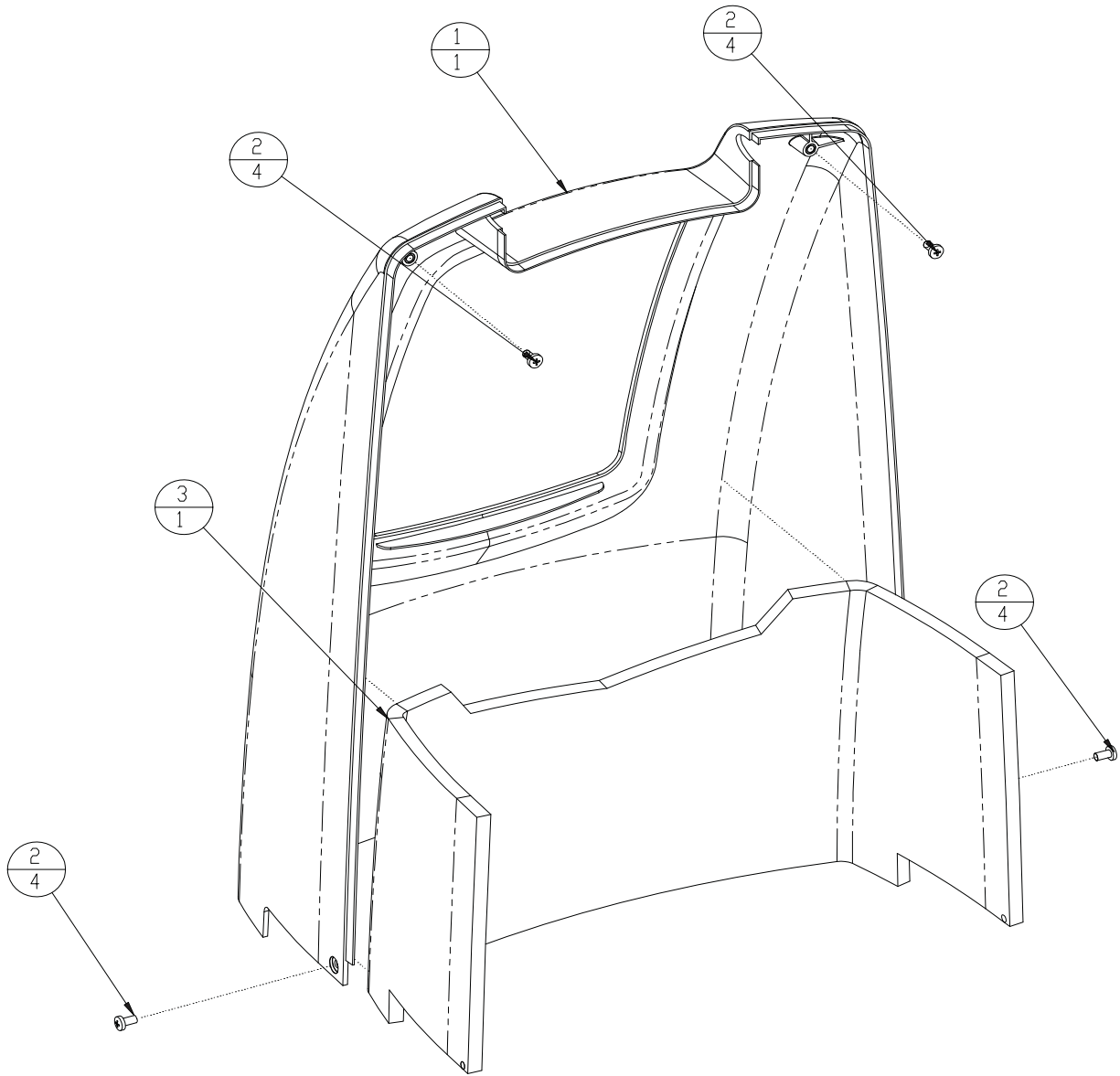
NOTE: USE THIS DRAWING ON UNITS AFTER SERIAL # 062-11663

NUVO 0350-0300 REV. B



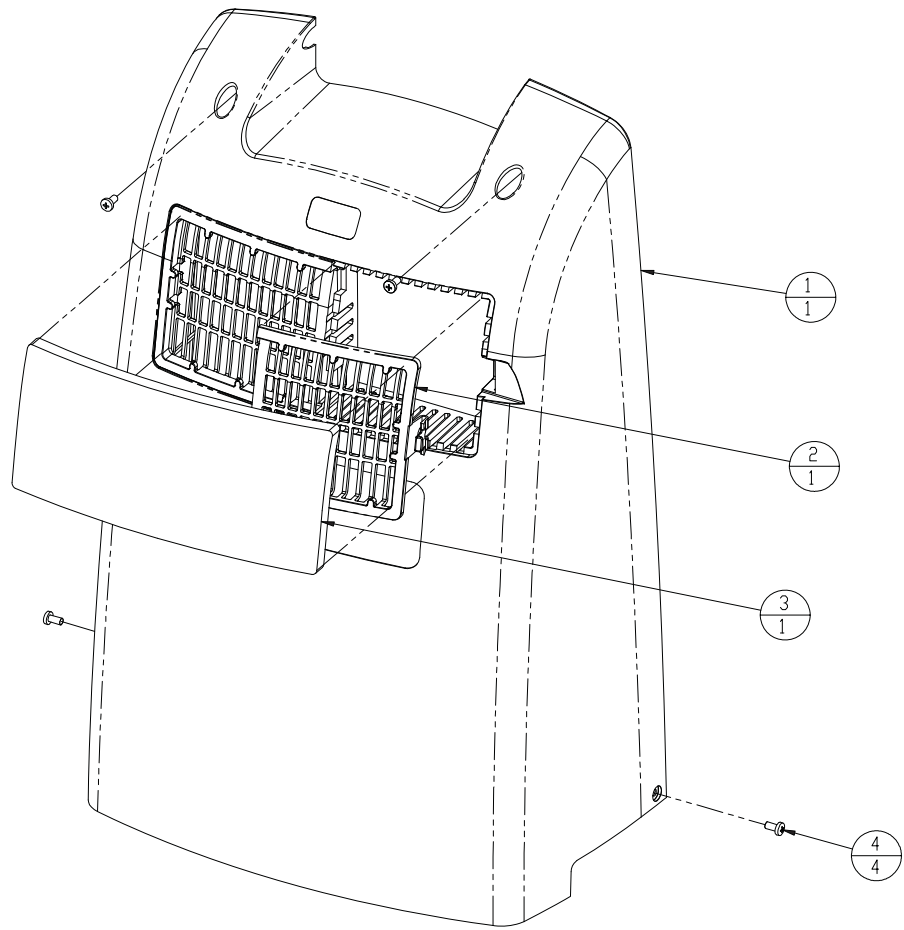
A-11 FRONT CABINET ASSEMBLY

Nuvo 0500-0300 Rev. A



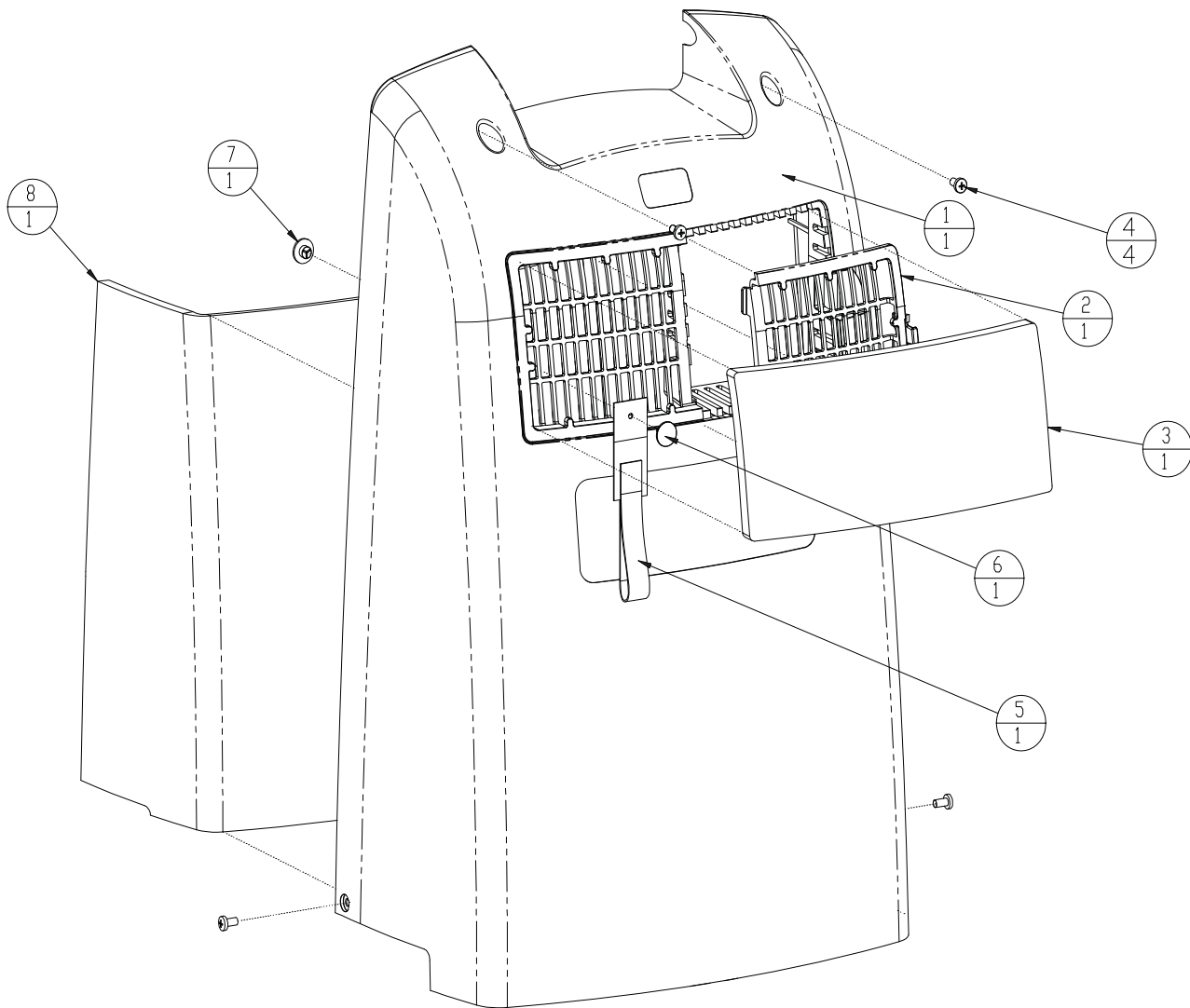
A-11.1 FRONT CABINET ASSEMBLY

Nuvo 0500-0300 Rev. B



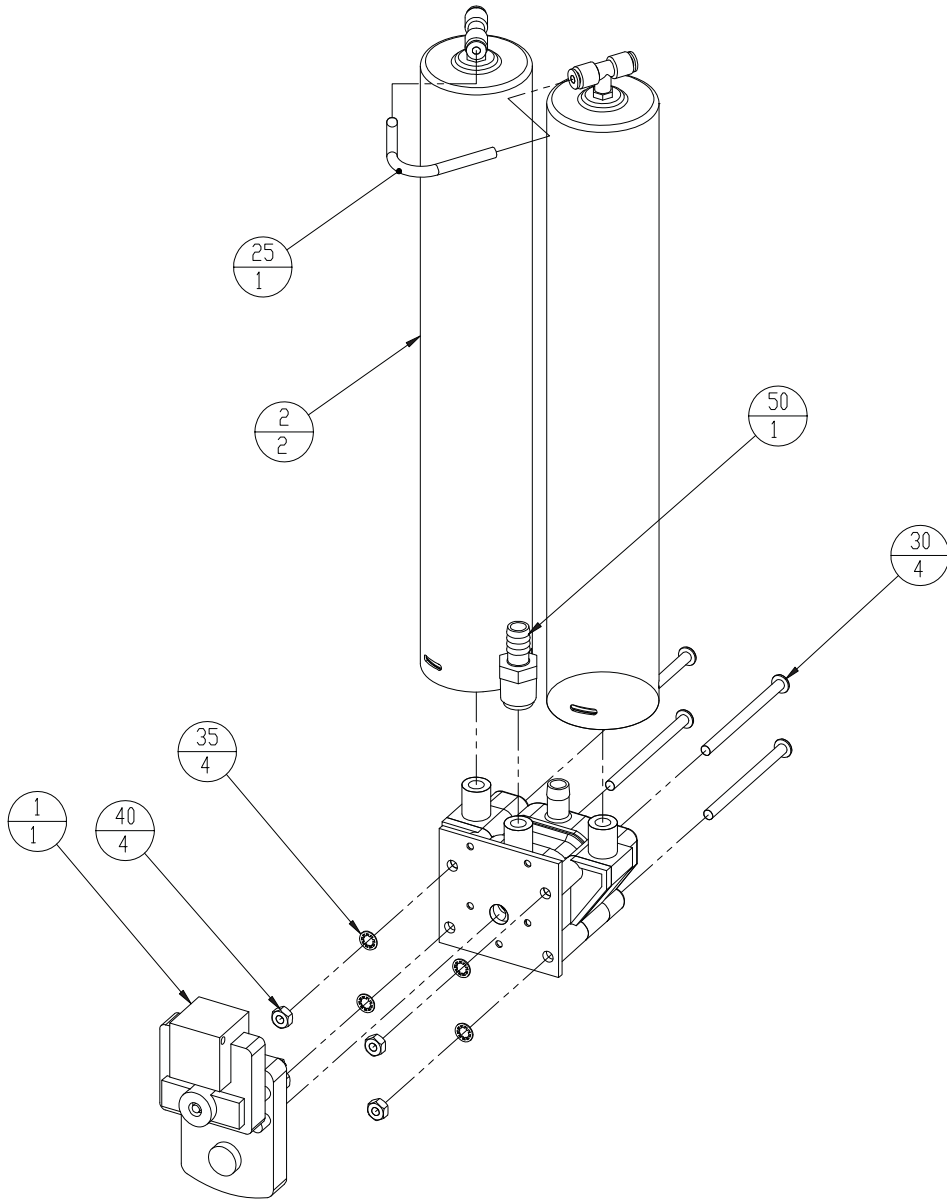
A-12 REAR CABINET ASSEMBLY

NUVO 0550-0300 REV A



A-12.1 REAR CABINET ASSEMBLY

Nuvo 0550-0300 Rev. B



A-13 SIEVE MODULE ASSEMBLY

NUVO 0600-0300 Rev A

REPLACEMENT PARTS LISTING

Item numbers reference call-out bubbles on the illustrations

Item	Part Number	Description	Qty	UOM
BASE ASSEMBLY				
1	9250-1000	BASE, NUVO	1	EA
2	8300-8068	CASTER	4	EA
3	9250-1066	FOAM,BASE ASSY.	1	EA
MAIN STRUCTURE ASSEMBLY				
1	9250-1003	BASE, PLATE NUVO	1	EA
2	9250-1004	STRUCTURE,MAIN NUVO	1	EA
3	7206-0027	BATTERY, 9 VOLT	1	EA
4	9250-1017	HOURMETER,UNV SNAP-IN	1	EA
5	9250-1047	BOLT, 1/4 -20 X 3/4" LG.GRADE2	4	EA
6	9250-1020	WASHER,FLAT 1/4"	5	EA
7	9250-1028	FILTER, AIR INLET	1	EA
8	6814-9228	ELBOW, 1/2 DOUBLE BARB, NYLON	2	EA
9	9250-1030	GOMMET,RUBBER	3	EA
10	9250-1069A	TUBE,ASSY.SOUND INLET	1	EA
11	9250-1500	HARNESS,WIRING 115 VOLT	1	EA
11a	9250-1510	HARNESS, WIRING 230 VOLT	1	EA
12	9250-1059	CONNECTOR,MOLDED INLET	1	EA
13	9250-1022	CAPACITOR,15UF W/STUD MOUNT	1	EA
14	9250-1027	HOSE,PREFORMED CLEAR	1	EA
15	9250-1051	FOAM, EXHAUST MUFFLER	2	EA
16	7854-6065	HOSE 1/2"IDX .728"OD X 14.5" L	1	EA
17	9250-1046	SCREW 10 X .5"LG HEX WASHER	1	EA
18	9250-1062	TIE WRAP, 14" LONG	2	EA
19	9250-1102	FOAM,KIT VIBRATION	1	EA
25	9030-6008	TIE, WRAP 4~	5	EA
26	9250-1058	BOLT, 1/4 -20 X .5" LG.	1	EA
REGULATOR ASSEMBLY				
1	9250-1043	HOSE, 1/4 OD X 7" LG	1	EA
2	6814-9221	ELBOW , 1/8 NPTF X 1/4 ODT	1	EA
3	9250-1060	REGULATOR,2 PORT FREEDOM	1	EA
4	7854-6054	HOSE 5/32 X 11/32 X 10"LG SIL	1	EA
5	6491-1008	TEE NYLON 3/16 HOSE BARB	1	EA
6	7854-6052	HOSE 5/32 X 11/32 X 2 LG SILIC	1	EA
7	6956-9674	VALVE CHECK 1/4 HOSE MPC A 975	1	EA

COMPRESSOR ASSEMBLY

1	9250-1018	PLATE, COMPRESSOR	1	EA
2	9250-1023	FAN, MUFFIN 110 VOLT	1	EA
2a	9250-1024	FAN, MUFFIN 230 VOLT	1	EA
3	7355-3638	COMPRESSOR 2660 110V	1	EA
3a	7355-3639	COMPRESSOR 2660 230V	1	EA
4	9250-1052	FITTING,BRASS 1/4"NPX3/8" TUBE	1	EA
5	9250-1094	TUBE,HEAT EXCH. 3/8" O.D.	1	EA
6	6191-5003	ELBOW, NYL 1/4 NPT X 1/2 HOSE	1	EA
7	9250-1016	SPRING,COMPRESSOR VIBRATION	4	EA
8	9250-1105	BOLT,1/4"X20X2"LGGRADE 2	4	EA
9	9250-1111	SLEEVE,1/4"ID X 1.29"LG	4	EA
10	9250-1112	CAP,COMP. SPR. TOP	4	EA
12	9250-1109	WASHER,FLAT .25"ID X 1.25"OD	4	EA
13	9250-1110	WASHER,LOCK 1/4" ID.	4	EA
14	9250-1049	BRACKET, EXH.TUBE COMP.	1	EA
15	9250-1058	BOLT, 1/4 -20 X .5" LG.GRADE2	3	EA
16	9250-1020	WASHER,FLAT 1/4"	3	EA
17	9250-1029	CLAMP, HOSE NYLON.538"-.608"ID	2	EA
18	9250-1115	HOSE 3/8 ID X .375"X.575"X5.0"	1	EA
19	9250-1064	BUMPER, .5'DIAX .06 THK. BLACK	4	EA
99	9030-6008	TIE, WRAP 4~	1	EA

CONTROL PANEL ASSEMBLY (OCSI MODEL)

1	9250-1005	PANEL,CONTROL	1	EA
2	9250-1080	BOARD, OCSI MODULE	1	EA
3	9250-1045	SCREW,PLASTITE#4X3/8" PAN.HD	2	EA
4	9250-1041	HOSE 5/32 X 11/32 X 5 LONG SIL	1	EA
5	7631-1053	FILTER, BACTERIAL MK-5	1	EA
6	7854-6051	HOSE 5/32 X 11/32 X 3 LONG SIL	1	EA
7	6956-9674	VALVE CHECK 1/4 HOSE MPC A 975	1	EA
8	9250-1012	SWITCH,POWER 110 VOLT	1	EA
8a	9250-1013	SWITCH,POWER 230 VOLT	1	EA
5	6491-1007	ADAPTER 5/32 X 3/32 HOSE BARB	1	EA
6	7854-6050	HOSE 5/32 X 11/32 X 6 LONG SIL	1	EA
7	6491-1006	ADAPTER 1/4 ODT X 3/16 HOSE	1	EA
9	9250-1050	SCREW, 10-32 X 3/8 PAN HD.PHIL	8	EA
10	9250-1040	O-RING, 5.0" ID X .125THICK	2	EA
11	9250-1048	WASHER,NYLON .44"IDX.75"X.062"	1	EA
12	9007-6G32	HUMIDIFIER FITTING DISS	1	EA
13	9250-1039	COVER,PRESS TO RESET 3/8"	1	EA
15	9250-1009	FLOWMETER, 0-5 LPM	1	EA
16	9250-1011	BREAKER,CIRCUIT 10 AMP	1	EA
16a	9250-1010	BREAKER, CIRCUIT 5 AMP	1	EA

18	9250-1038	NUT,HEX ,NICKEL 3/8"-27	1	EA
19	9250-1021	HUMIDIFIER BLOCK	1	EA
20	7854-6052	HOSE 5/32 X 11/32 X 2 LG SILIC	1	EA
21	7854-6054	HOSE 5/32 X 11/32 X 10"LG SIL	1	EA
22	7854-6055	HOSE 5/32 X 11/32 X 7"LG SIL	1	EA

CONTROL PANEL ASSEMBLY (STD – NON OCSI)

1	9250-1005	PANEL,CONTROL	1	EA
2	9250-1090	BOARD, STD NON-OCSI	1	EA
3	9250-1045	SCREW,PLASTITE#4X3/8" PAN.HD	2	EA
4	7854-6048	HOSE 1/16 X 3/16 X 5 LONG SILI	1	EA
5	6491-1007	ADAPTER 5/32 X 3/32 HOSE BARB	1	EA
6	7854-6050	HOSE 5/32 X 11/32 X 6 LONG SIL	1	EA
7	6491-1006	ADAPTER 1/4 ODT X 3/16 HOSE	1	EA
8	9250-1041	HOSE 5/32 X 11/32 X 5 LONG SIL	1	EA
9	7631-1053	FILTER, BACTERIAL MK-5	1	EA
10	7854-6052	HOSE 5/32 X 11/32 X 2 LG SILIC	1	EA
11	6956-9674	VALVE CHECK 1/4 HOSE MPC A 975	1	EA
12	9250-1012	SWITCH,POWER 110 VOLT	1	EA
12a	9250-1013	SWITCH,POWER 230 VOLT	1	EA
13	9250-1050	SCREW, 10-32 X 3/8 PAN HD.PHIL	8	EA
14	9250-1040	O-RING, 5.0" ID X .125THICK	2	EA
15	9250-1048	WASHER,NYLON .44"IDX.75"X.062"	1	EA
16	9007-6G32	HUMIDIFIER FITTING DISS	1	EA
17	9250-1039	COVER,PRESS TO RESET 3/8"	1	EA
19	9250-1009	FLOWMETER, 0-5 LPM	1	EA
20	9250-1011	BREAKER,CIRCUIT 10 AMP	1	EA
20a	9250-1010	BREAKER, CIRCUIT 5 AMP	1	EA
22	9250-1038	NUT,HEX ,NICKEL 3/8"-27	1	EA
23	9250-1021	HUMIDIFIER BLOCK	1	EA
24	7854-6054	HOSE 5/32 X 11/32 X 10"LG SIL	1	EA
25	7854-6055	HOSE 5/32 X 11/32 X 7"LG SIL	1	EA
99	9030-6008	TIE, WRAP 4~	1	EA

AIR TANK ASSY,NUVO

1	9250-1031	TUBE,AIR TANK ALUM 3/8"	1	EA
2	9250-1019	BRACKET,AIR TANK	1	EA
3	6134-0916	SCREW,10-32 X 1/2~ RD PHILLIPS	1	EA
4	9250-1037	NUT,10-32 ,LOCKNYLON INSERT	1	EA
5	9250-1056	FITTING,BRASS AIR TANK	1	EA
6	7355-4775	CONNECTOR, STRAIGHT 1/8~MNPT X	2	EA
7	9250-1055	TANK, AIR 6"O.D. X 10" LG	1	EA
8	9007-4G25	WICK ASSY.	1	EA
9	9250-1026	CLAMP, HOSE NYLON.67"-.78"ID	2	EA

10	9250-1053	HOSE 1/2"ID X 3/4"OD X 10.125"	1	EA
11	9200-1006	FITTING, QUICK DISCONNECT	1	EA
12	9200-1612	HOSE, 1/4 OD X 18 LG	1	EA

POWER CORD ASSEMBLY

1	9250-1311	CORD,POWER CONC (US)	1	EA
1A	9250-1330	CORD,POWER CONC (Europe)		

CABINET FRONTASSEMBLY

1	9250-1002	CABINET,FRONT NUVO	1	EA
2	9250-1050	SCREW, 10-32 X 3/8 PAN HD.PHIL	4	EA

CABINET BACK ASSEMBLY

1	9250-1001	CABINET,BACK NUVO	1	EA
2	9250-1006	DOOR,ACCESS NUVO	1	EA
3	9250-1025	FILTER,CABINET INLET	1	EA
4	9250-1050	SCREW, 10-32 X 3/8 PAN HD.PHIL	4	EA

MODULE ASSEMBLY

1	9250-8005	MODULE 115 V 60 HZ NEW	1	EA
2	9022-8G06	MODULE 125 V 60 HZ REBUILT	1	EA
1A	9250-8008	MODULE 230 V 50 HZ NEW	1	EA
2A	9022-8G07	MODULE 230 V 50 HZ , REBUILT	1	EA

LABELS

1	9250-1076	LABEL,FRONT STD.	1	EA
1A	9250-1078	LABEL, FRONT W/OCSI	1	EA
2	9250-1070	LABEL FRONT "NUVO"	1	EA
3	9250-1071	LABEL,TOP WARNING ICON	1	EA
4	9250-1075	LABEL BACK 115/60	1	EA
4A	9250-1077	LABEL BACK CE	1	EA
7	2010-2224F	OPERATING GUIDE, STD NUVO	1	EA
7A	2010-2224CE	OPERATING GUIDE, CE MODEL	1	EA

SHIPPING MATERIAL

1	9250-1600	CARTON, CONCENTRATOR NUVO	1	EA
2	9250-1601	PACK, BOX TOP	1	EA
3	9250-1602	PACK, BOX BOTTOM	1	EA

ACCESSORIES

1	9012-8780	CANNULA W/7 FT TUBING	1	EA
2	9012-8781	TUBING EXTENSION 25 FT	1	EA
3	9012-8774	HUMIDIFIER 350 CC	1	EA
4	9012-8783	HOSE CONNECTOR	1	EA
5	9012-8785	ADAPTER DISS TO HOSE	1	EA