


Urostomy Pouch

1-piece and 2-piece Click and Flex

 Coloplast A/S
3050 Denmark
IFU11478 The Coloplast logo is a registered trademark of Coloplast A/S.
© [2010-03.] All rights reserved Coloplast A/S, 3050 Humlebæk, Denmark.

Multichamber

The pouch is divided into chambers that encapsulate the fluid to ensure that it remains flat and to reduce splashing noise.

Soft Cover

The new soft cover is water repellent and is made of durable fabric.

For Convex Light/Soft Seal with shallow convexity only

Soft Seal with shallow convexity/Convex light products are designed for those people who have a stoma that is flush (skin level), retracted (below skin level) or situated in skin folds. The appliance comes with a belt attachment on either side.

How to use SenSura Urostomy pouch 1-piece

1



2



3



4



5



6



7



1. Cutting

Trace the size and shape of the stoma using the stoma guide. Cut the hole to fit the size and shape of the stoma. To reduce the risk of leakage and skin problems it is very important that the hole fits perfectly around the stoma.

Cutting is easier if you use a curved pair of scissors. Ensure that the skin is clean and dry before you proceed with the application of your pouch.

2. Removal of the protective film

Place a thumb on the white tab and pull the blue release tab away from the base plate to remove the protective film.

3. Application

Apply the base plate around the stoma. To ensure a perfect fit around the stoma, fold the pouch backwards, press firmly against the skin starting at the bottom and smoothing upwards with your fingers. Please remember to close the outlet before use.

4. Fold up outlet on Soft Cover pouch

The outlet can be hidden in the pocket on the front to make it more comfortable and discreet.

5. Drainage of urostomy pouch

Hold the plug/end of the outlet upwards and squeeze the outer end of outlet, pull out the plug, and relax your hold on the outlet and drain the pouch. After complete drainage, ensure that the outlet is firmly closed with the plug fully inserted.

6. Removal of the pouch

Hold the white tab on the base plate and gently pull the pouch away from the skin. Apply light pressure on the skin with your free hand as you peel the pouch downwards.

7. Coloplast Night bag

For greater security we suggest you use the Coloplast urostomy night bag, specially designed to connect directly into the SenSura urostomy pouch. However, the SenSura urostomy pouches can be connected to all types of overnight drainage bags by using the supplied connector.

The narrow end is pushed into the outlet of the SenSura urostomy pouch and the other end is connected to the night drainage system.

Warning

Reuse of this single use product may create a potential risk to the user. Reprocessing, cleaning, disinfection and sterilization may compromise product characteristics which in turn create an additional risk of physical harm to or infection of the patient.

Caution

Please seek advice from your Enterostomal Therapist or doctor before using Soft Seal with shallow convexity products.

Coloplast accepts no liability for any injury or other loss that may arise if this product is used in a manner contrary to Coloplast's current recommendations.

Intended Use

The SenSura ostomy adhesive plate and ostomy pouch are intended to collect output from a stoma. The adhesive plate is intended to adhere to peristomal skin and is used for positioning of ostomy pouches.

Information

A new double layer baseplate

The darker lower layer of the baseplate ensures extra absorption of moisture from the skin and is more skin friendly. The lighter upper layer of the baseplate protects the skin from output. The flex pattern on top of the baseplate ensures extra flexibility and makes the appliance more comfortable.

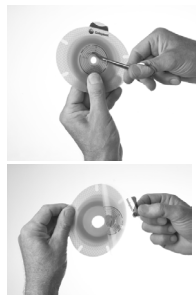
Design of the pouch

The design gives the pouch a suitable size combining function and discretion.

Non-return valve

The SenSura Urostomy pouch has a non-return valve to help prevent urinary infections by stopping urine from washing over the stoma.

1

**1. Cutting / Removal of protective film**

Trace the size and shape of the stoma using the stoma guide. Cut the hole to fit the size and shape of the stoma. To reduce the risk of leakage and skin problems it is very important that the hole fits perfectly around the stoma. Cutting is easier if you use a curved pair of scissors. Ensure that the skin is clean and dry before you proceed with the application of your pouch.

Place a thumb on the white tab and pull the blue release tab away from the base plate to remove the protective film.

2

**2. Application of the base plate**

Apply the base plate around the stoma. To ensure a perfect fit around the stoma, press firmly against the skin starting at the bottom and smoothing upwards with your fingers.

3a

**3. Application of the pouch**

a: Ensure the lock-ring is open. Press pouch and base plate together starting at the bottom. Make sure the pouch is securely positioned on the coupling. The pouch may be turned to optimal position.

b: Locking the coupling

Close the lock-ring. When you hear a click the pouch is securely locked to the base plate. Close the outlet before use.

b

**4. Fold up outlet on Soft Cover pouch**

The outlet can be hidden in the pocket on the front to make it more comfortable and discreet.

4

**5. Drainage of urostomy pouch**

Hold the plug/end of the outlet upwards and squeeze the outer end of outlet, pull out the plug, and relax your hold on the outlet and drain the pouch. After complete drainage, ensure that the outlet is firmly closed with the plug fully inserted.

6. Removal of the pouch and baseplate

a. Open the lock-ring by pressing the small tab with a fingertip.

b. Hold on to the top of the pouch. Remove the pouch from the base plate by pulling the pouch up and away.

c. Grab the white removal ear and pull downwards slowly.

5



6a



b



c



7

**7. Coloplast Night bag**

For greater security we suggest you use the Coloplast urostomy night bag, specially designed to connect directly into the SenSura urostomy pouch. However, the SenSura urostomy pouches can be connected to all types of overnight drainage bags by using the supplied connector. The narrow end is pushed into the outlet of the SenSura urostomy pouch and the other end is connected to the night drainage system.

1

**1. Cutting / Removal of protective film**

Trace the size and shape of the stoma using the stoma guide. Cut the hole to fit the size and shape of the stoma. To reduce the risk of leakage and skin problems it is very important that the hole fits perfectly around the stoma. Cutting is easier if you use a curved pair of scissors. Ensure that the skin is clean and dry before you proceed with the application of your pouch.

Place a thumb on the white tab and pull the blue release tab away from the base plate to remove the protective film.

2

**2. Application of the base plate**

Apply the base plate around the stoma. To ensure a perfect fit around the stoma, press firmly against the skin starting at the bottom and smoothing upwards with your fingers.

3a

**3. Application of the pouch**

a: Ensure the base plate is dry and clean. (When cleaning the base plate, use only water). Then remove the protective paper from the adhesive ring of the pouch.

b: Gently place the pouch on the base plate without any pressure or pulling lining up the bottom of the pouch foam adhesive with the blue line located on the outer rim of the base plate.

Finally put light pressure on the pouch and base plate with your fingers to ensure a perfect fit around the stoma. It is possible to reposition the bag once just after application. Ensure the base plate is clean when re-applying another pouch. Close the outlet before use.

b



4

**4. Fold up outlet on Soft Cover pouch**

The outlet can be hidden in the pocket on the front to make it more comfortable and discreet.

5

**5. Drainage of urostomy pouch**

Hold the plug/end of the outlet upwards and squeeze the outer end of outlet, pull out the plug, and relax your hold on the outlet and drain the pouch. After complete drainage, ensure that the outlet is firmly closed with the plug fully inserted.

6

**6. Removal of the pouch and baseplate****Removal of pouch**

Apply light pressure to the flange with one hand and gently remove pouch with the other, pulling the blue tab.

Removal of baseplate

Hold the white removal ear and pull downwards gently.

7

**7. Coloplast Night bag**

For greater security we suggest you use the Coloplast urostomy night bag, specially designed to connect directly into the SenSura urostomy pouch. However, the SenSura urostomy pouches can be connected to all types of overnight drainage bags by using the supplied connector. The narrow end is pushed into the outlet of the SenSura urostomy pouch and the other end is connected to the night drainage system.