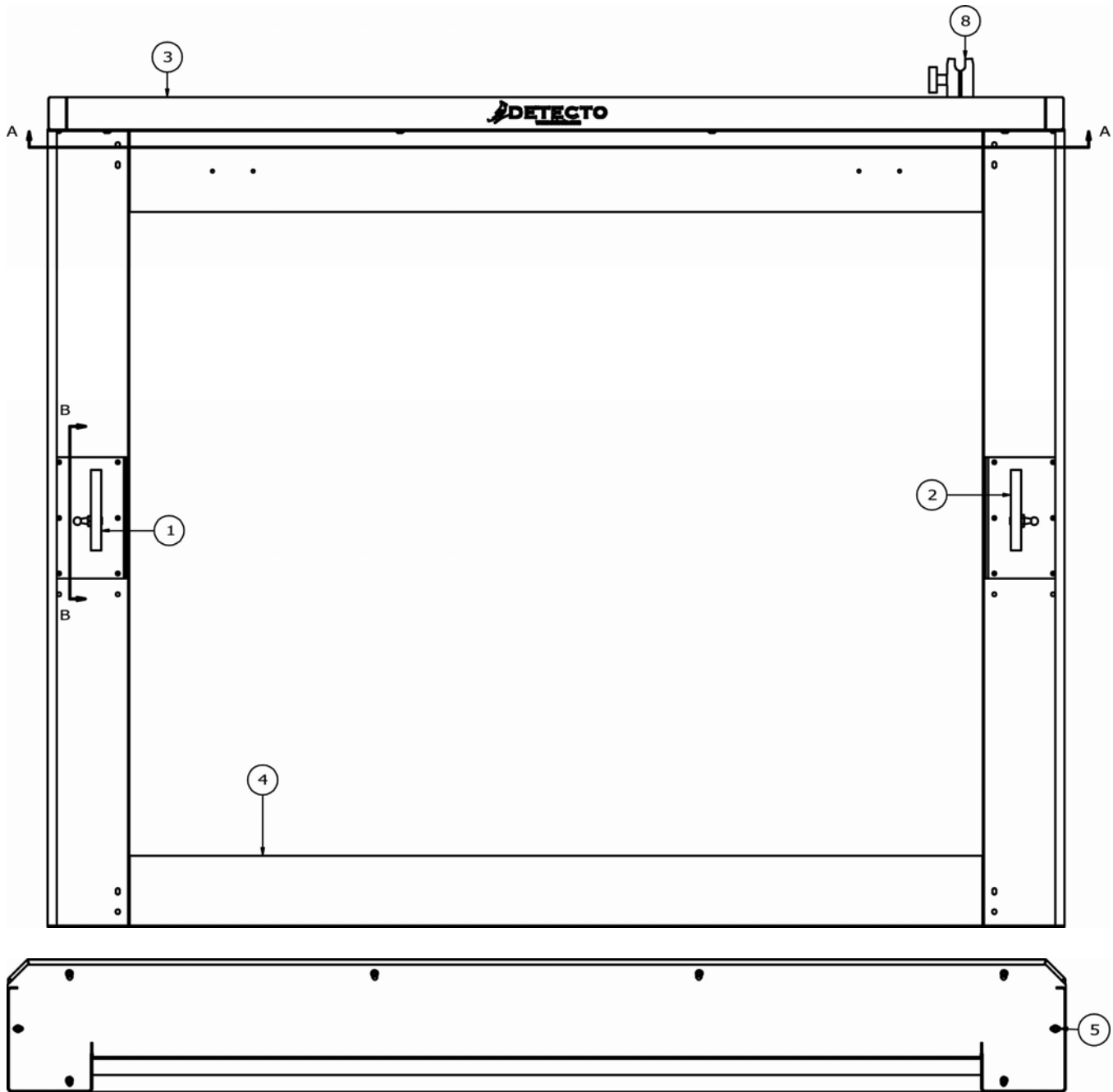


PARTS IDENTIFICATION FRAME ASSEMBLY

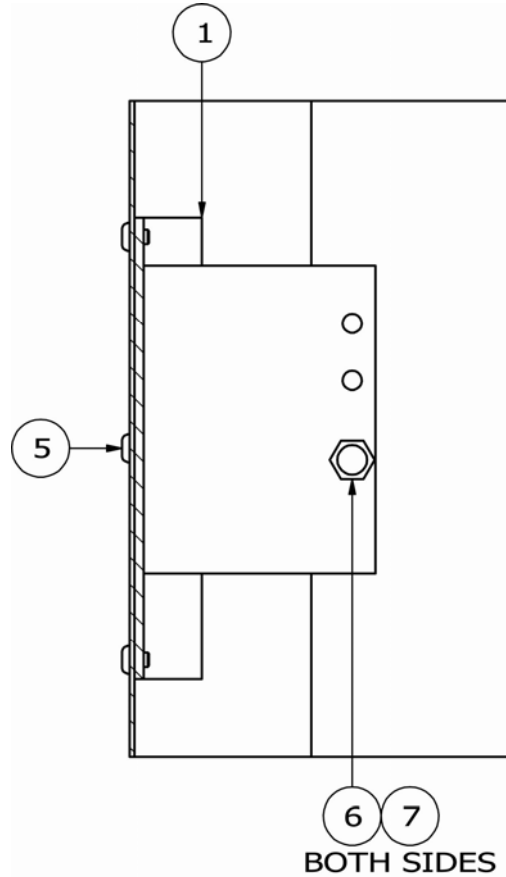


SECTION A-A

ITEM	QTY	PART NUMBER	DESCRIPTION
1	1	0065-C624-0A	CYLINDER MOUNT WELDMENT LEFT
2	1	0065-C624-1A	CYLINDER MOUNT WELDMENT RIGHT
3	1	0065-D620-08	TOP COVER
4	1	0065-D625-0A	FRAME WELDMENT
5	20	6021-2033	SCW BUTTON-HD. CAP-SCREW.. 10-32X.25
8	1	8555-B519-0A	MEDVUE MTG KIT ASSY

PARTS IDENTIFICATION

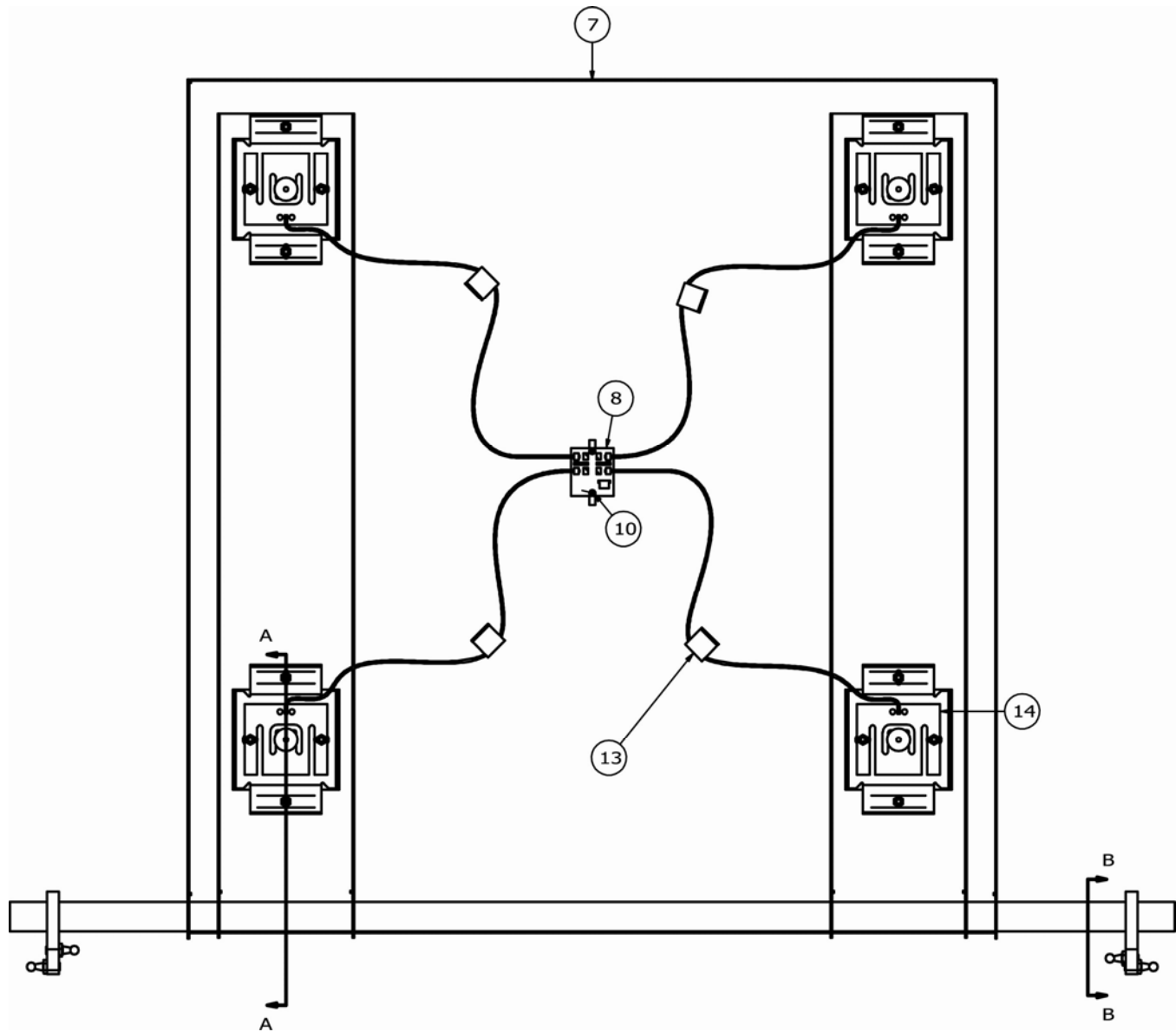
FRAME ASSEMBLY, CONT.



SECTION B-B

ITEM	QTY	PART NUMBER	DESCRIPTION
1	1	0065-C624-0A	CYLINDER MOUNT WELDMENT LEFT
5	20	6021-2033	SCW BUTTON-HD. CAP-SCREW.. 10-32X.25
6	2	6031-0220	BALL STUD, GAS SPRING, 10 MM DIA, 5/16" - 18
7	AR	6560-1125	ADHESIVE LOCTITE 242 THRDLOCKR, REMOVABLE

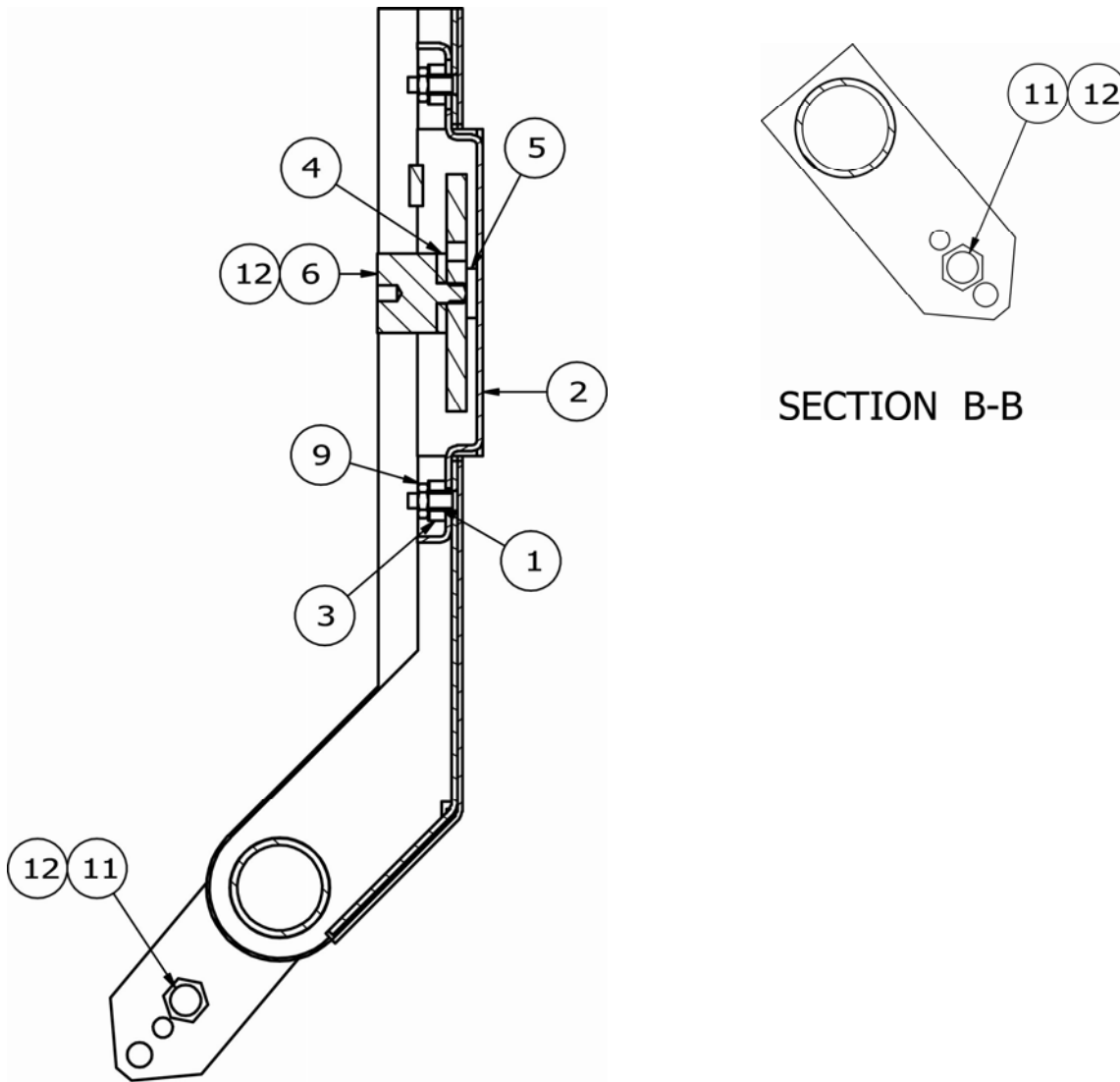
PARTS IDENTIFICATION SUPPORT TRAY ASSEMBLY



ITEM	QTY	PART NUMBER	DESCRIPTION
7	1	0065-D627-0A	SUPPORT FRAME
8	1	3502-B629-0A	PCB 7550 4 CELL TRIM BOARD
10	2	6021-0654	SCW PAN-HEAD. MACHINE-SCW 06-32X 0.25
13	4	6610-5007	CABLE CLIP, 1" X 1" GREY
14	4	FP-250	LOAD CELL, FLAT PLATE, 250 LBS

PARTS IDENTIFICATION

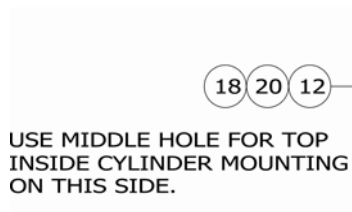
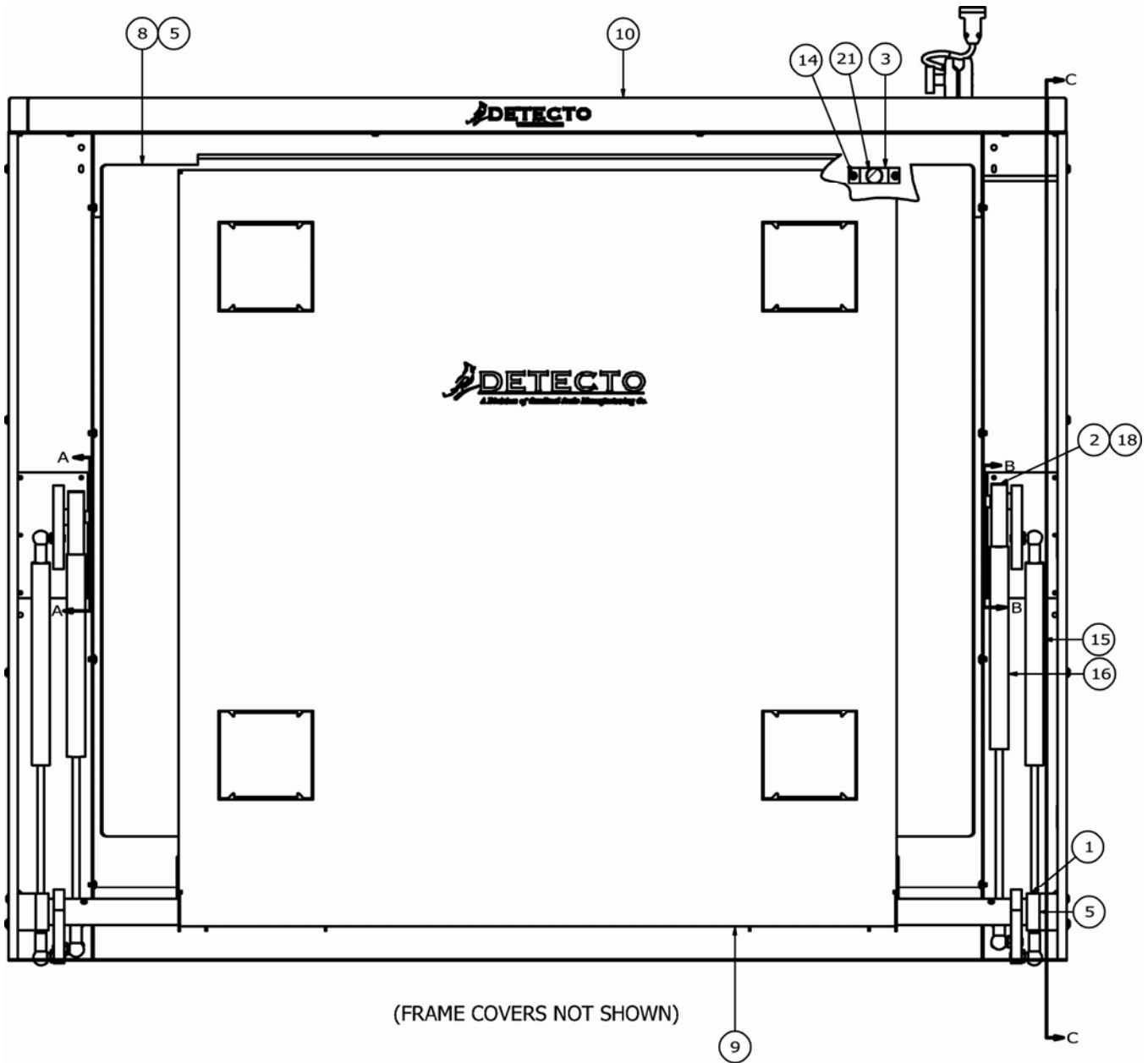
SUPPORT TRAY ASSEMBLY, CONT.



SECTION A-A

ITEM	QTY	PART NUMBER	DESCRIPTION
1	8	0031-B014-08	SPACER
2	4	0065-B632-0A	LOAD CELL FOOT WELDMENT
3	8	0065-B635-08	LOAD CELL MOUNT SPRING
4	4	0065-B636-08	LOAD CELL SPACER
5	8	0065-B637-08	LOAD CELL WASHER
6	4	0065-B642-08	WEIGHBRIDGE MOUNT, 7550
9	16	6013-0295	NUT #10-32 HEX Z/P
11	4	6031-0220	BALL STUD, GAS SPRING, 10 MM DIA, 5/16" - 18
12	AR	6560-1125	ADHESIVE LOCTITE 242 THRDLOCKR, REMOVABLE

PARTS IDENTIFICATION FINAL ASSEMBLY



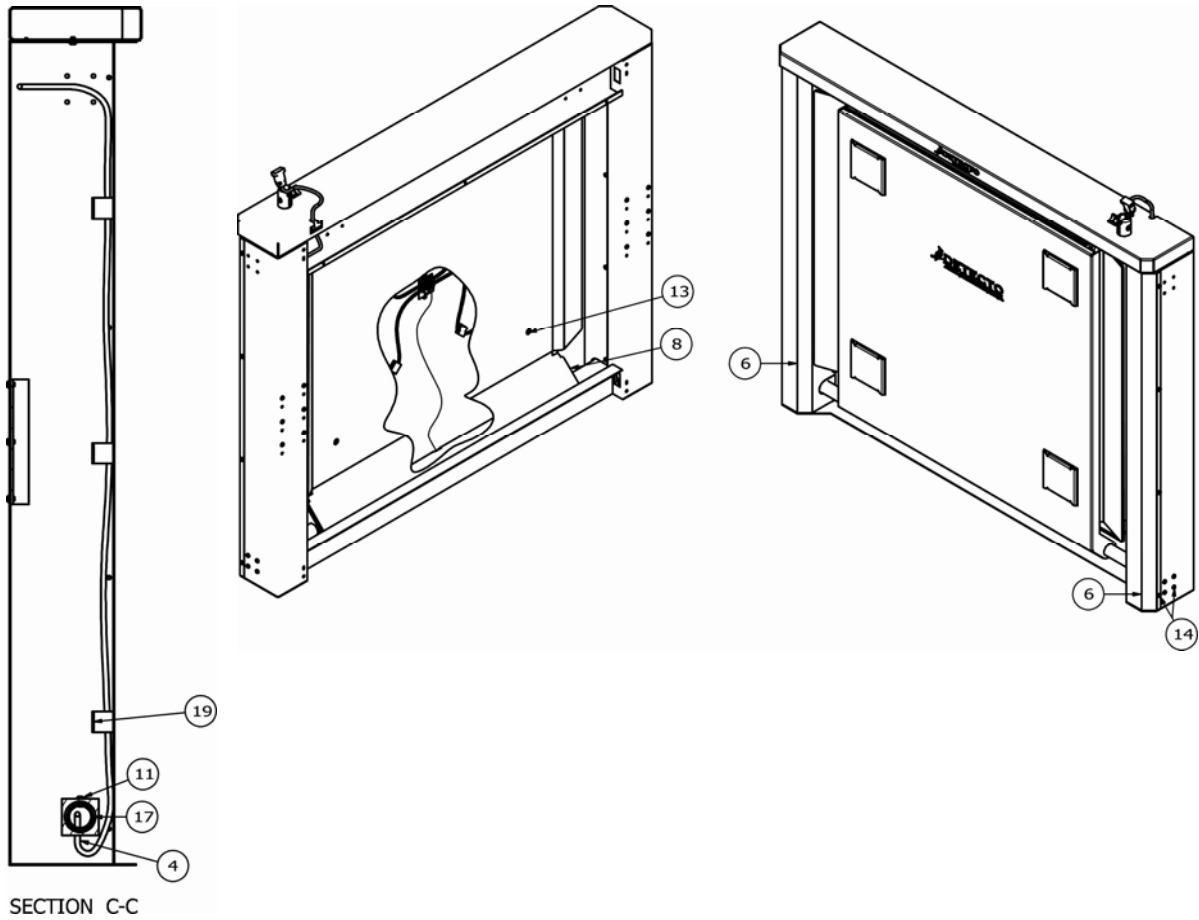
SECTION A-A



SECTION B-B

PARTS IDENTIFICATION

FINAL ASSEMBLY, CONT.

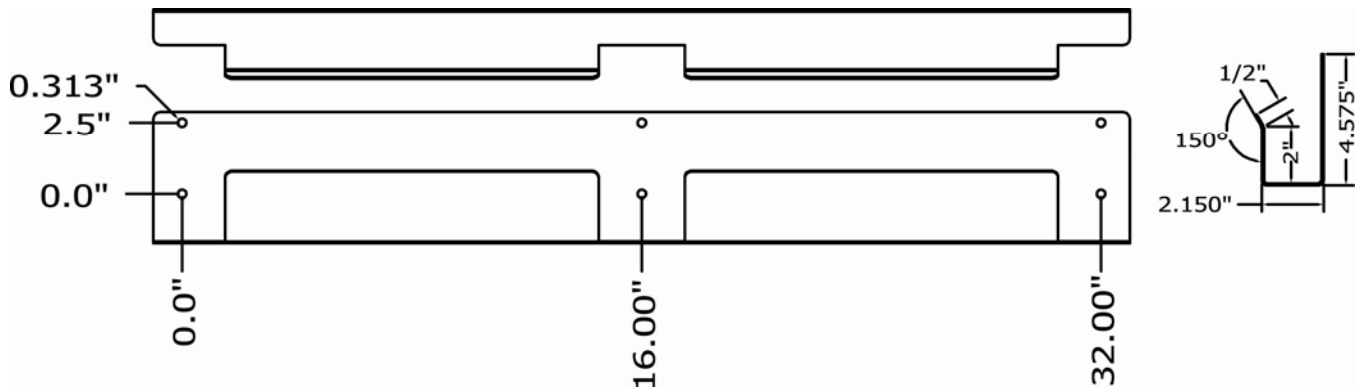


PARTS IDENTIFICATION

FINAL ASSEMBLY, CONT.

ITEM	QTY	PART NUMBER	DESCRIPTION
1	2	0065-B610-08	BUSHING
2	2	0065-B613-08	CYLINDER SLIDE
3	2	0065-B621-08	BUMPER MOUNT
4	1	0065-b638-0A	INDICATOR CABLE 7550
5	2	0065-C609-08	PIVOT BLOCK
6	2	0065-C618-08	FRAME COVER
8	1	0065-D630-08	DECK, 7550
9	1	0065-D639-0A	SUPPORT TRAY ASSEMBLY
10	1	0065-D640-0A	FRAME ASSEMBLY
11	2	6021-1058	SCW TRUSS-HEAD MACHINE-SCW 10-32X.375
12	2	6021-1246	SCW SHOULDER.. SOCKET HEAD 5/16-18X1.0"
13	4	6021-1801	SCW FLAT-HEAD. SOCKET CAP .25-20X.375 BLACK OXIDE
14	28	6021-2033	SCW BUTTON-HD. CAP-SCREW.. 10-32X.25
15	2	6031-0219	CYLINDER, GAS SPRING, 191 LBS, TWO SOCKET 8 INCH STROKE
16	2	6031-0221	CYLINDER, GAS SPRING, 191 LBS, ONE SOCKET 8 INCH STROKE
17	AR	6050-3049	GREASE, FOOD GRADE, MOLYKOTE G-4500 14OZ
18	AR	6560-1125	ADHESIVE LOCTITE 242 THRDLCR, REMOVABLE
19	3	6610-5007	CABLE CLIP, 1" X 1" GREY
20	2	6680-0021	SPACER NYLON 1.000 OD X .450 ID X .219 LONG
21	2	8529-B215-08	SUPPORT, TRAY
30*	1	0065-C641-08	MAT-DECK, 7550

* NOT SHOWN



7550 WALL MOUNT (0065-C623-08) AND HOLE SPACING