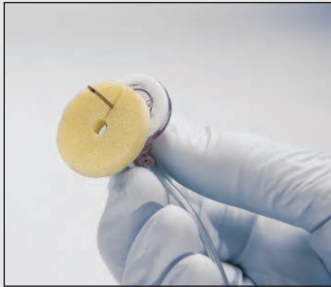
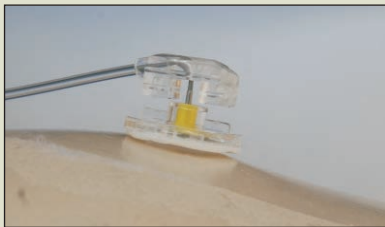




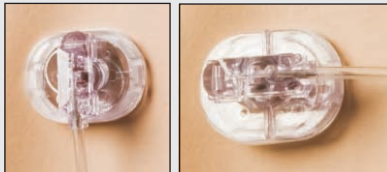
- Q** How can I prevent the safety mechanism from sliding down the needle during port access?
- A** Hold only the handle with your thumb and index finger, or with three fingers hold the handle and base during port access. Avoid pushing down on the base of the product.



- Q** Can I use the Bio-Patch* dressing with SafeStep* Huber Needle Set and/or PowerLoc* MAX Power Injectable Infusion Set?
- A** **Yes**, the Bio-Patch* dressing can be easily slipped between the skin and the Huber needle set's smooth plastic base. (Another option is to "clip" the slit of the Bio-Patch* onto the shaft of the Huber needle set's needle, being careful to keep the Bio-Patch* dressing "off center" on the needle. Once the needle is in the port the Bio-Patch* dressing can be centered around Huber needle set's needle.



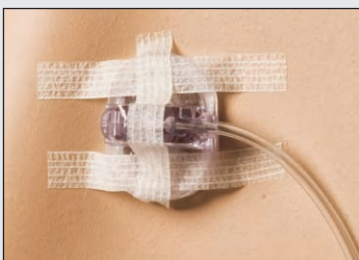
- Q** If the SafeStep* Huber Needle Set and/or PowerLoc* MAX Power Injectable Infusion Set base is not flush with the skin, may I lower the base to the skin so as to better dress the Huber needle set?
- A** **Yes**, if the needle is fully seated in the port and there is a gap between the Huber needle set's base and the skin, you may lower the base to the skin.



- Q** I have noticed the tapered head of the SafeStep* Huber Needle Set and/or PowerLoc* MAX Power Injectable Infusion Set is moveable, can I rotate the tapered head after placement for dressing purposes?
- A** **Yes**, see pictures to the left.



- Q** We use dual lumen ports. Can I use the SafeStep* Huber Needle Set and/or PowerLoc* MAX Power Injectable Infusion Set with dual lumen ports?
- A** **Yes**, the Huber needle set may be used with dual lumen ports. For convenience, turn the Huber needle set base 90° so that both tubing sets are aligned on the same

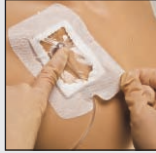


- Q** If I would like to tape down the infusion set before placing the transparent dressing over the access site, are there recommendations?
- A** **Yes**, an "H-tape" or "X-tape" are examples that may be used as additional securement to a transparent dressing



Q Do you have any suggestions for dressing the SafeStep* Huber Needle Set and/or PowerLoc* MAX Power Injectable Infusion Set?

A Dress the Huber needle set according to your institutional guidelines. Select the appropriate needle length. Use a single occlusive dressing large enough to completely cover the site and any dressing materials.



Q Removing occlusive dressings can be difficult, do you have any recommendations?

A Stretching occlusive dressings laterally and down before gently pulling up helps overcome the adhesive bond with the skin and device. Support the Huber needle set with one hand while removing the dressing.



Q Can I use the SafeStep* Huber Needle Set with a power injector?

A **No**, the SafeStep* Huber Needle Set is not indicated for power injection. The SafeStep* Huber Needle Set can be used for non power injections in any port including power ports. **Bard recommends the PowerLoc* MAX Power Injectable Infusion Set for power injection.** As stated in the Instructions for Use the PowerLoc* MAX device is indicated for use in the administration of fluids and drugs, as well as blood sampling through surgically implanted vascular ports. The PowerLoc* MAX Power Injectable Infusion Set is also indicated for power injection of contrast media into the central venous system only with an implanted port that is also indicated for power injection, such as the Bard PowerPort* device. All Bard PowerLoc* Safety Infusion Set Family* devices have been tested and verified for power injection with Bard PowerPort* devices.

Q Are the SafeStep* Huber Needle Set and the PowerLoc* MAX Power Injectable Infusion Set DEHP and Latex Free?

A **Yes**, this information is noted on the product package.

Q Are the SafeStep* Huber Needle Set and the PowerLoc* MAX Power Injectable Infusion Set MRI compatible?

A **Yes**. Non-clinical testing has demonstrated the devices are MR conditional. They can be safely scanned under:

- Static magnetic field of 3 tesla or less
- Spatial gradient field of 360 Gauss/cm or less
- Maximum specific absorption rate (SAR) of 4 W/kg for 15 minutes of scanning

In non-clinical testing, the PowerLoc* MAX Power Injectable Infusion Set produced a temperature rise of less than 1.6 degrees C at a maximum whole body averaged specific absorption rate (SAR) of 4 W/kg, as assessed by calorimetry for 15 minutes of MR scanning in a 3 Tesla Siemens Trio using software version VB15.

Q What are the maximum priming volumes and minimum gravity flow rates of the SafeStep* Huber Needle Set and PowerLoc* MAX Power Injectable Infusion Set?

SafeStep* Huber Needle Set PowerLoc* MAX Power Injectable Infusion Set	SafeStep* Huber Needle Set	PowerLoc* MAX Power Injectable Infusion Set
Minimum Gravity Flow Rate	Maximum Priming Volume	Maximum Priming Volume
19 Gauge 1680 ml/hr 20 Gauge 960 ml/hr 22 Gauge 312 ml/hr	<i>with needleless Y-site:</i> 19 Gauge .7 ml 20 Gauge .7 ml 22 Gauge .7 ml <i>without needleless Y-site:</i> 19 Gauge .3 ml 20 Gauge .3 ml 22 Gauge .3 ml	<i>with Y-site:</i> 19 Gauge .4 ml 20 Gauge .4 ml 22 Gauge .4 ml <i>without Y-site:</i> 19 Gauge .3 ml 20 Gauge .3 ml 22 Gauge .3 ml