

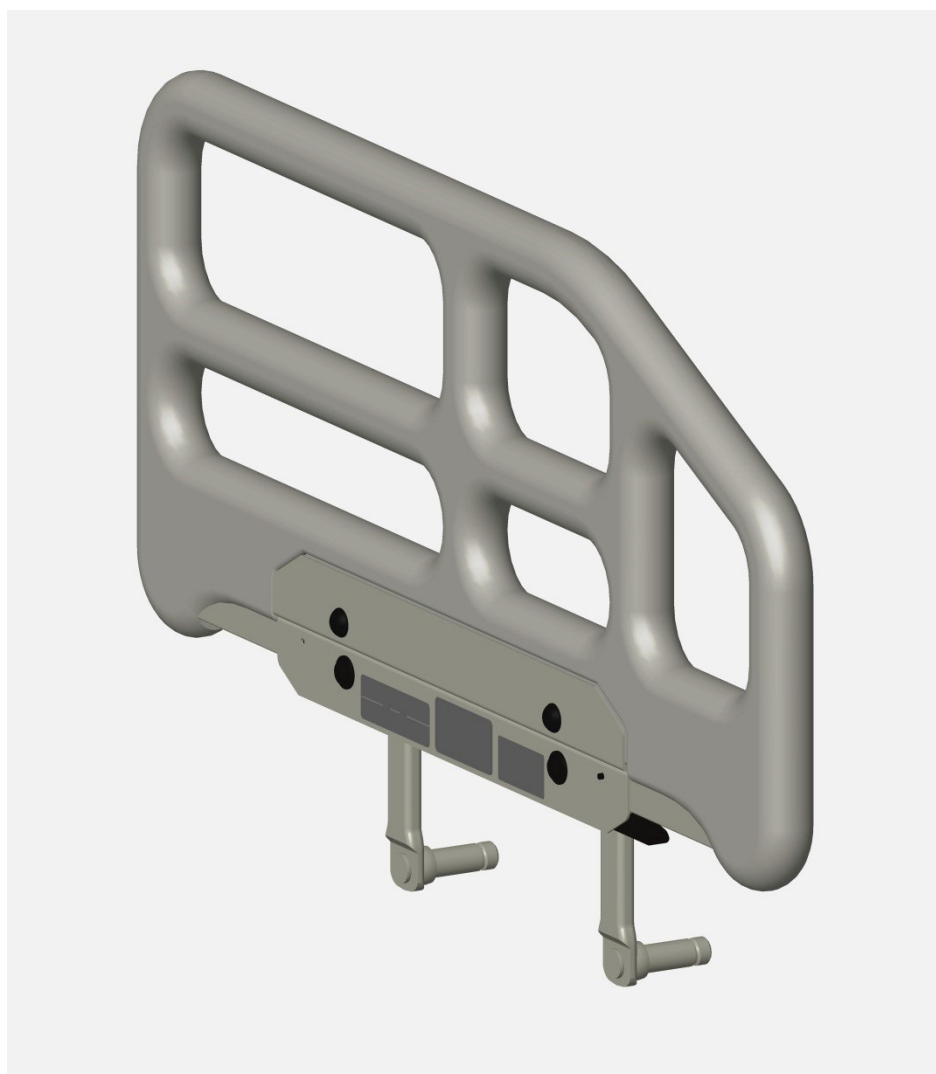


User-Service Manual

Joerns® SoftCare Rail

Model F18

To avoid injury, read user's manual before using.



Important Precautions

- ⚠ Warning:** Risk Of Serious Injury Or Death. This product is intended for use with the Joerns® EasyCare® and Care 100 beds. Use of this product on any bed it was not designed for could result in an unproven or unsafe configuration, potentially resulting in serious injury or death. For questions regarding compatibility, contact your Joerns Healthcare Representative.
- ⚠ Warning:** Risk of Serious Injury or Death. Use a properly sized mattress in order to minimize the gap between the side of the mattress and the SoftCare assist device or side rail. This gap must be small enough to prevent a resident from getting his/her head or neck caught in this location. Make sure that raising or lowering the bed, or adjusting the sleep surface, does not create hazardous gaps. Failure to do so could result in serious injury or death.
- ⚠ Warning:** Risk of Serious Injury or Death. Properly locate the mounting brackets. The gap between the head/foot panel and the SoftCare assist device or side rail must be small enough to prevent a resident from getting his/her head or neck caught in this location (see the installation instructions for more information, if applicable). If multiple assist devices are needed, position them such that the gap between them is large enough that the trunk and hips can easily pass through. Make sure that raising or lowering the bed, or adjusting the sleep surface, does not create hazardous gaps. SoftCare assist devices or side rails should not be used if ANY openings within the bed system allow a resident to get his/her head or neck lodged within these openings. Failure to do so could result in serious injury or death.
- ⚠ Warning:** Risk of Serious Injury or Death. Do not use the SoftCare assist device as an ingress or egress assist until you have verified that it is up AND locked. Injury to resident or caregiver may result if this procedure is not followed.

⚠ Warning: An optimal bed system assessment should be conducted on each resident by a qualified clinician or medical provider to ensure maximum safety of the resident. The assessment should be conducted within the context of, and in compliance with, the state and federal guidelines related to the use of restraints and bed system entrapment guidance, including the Clinical Guidance for the Assessment and Implementation of Side Rails published by the Hospital Bed Safety Workgroup of the U.S. Food and Drug Administration. Further information can be obtained at the following web address: <http://www.fda.gov/MedicalDevices/ProductsandMedicalProcedures/GeneralHospitalDevicesandSupplies/HospitalBeds/default.htm>

Maintenance/Inspection Information: Visually inspect the assist handle and mounting bracket, and check for loose hardware on a monthly basis. Tighten loose hardware as stated in the installation instructions.

⚠ Warning: In the event worn or broken part(s) are identified, remove the device from service until repairs are made.

Note: The SoftCare assist device is intended for use as an aid in entering or exiting the bed sleep area, as well as a stable handhold during self-positioning within the sleep area.

Note: The SoftCare side rails are intended to provide a physical indication of the bed edge, as well as a stable handhold during self-positioning within the sleep area.

Joerns assist devices or side rails are designed to be used with specific Joerns bed frames. Once mounted on the appropriate bed frame, assist devices or side rails become an integral part of the Joerns bed system. As such, these mounted assist devices or side rails can handle the same safe working load, within normal use conditions, of the appropriate bed to which they are mounted.

When assessing the risk for entrapment, you need to consider your bed, mattress, head/foot panels, assist devices and other accessories, as a system. It is also extremely important to review the resident's physical and mental condition and initiate an appropriate individual care plan to address entrapment risk. All Joerns bed systems are evaluated for compliance to the FDA/CDRH "Hospital Bed System Dimensional and Assessment Guidance to Reduce Entrapment."

Joerns Side Rails/Assist Devices should be assembled, installed, utilized and maintained in the manner described in their accompanying Joerns User/Service Manual. The instructions for use of these devices also list the bed type or model with which they may be used.

This product is only one part of your healthcare bed system. Proper combinations of mattress, head/foot panels and assist devices are needed to minimize the risk of entrapment. For more information, call Customer Care, 800-826-0270.

Save These Instructions

Thank you and congratulations for choosing Joerns SoftCare assist devices and side rails. Joerns Assist Devices are developed with safety, comfort and convenience of both residents/patients and caregivers in mind.

Advanced ergonomic design will provide years of reliable service in your facility.

Table of Contents

Important Precautions	2
Entrapment Information	4
SoftCare Rail Installation Instructions.....	5
SoftCare Rail Operation Instructions	6
Warranty	7

Bed System Entrapment Information

Although essential in the practice of long-term care, bedside rails, in recent years, have also been a subject of regulatory review and evolution in design and use.

That focus includes not only the challenge of achieving an appropriate balance between resident security and unnecessary restraint, but also the additional safety issue of entrapment.

The U.S. Food and Drug Administration (FDA), working with our company and other industry representatives has addressed the potential danger of entrapment with new safety guidelines for medical beds. These guidelines recommend dimensional limits for critical gaps and spaces between bed system components.

Entrapment zones involve the relationship of components often directly assembled by the healthcare facility rather than the manufacturer. Therefore, compliance is the responsibility of the facility.

As the leading manufacturer of long-term care beds and a frontrunner in addressing this critical issue, Joerns Healthcare can offer you the expertise, assistance and products to bring your facility into compliance.

Joerns® Compliance Solutions

Matching the right bed components in order to meet regulatory guidelines can be complex.

That is why Joerns offers a wide array of compliance options. We assist customers in selecting compliant accessories recommended for their specific bed model.

Creating a Safer Care Environment

While the guidelines apply to all healthcare settings, (hospitals, nursing homes and at home), long-term care facilities have particular exposure since serious entrapment events typically involve frail, elderly or dementia patients.

For More Information

To learn more about compliance options with Joerns products, visit our website at www.joerns.com, or contact our Customer Care reps at 800-826-0270 and ask for free informational publications.

To learn more about entrapment zones, assessment methods and guidelines concerning entrapment, contact Joerns Healthcare at 800-826-0270 or consult the FDA website: <http://www.fda.gov/MedicalDevices/ProductsandMedicalProcedures/GeneralHospitalDevicesandSupplies/HospitalBeds/default.htm>.

SoftCare Rail Installation Instructions EasyCare®

1. Remove plugs from holes as shown in Figure 1 for 80" bed and Figure 2 for 76" bed.
2. Insert the side rail in holes A, B, C, and D for 80" bed (Figure 3) and in holes E, F, G, and H for 76" bed (Figure 4).
3. Attach mounting clips from the bed to the side rail.

Maintenance/Inspection Information: Visually inspect the assist handle and mounting bracket, and check for loose hardware on a monthly basis. Tighten loose hardware as stated in the installation instructions.

⚠ Warning: In the event worn or broken part(s) are identified, remove the device from service until repairs are made.

Note: Assist devices are made for right or left side of bed as viewed from the foot of the bed. The latch on both assist devices must face toward the center of the bed, so they operate properly.

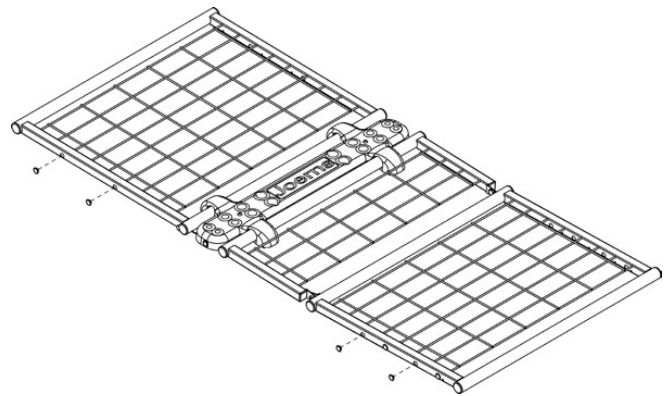


Figure 1

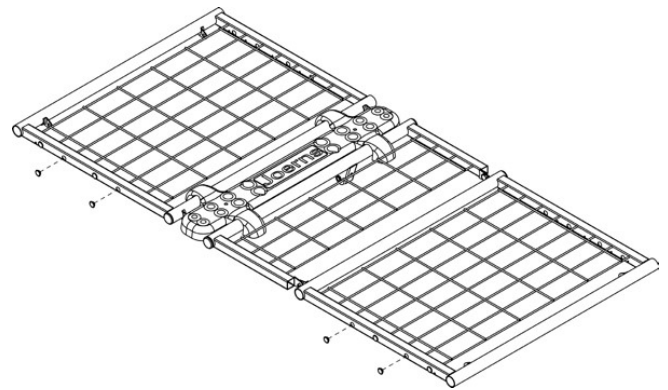


Figure 2

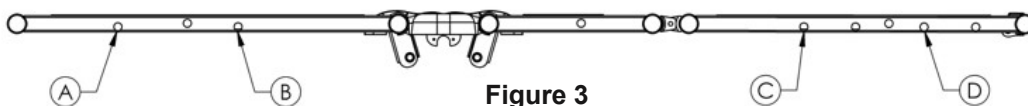


Figure 3

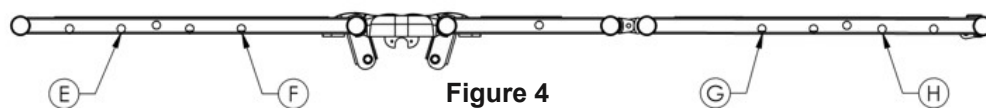


Figure 4

SoftCare Rail Operation Instructions

1. From the “Locked” position (Figure 5), hold the rail and depress the Latch Release to unlock. Rotate rail towards the center of the bed until it reaches the “Unlocked” position. (Figure 6).
2. To latch rail, from the “Unlocked” position (Figure 6), hold the rail and rotate it into the “Locked” position. Make sure the Latch Release is engaged; verify that the rail is locked before use.

Cleaning

The SoftCare Rail is easily cleaned with a mild solution of antiseptic cleaner and warm water. Read and follow all label instructions on your cleaning products.

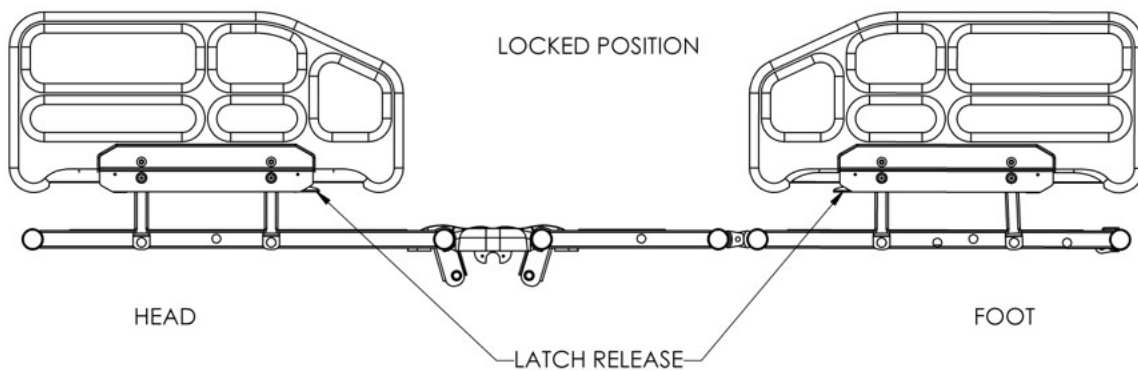


Figure 5

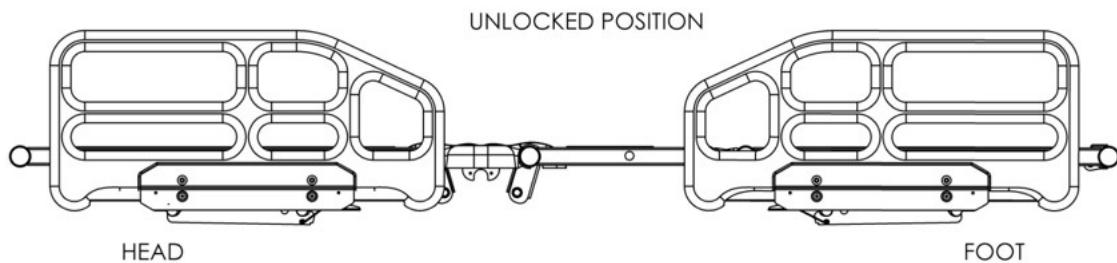


Figure 6

Joerns Healthcare Warranty Program for all Joerns Assist Device and Side Rails

Joerns assist devices and side rails are guaranteed for a period of 12 months from the date of delivery against defects in materials and workmanship under normal use and service.

Steel structural components and welds are covered under warranty for a period of 10 years from the date of delivery.

Damage caused by use in unsuitable environmental conditions, abuse or failure to maintain the product in accordance with user and service instructions is not covered.

Any alteration, modification, or repair unless performed by or authorized in writing by Joerns Healthcare, will void this warranty.

Parts

This warranty does not apply to damage or defects caused by misuse, incorrect handling or installation by a non-authorized installer. Damage caused by use in unsuitable environmental conditions or failure to maintain the product in accordance with user and service instructions is not covered.

The product contains various parts that wear from normal use. These parts, such as plastic bushings, are not covered under the 12-month warranty, but are covered for 90 days after purchase of product.

Joerns Healthcare's obligation under this warranty is limited to supplying replacement parts, servicing or replacing, at its option, any product which is found by Joerns Healthcare to be defective.

Warranty replacement parts are covered by the terms of this warranty until the product's original warranty period expires.

When requested by Joerns Healthcare, parts must be returned for inspection at the customer's expense. Credit will be issued only after inspection.

Service

Most service requests can be handled by the facility Maintenance Department with assistance from the Joerns Healthcare Product Service Department.

Most parts requested can be shipped next day air at the customer's expense.

Should a technician be required, one will be provided by Joerns Healthcare, at our discretion. Only the Joerns Healthcare Product Service Department can dispatch authorized technicians.

This warranty is extended to the original purchaser of the equipment.

Post Acute, Acute, HomeCare
2430 Whitehall Park Dr. Ste 100
Charlotte, NC 28273
(P) 800.826.0270
(F) 800.457.8827

VA/Government
19748 Dearborn Street
Chatsworth, CA 91311
(P) 800.966.6662
(F) 800.232.9796

Canadian Office
1000 Clarke Rd. Ste 6
London, ON Canada N5V 3A9
(P) 866.546.1151
(F) 519.451.8662

**United Kingdom and
Other Countries**
+44 (0)844 811 1156
+44 (0)844 811 1157

Netherlands
+31 (0)30 6363700
+31 (0)30 6363799