

PM4150 Replacement Parts ID

506707 - Bag



506750
DC
Power Supply

506760
External
Battery

506629
AC
Power Supply

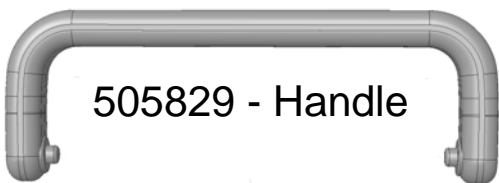
507303 - Back Pack Bag



506961 - AC Power Cord (USA)
507285 - AC Power Cord (EU)



504833 - Cannula



505829 - Handle

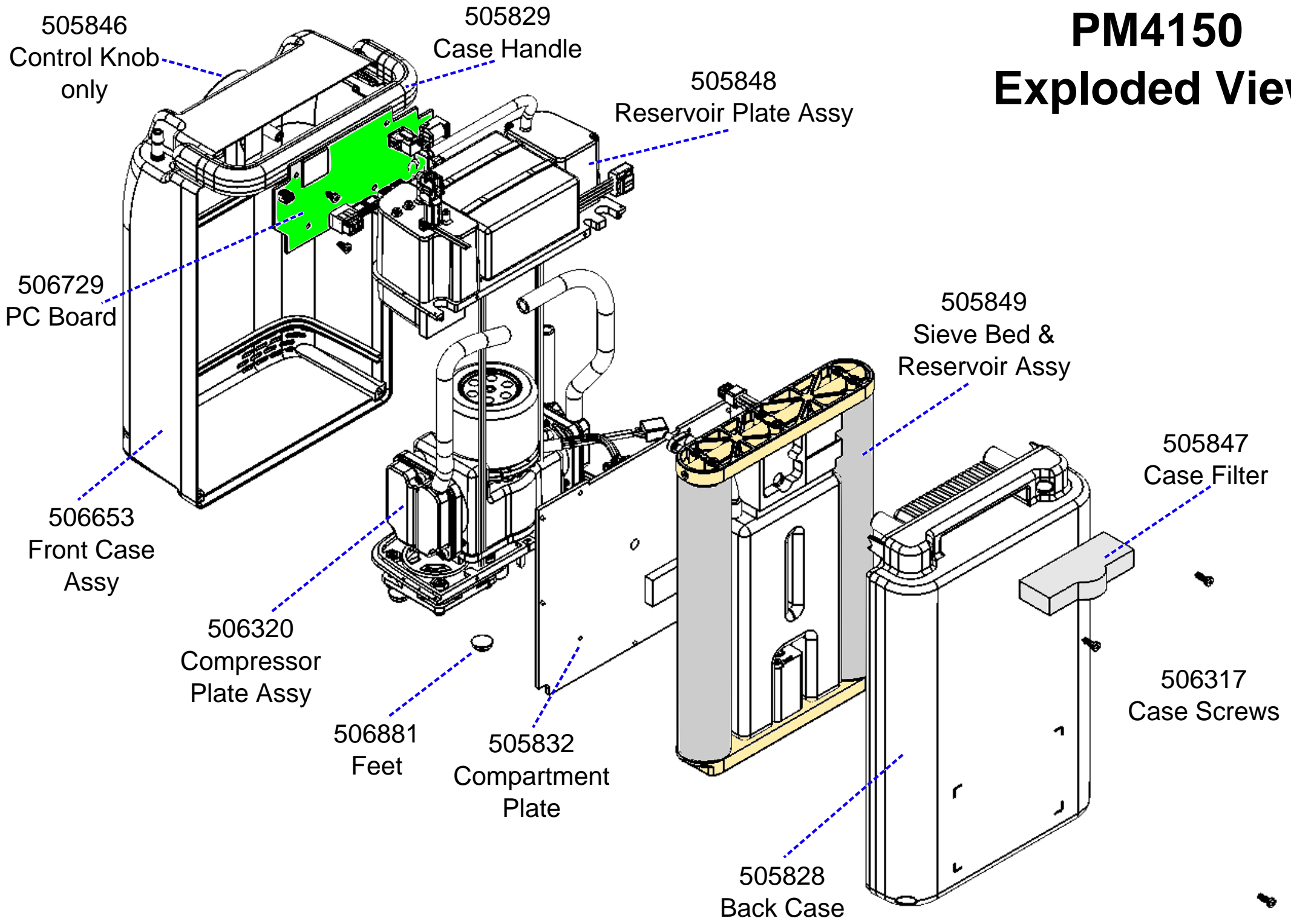


505846 - Knob



505847 - Inlet Filter

PM4150 Exploded View



COMPONENT DESCRIPTION

⚠ CAUTION

Missing or illegible labels must be replaced, contact Precision Medical, Inc.

