

# CYMED<sup>®</sup>

life without limitations



[www.cymedostomy.com](http://www.cymedostomy.com)

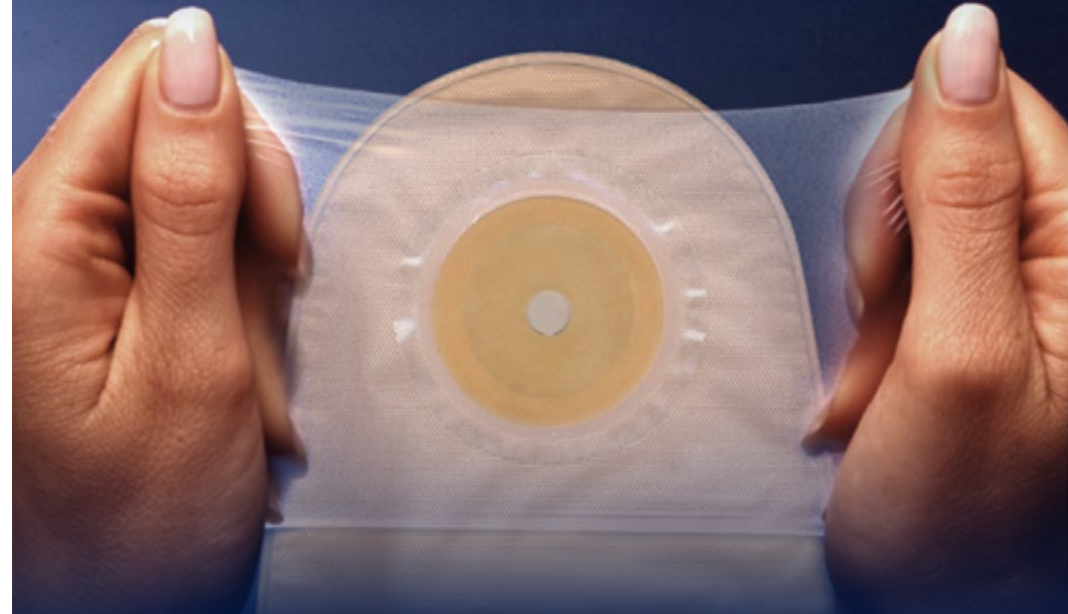
OSTOMY POUCHING SYSTEMS  
2015–2016 PRODUCT CATALOG

## CYMED

### OSTOMY POUCHING SYSTEMS

- What is MicroSkin®? ..... 3
- Benefits of MicroSkin ..... 4
- Testimonials ..... 5
- Urostomy Pouching Systems ..... 6
- Colostomy One-Piece Pouching Systems ..... 8
- Colostomy Two-Piece Pouching Systems ..... 12
- Ileostomy One-Piece Pouching Systems ..... 14
- Ileostomy Two-Piece Pouching Systems ..... 16
- Pediatric Pouching Systems ..... 17
- Accessories ..... 18
- Basic Steps for MicroSkin® Application ..... 20
- Tips and Tricks ..... 21
- Frequently Asked Questions ..... 22

# What is MICROSKIN®?



The MicroSkin Adhesive Barrier is the only part of the appliance that actually adheres to your skin, keeping the pouch attached to your body. MicroSkin is made of a latex-free, hypo-allergenic, poly-urethane polymer film.

Designed with an emphasis on comfort and durability, at just  $\frac{1}{1000}$  of an inch thick and the ability to stretch up to 500%, the MicroSkin barrier accomplishes a comfort unparalleled with any other pouching system on the market.

MicroSkin already has a well-established reputation of strength and durability, both in the water and under extreme situations, which has made it a favorite among active ostomates; yet the comfort and dependability can be enjoyed by any ostomate.





## THE MICROSKIN® ADHESIVE BARRIER



MicroSkin® is barely visible when in place around your stoma. It stretches and moves with you.

- ▶ **BREATHABLE:** air and perspiration pass through the MicroSkin®, but fluid and bacteria cannot. This allows your skin to heal and maintain itself naturally, helping prevent against skin breakdown and irritation.
- ▶ **WATERPROOF:** since fluids can't enter MicroSkin®, security can be maintained while bathing or swimming.
- ▶ **THIN:** extremely Low-Profile, measuring just  $\frac{1}{1000}$  of an inch, MicroSkin® comfortably contours and stretches with your body's natural curves and movements.
- ▶ **DEPENDABLE:** proven under the most demanding conditions: John Dermengian (Ileostomate) wore the same MicroSkin® pouch as he competed in the 2003 Ironman Triathlon in Hawaii.

## THE CYMED HYDROCOLLOID WASHER

Washers provide extra protection and support to the skin surrounding the stoma without sacrificing comfort. Naturally extracted from citrus peels, Cymed's washers are a specially formulated pectin-based hydrocolloid. Washers can provide some absorption and longer wear time for wounds, as well as providing some minor convexity for recessed stomas.

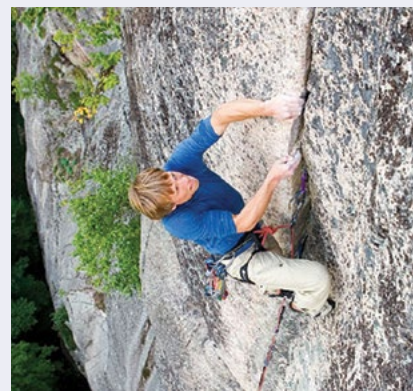
- ▶ MicroSkin® barriers are available with integrated washers, or can be purchased separately.
- ▶ **Sizes:** available in **Cut-to-Fit** or in any of our **Pre-cut** sizes.
- ▶ **Thickness:** available as either **Thin** (1mm) or **Thick** (2mm).
- ▶ **Large-size:** cut-to-fit up to 2 $\frac{1}{2}$ " (64mm)

Thin Washer

use for  
**Colostomy  
Urostomy**

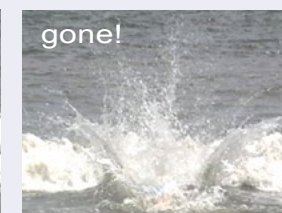
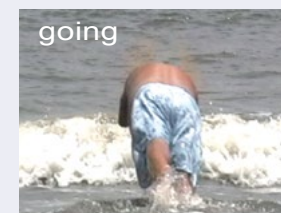
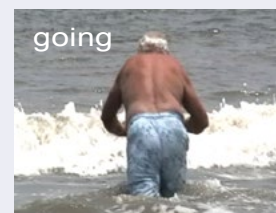
Thick Washer

use for  
**Ileostomy  
Colostomy with  
liquid output  
Urostomy**



**Ben Moon** was diagnosed with colorectal cancer at the age of 29. Now with a permanent colostomy, he is back to doing all of the things he loves. He makes a living as an adventure photographer (his Web site is [moonfoto.com](http://moonfoto.com)) and he enjoys surfing, climbing, and yoga. All of these sports demand a lot from an ostomy appliance. Ben uses Cymed's MicroSkin® pouches. He says, "No other product on the market even remotely works in the water the way MicroSkin® does."

**Frank Luciano** was diagnosed with bladder cancer in 2005. His wife Janet was a great support system for him for the first year. Now Frank has it down and can change his urostomy pouch in 2 minutes!



Frank's stoma is flush with his skin—and he has a hernia. The MicroSkin® urostomy pouch #86300 is ideal for this situation. This pouch stays in place for Frank even with a daily swim, golf, and tending his favorite hibiscus.



**John Dermengian**, an Ironman triathlete, uses MicroSkin® Ostomy Pouches for his ileostomy. John finished the grueling Ironman Triathlon in Hawaii in October of 2003. He swam 2.4 miles, rode 112 miles on his bicycle and then ran 26.2 miles. John's MicroSkin® ostomy pouch crossed the finish line and kept going for three more days!



## 9" CLEAR UROSTOMY POUCH

Box of 10  
HCPCS A4391

- ▶ MicroSkin® Adhesive Barrier
- ▶ Anti-Reflux Design
- ▶ Includes Two Night Drainage Connectors
- ▶ Snap Cap Closure

Stoma Size	Plain barrier	Thin washer	Thick washer
<b>Cut-to-fit</b> up to 1 <sup>3</sup> / <sub>4</sub> " (45mm)	86300*	86300W	86300E
<b>Pre-cut</b> for <sup>3</sup> / <sub>4</sub> " (19mm)	86319		
<b>Pre-cut</b> for <sup>7</sup> / <sub>8</sub> " (22mm)	86322	86322W	86322E
<b>Pre-cut</b> for 1" (25mm)	86325	86325W	86325E
<b>Pre-cut</b> for 1 <sup>1</sup> / <sub>8</sub> " (29mm)	86329	86329W	86329E
<b>Pre-cut</b> for 1 <sup>1</sup> / <sub>4</sub> " (32mm)	86332	86332W	86332E
<b>Pre-cut</b> for 1 <sup>3</sup> / <sub>8</sub> " (35mm)		86335W	86335E
<b>Pre-cut</b> for 1 <sup>1</sup> / <sub>2</sub> " (38mm)		86338W	86338E

\*Plain barriers are cut <sup>1</sup>/<sub>8</sub>" larger than stoma size to ensure that the transparent film does not push on the stoma in any way. Cut-to-fit for Stomas up to 1 <sup>3</sup>/<sub>4</sub>" (45mm)



## 11" LARGE-SIZE CLEAR UROSTOMY POUCH WITH LARGE PLAIN BARRIER

Box of 10  
HCPCS A4391

- ▶ Large-Size MicroSkin® Adhesive Barrier
- ▶ Anti-Reflux Design
- ▶ Includes Two Night Drainage Connectors
- ▶ Snap Cap Closure

Stoma Size	Plain barrier
<b>Cut-to-fit</b> for Stomas up to 2 <sup>1</sup> / <sub>2</sub> " (64 mm)	86800X*

\* Large Barrier washer now available separately. (See pg. 18 for more details)



## CYMED NIGHT DRAIN ADAPTOR

3 tubes/package  
HCPCS A9900

- ▶ EZ grip molded design
- ▶ For use with urostomy pouching system

Two standard night drainage connectors are included in every box of urostomy pouches.

87000

## USEFUL TIPS FOR UROSTOMY USERS

### ▶ How does Cymed's urostomy pouch connect to overnight drainage?

Our night drainage connector is a vinyl surgical tube that pushes on to the end of the pouch and to the overnight drainage bag. A molded adaptor with a wider diameter, for a more custom fit, is also available (87000).

### ▶ Do Cymed's urostomy pouches work with a flush or recessed stoma?

Yes, the urine simply flows over the skin-like MicroSkin and there is no need for convexity. The MicroSkin® Plain Barrier or the barrier with the thin washer are appropriate for a flushed or recessed stoma.

**ONE-PIECE 11" PRESS 'N SEAL DRAINABLE POUCH**



**Press 'n Seal Closure  
(Similar to Velcro®)**  
Simply fold up the pouch  
5 times and press the locking  
flap for a secure closure.

Box of 10

▶ MicroSkin® Adhesive Barrier

Stoma Size	Plain barrier	Thin washer	Thin washer and Charcoal filter
<b>Cut-to-fit</b> up to 1 3/4" (45mm)	81100V	81300V	81400V
<b>Pre-cut</b> for 7/8" (22mm)		81322V	81422V
<b>Pre-cut</b> for 1" (25mm)		81325V	81425V
<b>Pre-cut</b> for 1 1/8" (29mm)		81329V	81429V
<b>Pre-cut</b> for 1 1/4" (32mm)		81332V	81432V
<b>Pre-cut</b> for 1 3/8" (35mm)		81335V	81435V
<b>Pre-cut</b> for 1 1/2" (38mm)		81338V	81438V

HCPCS A4388

HCPCS A4388

HCPCSA4424

**ONE-PIECE 11" DRAINABLE POUCH WITH PLAIN BARRIER**

Box of 10

HCPCS A4388



▶ MicroSkin® Adhesive Barrier

Stoma Size	Clear pouch	Opaque pouch
<b>Cut-to-fit</b> up to 1 3/4" (45mm)	81100	81120

**ONE-PIECE 11" DRAINABLE POUCH**

Box of 10

HCPCS A4388



▶ MicroSkin® Adhesive Barrier  
▶ Thin washer

Stoma Size	Clear pouch	Opaque pouch
<b>Cut-to-fit</b> up to 1 3/4" (45mm)	81300	81400
<b>Pre-cut</b> for 7/8" (22mm)	81322	81422
<b>Pre-cut</b> for 1" (25mm)	81325	81425
<b>Pre-cut</b> for 1 1/8" (29mm)	81329	81429
<b>Pre-cut</b> for 1 1/4" (32mm)	81332	81432
<b>Pre-cut</b> for 1 3/8" (35mm)	81335	81435
<b>Pre-cut</b> for 1 1/2" (38mm)	81338	81438



**ONE-PIECE 11" DRAINABLE POUCH WITH FILTER**

Box of 10  
**HCPCS A4424**

- ▶ MicroSkin® Adhesive Barrier
- ▶ Thin washer
- ▶ Charcoal Filter

Stoma Size	Clear pouch	Opaque pouch
<b>Cut-to-fit</b> up to 1 3/4" (45mm)	81300F	81400F
<b>Pre-cut</b> for 7/8" (22mm)	81322F	81422F
<b>Pre-cut</b> for 1" (25mm)	81325F	81425F
<b>Pre-cut</b> for 1 1/8" (29mm)	81329F	81429F
<b>Pre-cut</b> for 1 1/4" (32mm)	81332F	81432F
<b>Pre-cut</b> for 1 3/8" (35mm)	81335F	81435F
<b>Pre-cut</b> for 1 1/2" (38mm)	81338F	81438F



**ONE-PIECE 9" DRAINABLE POUCH WITH PLAIN BARRIER**

Box of 10  
**HCPCS A4388**

- ▶ MicroSkin® Adhesive Barrier

Stoma Size	Clear pouch	Opaque pouch
<b>Cut-to-fit</b> up to 1 3/4" (45mm)	41100	41120



**ONE-PIECE 9" DRAINABLE POUCH**

Box of 10  
**HCPCS A4388**

- ▶ MicroSkin® Adhesive Barrier
- ▶ Thin washer

Stoma Size	Clear pouch	Opaque pouch
<b>Cut-to-fit</b> up to 1 3/4" (45mm)	41300	41400
<b>Pre-cut</b> for 7/8" (22mm)	41322	41422
<b>Pre-cut</b> for 1" (25mm)	41325	41425
<b>Pre-cut</b> for 1 1/8" (29mm)	41329	41429
<b>Pre-cut</b> for 1 1/4" (32mm)	41332	41432
<b>Pre-cut</b> for 1 3/8" (35mm)	41335	41435
<b>Pre-cut</b> for 1 1/2" (38mm)	41338	41438



**ONE-PIECE 8" CLOSED-END POUCH**

Box of 10  
**HCPCS A4416**

- ▶ MicroSkin® Adhesive Barrier
- ▶ Charcoal Filter
- ▶ Opaque pouch

Stoma Size	Plain barrier	Thin washer
<b>Cut-to-fit</b> up to 1 3/4" (45mm)	85400	85401*

\*This product is available in pre-cut sizes



**TWO-PIECE SYSTEM BARRIERS**

Box of 5

HCPCS A4410

- ▶ MicroSkin® Adhesive Barrier
- ▶ Universal flange works with all Cymed two-piece pouches (except 68364 and 68464)

Stoma Size	Plain barrier	Thin washer	Thick washer
Cut-to-fit up to 1 3/4" (45mm)	58100	58000	78000
Pre-cut for 7/8" (22mm)		58022	78022
Pre-cut for 1" (25mm)		58025	78025
Pre-cut for 1 1/8" (29mm)		58029	78029
Pre-cut for 1 1/4" (32mm)		58032	78032
Pre-cut for 1 3/8" (35mm)		58035	78035
Pre-cut for 1 1/2" (38mm)		58038	78038

**TWO-PIECE DRAINABLE POUCH OPTIONS**

Box of 10

HCPCS A5063

▶ For use with all regular Cymed two-piece Barriers

11" pouch	9" pouch	11" pouch	11" pouch
78345 Clear	41345 Clear	78445V Press 'n Seal Closure	51445V Press 'n Seal Closure with filter
78445 Opaque	41445 Opaque		



**TWO-PIECE LARGE-SIZE DRAINABLE SYSTEM**

- ▶ Barrier cut-to-fit for stomas up to 2 1/2" (64 mm)
- ▶ MicroSkin® Adhesive Barrier
- ▶ 11" pouch

\*Large Barrier washer now available separately. (See pg. 18 for more details)

68100

68464

Box of 5

Box of 10

HCPCS A4415

HCPCS A5063

**TWO-PIECE CLOSED-END POUCH OPTIONS**

Stoma Cap	6" pouch	8" pouch
Includes absorbent liner and Charcoal Filter		
25645	35645	55645
Box of 15	Box of 10	Box of 15
HCPCS A4419	HCPCS A4419	HCPCS A4419

- ▶ For use with all regular Cymed two-piece Barriers
- ▶ Opaque

**TWO-PIECE SYSTEM IRRIGATION SLEEVE**

Box of 10

HCPCS A4397

- ▶ For use with all regular Cymed two-piece Barriers

59345







## ONE-PIECE 11" DRAINABLE POUCH Box of 10 HCPCS A4388

- ▶ MicroSkin® Adhesive Barrier
- ▶ Thick washer

Stoma Size	Clear pouch	Opaque pouch
Cut-to-fit up to 1 3/4" (45mm)	78300	78400
Pre-cut for 7/8" (22mm)	78322	78422
Pre-cut for 1" (25mm)	78325	78425
Pre-cut for 1 1/8" (29mm)	78329	78429
Pre-cut for 1 1/4" (32mm)	78332	78432
Pre-cut for 1 3/8" (35mm)	78335	78435
Pre-cut for 1 1/2" (38mm)	78338	78438



## ONE-PIECE 9" DRAINABLE POUCH Box of 10 HCPCS A4388

- ▶ MicroSkin® Adhesive Barrier
- ▶ Thick washer

Stoma Size	Clear pouch	Opaque pouch
Cut-to-fit up to 1 3/4" (45mm)	48300	48400
Pre-cut for 7/8" (22mm)	48322	48422
Pre-cut for 1" (25mm)	48325	48425
Pre-cut for 1 1/8" (29mm)	48329	48429
Pre-cut for 1 1/4" (32mm)	48332	48432
Pre-cut for 1 3/8" (35mm)	48335	48435
Pre-cut for 1 1/2" (38mm)	48338	48438



**Press 'n Seal Closure**  
(Similar to Velcro®)  
Simply fold up the pouch 5 times and press the locking flap for a secure closure.

## ONE-PIECE 11" DRAINABLE POUCH Box of 10 HCPCS A4388

- ▶ MicroSkin® Adhesive Barrier
- ▶ Thick washer
- ▶ Press 'n Seal Closure

Stoma Size	
Cut-to-fit up to 1 3/4" (45mm)	78400V
Pre-cut for 7/8" (22mm)	78422V
Pre-cut for 1" (25mm)	78425V
Pre-cut for 1 1/8" (29mm)	78429V
Pre-cut for 1 1/4" (32mm)	78432V
Pre-cut for 1 3/8" (35mm)	78435V
Pre-cut for 1 1/2" (38mm)	78438V



## THE ORIGINAL ILE-SORB® HCPCS A4422

Soluble absorbent granule packets for ileostomy effluent. The Original ILE-SORB® granules absorb the ileostomy fluid and evenly distribute the weight.

- ▶ Keeps effluent away from barrier—can increase wear time
- ▶ Plastic film packet enclosing the granules dissolves inside pouch
- ▶ Makes emptying more manageable
- ▶ Increases security

87210 90 packets  
87230 135 packets





## TWO-PIECE SYSTEM BARRIER WITH THICK WASHER

Box of 5

HCPCS A4410

- ▶ MicroSkin® Adhesive Barrier
- ▶ Universal flange works with all Cymed two-piece pouches (except 68364 and 68464)

Stoma Size	
Cut-to-fit up to 1 3/4" (45mm)	78000
Pre-cut for 7/8" (22mm)	78022
Pre-cut for 1" (25mm)	78025
Pre-cut for 1 1/8" (29mm)	78029
Pre-cut for 1 1/4" (32mm)	78032
Pre-cut for 1 3/8" (35mm)	78035
Pre-cut for 1 1/2" (38mm)	78038

## TWO-PIECE DRAINABLE POUCH OPTIONS

Box of 10

HCPCS A5063

11" pouch	9" pouch	11" pouch	11" pouch
-----------	----------	-----------	-----------



78345 Clear



41345 Clear



78445V  
Press 'n Seal  
Closure



51445V  
Press 'n Seal  
Closure with filter

78445 Opaque    41445 Opaque



68100

Box of 5

HCPCS A4415



68464

Box of 10

HCPCS A5063

## TWO-PIECE LARGE-SIZE DRAINABLE SYSTEM

- ▶ Barrier cut-to-fit for stomas up to 2 1/2" (64 mm)
- ▶ MicroSkin® Adhesive Barrier
- ▶ 11" pouch

\*Large Barrier washer now available separately. (See pg. 18 for more details)



## ONE-PIECE 7" UROSTOMY/FISTULA POUCH

Box of 10

HCPCS A4391

- ▶ MicroSkin® Adhesive Barrier
- ▶ Anti-Reflux Design
- ▶ Supplied with Two Drainage Adapters

Stoma Size	Plain barrier	Thin washer
Cut-to-fit up to 1 3/4" (45mm)	86400	86400W



## ONE-PIECE 7" DRAINABLE POUCH OPTIONS

Box of 10

HCPCS A4424

- ▶ MicroSkin® Adhesive Barrier
- ▶ Charcoal Filter
- ▶ Cut-to-fit up to 1 3/4" (45mm)

	Plain barrier	Thin washer	Thick washer
Clear pouch	81520	81520W	78520
Opaque pouch	81530	81530W	78530

## ONE-PIECE 9" DRAINABLE POUCH OPTIONS

Cut-to-fit Clear with Plain Barrier	41100	Box of 10	HCPCS A4388	(*details on page 10)
Cut-to-fit Clear with Thin Washer	41300	Box of 10	HCPCS A4388	(*details on page 11)
Cut-to-fit Clear with Thick Washer	48300	Box of 10	HCPCS A4388	(*details on page 14)
Cut-to-fit Opaque with Plain Barrier	41200	Box of 10	HCPCS A4388	(*details on page 10)
Cut-to-fit Opaque with Thin Washer	41400	Box of 10	HCPCS A4388	(*details on page 11)
Cut-to-fit Opaque with Thick Washer	48400	Box of 10	HCPCS A4388	(*details on page 15)

## TWO-PIECE BARRIER OPTIONS

Plain Barrier	58100	Box of 5	HCPCS A4410	(*details on page 12)
Barrier with Thin Washer	58000	Box of 5	HCPCS A4410	(*details on page 12)
Barrier with Thick Washer	78000	Box of 5	HCPCS A4410	(*details on page 12)

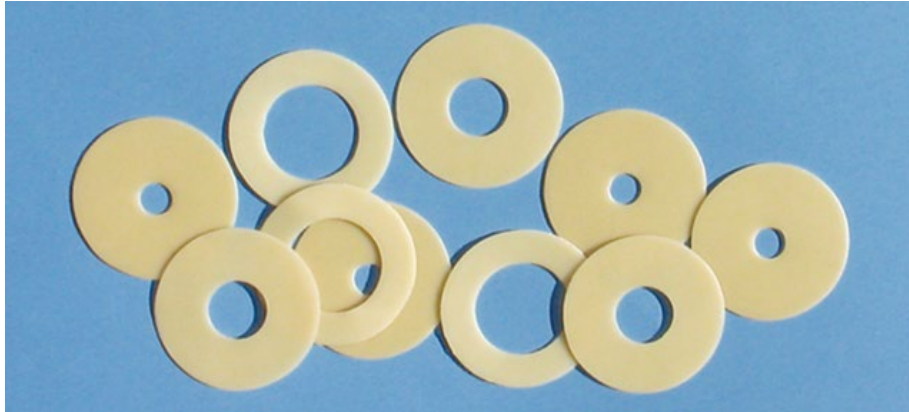
## TWO-PIECE POUCH OPTIONS

6" closed end pouch	35645	Box of 10	HCPCS A4419	(*details on page 13)
9" drainable pouch	41345	Box of 10	HCPCS A5063	(*details on page 12)
9" drainable pouch	41445	Box of 10	HCPCS A5063	(*details on page 12)
8" closed end pouch	55645	Box of 15	HCPCS A4419	(*details on page 13)

## THE CYMED HYDROCOLLOID WASHER

Box of 30  
HCPCS A4404

Washers provide extra protection and support to the skin surrounding the stoma without sacrificing comfort. Naturally extracted from citrus peels, Cymed's washers are a specially formulated pectin-based hydrocolloid. Washers can provide some absorption and longer wear time for wounds, as well as providing some minor convexity for recessed stomas.



Stoma Size	Thin washer	Thick washer
<b>Cut-to-fit</b> up to 1½" (38mm)	89410	78910
<b>Pre-cut</b> for 7⁄8" (22mm)	89422	78922
<b>Pre-cut</b> for 1" (25mm)	89425	78925
<b>Pre-cut</b> for 1⅛" (29mm)	89429	78929
<b>Pre-cut</b> for 1¼" (32mm)	89432	78932
<b>Pre-cut</b> for 1⅜" (35mm)	89435	78935
<b>Large size:</b> <b>Cut-to-fit</b> for Stomas up to 2½" (64mm)	99410	98910

## THE CYMED SEAL

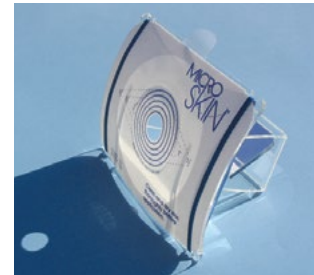
HCPCS A4385



Moldable, stretchable washer fits any stoma. Fills irregularities, and provides a waterproof seal and skin protection.

CS 1000 10 seals per package  
CS 2000 20 seals per package  
CS 3000 30 seals per package

## MICROSKIN® APPLICATOR



Optional for use applying MicroSkin® Adhesive Barrier. The mirror reflects the stoma and allows you to line up the stoma in the mirror to place the pouch accurately.

89180

## 3M CAVILON™



Cavilon™, made by 3M, is an alcohol-free wipe that dries quickly to form a breathable coating on the skin. Cavilon™ will help protect the skin and may also aid the MicroSkin® to adhere to your body and achieve greater wear times.

3M-3344B

Box of 25 individual wipes

HCPCS A5120

3M-3346

28 mL Bottle

HCPCS A4369

## SKIN TAC™



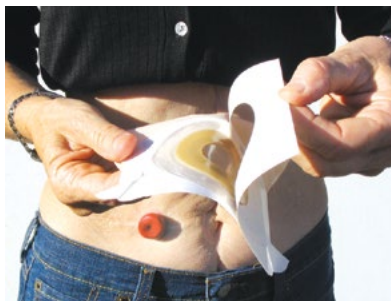
Clear, wipe-on skin adhesive  
Non-latex, hypoallergenic

87900

50 wipes per package

Caution: Skin Tac™ contains alcohol and inhibits breathability. Discontinue use if skin irritation develops or worsens.

## BASIC STEPS FOR MICROSkin® APPLICATION



MicroSkin® is easy to apply!

The MicroSkin® barrier comes with protective paper on BOTH sides. The side strips allow you to handle the barrier without touching the adhesive. Hold the pouch so that you can look at the writing.

Remove the printed square cover paper from the MicroSkin® barrier.



Holding the vertical side strips, apply the pouch over the stoma.



Remove the strips of paper from the sidebars by pulling the tabs at the top of each strip, and press down the edges of the barrier.



Remove the paper frame from the non-adhesive side of the barrier. Feel the softness and flexibility of MicroSkin®!

### Creating the best bond between your skin and MicroSkin®

In most cases, MicroSkin adheres best on clean, dry skin. Wash with plain water and dry the skin thoroughly. Avoid application in a steamy bathroom or if you are sweating.

### Tips on achieving the best adherence of the MicroSkin to your skin:

- When using soap around your stoma, use one with minimal moisturizers, or one that rinses clean, such as Dove® or Ivory®.
- Skin preps and powders diminish adhesion, and are not recommended for use with any MicroSkin product. Additionally, use of any product between your skin and the MicroSkin can compromise the adherence and breathability of the MicroSkin (see pg. 4 for more information on Breathability).
- Washers create a flexible and secure seal. Ensure washer is the correct size: the washer should touch all the way around stoma, without squeezing, leaving no visible gap.
- Skin irritation or breakdown is a common reason for adherence problems. Moisture from red or broken skin can float the MicroSkin off. Care of skin irritation should be guided by your ostomy nurse or health care professional. You may also consider using 3M Cavilon™ (see pg. 19).

### Putting on a pouch with a barrier with a washer:

The washer that is on many Cymed barriers is a heat-sensitive hydrocolloid. It molds onto the skin and creates a flexible, secure seal. After application, lie still for a few minutes and apply gentle pressure around the stoma while the washer bonds to the skin.

### Possible causes and solutions for leakage are:

- Leaving a small gap between the washer and the stoma does not allow a seal to be formed and can create a “channel” for liquid to leak through. **Solution:** when putting on a pouch, ensure the washer is touching the stoma all around (use a Cut-to-fit size if necessary), and a good seal is more likely.
- If no washer is used, ensure you press the MicroSkin firmly down on the skin when putting it on for best adhesion and to prevent tiny openings for liquid to seep through. If that doesn't work, consider Skin Tac (see page 19). Skin Tac creates a tacky surface for the washer and MicroSkin to cling to.
- If irregular skin contour causes leakage, try the Cymed Seal. It is a moldable, stretchable hydrocolloid ring that conforms to and fills-in any irregular shape in the skin. If the washer erodes or melts too quickly, an initial seal was not created. Try using an additional washer (see page 19).
- If you've tried these steps and you still have leakage, please visit: [www.cymed.us/solutions](http://www.cymed.us/solutions)



## Will Medicare pay for these pouches?

**Yes!** All Cymed pouches receive Medicare reimbursement. Several suppliers take assignment on Cymed products. See the supplier list on our web page.

## Does Cymed have a convex pouch?

No, but our MicroSkin® film skin barrier is flexible and can provide some convexity. See next question.

## Will a MicroSkin® pouch work with a recessed/flush stoma?

Yes, but we recommend plain MicroSkin skin barrier without a hydrocolloid washer/ring be used with flush/recessed stomas. When putting on the pouch, press down firmly on the plain barrier around the stoma area to ensure no tiny air gaps remain that can lead to leakage later. Solid adhesion is crucial. If extra adhesion is needed, use Torbot Skin Tac wipes (p.19). However if skin is irritated, apply two layers of 3M Cavilon wipes (p.19) first.

## Do I need a MicroSkin® barrier with a washer?

It depends if your stoma is protruding continuously. If it is, we recommend you do use Cymed hydrocolloid rings, or "washers" as we call them, and that the inside edge be touching the stoma all the way around it at the start (the hydrocolloid material we use is soft so it won't stress your stoma. If you have a flush or recessed stoma, we recommend you not use hydrocolloid washers (see previous paragraph).

## Should I use stoma paste?

Use Stoma Paste if the peristomal skin is not smooth but uneven or rough, which can result in leaking because the MicroSkin skin barrier and/or hydrocolloid barrier work better if they are put on smooth skin. If you have uneven skin surface and experience leaking problems, apply stoma paste over rough areas to create smoothness and allow to dry for one minute.

## Is MicroSkin® hypoallergenic?

Cymed products are latex-free, which make allergic reactions rare, but they can happen. Many people turn to MicroSkin® because they are allergic to other products. If skin allergy is a concern, we recommend doing a "patch test" by placing our product on the abdomen opposite your stoma to see if you have a reaction.

## What should I do if a rash or wound develops around the stoma?

Your Ostomy Nurse or physician can determine the cause and recommend a plan of treatment. Some rashes are fungal in origin and require medication. Others may be an allergic reaction, or a dermatitis caused by exposure of the skin to urine or stool. You may also consider using 3M Cavilon™ (see page 19).

## Can Cymed's pouch be worn while swimming, or in a hot tub?

Yes! MicroSkin® is completely waterproof! Water lovers of all kinds have been able to return to their previous activities such as bathing, swimming and even scuba diving. Not even a hot-tub is too much for MicroSkin®, which is why we've been called "the hot-tub pouch" by ostomates.

## Can Cymed's pouch be worn for more strenuous activity like sports or gardening?

Yes! A MicroSkin® pouch was worn through a grueling world-class Ironman Triathlon by John Dermengian (see page 5). If the MicroSkin® held up to a triathlon, it should be able to hold up to any activity you want to pursue.

## Should I use stoma paste?

Stoma paste is usually unnecessary because Cymed's barriers are so flexible. If stoma paste is needed, it should be used only with the barriers that have washers, not with the Plain MicroSkin® barrier.

## What if you are used to wearing a belt?

You may feel insecure during your first few days of wearing MicroSkin if you are accustomed to wearing a belt. The MicroSkin fits tightly and holds securely without a belt.

## What about intimacy?

The MicroSkin® barrier is the softest, most skin-like barrier on the market. It provides the ultimate in comfort, both for the wearer and the partner. Smaller mid-size and mini pouches are available depending on your type of ostomy.

## I need one hand to hold my abdomen while I apply the pouch with the other. How can I do this with MicroSkin?

Our MicroSkin applicator (see page 19) is designed for one-handed application. The stoma can be visualized through a mirror in the applicator and the convex-shape allows for smooth application of the MicroSkin.