



Hip-High Chair  
Steel Construction

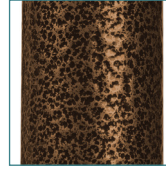


FIGURE A

- Designed for post-hip surgery residents
- Attractive, durable brown-vein finish is easy-to-maintain and less institutional looking (Figure A)
- Contoured armrests are comfortable and durable
- Attractive vinyl seat and backrest are soft, washable, comfortable and water resistant

PRODUCTS	Description
17100-BV	Steel Brown-Vein Frame Construction, 1/cs

SPECIFICATIONS	Description
Floor to Seat Height	26"
Width Between Arms	17.5"
Floor to Arm Height	32"
Floor to Footrest Height	6"
Overall Dimensions	22" (W) x 40.75" (H) x 29" (D)
Weight	37 lbs.
Carton Shipping Weight	47 lbs.
Weight Limit	300 lbs.
Warranty	1 Year on Upholstery, Limited Lifetime Warranty on Frame