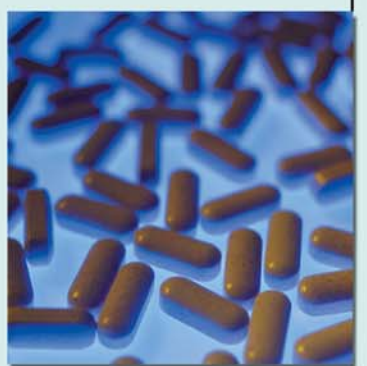


Critical Cover

Facemasks & Shields

Dedicated to the protection of
people, products and environments™

AlphaProTech
INCORPORATED



Critical Cover[®] Facemasks & Shields

Critical Cover[®] Facemasks & Shields

Alpha Pro Tech Facemasks & Shields

Alpha Pro Tech designs and manufactures a wide range of protective Facemasks and Face Shields for the laboratory, cleanroom and light industrial markets. With a variety of protective products and configurations, we have just the right one for your specific environment and/or application.

Many of our Facemasks incorporate Alpha Pro Tech's patented and integrated Magic Arch[®] and PFL[®] (Positive Facial Lock) feature that enhance user comfort and product performance.

PFL[®] Masks

Breathe Easier and Safer

Features & Benefits: The innovative and patented Positive Facial Lock[®] (PFL[®]) feature utilizes our exclusive Twist-Seal[®] technology that allows the user to create a custom fit each and everytime. This unique feature significantly reduces the possibility of the user inhaling airborne contaminants and creates a positive seal to a variety of facial sizes and features. Additionally, the integrated Magic Arch[®] prevents the mask from coming in contact with the user's nose and mouth thereby making it easier to breathe while enhancing filtration efficiency. The hypoallergenic materials used in the PFL masks create a durable exterior and a soft, comfortable interior.

Table 1 - Medical Facemask Material Requirements by Performance Class Per ASTM F2100	
Characteristic	
Bacterial Filtration Efficiency, %	≥ 95
Differential Pressure, mm H ₂ O/cm ²	<4.0
Sub-micron Particulate Filtration Efficiency at 0.1 micron, %	Not Required
Resistance to Penetration by synthetic blood, minimum pressure in mm Hg for pass result	80
Flame spread	Class 1
Helmke Drum	Category 2



608 PD

PFL[®] Headband Masks

608 Blue
608 BS Blue Stripe
608 PD Purple Designer

300/case (6 boxes of 50)

9608 White

Cleanroom Packaging
300/case (6 bags of 50)



615 BS

PFL[®] Ear Loop Masks

615 Blue
615 BS Blue Stripe
615 PD Purple Designer
615 PK Pink Stripe

300/case (6 boxes of 50)



108

PFL[®] Headband Masks No Magic Arch[®]

108 Blue

300/case (6 boxes of 50)

9908 Blue

Cleanroom Packaging
300/case (6 bags of 50)



115

PFL[®] Ear Loop Masks No Magic Arch[®]

115 Blue

300/case (6 boxes of 50)

Critical Cover[®] Facemasks & Shields

PFL[®] Laser Masks

PFL[®] Technology and Laser Plume Protection

Features & Benefits: The PFL[®] Laser mask effectively filters plumes during laser surgery. The mask utilizes Positive Facial Lock[®] technology with an integrated Twist-Seal[®] chinpiece in the facemask to give everyone in the operating room a custom fit each time. The PFL[®] design helps eliminate the potential of inhaling airborne contaminants while maintaining a comfortable

seal to the user's face. The patented and integrated Magic Arch[®] technology prevents the mask from coming in contact with the user's nose and mouth thereby making it easier to breathe while enhancing filtration efficiency. These durable masks are made of hypoallergenic materials and have a smooth, soft interior for ultimate comfort.



638

PFL[®] Laser Masks

638 Gray Stripe,
Single Headband

210/case (6 boxes of 35)

Table 1 - Medical Facemask Material Requirements by Performance Class Per ASTM F2100	
Characteristic	
Bacterial Filtration Efficiency, %	≥ 98
Differential Pressure, mm H ₂ O/cm ²	<5.0
Sub-micron Particulate Filtration Efficiency at 0.1 micron, %	≥ 98
Resistance to Penetration by synthetic blood, minimum pressure in mm Hg for pass result	120
Flame spread	Class 1
Helmke Drum	Category 2

PFL[®] N-95 Particulate Respirator

NIOSH Approved Respirator

Features & Benefits: The Positive Facial Lock[®] (PFL[®]) N-95 Particulate Respirator meets the World Health Organization (WHO) and the Centers for Disease Control (CDC) recommended protection levels (where applicable) for many airborne contaminants. NIOSH Certified, our N-95 delivers the appropriate amount of filtration efficiency and when combined with a trio of patented and unique design features,

also delivers the user a comfortable, custom fitting facemask. The integrated Magic Arch[®] technology creates a breathing chamber within the facemask by holding it away from the user's nose and mouth. Our PFL technology, incorporating an integrated Twist Seal[®] chinpiece, helps the wearer create a perfect fit every time.



695

PFL[®] N95 Particulate Respirator

695 Teal Stripe

210/case (6 boxes of 35)

Table 1 - Medical Facemask Material Requirements by Performance Class Per ASTM F2100	
Characteristic	
Bacterial Filtration Efficiency, %	≥ 95
Differential Pressure, mm H ₂ O/cm ²	<4.0
Sub-micron Particulate Filtration Efficiency at 0.1 micron, %	Not Required
Resistance to Penetration by synthetic blood, minimum pressure in mm Hg for pass result	80
Flame spread	Class 1
Helmke Drum	Category 2

Critical Cover[®] Facemasks & Shields

CoolOne™ Facemasks

Cool Design, Very Cool Comfort

Features & Benefits: Thanks to the patented Magic Arch[®] support, CoolOne facemasks give users cooler, more comfortable performance than other designs currently on the market. The integrated Magic Arch[®] support strip holds the mask away from the nose and mouth to create a larger breathing chamber to enhance user comfort. Choose from tie strings, ear loops or ear loops with an anti-fog application - for use in high humidity environments or with protective eyewear.



BL 6001

CoolOne™ Tie Mask

BL 6001 Blue

300/case (6 boxes of 50)

BL 6001 CC

Cleanroom Packaging
300/case (6 bags of 50)



BL 6055

CoolOne™ Ear Loop Masks

BL 6055 Blue
GR 6055 Green
PK 6055 Pink
YL 6055 Yellow

500/case (10 boxes of 50)

CoolOne™ Anti-fog Ear Loop Masks

BL 6155 Blue

500/case (10 boxes of 50)

Table 1 - Medical Facemask Material Requirements by Performance Class Per ASTM F2100

Characteristic	
Bacterial Filtration Efficiency, %	≥ 95
Differential Pressure, mm H ₂ O/cm ²	<4.0
Sub-micron Particulate Filtration Efficiency at 0.1 micron, %	Not Required
Resistance to Penetration by synthetic blood, minimum pressure in mm Hg for pass result	80
Flame spread	Class 1
Helmke Drum	Category 1

CoolOne™ Facemasks

For Sensitive Skin

Features & Benefits: If you have skin sensitivity, choose the CoolOne Sensitive Skin facemask. These facemasks are hypoallergenic and free of pigments and dyes. The patented Magic Arch[®] support strip holds the mask away from the nose and mouth to create a larger breathing chamber to enhance user comfort. For a secure and comfortable fit, soft knit ear loops are available along with an anti-fog version for use in high humidity environments or with protective eyewear.



WH 6155

CoolOne™ Sensitive Skin Ear Loop Mask

WH 1155 White

500/case (10 boxes of 50)

CoolOne™ Sensitive Skin Anti-Fog Ear Loop Mask

WH 6155 White

500/case (10 boxes of 50)

Table 1 - Medical Facemask Material Requirements by Performance Class Per ASTM F2100

Characteristic	
Bacterial Filtration Efficiency, %	≥ 95
Differential Pressure, mm H ₂ O/cm ²	<4.0
Sub-micron Particulate Filtration Efficiency at 0.1 micron, %	Not Required
Resistance to Penetration by synthetic blood, minimum pressure in mm Hg for pass result	80
Flame spread	Class 1
Helmke Drum	Category 1

Critical Cover[®] Facemasks & Shields

ShieldMate[®] Facemask w/Eye Shield

Dual Protective Performance

Features & Benefits: Get both eye and face splash protection along with particulate filtration efficiency in this truly unique design. The ShieldMate[®], a combination facemask and eye shield, features a low glare, anti-fog coated, optically clear shield that is ultrasonically welded to the facemask. Additionally, an anti-fog foam strip on the top of the facemask significantly reduces the potential for eyewearfogging. The patented Magic

Arch[®] support strip holds the mask away from the nose and mouth creating a larger breathing chamber to enhance user comfort. This results in a cooler, more comfortable performance for the wearer. Comfortable tie strings and a full-length aluminum nose-piece properly secure the ShieldMate facemask to the user.



BL 8101S

ShieldMate[®] Mask w/Eye Shield

BL 8101S Blue

100/case (4 boxes of 25)

Table 1 - Medical Facemask Material Requirements by Performance Class Per ASTM F2100

Characteristic	
Bacterial Filtration Efficiency, %	≥ 95
Differential Pressure, mm H ₂ O/cm ²	<4.0
Sub-micron Particulate Filtration Efficiency at 0.1 micron, %	Not Required
Resistance to Penetration by synthetic blood, minimum pressure in mm Hg for pass result	80
Flame spread	Class 1
Helmke Drum	Category 2

Combo[®] Facemask w/Shield

Optically Clear, Removable Shield

Features & Benefits: The Combo[®] facemask and face shield is hypoallergenic with an optically clear shield. The face shield is attached to the mask with snaps so that it can be easily removed where applicable. The faceshield is 7 millimeters thick with an anti-fog coating, low glare and is distortion free.



5194-E

ShieldMate[®] Mask w/Shield

5194-E Blue

100/case (4 boxes of 25)

Table 1 - Medical Facemask Material Requirements by Performance Class Per ASTM F2100

Characteristic	
Bacterial Filtration Efficiency, %	≥ 98
Differential Pressure, mm H ₂ O/cm ²	<5.0
Sub-micron Particulate Filtration Efficiency at 0.1 micron, %	≥ 98
Resistance to Penetration by synthetic blood, minimum pressure in mm Hg for pass result	160
Flame spread	Class 1
Helmke Drum	Category 1

Critical Cover[®] Facemasks & Shields

AlphaAir[®] Facemasks

Particle Filtration to 0.1 Micron

Features & Benefits: The high value AlphaAir[®] facemasks are clean, comfortable and provide outstanding particle filtration down to 0.1 micron. The full-length aluminum nosepiece helps provide a perfect fit every time. The sonic welded design ensures maximum protection for the user. The AlphaAir[®] is available with either ear loops or tie strings.



YL 5005

AlphaAir[®] Ear Loop Masks

BL 5005	Blue
GR 5005	Green
PK 5005	Pink
YL 5005	Yellow

500/case (10 boxes of 50)



BL 5100

AlphaAir[®] Tie Mask

BL 5100 Blue

300/case (6 boxes of 50)

Table 1 - Medical Facemask Material Requirements by Performance Class Per ASTM F2100	
Characteristic	
Bacterial Filtration Efficiency, %	≥ 98
Differential Pressure, mm H ₂ O/cm ²	<5.0
Sub-micron Particulate Filtration Efficiency at 0.1 micron, %	≥ 98
Resistance to Penetration by synthetic blood, minimum pressure in mm Hg for pass result	160
Flame spread	Class 1
Helmke Drum - Ear Loops	Category 1
Helmke Drum - Ties	Category 2

Microbreathe[™] Facemask

Designed for Cleanroom Use

Features & Benefits: The interior of this 3-ply facemask is made of a soft, lightweight thermal bond material that provides the user with a comfortable fit. The hypoallergenic design provides high filtration efficiency while remaining a very breathable facemask. The facemask uses soft, non-latex elastic ear loops that are ultrasonically welded on the sides.



9010

Microbreathe[™] Ear Loop Mask

9010 White

Cleanroom Packaging
500/case (10 bags of 50)

Table 1 - Medical Facemask Material Requirements by Performance Class Per ASTM F2100	
Characteristic	
Bacterial Filtration Efficiency, %	≥ 98
Differential Pressure, mm H ₂ O/cm ²	<5.0
Sub-micron Particulate Filtration Efficiency at 0.1 micron, %	≥ 98
Resistance to Penetration by synthetic blood, minimum pressure in mm Hg for pass result	120
Flame spread	Class 1
Helmke Drum	Category 1

Critical Cover® Facemasks & Shields

AlphaGuard® Facemask

Suitable for Use in Controlled Environments

Features & Benefits: For superior comfort and protection, the hypoallergenic AlphaGuard facemask exhibits an excellent water vapor transmission rate and particle filtration down to 0.1 micron. This 3-ply facemask has soft, latex-free, non-irritating knit ear loops that are ultrasonically welded to the mask.



9050

AlphaGuard® Ear Loop Mask

9050 Blue

Cleanroom Packaging
500/case (10 bags of 50)

Table 1 - Medical Facemask Material Requirements by Performance Class Per ASTM F2100	
Characteristic	
Bacterial Filtration Efficiency, %	≥ 98
Differential Pressure, mm H ₂ O/cm ²	<5.0
Sub-micron Particulate Filtration Efficiency at 0.1 micron, %	≥ 98
Resistance to Penetration by synthetic blood, minimum pressure in mm Hg for pass result	160
Flame spread	Class 1
Helmke Drum	Category 1

MVT Facemasks

Highly Breathable

Features & Benefits: This hypoallergenic MVT highly breathable facemask is comfortable to wear while providing limited filtration efficiency. The soft inner facing provides for all-day comfort and the ultrasonic weld design yields a complete facial seal every time. Available with comfortable, soft, latex-free knit ear loops or polyethylene tie strings.



9040

MVT Ear Loop Mask

9040 White

Cleanroom Packaging
500/case (10 bags of 50)



9240

MVT Tie Mask

9240 White

Cleanroom Packaging
500/case (10 bags of 50)

	Test Performed	Result (Average)
Performance	Differential Pressure per MIL-M36954C	0.1 mm H ₂ O/cm ²
	Latex Particle Challenge (Filtration Efficiency) @ 0.1 micron per ASTM F2299	41.6%
	Bacterial Filtration Efficiency	16.0%
	Helmke Drum - Ear Loops	Category 1
	Helmke Drum - Ties	Category 2

Critical Cover[®] Facemasks & Shields

Comfort[™] Veil

Designed Especially for Users with Sensitive Skin

Features & Benefits: To help wearers with sensitive skin, the Comfort[™] Veil is made from a soft, nonwoven, hypo-allergenic material. The veil is (15") long to provide freedom of movement and better protection while employing a latex-free, elastic Comfort headband. An integrated malleable nosestrip is ultrasonically welded into the fabric to provide a good seal every time.



9400

Comfort[™] Veil

9400 Comfort[™] Band

150/case

Performance	Test Performed	Result (Average)
	Differential Pressure per MIL-M36954C	0.1 mm H ₂ O/cm ²
Latex Particle Challenge (Filtration Efficiency) @ 0.1 micron per ASTM F2299	54%	

Coverall[®] Face Shields

Splash Protection

Features and Benefits: When you need total facial splash protection, choose the Coverall[®] face shield. The face shield's wrap-around design provides the wearer with great peripheral vision while acting as a protective shield against non-hazardous liquid splash and light particles in a Lab or Controlled Environment. The Coverall face shield is not ANSI Z87 rated for eye protection. You can wear the lightweight shield comfortably for long periods and it fits easily over prescription glasses or protective eyewear. A double-sided anti-fog coating reduces

the possibility of fogging in high humidity environments. For safe working conditions, the face shield is low distorting and 100% optically clear while a soft polyurethane foam headband securely positions the device on the wearer.

Available in two styles: Full face shield and half face shield. Also available with an adjustable Velcro[®] band or with our latex free elastic Comfort headband. Individually packaged.



2807

Coverall[®] Full Face Shields

- 2802 Full Face Shield w/Velcro[®] Adjustable Band
 - 2807 Full Face Shield w/Comfort Band
- 100/case (4 boxes of 25)



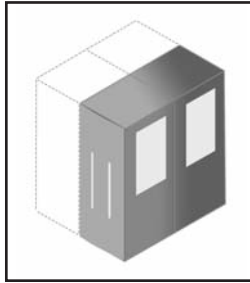
2808

Coverall[®] Half Face Shields

- 2803 Half Face Shield w/Velcro[®] Adjustable Band
 - 2808 Half Face Shield w/Comfort Band
- 100/case (4 boxes of 25)

Facemask Packaging

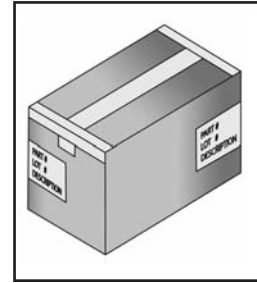
Dispenser Box Packaging



Dispenser Boxes



Dispenser boxes in carton



Carton taped sealed

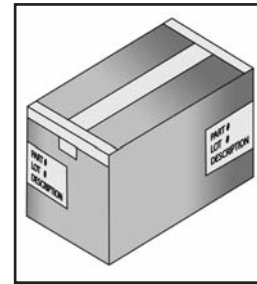
Cleanroom Packaging



Masks in heat-sealed bag



Mask bags in carton
liner within carton



Carton taped sealed

Critical Cover[®] Facemasks & Shields

WARNING: These garments and associated materials are not suitable for use in some environments containing certain chemicals and/or hazardous agents. It is the responsibility of the user to determine the level of risk in a particular environment and the proper personal protection equipment needed. Garments manufactured from synthetic non-woven material may generate static electricity. Garments that contain an anti-stat treatment aren't intended to be used as a safety feature. These garments are not recommended to be used in a flammable and/or explosive environment. If you have any questions, contact your distributor or Alpha Pro Tech for garment/fabric safety data. The use of this product is out of Alpha Pro Tech's control. Therefore, Alpha Pro Tech makes no warranties, expressed or implied, and assumes no liability as to the performance of these products for a particular use. **CAUTION: AVOID HEAT AND/OR OPEN FLAME.**

UCC Limited Warranty and Exclusions

Limited Warranty; Disclaimer and Limitation of Remedies: The products shall be free from defects in material and workmanship. ALPHA PRO TECH HEREBY EXPRESSLY DISCLAIMS ALL WARRANTIES, EITHER EXPRESSED OR IMPLIED, INCLUDING ANY IMPLIED WARRANTY OF MERCHANTABILITY OR FITNESS FOR A PARTICULAR PURPOSE. Buyer's remedy is expressly limited to replacement of any defective product and Alpha Pro Tech shall have no responsibility for any incidental or consequential damages. Any claims under this warranty must be made in writing to Alpha Pro Tech and must be made within 90 days of the purchase.

Alpha Pro Tech, Inc. reserves the right to change any prices, terms and conditions of sale at any time without any notice.

AlphaAir, AlphaGuard, Comfort, CoolOne, Coverall, Critical Cover, Magic Arch, Microbreathe, PFL, Positive Facial Lock, ShieldMate and Twist-Seal are trademarks of Alpha Pro Tech, Inc.

Velcro is a registered trademark of Velcro Industries B.V.



**Alpha Pro Tech is committed to protecting people,
products, manufacturing and healthcare environments to
optimize process effectiveness and customer profitability.**

Ordering Information: To place an order, receive a sample or obtain more information,
please contact our Customer Service Department toll-free from
9:00 a.m. to 5:00 p.m. Eastern Time at:

Phone: 800-749-1363

Fax: 905-479-8703

E-mail: sales@alphaprotech.com

International customers please use the following contact information:

Phone: 520-281-0127 Ext. 201

Fax: 520-281-0235

E-mail: ccrespo@alphaprotech.com

Visit us at: www.alphaprotech.com

Critical Cover[®]

AlphaProTech
INCORPORATED