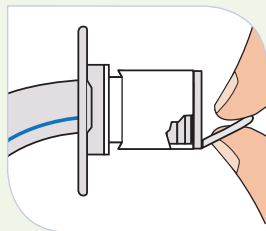


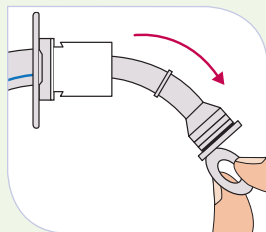
Portex® Blue Line Ultra® Tracheostomy Tube

Inner Cannula Replacement

Removal

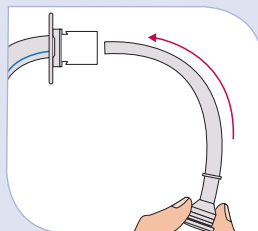


Disconnect equipment from 15 mm connector if present. Grasp the "ring pull."

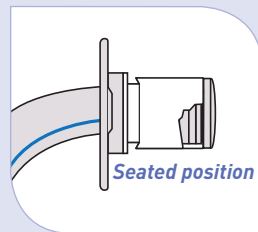


Remove the inner cannula, pulling in a down and outward motion, as indicated.

Insertion



Remove the correct size inner cannula from the sterile package. Grasp as shown and gently insert into the tracheostomy tube.



Gently seat the inner cannula into the 15 mm connector. A light "snap" will indicate proper position. Reconnect equipment and check for security if necessary.

Blue Line Ultra® Tracheostomy Tube Ordering Chart

Style	Cuffed	Uncuffed	Tube Inner Diameter (mm)	Inner Cannula Diameter (mm)	Tube Outer Diameter (mm)	Length (mm)	Cuff Resting Diameter (mm)	Inner Cannula	Jackson/Shiley Equivalent
Regular Fenestrated Suctionaid® Tube	100/815/060 100/817/060 100/875/060	100/816/060 100/818/060	6.0	5.0	9.2	64.5	20.0	100/856/060 100/858/060	4
Regular Fenestrated Suctionaid® Tube	100/815/070 100/817/070 100/875/070	100/816/070 100/818/070	7.0	6.0	10.5	70.0	24.0	100/856/070 100/858/070	None
Regular Suctionaid® Tube	100/815/075 100/875/075	100/816/075	7.5	6.5	11.3	73.0	30.0	100/856/075 100/858/075	None
Regular Fenestrated Suctionaid® Tube	100/815/080 100/817/080 100/875/080	100/816/080 100/818/080	8.0	7.0	11.9	75.5	30.0	100/856/080 100/858/080	6
Regular Suctionaid® Tube	100/815/085 100/875/085	100/816/085	8.5	7.5	12.6	78.0	30.0	100/856/085 100/858/085	None
Regular Fenestrated Suctionaid® Tube	100/815/090 100/817/090 100/875/090	100/816/090 100/818/090	9.0	8.0	13.3	81.0	30.0	100/856/090 100/858/090	8
Regular Fenestrated Suctionaid® Tube	100/815/100 100/817/100 100/875/100	100/816/100 100/818/100	10.0	9.0	14.0	87.5	30.0	100/856/100 100/858/100	10

Smiths Medical ASD, Inc.

Norwell, MA 02061, USA
Phone: 1-214-618-0218
Toll-Free USA: 1-800-258-5361
www.smiths-medical.com

Smiths Medical Canada Ltd.

Markham, Ontario, Canada, L3R 4Y8
Phone: 905-477-2000
Toll-Free: 1-800-387-4346

Customer and Clinical Services

U.S. 1-800-258-5361
Canada 1-800-387-4346
www.smiths-medical.com

Smiths Medical is part of the global technology business Smiths Group plc.

Product[s] described may not be licensed or available for sale in Canada or other countries outside of the United States.

Blue Line Ultra and the Portex and Smiths Medical design marks are trademarks of Smiths Medical. The symbol ® indicates the trademark is registered in the U.S. Patent and Trademark Office and certain other countries. ©2011 Smiths Medical. All rights reserved. 4/11 TR194433EN

smiths medical