

PROTECTS ^{THE} WOUND MINIMISES PAIN AND MACERATION

WHAT IS IT?

ADAPTIC® Non-Adhering Dressing is a primary dressing made of knitted cellulose acetate mesh, impregnated with a specially formulated petrolatum emulsion.

EASY TO REMOVE MINIMISING PAIN

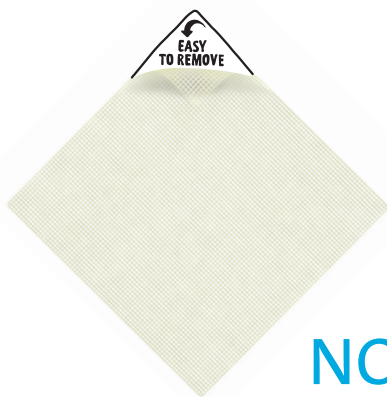
The unique cellulose acetate mesh of ADAPTIC® protects regenerating tissue by minimising wound trauma at dressing change¹.



REDUCES THE RISK OF MACERATION AND ADHERENCE

The pore size of ADAPTIC®:

- Allows easy passage of exudate to the secondary absorbent dressing, thus minimising the risk of pooling and maceration at the wound site.
- Reduces the risk of tissue adherence to both the ADAPTIC® Non-Adhering dressing and the secondary dressing¹.



ADAPTIC® NON-ADHERING DRESSING



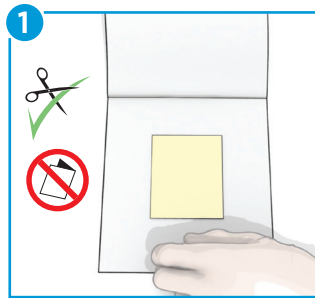
USER GUIDE

BEFORE APPLICATION

Refer to the instructions for use.

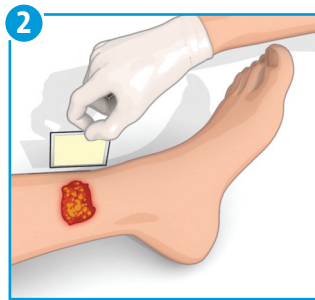
Select a size of ADAPTIC® that is larger than the wound. Prepare the wound according to wound management protocol. Ensure skin surrounding the wound is dry. Remove the ADAPTIC® dressing from the box.

Dressing preparation



If needed **ADAPTIC®** may be cut to size with sterile scissors.

Dressing application



1. Place **ADAPTIC®** dressing directly over the wound using surgical tongs or forceps and smooth in place around the wound.
2. If more than one piece of **ADAPTIC®** is required, ensure dressings overlap, to avoid secondary dressing adherence to the wound. Overlap should be minimised to prevent occlusion of holes.

Secondary dressing application



Cover **ADAPTIC®** with a secondary dressing such as **TIELLE®**. Choose the secondary dressing based on the level of exudate.

Apply any secondary cover or retention/compression bandage.

Dressing change and removal



Dressing change frequency is dictated by good wound care practice and will depend on the condition of the wound. **ADAPTIC®** may be left in place for several days depending upon amount of exudate.

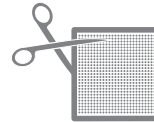
WHEN TO USE

ADAPTIC® Non-Adhering Dressing is indicated for dry to highly exuding wounds including:

- 1st and 2nd degree burns
- Lacerations and abrasions
- Grafts
- Venous ulcers
- Pressure ulcers
- Nail extractions
- Eczema
- Staples and suture lines
- Surgical incisions and reconstructive procedures



Can be used with compression therapy².



ADAPTIC® Non-Adhering Dressing can be cut to suit the size of the wound without unravelling and shredding.

Good to know...

ADAPTIC® is easier to remove than both Mepitel and Jelonet, allowing pain-free removal in 75% of the patients (vs 56% for Mepitel and 51% for Jelonet)¹

ADAPTIC®		
Size	Dressings per box	Systagenix code
7.6cm x 7.6cm	50	2012
7.6cm x 20.3cm	3x36	2013
7.6cm x 40.6cm	36	2014
7.6cm x 20.3cm	24	2015
7.6cm x 152.4cm	1	2018
12.7cm x 22.9cm	12	2019



To learn more about the benefits of ADAPTIC® contact your Systagenix representative at +44 (0) 20 302 787 16 or visit www.systagenix.com

References

1. Terrill, P.J., and Varughese, G. A comparison of three primary non-adherent dressings applied to hand surgery wounds. *J Wound Care*. 2000; 9:359-363.
2. Vin, F. et al. The healing properties of Promogran in venous leg ulcers. *J Wound Care* 2002; 11(9):335-41.

© Systagenix wound management 2014. Brands marked with ® or ™ are trademarks of Systagenix. All other products referenced herein are acknowledged to be trademarks of their respective owners.