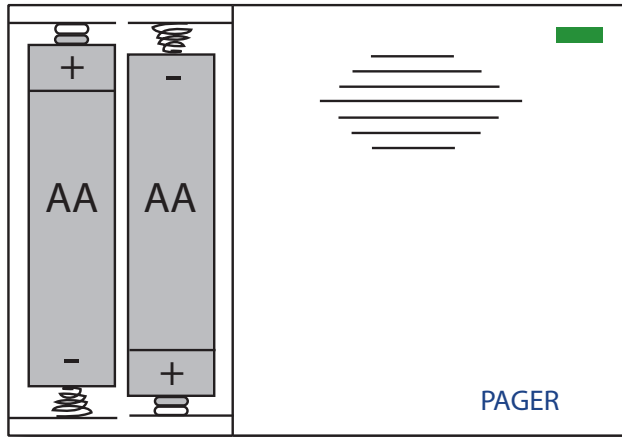


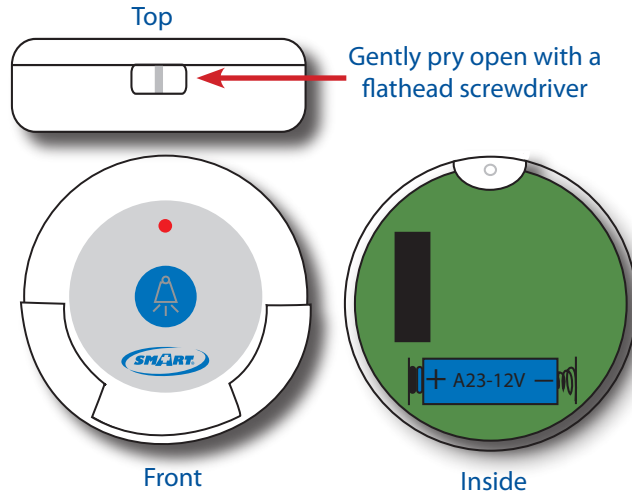
Quick Start Instructions

1 Insert 2 "AA" Batteries into Pager



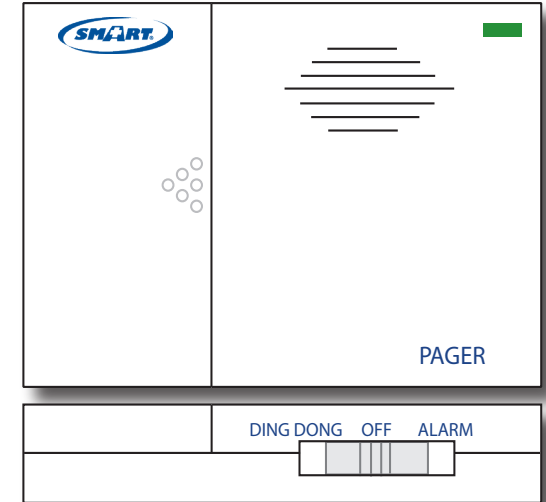
Note: Batteries Included.

2 Insert Batteries into Nurse Call Buttons



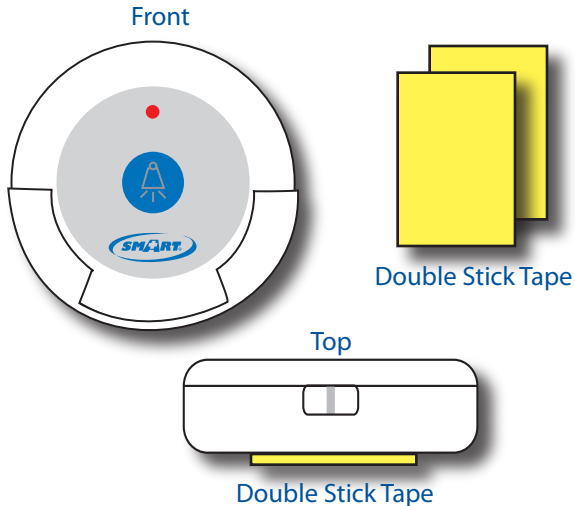
Note: Batteries Included.

3 Select Pager Tone



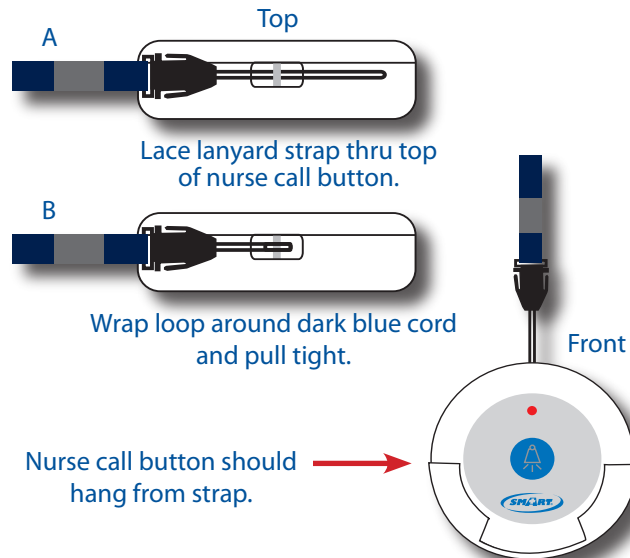
Slide switch on bottom of pager to desired tone.

4 Mount Call Buttons w/Double Stick Tape



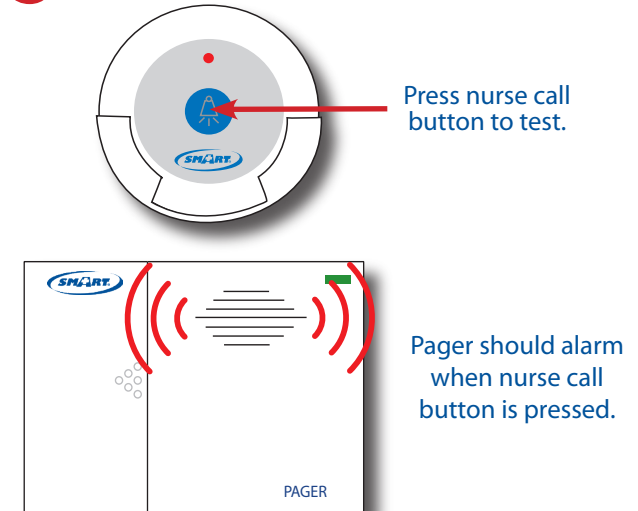
Place double stick tape on back of nurse call button and mount to headboard or wall.

5 Lace Lanyard Strap thru Nurse Call Button (Optional)



Nurse call button should hang from strap.

6 Test System



Note: End user is responsible for testing system at it's furthest range of use.



TL-5102TP Two Call Button Caregiver Paging System

Installation Instructions

Pendants and pagers rely on wireless technology which is subject to physical and environmental considerations. These products do not have an out of range function and as such should be tested periodically in the setting in which they are to be used to understand their area of effective operation. Wireless systems are intended as an adjunct to good caregiving practices and are not a substitute for proper staffing and patient management practices. We recommend that all personnel receive periodic training in the operation of these systems and that the systems are tested before each use.

Warning: Failure to comply with warning may result in injury or death. This device is not suitable for all individuals. Other devices may be required. This device is not a substitute for visual monitoring by caregiver. The manufacturer does not claim that this device will stop elopement and or stop falls. This device is to help augment caregiver comprehensive resident mobility management program. **Test this device before each use. Read the instructions and Legal Disclaimer.**

Seller warrants that the goods sold will be free from defects of workmanship and manufacturing, for a period of one year from the date of sale. Other than this limited warranty, seller makes no express or implied warranties. Except for this limited warranty, NO EXPRESS OR IMPLIED WARRANTIES ARE GIVEN AND NO AFFIRMATION OF SELLER, BY WORDS OR ACTION, WILL CONSTITUTE A WARRANTY. THE GOODS BEING PURCHASED ARE BEING SOLD ON A "WITH ALL FAULTS" BASIS. THE ENTIRE RISK AS TO THE QUALITY AND PERFORMANCE OF THE GOODS IS WITH THE BUYER. SHOULD THE GOODS PROVE DEFECTIVE FOLLOWING THEIR PURCHASE, THE BUYER, AND NOT THE MANUFACTURER, DISTRIBUTOR OR RETAILER, ASSUMES THE ENTIRE COST OF ALL NECESSARY INSTALLATION, SERVICING OR REPAIRS.

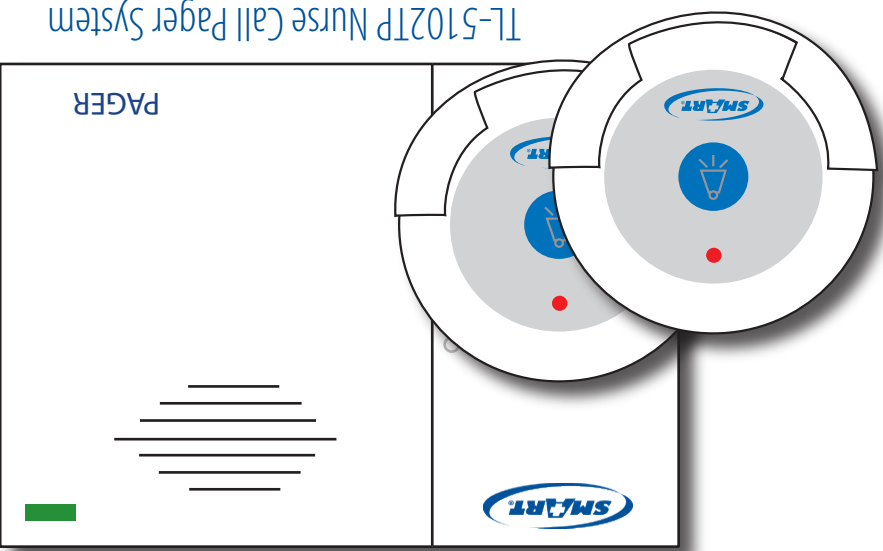
The Smart Caregiver Corporation Nurse Call Paging System is designed to be installed by the end-user. As such, it is the entire responsibility of the buyer to insure that the system is properly installed and tested. Further, the system is not designed to replace good care giving practices including, but not limited to:
a.) Direct patient supervision b.) Adequate training for staff personnel for elopement c.) Testing of the system before each use. WHERE PERMISSIBLE, IT IS THE SELLER'S INTENT TO LIMIT ANY LIABILITY FOR SPECIAL, CONSEQUENTIAL OR INCIDENTAL ECONOMIC DAMAGES TO REFUND OF THE PURCHASE PRICE OR REPLACEMENT OF THE GOODS. SELLER DISCLAIMS ANY LIABILITY FOR COMPENSATORY OR OTHER DAMAGES ARISING OUT OF THE USE OF THE GOODS.

WARNING: The manufacturer does not claim that this device will stop elopement and or stop falls. This device is to help augment caregivers comprehensive resident mobility management program. This product is to be used by a licensed caregiver only.

Smart Caregiver Corporation
sales@smartcaregivercorp.com
Toll Free: 800-650-3637



TL-5102TP System Contents



TL-5102TP Nurse Call Pager System

TL-5102TP Two Call Button Caregiver Paging System:
This simple, streamlined system comes complete with two Nurse Call Buttons and one Caregiver Pager. Caregiver Pager has an audible alarm and is small enough to be carried in the pocket or clipped to a belt. This Two-Pendant Paging System alerts caregiver of resident's needs when resident presses one of the Nurse Call Buttons, as long as they are within 300 feet of each other. The Buttons may be mounted on the headboard of a bed or worn as a pendant by the resident. The Caregiver Paging System can also be configured for use with Chair Pressure Pad Fall Alarms, Bed Pressure Pad Fall Alarms, Seat Belt Fall Alarms, or Floor Mat Fall Alarms. This system comes with a 90 Day Warranty.

TL-5102TP Contents:

- 1 Caregiver Pager (batteries included)
- 2 Nurse Call Buttons (batteries included)
- 2 Lanyard Straps
- 4 Screws
- 2 Double Stick Tape
- 90 Day Warranty

Need Set-up Help? (800) 650-3637

